

# U. S. PUBLIC LAND SURVEY MONUMENT RECORD

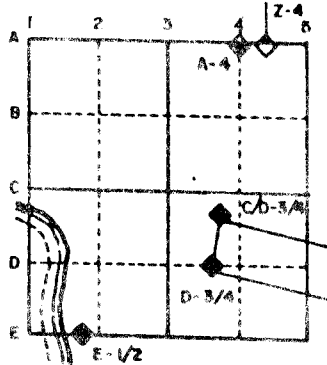
For Public Land Survey Corners in the  
T. 2 N., R. 11 E.

## CORNER CODE INDEX

	1	2	3	4	5	6	7	8	9	10	11	12	13	14	15	16	17	18	19	20	21	22	23	24	25
A																									
B																									
C	6																								
D		5																							
E			4																						
F				3																					
G					2																				
H																									
I																									
J	7																								
K		8																							
L			9																						
M				10																					
N					11																				
O						12																			
P							13																		
Q								14																	
R									15																
S										16															
T											17														
U												18													
V													19												
W														20											
X															21										
Y																22									
Z																	23								
																		24							
																			25						
																				26					
																					27				
																						28			
																							29		
																								30	
																									31
																									32
																									33
																									34
																									35
																									36

PLACE MONUMENT SYMBOL (◆) AT PROPER LOCATION ON ABOVE INDEX

### EXAMPLE



PLYMOUTH TWP  
ROCK COUNTY WI

### IF AVAILABLE STATE PLANE COORDINATES

North (Y) \_\_\_\_\_ Eleve. (Z) \_\_\_\_\_  
East (X) \_\_\_\_\_ Zone \_\_\_\_\_  
Hor. Datum \_\_\_\_\_ Vert. Datum \_\_\_\_\_

(a.)

◆ CORNER MONUMENT

○ WITNESS MONUMENT

BEARINGS ARE BASED ON:

FIELD BOOK \_\_\_\_\_ PAGE # \_\_\_\_\_

SHOW A PLAN VIEW DRAWING DEPICTING THE CORNER MONUMENT AND SURROUNDING PHYSICAL FEATURES, INCLUDING THE EXCAVATION AREA AND DEPTH. THE CORNER MONUMENT SHALL HAVE THE FOLLOWING CHARACTERISTICS: 1) HAVE AT LEAST TWO PREDETERMINED BREAK-OFF POINTS. 2) IF BROKEN, LEAVE A PERMANENTLY MAGNETIZED REMNANT AT THE ORIGINAL POINT. 3) MUST BE EXTENDABLE. 4) THE CAP IS INSCRIBED: ROCK COUNTY SURVEY MONUMENT - PENALTY FOR DISTURBING MARKER. 5) OR AN EXISTING CUT LIMESTONE. AN IRON PIPE 1 1/2" x 4'0" (MINIMUM) MAY BE USED IN AREAS WHERE GROUND WATER IS WITHIN ONE FOOT OF THE SURFACE. IF THE CORNER IS OCCUPIED BY AN IMPROVEMENT (MANHOLE, BURIED CABLE, ETC.) ANY DURABLE, DISTINCT MONUMENT MAY BE USED. CORNERS SHALL BE REFERENCED WITH AT LEAST 4 DURABLE WITNESS MONUMENTS. WITNESS MONUMENTS SHALL BE MADE OF CONCRETE, NATURAL STONE, IRON OR OTHER EQUALLY DURABLE MATERIAL, EXCEPT WOOD. DESCRIBE THE CORNER AND THE WITNESS MONUMENTS.

CORNER CODE:

A 19(2)

10FZ

MICROFILMED

(B) Describe any record evidence, monument evidence, occupational evidence, testimonial evidence or any other material evidence you considered, and whether the monument was found or placed.

- 1868 LOCKE REMONUMENTATION FIELD NOTES. INTERSECTED 1/4 LINE FOR TOWN 3. 11 LKS NORTH OF CORNER. FOUND STONE WITH STATE SET BY ANDREW CODDINGTON IN OLD MOUND. CORNER IN CENTER OF HIGHWAY AND IN LINE OF FENCE RUNNING NORTH. SET 1/4 CORNER .66' WEST OF 1/4 CORNER FOR T3N 1/4 MONUMENT MARKED WITH FIG. 2 ON SOUTH FACE. SHOWS A DISTANCE OF 2656.83 TO THE NW CORNER AND 2656.83 TO THE NE CORNER.
- 1877 RUGER VOL 2 PG 234 SHOWS A STONE MONUMENT AND STATES THAT IT IS SOUTH OF A LINE DRAWN FROM SECTION CORNER TO SECTION CORNER. SHOWS A DISTANCE OF 2654.19 TO THE NW CORNER AND 2652.54 TO THE NE CORNER. USED THE CORNER TO SUBDIVIDE SECTION 2. SHOWS A DISTANCE OF 2625.09 TO THE CENTER OF SECTION 2.
- 1933 SUNNY VOL 3 PG 235 SET 1" X 36" PIPE IN CONCRETE PAVEMENT 8.0 SOUTH OF CENTERLINE. SHOWS A DISTANCE OF 2656.9 TO THE NW CORNER AND 2656.9 TO THE NE CORNER. SHOWS A DISTANCE OF 2625.1 TO THE FENCE INTERSECTION AT THE CENTER OF SECTION 2.
- 1977 BARNES VOL 6 PG 364 FOUND SUNNY'S PIPE AND REPLACED IT WITH AN ALUMINUM MONUMENT.
- 1979 SCHROEDER VOL 5 PG 531 USED THE SOUTH QUARTER CORNER OF SECTION 35 T3N TO SUBDIVIDE SECTION 35. THAT CORNER WAS ESTABLISHED BY USING SUNNY'S PIPE.
- 1988 BARNES A-19 DUG AND FOUND CUT LIMESTONE 26" DEEP 3.0 SOUTH OF CENTER OF PAVEMENT. PLACED MAGNET ON TOP OF STONE. IT APPEARED FROM THE EXCAVATION SITE THAT SUNNY NEVER DUG FOR THE CORNER.

FOUND DOT DISK.

C) Was the corner restored through acceptance of (1) an obliterated evidence location, or, (2) a found perpetuated location?  
ACCEPTED FOUND CUT LIMESTONE.

D) Describe any material discrepancy between the location of the corner as restored or reestablished and the location of that corner as previously restored or reestablished by distance and direction. Show the discrepancy on the plan view drawing under (a), above. Show the distances between the corner as previously restored or reestablished and (1) the corner as restored or reestablished, and (2) to at least 4 of the witness monuments shown on the drawing in (a), above.  
DOT DISK DOES IS NOT IN THE SAME POSITION AS THE FOUND CUT LIMESTONE.  
DID NOT ACCEPT DISK.

(E) Was the corner reestablished through lost corner proportionate methods? If so, show the method, including the directions and distances to other public land survey corners used as evidence or used for proportioning the corner location.

I, Donald Barnes, hereby certify that the corner points as identified by the corner code index were, in a field survey on, November 9, 1992, established, re-established, monumented, re-monumented, recovered or restored as expressed below and in conformance with the regulations and rules as required in the current manual of survey instructions of the United States Department of Interior, Bureau of Land Management.

seal

*Donald Barnes*  
11/30/92

AFFIX YOUR LAND SURVEYOR SEAL

COUNTY SURVEYOR FILING DATA

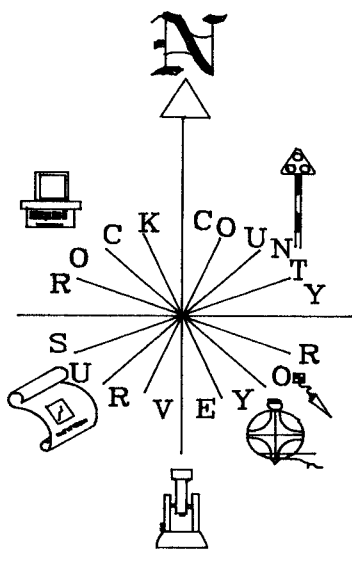
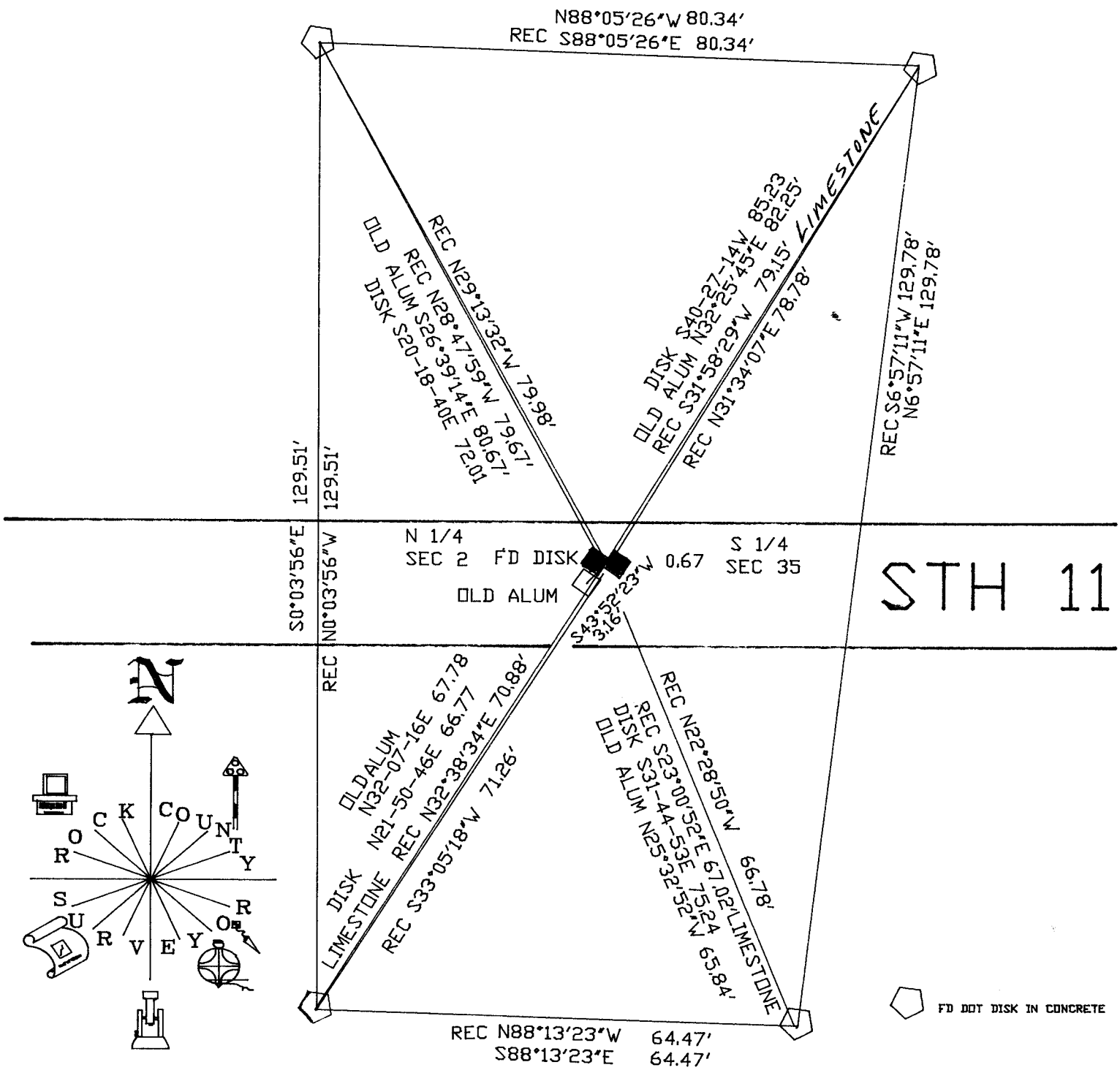
Date of computer entry \_\_\_\_\_

Date microfilmed \_\_\_\_\_

Number of included sheets \_\_\_\_\_  
CORNER CODE

A19(2)

Donald Barnes  
11/30/92



STH 11

FD DOT DISK IN CONCRETE

N 1/4 COR SEC 2 PLYMOUTH TWP  
IS ON THE WEST SIDE. FOUND CUT LIMESTONE.

A 19(2)