

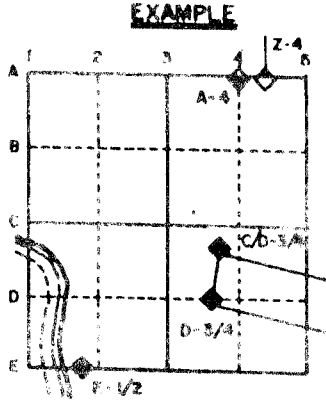
U.S. PUBLIC LAND SURVEY MONUMENT RECORD

For Public Land Survey Corners in the
T. 2 N., R. 11 E.

CORNER CODE INDEX

	1	2	3	4	5	6	7	8	9	10	11	12	13	14	15	16	17	18	19	20	21	22	23	24	25
A																									
B																									
C	6																								
D		5																							
E			4																						
F				3																					
G					2																				
H																									
I																									
J																									
K																									
L																									
M																									
N																									
O																									
P																									
Q																									
R																									
S																									
T																									
U																									
V																									
W																									
X																									
Y																									
Z																									

PLACE MONUMENT SYMBOL (◆) AT PROPER
LOCATION ON ABOVE INDEX



PLYMOUTH TWP
ROCK COUNTY WI

IF AVAILABLE
STATE PLANE COORDINATES

North (Y) _____ Eleve. (Z) _____
East (X) _____ Zone _____
Hor. Datum _____ Vert. Datum _____

(a) ◆ CORNER MONUMENT ○ WITNESS MONUMENT

BEARINGS ARE BASED ON:

FIELD BOOK _____ PAGE # _____

SHOW A PLAN VIEW DRAWING DEPICTING THE CORNER MONUMENT AND SURROUNDING PHYSICAL FEATURES, INCLUDING THE EXCAVATION AREA AND DEPTH. THE CORNER MONUMENT SHALL HAVE THE FOLLOWING CHARACTERISTICS: 1) HAVE AT LEAST TWO PREDETERMINED BREAK-OFF POINTS. 2) IF BROKEN, LEAVE A PERMANENTLY MAGNETIZED REMNANT AT THE ORIGINAL POINT. 3) MUST BE EXTENDABLE. 4) THE CAP IS INSCRIBED: ROCK COUNTY SURVEY MONUMENT - PENALTY FOR DISTURBING MARKER. 5) OR AN EXISTING CUT LIMESTONE. AN IRON PIPE 1 1/2" x 4'0" (MINIMUM) MAY BE USED IN AREAS WHERE GROUND WATER IS WITHIN ONE FOOT OF THE SURFACE. IF THE CORNER IS OCCUPIED BY AN IMPROVEMENT (MANHOLE, BURIED CABLE, ETC.) ANY DURABLE, DISTINCT MONUMENT MAY BE USED. CORNERS SHALL BE REFERENCED WITH AT LEAST 4 DURABLE WITNESS MONUMENTS. WITNESS MONUMENTS SHALL BE MADE OF CONCRETE, NATURAL STONE, IRON OR OTHER EQUALLY DURABLE MATERIAL, EXCEPT WOOD. DESCRIBE THE CORNER AND THE WITNESS MONUMENTS.

CORNER CODE:
A 17 (2)

(B) Describe any record evidence, monument evidence, occupational evidence, testimonial evidence or any other material evidence you considered, and whether the monument was found or placed.

- 1833 HARRISON ORIGINAL SURVEYOR. INTERSECTED NORTH BOUNDARY AT POST AND MARKED SAME FOR SECTIONS 2 & 3.
- 1866 LOCKE REMONUMENTATION INTERSECTED NORTH BOUNDARY 4 LINKS WEST OF CORNER. FOUND OLD STAKE IN CENTER OF HIGHWAYS AND NEARLY IN LINE WITH FENCE RUNNING NORTH. PLACED CUT LIMESTONE. SHOWS A DISTANCE OF 2654.86' TO THE NORTH QUARTER CORNER OF SECTION 3, 2657.49' TO THE NORTH QUARTER CORNER OF SECTION 2, AND 2702.70' TO THE EAST QUARTER CORNER OF SECTION 3.
- 1877 RUGER VOL 2 PG 234 FOUND STONE MONUMENT. USED CORNER TO SUBDIVIDE THE NW QUARTER OF SECTION 2. SHOWS A DISTANCE OF 2654.19 TO THE NORTH QUARTER CORNER OF SECTION 2.
- 1933 SUNNY VOL 3 PG 235 SET 1"X36" PIPE IN CONCRETE PAVEMENT; 7.9' NORTH OF CENTERLINE OF PAVEMENT. SHOWS A DISTANCE OF 2653.6 TO THE NORTH QUARTER CORNER OF SECTION 3 AND 2656.9 TO THE NORTH QUARTER CORNER OF SECTION 2.
- 1958 BATTERMAN JR. VOL 3 PG 364 FOUND 1" PIPE 1' FROM NORTH EDGE OF PAVEMENT.
- 1977 BARNES VOL 5 PG 364 FOUND 1" PIPE 0.3' DEEP AND REPLACED WITH ALUMINUM MONUMENT. PLACED REFERENCE PIPES.
- 1988 BARNES A 17 FOUND LARGE 6 1/2" X 9 1/2" X 12' STONE POINT UP AND UNDER THAT FOUND CUT LIMESTONE. CUT LIMESTONE IS 2.6' DEEP. PLACED MAGNET ON TOP OF STONE. EXCAVATION INDICATES THAT SUNNY DID NOT DIG FOR CORNER.

FOUND DOT DISK.

C) Was the corner restored through acceptance of (1) an obliterated evidence location, or, (2) a found perpetuated location?
ACCEPTED FOUND CUT LIMESTONE. DID NOT ACCEPT DOT DISK.

D) Describe any material discrepancy between the location of the corner as restored or reestablished and the location of that corner as previously restored or reestablished by distance and direction. Show the discrepancy on the plan view drawing under (a), above. Show the distances between the corner as previously restored or reestablished and (1) the corner as restored or reestablished, and (2) to at least 4 of the witness monuments shown on the drawing in (a), above.
IT APPEARS THAT DOT MONUMENTED THE OLD ALUMINUM MONUMENT LOCATION.

I, Donald Barnes, hereby certify that the corner points as identified by the corner code index were, in a field survey on, November 9, 1992, established, re-established, monumented, re-monumented, recovered or restored as expressed below and in conformance with the regulations and rules as required in the current manual of survey instructions of the United States Department of Interior, Bureau of Land Management.

Donald Barnes
seal

11/30/92

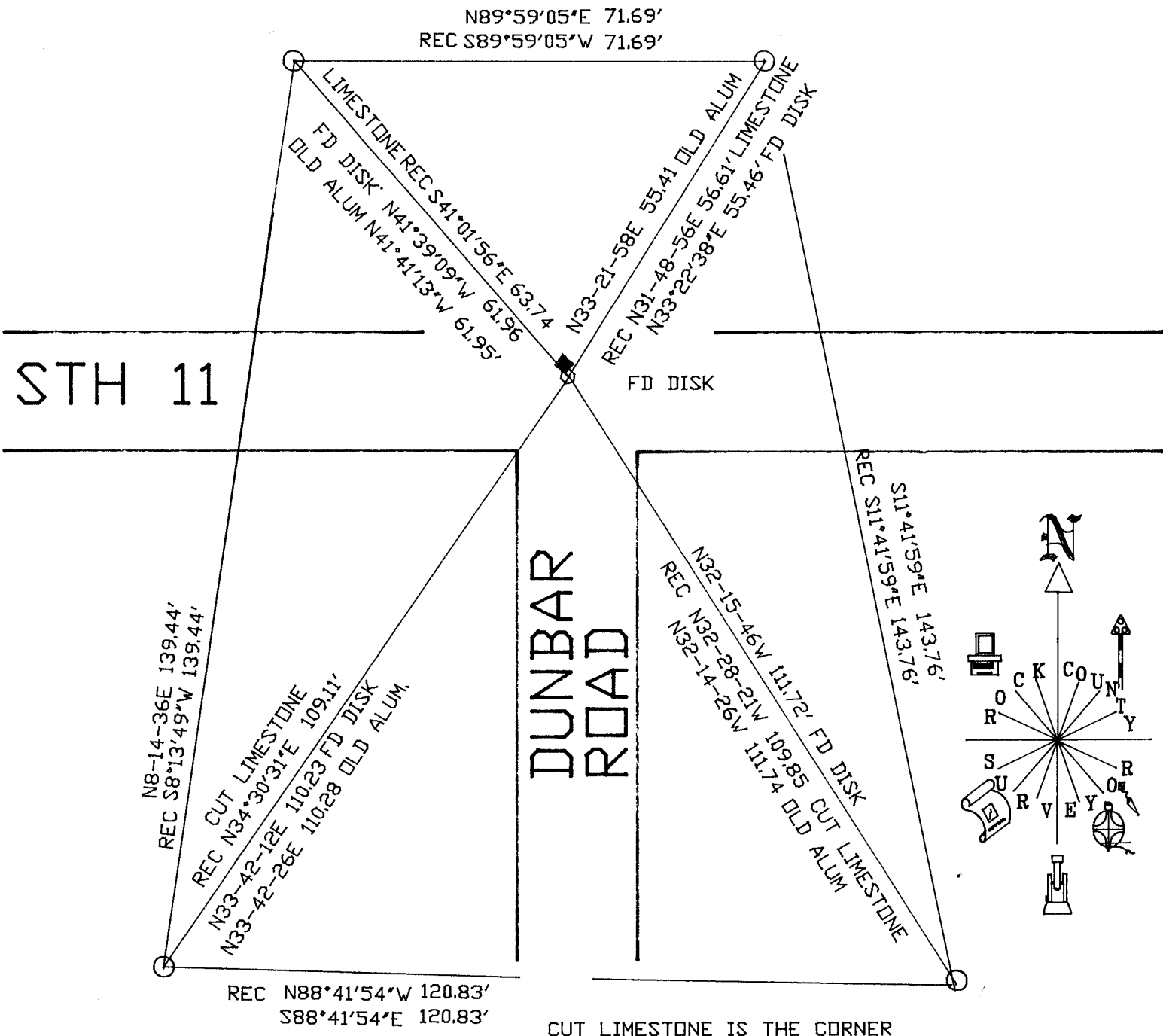
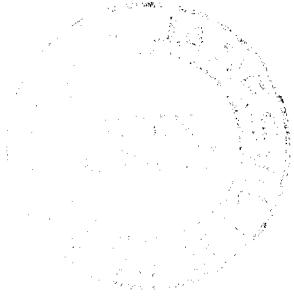
Date microfilmed _____

Number of included sheets _____
CORNER CODE _____

AFFIX YOUR LAND SURVEYOR SEAL

A 17 (2)

Donald Barnes
11/30/92



CUT Limestone IS THE CORNER

FOUND DOT DISK
IN CONCRETE IN PAVEMENT.

- ◆ OLD ALUM. MONUMENT
- CUT Limestone
- FOUND DOT DISK IN CONCRETE

A 17(2)