

# U. S. PUBLIC LAND SURVEY MONUMENT RECORD

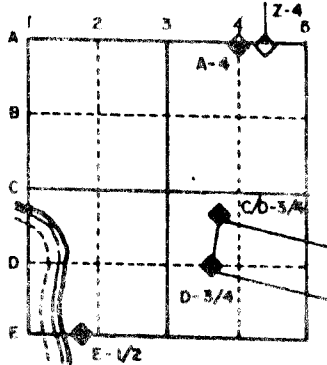
For Public Land Survey Corners in the  
T. 2 N., R. 11 E.

## CORNER CODE INDEX

	1	2	3	4	5	6	7	8	9	10	11	12	13	14	15	16	17	18	19	20	21	22	23	24	25
A																									
B																									
C	6																								
D		5																							
E			4																						
F				3																					
G					2																				
H																									
I																									
J																									
K																									
L	7																								
M		8																							
N			9																						
O				10																					
P					11																				
Q						12																			
R							13																		
S								14																	
T									15																
U										16															
V											17														
W												18													
X													19												
Y														20											
Z															21										
																22									
																	23								
																		24							
																			25						
																				26					
																					27				
																						28			
																							29		
																								30	
																									31
																									32
																									33
																									34
																									35
																									36

PLACE MONUMENT SYMBOL (◆) AT PROPER LOCATION ON ABOVE INDEX

### EXAMPLE



PLYMOUTH TWP  
ROCK COUNTY WI

### IF AVAILABLE STATE PLANE COORDINATES

North (Y) \_\_\_\_\_ Eleve. (Z) \_\_\_\_\_  
East (X) \_\_\_\_\_ Zone \_\_\_\_\_  
Hor. Datum \_\_\_\_\_ Vert. Datum \_\_\_\_\_

(a.)

◆ CORNER MONUMENT

○ WITNESS MONUMENT

BEARINGS ARE BASED ON:

1 OF 2

MICROFILMED

FIELD BOOK \_\_\_\_\_ PAGE # \_\_\_\_\_

SHOW A PLAN VIEW DRAWING DEPICTING THE CORNER MONUMENT AND SURROUNDING PHYSICAL FEATURES, INCLUDING THE EXCAVATION AREA AND DEPTH. THE CORNER MONUMENT SHALL HAVE THE FOLLOWING CHARACTERISTICS: 1) HAVE AT LEAST TWO PREDETERMINED BREAK-OFF POINTS. 2) IF BROKEN, LEAVE A PERMANENTLY MAGNETIZED REMNANT AT THE ORIGINAL POINT. 3) MUST BE EXTENDABLE. 4) THE CAP IS INSCRIBED: ROCK COUNTY SURVEY MONUMENT - PENALTY FOR DISTURBING MARKER. 5) OR AN EXISTING CUT LIMESTONE. AN IRON PIPE 1 1/2" x 4'0" (MINIMUM) MAY BE USED IN AREAS WHERE GROUND WATER IS WITHIN ONE FOOT OF THE SURFACE. IF THE CORNER IS OCCUPIED BY AN IMPROVEMENT (MANHOLE, BURIED CABLE, ETC.) ANY DURABLE, DISTINCT MONUMENT MAY BE USED. CORNERS SHALL BE REFERENCED WITH AT LEAST 4 DURABLE WITNESS MONUMENTS. WITNESS MONUMENTS SHALL BE MADE OF CONCRETE, NATURAL STONE, IRON OR OTHER EQUALLY DURABLE MATERIAL, EXCEPT WOOD. DESCRIBE THE CORNER AND THE WITNESS MONUMENTS.

CORNER CODE:  
A 21 (1)

(B) Describe any record evidence. monument evidence, occupational evidence, testimonial evidence ( ) other material evidence ( ) considered, and whether the monument was found or placed.

1833 HARRISON ORIGINAL SURVEYOR. INTERSECTED NORTH BOUNDARY 3.3' WEST OF POST. BUR OAK 24 S41E 316.8'; BUR OAK 14 S45W 293.7'

1868 LOCKE REMONUMENTATION NOTES. WEST ON NORTH LINE SECTION 1. INTERSECTED WEST BOUNDARY 14.52' SOUTH OF CORNER. FOUND BT IN SECTION 2. INTERSECTED CORNER FOR TOWN 3. FOUND BT IN SECTION 35 AND STUMP OF BT IN SECTION 36. CORNER IN CENTER OF HIGHWAY. CALLS FOR 2667.06 TO N 1/4 CORNER OF SECTION 1, AND THE SE CORNER OF SECTION 35 IS 3.3' EAST OF THE NE CORNER OF SECTION 2. CALLS FOR 2621.52 TO THE EAST 1/4 CORNER OF SECTION 2 AND 2656.83' TO THE N 1/4 CORNER OF SECTION 2. INSTALLED CUT LIMESTONE.

1877 RUGER VOL 2 PG 234 FOUND STONE MONUMENT. CALLS FOR 2652.54' TO N 1/4 CORNER OF SECTION 2 AND 2616.89' TO EAST QUARTER CORNER OF SECTION 2.

1933 SUNNY VOL 3 PG 234 & 235 SET 1X30" LONG PIPE IN CONCRETE PAVEMENT, 2.4' NORTH OF CENTER OF SAME. CALLS FOR 2667.2' TO N 1/4 CORNER OF SECTION 1 AND 2621.6 TO W 1/4 CORNER OF SECTION 1.

1962 BATTERMAN JR. VOL 4 PG 142 FOUND 1" PIPE UNDER BLACKTOP AND REFERENCED SAME.

1977 FOUND A PK AS RECORDED AS THE NE CORNER OF SECTION 2 T2N R11E PLYMOUTH IN VOL 4 PG 142 & VOL 5 PG 140. IT IS ERRONEOUS. DUG AND FOUND 1" PIPE .3 DEEP. IT AGREED WITH THE DISTANCE TO THE N 1/4 CORNER OF SECTION 2 AS RECORDED IN VOL 3 PG 235. SET ALUMINUM MONUMENT. DUG AND FOUND NOTHING AT SE CORNER OF SECTION 35. SET ALUM MONUMENT AT RECORD DISTANCE FROM NE CORNER OF SEC 2 AS RECORDED IN VOL 3 PG 235. CALLS FOR 2656.86 TO N 1/4 CORNER OF SECTION 2.

1988 BARNES VOL 5 PG 388 & 289 CALLS FOR RECORD DISTANCES AND CALLS FOR N89-14-40E 2654.68 TO N 1/4 COR SEC 2, S0-41-45E 2621.72 TO E 1/4 COR SEC 2, S89-56-08E 2667.20 TO N 1/4 COR SEC 1, AND N1-01-11W 2660.68 TO THE E 1/4 CORNER OF SECTION 35.

FOUND DOT DISK.

C) Was the corner restored through acceptance of (1) an obliterated evidence location, or, (2) a found perpetuated location?  
ACCEPTED FOUND DISK.

I, Donald Barnes, hereby certify that the corner points as identified by the corner code index were, in a field survey on, November 9, 1992, established, re-established, monumented, re-monumented, recovered or restored as expressed below and in conformance with the regulations and rules as required in the current manual of survey instructions of the United States Department of Interior, Bureau of Land Management.

*Donald Barnes*  
seal

*11/30/92*

AFFIX YOUR LAND SURVEYOR SEAL

COUNTY SURVEYOR FILING DATA

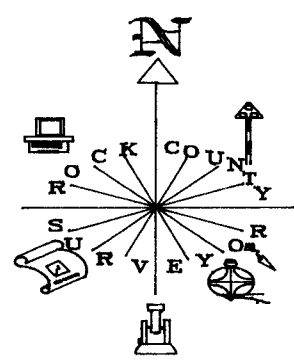
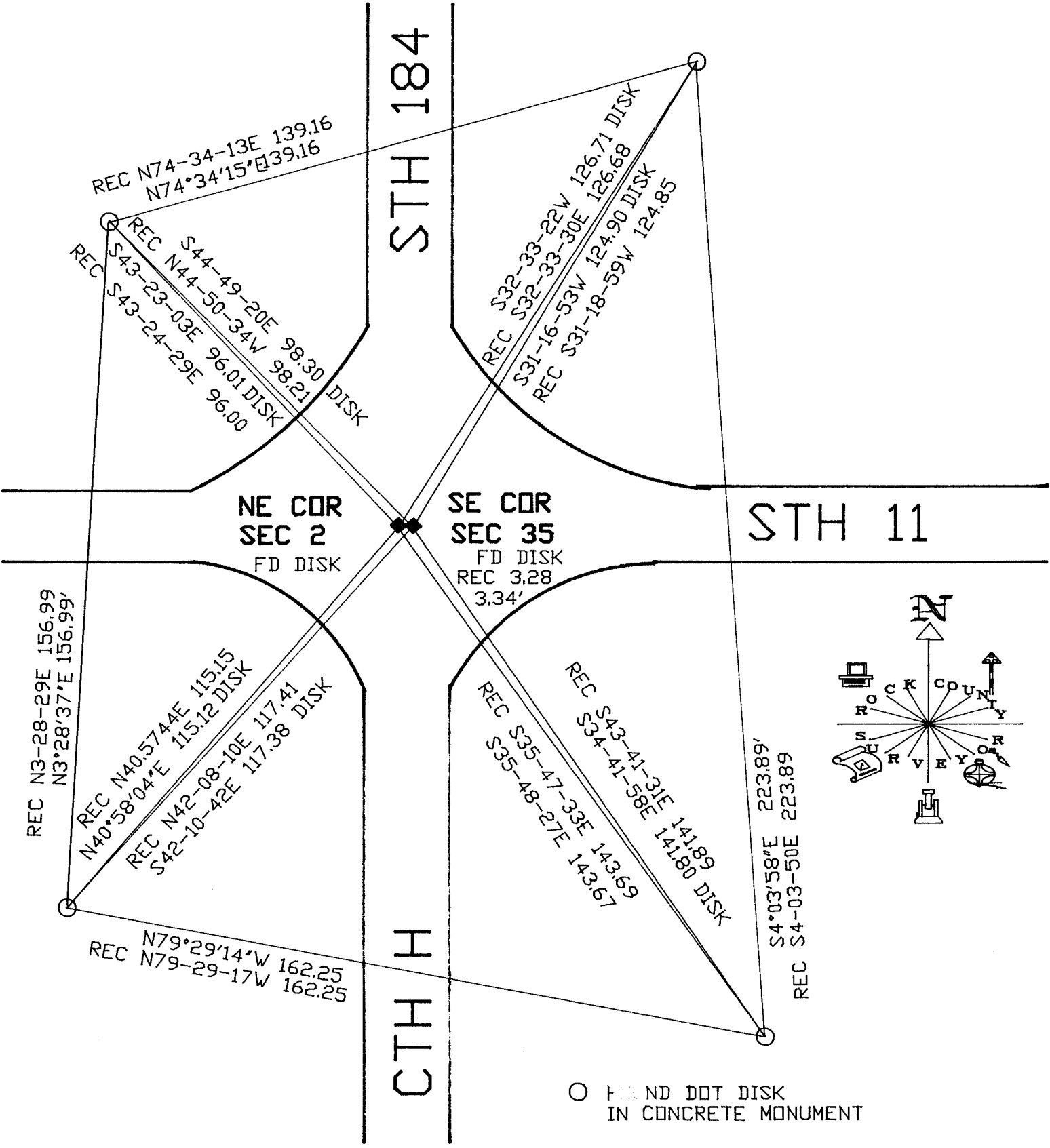
Date of computer entry \_\_\_\_\_

Date microfilmed \_\_\_\_\_

Number of included sheets \_\_\_\_\_  
CORNER CODE

*A-21(1)*

*Donald Barnes*  
11/30/92



○ FOUND DOT DISK  
IN CONCRETE MONUMENT

A 21 ( 1 )