

U.S. PUBLIC LAND SURVEY MONUMENT RECORD

For Public Land Survey Corners In:

WI ADMINISTRATIVE CODE A-E 7.08 REQUIREMENT

T. 1 N. - R. 14 E. of the 4th P.M.

CORNER CODE INDEX

CLINTON

ROCK COUNTY WI
TWP

(PLACE "◆" SYMBOL AT PROPER PLSS CORNER LOCATION)

A	2	3	4	5	6	7	8	9	10	11	12	13	14	15	16	17	18	19	20	21	22	23	24	25	A	
B																										B
C	6																									C
D																										D
E																										E
F																										F
G	7																									G
H																										H
J																										J
K																										K
L	18																									L
M																										M
N																										N
O																										O
P	19																									P
Q																										Q
R																										R
S																										S
T	30																									T
U																										U
V																										V
W																										W
X	31																									X
Y																										Y
Z																										Z
	1	2	3	4	5	6	7	8	9	10	11	12	13	14	15	16	17	18	19	20	21	22	23	24	25	

COORDINATES

(GNSS DERIVED VIA WISCORS)

NORTHING: 205106.79 ELEV: _____

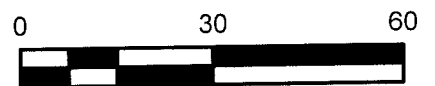
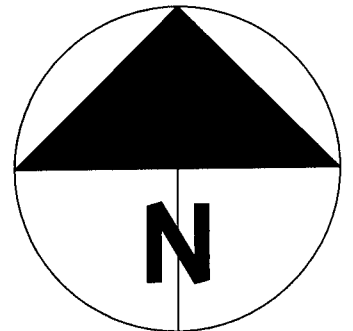
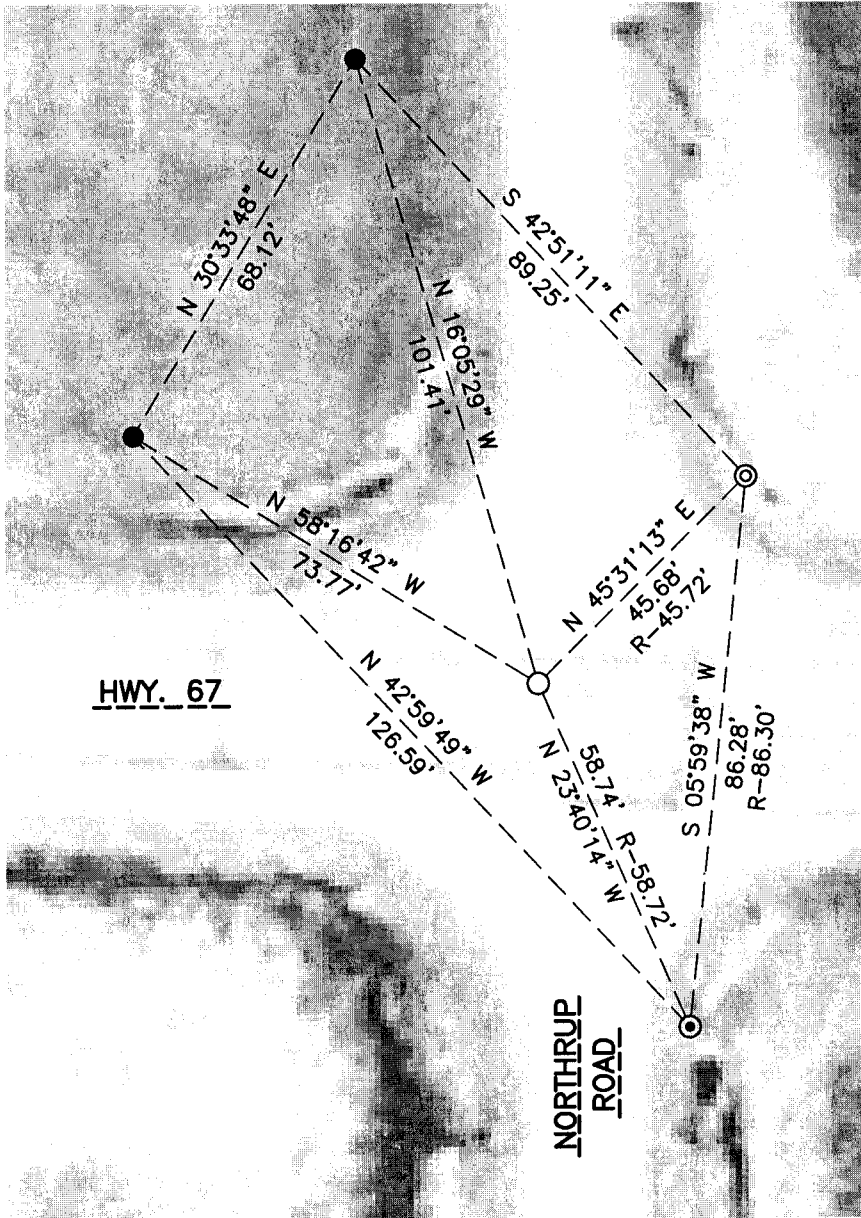
EASTING: 546508.43 _____

Hor. Datum: WCCS-ROCK, (NA2011)

Vertical Datum: NAVD 88

(a) LEGEND

- - 5/8" x 24" REBAR SET, (RED CAP W/"PLSS WITNESS")
- - COTTON GIN SPINDLE SET OVER A FOUND/BROKEN CAST IRON MONUMENT
- ⊙ - IRON REBAR FOUND
- ⊗ - IRON PIPE FOUND



PAGE 1 OF 2

B) Describe any record evidence, monument evidence, occupational evidence, testimonial evidence or any other material evidence you considered, and whether the monument was found or placed.

In advance of Hwy. 67 resurfacing, (Hwy. 140 – Walworth County line), I set control and surveyed existing monuments, (exposed), and witnesses throughout the project. At this location I recovered the broken cast iron monument, (inside of pvc tube), and two, (2), witness monuments from a tie sheet, (V-15(2)), prepared by Don Barnes on May 10, 1994. Two other monuments were recovered however, one was bent and the other was covered by recent paving activities.

Post construction and witnessed per the sketch, I set a cotton gin spindle at the same location as the broken cast iron monument below.

C) Was the corner restored through acceptance of (1) an obliterated evidence location, or, (2) a found perpetuated location?

Restored a found perpetuated location.

D) Describe any material discrepancy between the location of the corner as restored or reestablished and the location of that corner as previously restored or reestablished by distance and direction. Show the discrepancy on the plan view drawing under (a), above. Show the distances between the corner as previously restored or reestablished and (1) the corner as restored or reestablished, and (2) to at least 4 of the witness monuments shown on the drawing in (a), above.

Any discrepancies are noted on the face of the map with the most recently filed tie-sheets distances noted with an “R”. Absent the “R” distance to a found monument, assume I match the most recent tie-sheet distance. Bearing discrepancies are not noted.

(E) Was the corner reestablished through lost corner proportionate methods? If so, show the method, including the directions and distances to other public land survey corners used as evidence or used for proportioning the corner location.

N/A

I, Jason R. Houle, hereby certify that the corner location as identified by the corner code index was determined by me under my direction and control and that this U.S. Public Land Survey Monument Record is correct and complete to the best of my knowledge and belief.

CORNER CODE: V-15(3)
(A.E. 7.08 REQUIREMENT)

