

Paper weight-110# (minimum)

Black nonfading ink required

U.S. PUBLIC LAND SURVEY MONUMENT RECORD

For Public Land Survey Corners In:

WI ADMINISTRATIVE CODE A-E 7.08 REQUIREMENT

T. 2 N. R. 14 E. 4th P.M.

REV 10/23/2004

USMONREC.DWG

CORNER CODE INDEX

BRADFORD TWP

ROCK COUNTY WI

IF AVAILABLE

ROCK COUNTY COORDINATES PREFERRED

A	1	2	3	4	5	6	7	8	9	10	11	12	13	14	15	16	17	18	19	20	21	22	23	24	25	A
B																										B
C																										C
D																										D
E																										E
F																										F
G																										G
H																										H
J																										J
K																										K
L																										L
M																										M
N																										N
O																										O
P																										P
Q																										Q
R																										R
S																										S
T																										T
U																										U
V																										V
W																										W
X																										X
Y																										Y
Z																										Z

North _____ Elev. _____

East _____

Hor. Datum _____ Vert. Datum _____

LATITUDE _____ ELLIPS. HT. _____

LONGITUDE _____

NAD83(91) _____ NETWORK ADJ. YR _____

GPS (X) _____ TRAVERSE (X) _____

BASED ON THE FOLLOWING CONTROL: _____

PLACE MONUMENT SYMBOL AT PROPER LOCATION ON ABOVE INDEX

CORNER MONUMENT WITNESS MONUMENT

BEARINGS ARE BASED ON: _____

FIELD BOOK _____ PAGE # _____

SHEET 1 OF 4

SHOW A PLAN VIEW DRAWING DEPICTING THE CORNER MONUMENT AND SURROUNDING PHYSICAL FEATURES, INCLUDING THE EXCAVATION AREA AND DEPTH.

PLANNING & ZONING COMMITTEE ADOPTED THIS FORM ON 12/2/1982

CORNER CODE E-5(3)

BR523 SWCORSEC5

(B) Describe any record evidence, monument evidence, occupational evidence, testimonial evidence or any other material evidence you considered, and whether the monument was found or placed.

- 1885 RUGER VOL 2 PG 288 FD OLD STAKE SURROUNDED BY 3 HH STONES. SET HH STONE 24X14XB SURROUNDED IT BY 6 HH STONES. 2664.42 TO W 1/4 COR SEC 5.
- 1920 BATTERMAN VOL 3 G 99 & MAP #520 SET IRON ROD IN PLACE OF LIMESTONE. 2651.15 TO IRON ROD @ S 1/4 COR SEC 5 & 5302.30 TO IRON ROD ABOVE LIMESTONE @ SE COR SEC 5
- 1922 ?? VOL 3 PG 120 FD CORNER. TREE 35.3 TO SW & TREE 43 TO SW.
- 1960 BATTERMAN MAP #525 SET 1" PIPE ACCORDING TO OLD REF. TIES. SEE VOL 4 PG 50 COUNTY SURVEYOR RECORDS. ANGLE 88-39-30 @ SE COR SEC 6 FROM SOUTH LINE OF SEC 6 TO EAST LINE OF SEC 6.
- 1960 BATTERMAN VOL 4 PG 50 RESET SE COR OF SEC 6-2-14, ACCORDING TO REFERENCE TIES MADE BY R.H. BATTERMAN SR. IN 1920, & REFERENCED. CALLS FOR 1" PIPE. SET 3 REFERENCE PIPES.
- 1965 MEYER WIDOT MAP #6502 TIES FOR COR. SAME AS 1960 BATTERMAN TIES. NOTE: SECTION CORNER LIES APPROX. 6" OFF S. EDGE OF USTH 14. RESURFACING DID NOT AFFECT IRON PIN OTHER THAN PLACING 3" NEW GRAVEL OVER IT. RALPH COMBS OF CO. SURVEYOR'S OFFICE VISITED SITE ON 6-23-65 AND STATED CONSTRUCTION WOULD NOT INTERFERE WITH IRON PINS. ALSO SEE PROJECT DIARY. ALL IRON PINS LOCATED AS OF 6-23-65
- 1975 JENSEN MAP #537 SET PIPE 45.52 NORTH OF SE COR SEC 6 ON SEC LINE. 2669.31 TO E 1/4 COR SEC 6. CENTER OF PVMT IS 11.5 NORTH OF SEC COR.
- 1975 JENSEN CSM VOL 5 PG 21 FD R/R SPIKE. 11.50' TO CENTER OF STH 11.
- 1978 JENSEN CSM VOL 8 PG 174 FD R/R SPIKE. 11.50' TO CENTER OF STH 11.
- 1978 JENSEN CSM VOL 8 PG 178 FD R/R SPIKE. 11.50' TO CENTER OF STH 11.
- 1980 COOPER CSM VOL 9 PG 237 FD R/R SPIKE 11.50' TO CENTER OF STH 11.
- 1981 WIDOT E-5 TIES NEAR NW COR OF SEC 8. APPEARS TO BE CURVE RADIUS.
- 1981 BARNES VOL 6 PG 149 FD R/R SPIKE & UNDERT THAT 1" IRON PIPE. PIPE AGREED WITH ALL REC. TIES. REPLACED WITH ALUM. MON, 0.5' SOUTH OF SOUTH EDGE OF PVMT.
- 1982 FARRIS CSM VOL 11 PG 23 FD R/R SPIKE. FD PIPE ON NORTH R/W LINE (NO DISTANCE TO IT)
- 1982 BARNES VOL 6 PG 254 STATES NOTHING ABOUT MON. CALLS FOR N88-36-58W 2650.85 FROM NE COR SEC 8 TO N 1/4 COR SEC 8 & N88-36-58W 2650.85 FROM N 1/4 COR SEC 8 TO NW COR SEC 8
- 1984 BARNES E-5(1) FD BROKEN ALUM MON 30" DEEP. SET POLY MON ON TOP. FD REC. REFERENCE TIES.
- 1985 COMBS MAP #13210 FD CI 4.10 NORTH OF CENTER OF PVMT. SET PIPE 37.12 ON LINE WITH N 1/4 COR & S 1/4 COR SEC 8, SET PIPE N89-25-01W 64.07 OF AFORESAID PIPE. FD POLYSTRENE MON @ NW COR SEC 8.
- 199? WIDOT E-5(2) NAD83(91) 240,641.32; 2,271,126.15 CONVERT-258,888.94; 533,045.22. POINT SET FROM REFERENCE MONUMENTS.
- 1991 COMBS MAP #11781 FD POLYSTRENE MON. TOP GONE. SHOWS AS NORTH OF SOUTH PVMT EDGE.
- 2006 GUARD CSM VOL 30 PG 265 FD PK. N00-11-39W 2660.22 TO ALUM @ W 1/4 COR SEC 5, N00-04-23W 2726.9 FROM W 1/4 COR SEC 5 TO ALUM @ NW COR SEC 5.

SHEET 1 OF 4
CORNER CODE E-5(3)

Donald James
D-22-08

BR 523

CONTACTED AFTER PVMT WAS MILLED. INSTALLED STEEL SURVEY MONUMENT SPIKE AFTER FINAL MATT WAS INSTALLED. STEEL SURVEY SPIKE IS 3" LONG, 3/8" DIAMETER, & TOP IS 1" IN DIAMETER AND STAMPED "SURVEY MARKER". DID NOT UNCOVER OLD MONUMENT. THERE WAS A MAGNETIC READING FROM THE LOCATION OF THE SECTION CORNER POSITION. SUB-BASE MONUMENT IS STILL IN. RECORD TIES CHECKED VERY WELL.

C) Was the corner restored through acceptance of (1) an obliterated evidence location, or, (2) a found perpetuated location?

ACCEPTED FOUND PERPETUATED LOCATION.

D) Describe any material discrepancy between the location of the corner as restored or reestablished and the location of that corner as previously restored or reestablished by distance and direction. Show the discrepancy on the plan view drawing under (a), above. Show the distances between the corner as previously restored or reestablished and (1) the corner as restored or reestablished, and (2) to at least 4 of the witness monuments shown on the drawing in (a), above.

NONE

(E) Was the corner reestablished through lost corner proportionate methods? If so, show the method, including the directions and distances to other public land survey corners used as evidence or used for proportioning the corner location.

NO

I, **Donald Barnes**, hereby certify that the corner location as identified by the corner code index was determined by me under my direction and control and that this U.S. Public Land Survey Monument Record is correct and complete to the best of my knowledge and belief.

Seal
Donald Barnes

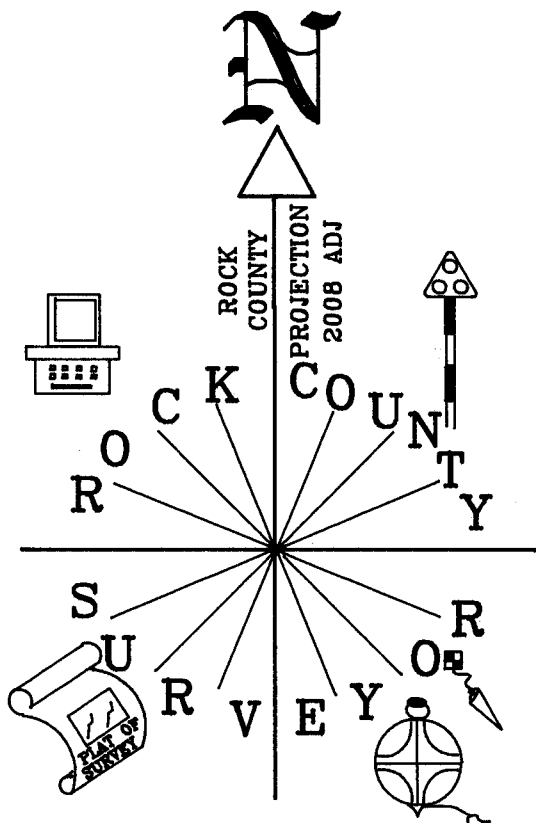
Emboss
Barnes

SHEET 2 OF 4

10/22/08

CORNER CODE **E-5(3)**

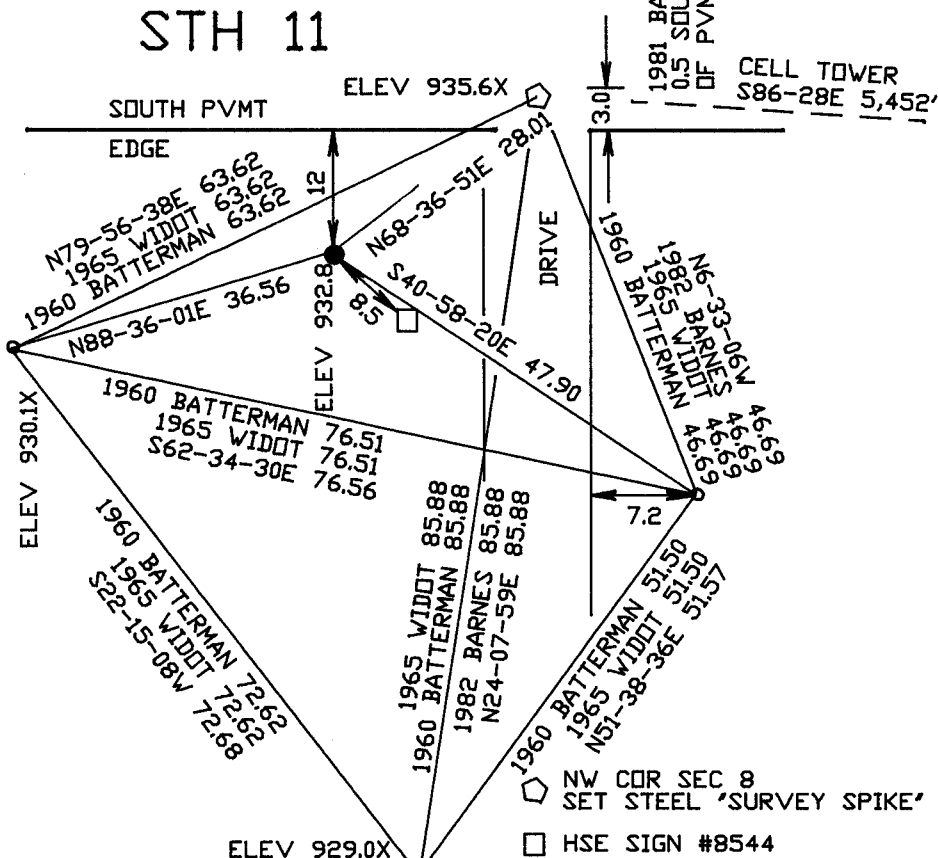
A.E. 7.08 REQUIREMENT



NW COR
SEC 8
BRADFORD TWP
T2N R14E

NOT TO SCALE

STH 11



OBSERVATION SHEET #228
VERTICAL DATUM BASED ON
ORTHO PHOTOS
SHEET 3 OF 4

E-5(3)

Small
EMBOSSSED SEAL

Raines
10/24/08

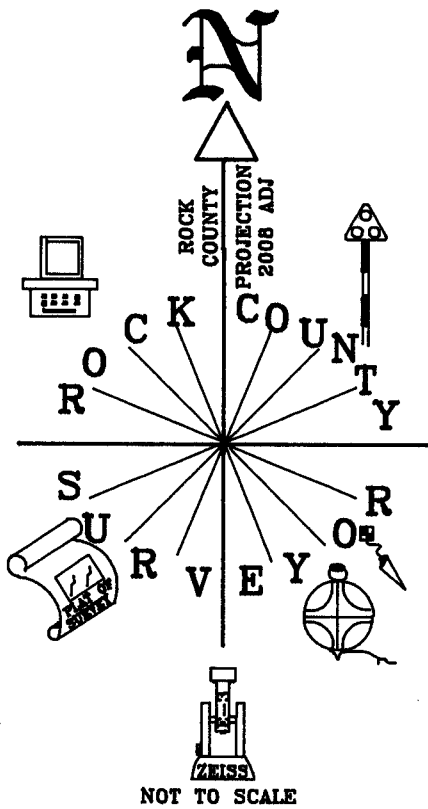
SEC 6

1960 BATTERMAN #525
88-39-30
88-38-48

NO-08-06W 2659.16
2006 GUARD CSM 13-265 NO-11-39W 2660.22
1982 BARNES PROJ NO-00W 2660.1X
1975 JENSEN MAP# 537 2669.31
1885 RUGER VOL2 PG 288 2664.42

NO-04-23W 2726.29
2006 GUARD CSM 13-265 NO-04-23W 2726.90
1982 BARNES PROJ. NO-04-11E 2726.28
1885 RUGER VOL 2 PG 288 2725.14

SEC 5



S88-37-29E 1323.72 S88-54-24E 1327.13
1325.58 1920 BATTERMAN 1325.58

1960 BATTERMAN 2656.08
1981 WIDOT S89-25-09E 2657.21
1982 BARNES PROJ. S88-38E 2658.2X
S88-46-54E 2657.68

1920 BATTERMAN VOL 4 PG 2651.15
1982 BARNES PROJ S88-36E 2649.3X
S88-44-39E 2650.23

1920 BATTERMAN VOL 4 PG 2651.15
1982 BARNES PROJ. S88-36E 2650.5X
S88-45-58E 2650.84

SEC 7

SEC 8

Donald Barnes
EMBOSSSED SEAL
9/22/08

SHEET 4 OF 4

E-5(3)