

U.S. PUBLIC LAND SURVEY MONUMENT RECORD

For Public Land Survey Corners in:

WI ADMINISTRATIVE CODE A-E 7.08 REQUIREMENT

T. 1 N., R. 12 E

CORNER CODE INDEX

A	1	2	3	4	5	6	7	8	9	10	11	12	13	14	15	16	17	18	19	20	21	22	23	24	25
B																									
C	6																								
D																									
E																									
F																									
G	1																								
H																									
J																									
K	18																								
L																									
M																									
N																									
O																									
P	19																								
Q																									
R																									
S																									
T	30																								
U																									
V																									
W																									
X	31																								
Y																									
Z																									

PLACE MONUMENT SYMBOL  AT PROPER LOCATION ON ABOVE INDEX

BELOIT TWP

ROCK COUNTY WI

IF AVAILABLE
ROCK COUNTY COORDINATES PREFERRED

North 211,611.38 Elev. _____

East 490,947.77

Hor. Datum COUNTY Vert. Datum _____

LATITUDE _____ ELLIPS. HT. _____

LONGITUDE _____

GPS (X) _____ TRAVERSE (X) _____

BASED ON THE FOLLOWING CONTROL:

 CORNER MONUMENT

 WITNESS MONUMENT

(a)

BEARINGS ARE BASED ON:

FIELD BOOK _____ PAGE # _____

SHEET 1 OF 3

SHOW A PLAN VIEW DRAWING DEPICTING THE CORNER MONUMENT AND SURROUNDING PHYSICAL FEATURES, INCLUDING THE EXCAVATION AREA AND DEPTH.

PLANNING & ZONING COMMITTEE ADOPTED THE ABOVE FORM ON 12/2/1982

CORNER CODE R-21(1)

be591

(B) Describe any record evidence, monument evidence, occupational evidence, testimonial evidence or any other material evidence you considered, and whether the monument was found or placed.

- 1834 HARRISON EAST BETWEEN SEC 23 & 26
2442 ENTER RIVER BOTTOM
2514.6 TO A TRAIL SUPPOSED TO BE THAT OF GEN ALEXANDER'S
BRIGADE OF ILLINOIS MILITIA IN 1832
2640 QUARTER SEC COR.
SET A POST & RAISED A MOUND
3519.12 INT. THE RIGHT BANK OF ROCK RIVER SET MEANDER
POST
BUR OAK 18 S82W 869
NO OTHER NEAR
- 1836 LYON NORTH BETWEEN 25 & 26
2376 INDIAN TRAIL NE & SW
2640 SET QUARTER SECTION POST
BUR OAK 15 N77E 60
BUR OAK 10 S73 1/2W 75
3300 ENTERED PRAIRIE
5280 SET POST CORNER TO SECTIONS 23, 24, 25, & 26
BUR OAK 8 N21W 107
WHITE OAK 18 S78 1/2W 321
EAST BETWEEN SECTIONS 24 & 25
198 INDIAN TRAIL LEADING N & S
5305.08 INTERSECTED RANGE LINE 35.64' NORTH OF POST
WEST CORRECTED BETWEEN SECTIONS 24 & 25
2652.54 SET QUARTER SECTION POST & RAISED A MOUND OF EARTH
& SOD 4 FEET SQUARE & 2 1/2 FEET HIGH
5305.08 SECTION CORNER
WEST TRUE LINE BETWEEN SECTION 23 & 26
792 ENTERED ROCK RIVER BOTTOM
1056 INDIAN TRAIL LEADING N & S
1465.2 SET POST ON LEFT BANK OF ROCK RIVER BEARS S.S.W
BUR OAK 22 S34E 85
BUR OAK 14 N82E 136
1829.52 TO RIGHT BANK OF RIVER POST
- 1878 RUGER VOL 2 PG 239 FOUND STAKE, ALSO STUMPS OF B.T.s.
1882 RUGER FOUND STAKE SURROUNDED BY THREE LIMESTONES. ONE OF
THEM BURNT, ALSO FOUND STUMP OF N.W. B.T. SHOWS 2630.1 TO W
1/4 CORNER OF SECTION 25.
1910 CALDWELL SUB "PERRIGO PLACE" BK 7 PG 42. CALLS FOR THE SW
CORNER OF SEC 24 BUT STATES NOTING ABOUT IT. ALSO CALLS FOR
THE SOUTH LINE OF SEC 24 AND BEGINNING OF SUB 997' EAST OF
THE SW COR SEC 24.
1917 BATTERMAN CITY OF БЕЛОИТ NOTES. CALLS FOR LIMESTONE
MONUMENT. CALLS FOR 896.35 TO CENTER OF RIVER RD., 849.10
TO NORTH LINE OF HENRY ST., & 2632.02 TO 2 1/2 GAS PIPE AT
THE W 1/4 COR SEC 25.
1929 BATTERMAN VOL 3 PG 173 FOUND LIMESTONE AT CORNER.
1930 BATTERMAN VOL 3 PG 173 FOUND LIMESTONE.
1939 SUNNY VOL 3 PG 428 FOUND STONE.
1942 BATTERMAN BK 12 PG 35. NEWFIELD'S ADDITION. CALLS FOR A
STONE MONUMENT AT THE CORNER. PLAT SHOWS DISTANCES AND
BEARINGS TO STONE.
1956 SHIMEALL SUB FROEBEL HEIGHTS CALLS FOR A STONE 990.40 NORTH
OF THE SW COR SEC 24.

ESTABLISHED CORNER FROM MONUMENTS THAT I FOUND IN NEWFIELD'S
ADDITION.

C) Was the corner restored through acceptance of (1) an
obliterated evidence location, or, (2) a found perpetuated
location?

RESTORED THROUGH ACCEPTANCE OF OBLITERATED EVIDENCE LOCATION.

Donald Barnes
2/4/98

R-21 (1)

D) Describe any material discrepancy between the location of the corner as restored or reestablished and the location of that corner as previously restored or reestablished by distance and direction. Show the discrepancy on the plan view drawing under (a), above. Show the distances between the corner as previously restored or reestablished and (1) the corner as restored or reestablished, and (2) to at least 4 of the witness monuments shown on the drawing in (a), above.

NONE

(E) Was the corner reestablished through lost corner proportionate methods? If so, show the method, including the directions and distances to other public land survey corners used as evidence or used for proportioning the corner location.

NO

I, Donald Barnes, hereby certify that the corner points as identified by the corner code index were, in a field survey on, MAY 15, 1997, established, re-established, monumented, re-monumented, recovered or restored as expressed below and in conformance with the regulations and rules as required in the current manual of survey instructions of the United States Department of Interior, Bureau of Land Management.

COUNTY SURVEYOR FILING DATA

Date of computer entry _____

Date microfilmed _____

Number of included sheets _____
CORNER CODE

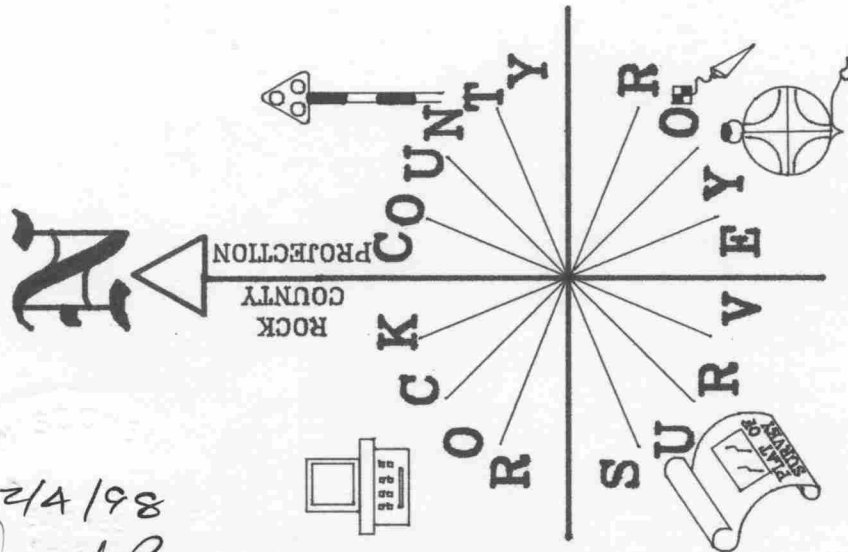
seal

Donald Barnes

1/4/98

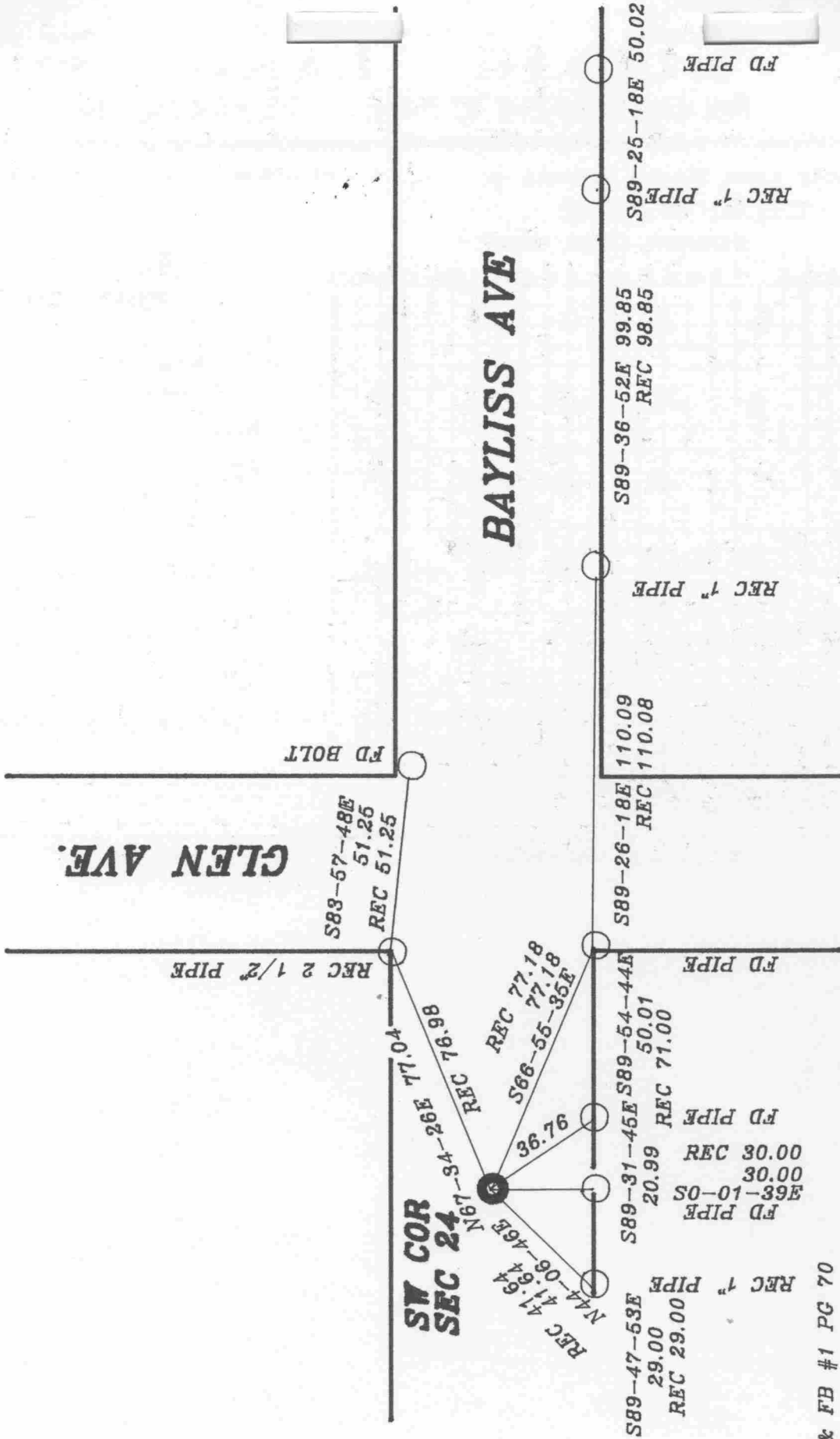
EMBOSS LAND SURVEYOR SEAL

R21 (1)



2/4/98
Donald Barnes

EMBOSSSED SEAL



OBSERVATION SHEET #355, R-21, & FB #1 PG 70

NEWFIELD'S ADD. BK 12 PG 35

R-21 (1)