

U.S. PUBLIC LAND SURVEY MONUMENT RECORD

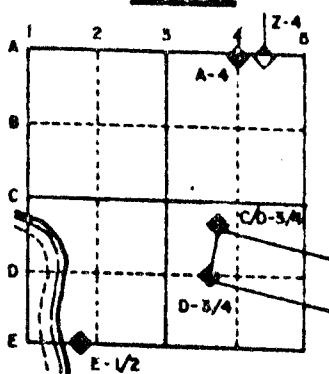
For Public Land Survey Corners in the
T. 1 N., R. 12 E.

CORNER CODE INDEX

	1	2	3	4	5	6	7	8	9	10	11	12	13	14	15	16	17	18	19	20	21	22	23	24	25
A																									
B																									
C	6																								
D		5																							
E			4																						
F				3																					
G					2																				
H																									
I																									
J	7																								
K		8																							
L			9																						
M				10																					
N					11																				
O						12																			
P							13																		
Q								14																	
R									15																
S										16															
T											17														
U												18													
V													19												
W														20											
X															21										
Y																22									
Z																	23								
																		24							
																			25						
																				26					
																					27				
																						28			
																							29		
																								30	
																									31
																									32
																									33
																									34
																									35
																									36

PLACE MONUMENT SYMBOL (◆) AT PROPER
LOCATION ON ABOVE INDEX

EXAMPLE



BELOIT TWP
ROCK COUNTY WI

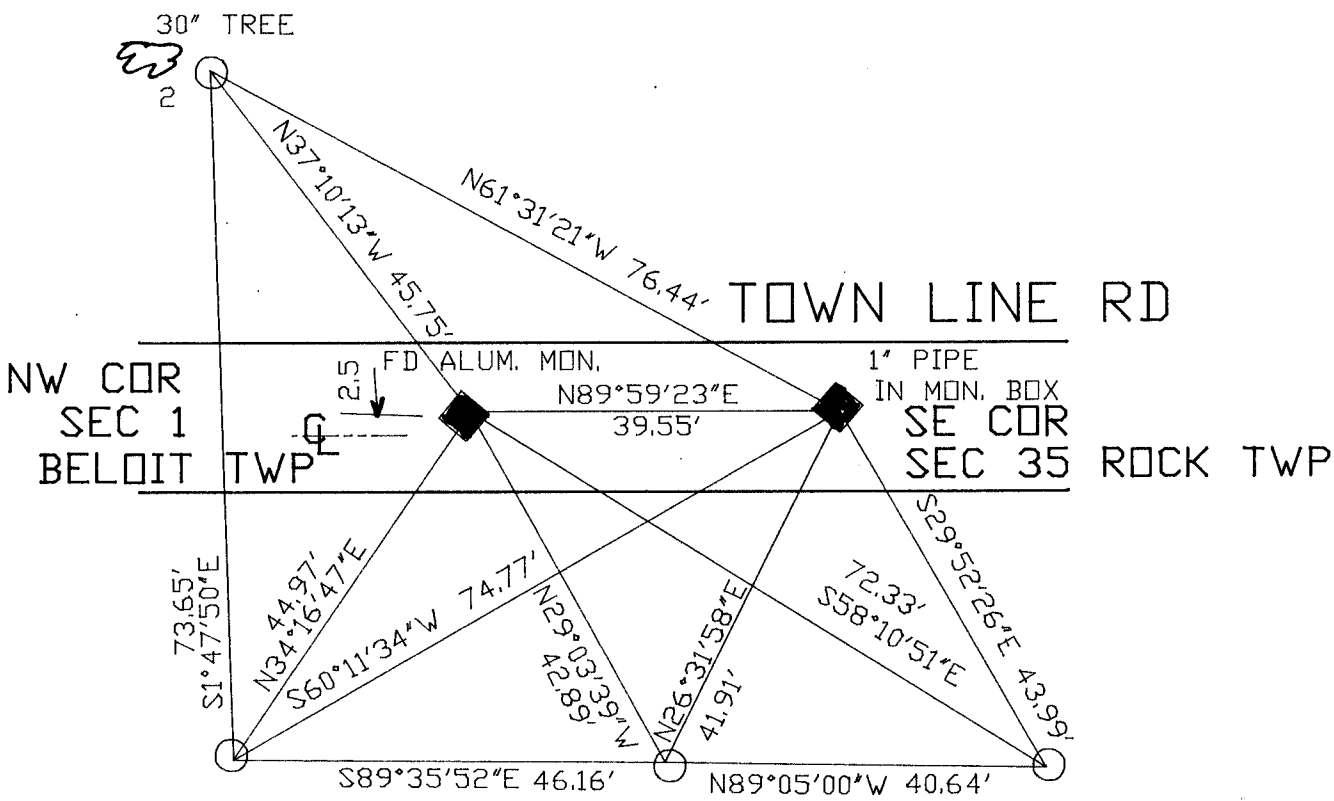
IF AVAILABLE
STATE PLANE COORDINATES

North (Y) _____ Eleve. (Z) _____
 East (X) _____ Zone _____
 Hor. Datum _____ Vert. Datum _____

◆ CORNER MONUMENT

○ WITNESS MONUMENT

BEARINGS ARE BASED ON: ASSUMED



FIELD BOOK #3 PG 27

○ 3/4X24 REROD
ORANGE PLASTIC CAP

SHEET 2 OF 2

CORNER CODE: A 21

(B) Describe any record evidence, monument evidence, occupational evidence, testimonial evidence or any other material evidence you considered, and whether the monument was found or placed.

1834 HARRISON ORIGINAL GOVERNMENT NOTES. INTERSECTED NORTH BOUNDARY 39.6 WEST OF POST. SET POST & MOUND.

1860 RUGER VOL 1 PG 129 SHOWS THE FOLLOWING:
2623.83 TO N 1/4 CORNER OF SECTION 2
3008.28 TO E 1/4 CORNER OF SECTION 2
EAST 39.60 TO SE CORNER OF SECTION 35

ALSO SHOWS THAT THE N 1/4 CORNER OF SECTION 2 IS ON LINE WITH THE NW AND NE CORNERS OF SECTION 2.

195? BATTERMAN JR. VOL 3 PG 527 SHIMEAL PLACED 1" PIPE.

1965 BATTERMAN JR. VOL 4 PG 170 FOUND PIPE. PLACED MONUMENT BOX & REFERENCED SAME. SHOWS R/R SPIKE ABOUT 1.2 SOUTH OF PIPE.

1965 DOT VOL 6 PG 329 MONUMENT BOX. 1" PIPE DRIVEN IN BOX BY BATTERMAN ENGINEERS. NOTE: ALL MEASUREMENTS FROM WITNESS MONUMENTS TO LAND MARK WERE TAKEN TO ORIGINAL PIN, LOCATED IN OLD PAVEMENT, PRIOR TO GRADING OPERATIONS ON OR ABOUT APRIL 21, 1965.

1979 BARNES VOL 5 PG 576 FOUND MONUMENT BOX AS REFERENCED VOL 4 PG 170. SHOWS WEST OF SE CORNER OF SECTION 35 WITH FOLLOWING DISTANCES:

ORIGINAL 39.6
RUGER 39.6
BATTERMAN 169.59

1980 BARNES VOL 6 PG 15. THE MONUMENT BOX NEAR THE NE CORNER OF SECTION 2 IS NOT THE CORNER. A PROPERTY CORNER WAS ERRONEOUSLY MONUMENTED AS THE SECTION CORNER.

1986 BARNES VOL 6 PG 335 SHOWS 2585.71 TO N 1/4 CORNER SECTION 1, AND SAME JOGS AS IN VOL 5 PG 576. ALSO SHOWS 2638.43 BETWEEN N 1/4 CORNER OF SECTION 1 AND NORTH EAST CORNER OF SECTION 1.

1989 BARNES VOL 6 PG 397 SAME INFORMATION AS IN VOL 6 P 335.

FOUND A PIPE IN A MONUMENT BOX AND AN ALUMINUM MONUMENT.

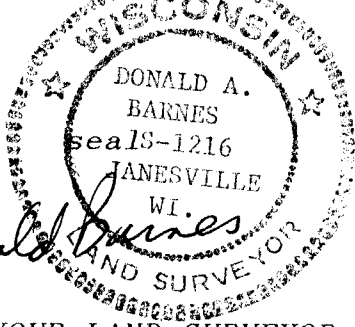
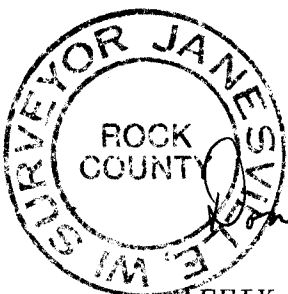
C) Was the corner restored through acceptance of (1) an obliterated evidence location, or, (2) a found perpetuated location?

ACCEPTED THE ALUMINUM MONUMENT.

D) Describe any material discrepancy between the location of the corner as restored or reestablished and the location of that corner as previously restored or reestablished by distance and direction. Show the discrepancy on the plan view drawing under (a), above. Show the distances between the corner as previously restored or reestablished and (1) the corner as restored or reestablished, and (2) to at least 4 of the witness monuments shown on the drawing in (a), above.

THERE IS A DISCREPANCY. THE MAP SHOWS THE ERRONEOUS MONUMENT AS MONUMENTED BY THE MONUMENT BOX. THE CORRECT CORNER IS THE ALUMINUM MONUMENT.

I, Donald Barnes, hereby certify that the corner points as identified by the corner code index were, in a field survey on, August 20, 1990, established, re-established, monumented, re-monumented, recovered or restored as expressed below and in conformance with the regulations and rules as required in the current manual of survey instructions of the United States Department of Interior, Bureau of Land Management.



COUNTY SURVEYOR FILING DATA

Date of computer entry _____

Date microfilmed _____

Number of included sheets _____

CORNER CODE

AFFIX YOUR LAND SURVEYOR SEAL