

U.S. PUBLIC LAND SURVEY MONUMENT RECORD

For Public Land Survey Corners In:
T. 4 N. R. 12 E. 4th P.M.
CORNER CODE INDEX

WI ADMINISTRATIVE CODE A-E 7.08 REQUIREMENT
REV 10/23/2004 USMONREC.DWG

	1	2	3	4	5	6	7	8	9	10	11	12	13	14	15	16	17	18	19	20	21	22	23	24	25
A																									
B																									
C	6																								
D																									
E																									
F																									
G	7	8																							
H																									
J																									
K	18	17																							
L																									
M																									
N																									
O																									
P	19	20																							
Q																									
R																									
S																									
T	30	29																							
U																									
V																									
W																									
X	31	32																							
Y																									
Z																									
	1	2	3	4	5	6	7	8	9	10	11	12	13	14	15	16	17	18	19	20	21	22	23	24	25

PLACE MONUMENT SYMBOL \blacklozenge AT PROPER LOCATION ON ABOVE INDEX

FULTON TWP

ROCK COUNTY WI

IF AVAILABLE
ROCK COUNTY COORDINATES PREFERRED

North _____ Elev. _____

East _____

Hor. Datum _____ Vert. Datum _____

LATITUDE _____ ELLIPS. HT. _____

LONGITUDE _____

NAD83(91) _____ NETWORK ADJ. YR _____

GPS (X) _____ TRAVERSE (X) _____

BASED ON THE FOLLOWING CONTROL:

306 15:57 608-267-1540

DANE CO PLANNING DEV

PAGE 04/04

GOVERNMENT CORNER REFERENCE

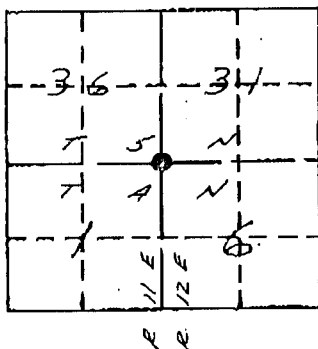
Dane County, Wisconsin
ROCK COUNTY

Government corner 36 | 31

Township A E 5 North
Range 12 E East

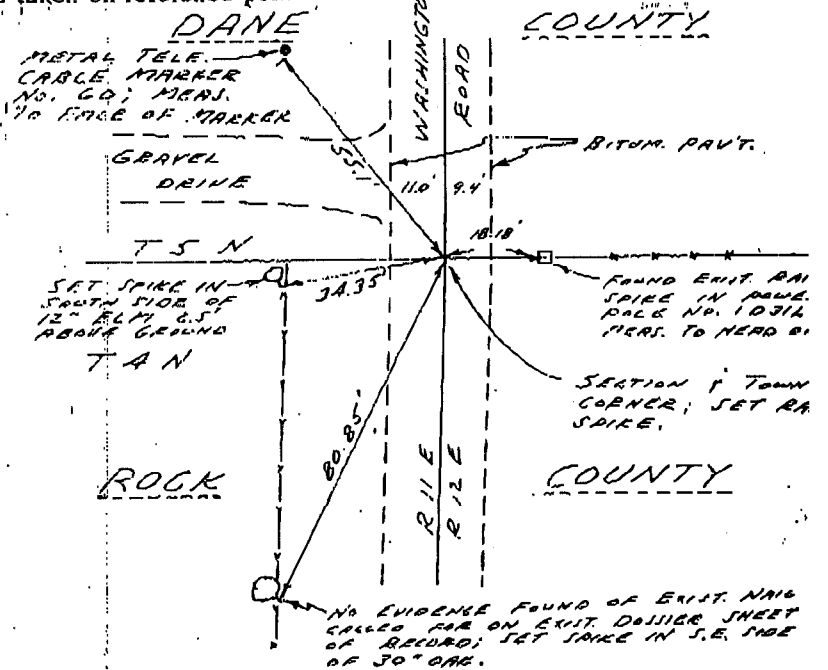
Date of survey 9/27/76

Fieldbook FILE NO. AB 345-25
RBEK SURVEY LTD.
CAMBRIDGE, WI.



LOCATION SKETCH

This space for drawing of corner showing type of Monument set, distance and direction of reference monument, a note if distances are not measured on a horizontal plane, and where measurement is taken on reference point.



SCALE: 1" =

SURVEYORS AFFIDAVIT (Surveyor must certify the method by which the above described corner STATE OF WISCONSIN } has been located or relocated.)
COUNTY OF DANE } ss

I hereby certify that I located the above corner from a derrick sheet in the DANE County Surveyors Office; and that I set a railroad spike and made new ties; the above sketch is an accurate representation of the measurements made.

G. L. Matthews 10/6/76
Registered Land Surveyor - Number S 922

SHOW ALL PLANS, VIEWS, DRAWINGS, INCLUDING THE CORNER MONUMENT AND SURROUNDING PHYSICAL FEATURES, INCLUDING THE EXCAVATION AREA AND DEPTH.

PLANNING & ZONING COMMITTEE ADOPTED THIS FORM ON 12/2/1982

CORNER CODE A-1(1)

CORNER NUMBER 1-1