

Paper weight-110# (minimum)

Black nonfading ink required

# U.S. PUBLIC LAND SURVEY MONUMENT RECORD

For Public Land Survey Corners In:

WI ADMINISTRATIVE CODE A-E 7.08 REQUIREMENT

T. 4 N. R. 13 E. 4th P.M.

REV 10/23/2004

USMONREC.DWG

CORNER CODE INDEX

A	1	2	3	4	5	6	7	8	9	10	11	12	13	14	15	16	17	18	19	20	21	22	23	24	25	A	
B																											B
C																											C
D																											D
E																											E
F																											F
G																											G
H																											H
J																											J
K																											K
L																											L
M																											M
N																											N
O																											O
P																											P
Q																											Q
R																											R
S																											S
T																											T
U																											U
V																											V
W																											W
X																											X
Y																											Y
Z																											Z

MILTON TWP

ROCK COUNTY WI

IF AVAILABLE  
ROCK COUNTY COORDINATES PREFERRED

North \_\_\_\_\_ Elev. \_\_\_\_\_

East \_\_\_\_\_

Hor. Datum \_\_\_\_\_ Vert. Datum \_\_\_\_\_

LATITUDE \_\_\_\_\_ ELLIPS. HT. \_\_\_\_\_

LONGITUDE \_\_\_\_\_

NAD83(91) \_\_\_\_\_ NETWORK ADJ. YR \_\_\_\_\_

GPS (X) \_\_\_\_\_ TRAVERSE (X) \_\_\_\_\_

BASED ON THE FOLLOWING CONTROL:  
\_\_\_\_\_

PLACE MONUMENT SYMBOL  AT PROPER LOCATION ON ABOVE INDEX

CORNER MONUMENT

WITNESS MONUMENT

(a)

BEARINGS ARE BASED ON: \_\_\_\_\_

FIELD BOOK \_\_\_\_\_ PAGE # \_\_\_\_\_

SHEET 1 OF 3

SHOW A PLAN VIEW DRAWING DEPICTING THE CORNER MONUMENT AND SURROUNDING PHYSICAL FEATURES, INCLUDING THE EXCAVATION AREA AND DEPTH.

PLANNING & ZONING COMMITTEE ADOPTED THIS FORM ON 12/2/1982

CORNER CODE L-1(1)

MI554

(B) Describe any record evidence, monument evidence, occupational evidence, testimonial evidence or any other material evidence you considered, and whether the monument was found or placed.

- 1836 BRINK NORTH ON EAST SIDE SECTION 13 T4N 12E TH  
MERIDIAN  
2640 SET QUARTER SECTION POST BUR OAK 10 S89W  
29.04'  
4270.2 BLACK OAK 16 IN DIAMETER  
5280 SET POST CORNER SECTIONS 12 & 13 WHITE OAK  
20 S46W 50.16' BUR OAK 11 N16W 48.18' LAND &  
SAME
- 1862 MILTON TWP RD BK1 PG 6 """" WHEREOF AN ACCURATE  
SURVEY HAS BEEN MADE WHICH IS AS FOLLOWS TO WIT:  
BEGINNING IN THE CENTER OF THE TOWN LINE ROAD  
BETWEEN MILTON AND FULTON AT THE PLACE WHERE THE  
FULTON AND INDIAN FORD ROAD MAKES JUNCTION WITH THE  
SAID TOWN LINE ROAD AND AT THE STAKE S7-15E AND  
1094.94' FROM A STAKE IN THE NORTH WEST COR OF THE SW  
¼ OF SEC 18 IN THE TOWN OF MILTON AND THENCE RUNNING  
N84-15E AND 537.24 TO A STAKE IN THE CENTER OF THE  
OLD TERRITORIAL ROAD. THE LINE OF SAID SURVEY TO BE  
THE CENTER OF SAID HIGHWAY; AND THE SAME IS  
ESTABLISHED 66' WIDTH.
- 1871 (AUG23) RUGER MILTON TWP REMON. NORTH ON WEST LINE  
OF SW ¼ OF SEC 18 ON A VAR 6-20 AT  
2650.56 INTERSECTED ¼ LINE 6.60' WEST OF ¼ COR. FOUND  
OLD STAKE AT COR. ALSO FOUND STUMP OF S.W  
BEARING TREE & WHERE STUMP OF N.W. BEARING  
TREE HAD BEEN DUG UP. COR VAR 6-11
- 1871 (SEP8) RUGER MILTON TWP REMON. NORTH ON WEST LINE OF  
NW ¼ OF SEC 18 ON A VAR 6-05 OFFSET WEST  
19.80' OFFSET EAST 19.8' AT  
2609.64 INTERSECTED NORTH BOUNDARY LINE 3.30' EAST  
OF COR. COR VAR 6-09  
PLACED 6"X6" CUT LIMESTONE
- 1949 SUNNY #1198 FD 6"X6" CUT STONE MON. N2-41W 588.9 OF  
1" PIPE @ INT. CENTER OF PVMT FOR MILTON/NEWVILLE RD &  
N/S ROD. MAGNETIC MERIDIAN [1-9-49] ANGLE OF 89-22-X @  
E ¼ COR SEC 13 FROM EAST LINE OF SE ¼ TO E/W ¼ LINE OF  
SEC 13.
- 1949 SUNNY VOL 3 PG 471 FD 6"X6"X42" STONE MON. S86-41W  
441.2 TO 1"X24" PIPE FLUSH WITH CENTER OF BLACKTOP RD,  
S2-41E 588.9 TO 1"X24" PIPE AT CENTER OF INT. OF  
NEWVILLE RD & PINE RD, 178.2' SOUTHWESTERLY TO NE COR  
OF 2 STORY FRAME GARAGE.
- 1950 SUNNY #1197 CALLS FOR COR BUT STATES NOTHING  
ABOUT IT. N86-41E (MAGNETIC MERIDIAN 1-9-49) 441.2 EAST  
OF CENTER OF PVMT
- 1952 SUNNY #1197 FD IRON PIPE
- 1963 BATTERMAN VOL 4 PG 161 FD 6"X6" CUT STONE. WITH TOP  
BROKEN OFF. REF SAME. ON LINE E/W FENCE ON EAST &  
WEST SIDE OF RD.
- 1974 HELD #1205 PK PLACED USING TIES FURNISHED BY ROCK  
COUNTY. 5361.94 TO W ¼ COR SEC 13, 2677.20 TO CEN SEC  
13, ANGLE 88-28-34 @ W ¼ COR SEC 13 FROM NW COR SEC  
13 TO E ¼ COR SEC 13
- 1974 LEE VOL 4 PG 161 PER TELEPHONE CALL FROM W.D.  
KIENBAUM. REFERENCE & TELEPHONE POLE BY IT ARE GONE  
& IS NOW PLOWED FIELD (UNDERGROUND TELEPHONE)  
STONE IS 6" DEEP & 1 ½" IP ON EACH SIDE (ORIGIN  
UNKNOWN).
- 1974 SCHROEDER GSM VOL 4 PG 224 STATES NOTHING ABOUT  
MON.
- 1975 COMBS GSM VOL 5 PG 101 STATES NOTHING ABOUT MON.  
589.2' NORTHERLY OF CENTER OF NEWVILLE RD.
- 1975 NORTHROP #1202 FD 1 ½" PIPE

Donald Barnes

OCT 16, 2007

MI554

1976 COMBS #12884 CALLS FOR COR BUT STATES NOTHING ABOUT IT.  
1978 SCHROEDER CSM 7-308 STATES NOTHING ABOUT MON.  
1978 SCHROEDER #02956 STATES NOTHING ABOUT MON.  
1979 WOODMAN CSM VOL9 PG 53 FD STONE 2611.57 TO NE COR SEC 13.  
1983 BARNES L1 MILTON TWP SET 6" BERNTSEN OVER CUT L.S. (6 " DEEP) & REF. 4' EAST CENTER OF NEWVILLE RD.  
1983 BARNES REMON #6794 NO-05-28E 2611.64 TO NE COR SEC 13, SO-16-45W 2653.07 TO SE COR SEC 13  
1989 SCHROEDER #12408 CALLS FOR SEC COR BUT STATES NOTHING ABOUT TYPE OF MON. ANGLE OF 91-37-40 @ SE COR SEC 13 FROM S 1/4 TO E 1/4 CORNERS SEC 13.  
1989 COMBS #564 FD IRON PIN.  
1991 SCHROEDER CSM 15-257 STATES NOTHING ABOUT MON.  
1992 SCHROEDER #11645 CALLS FOR COR BUT STATES NOTHING ABOUT IT. 588.9 NORTH OF INT CENTER PVMT OF NEWVILLE RD & N. FARM HOUSE RD. ANGLE OF 89-22-XX AT E 1/4 COR FROM EAST LINE OF SE 1/4 SEC 13 TO E/W 1/4 LINE OF SEC 13  
1996 COMBS CSM 19-266 ALUM. MON.  
1998 COMBS CSM VOL 21 PG 311 ALUM. 2653.06 TO SE COR SEC 13 & ANGLE 89-21-40 FROM SE COR SEC 13 ALONG E/W 1/4 LINE OF SEC 13.  
1999 KREBS #7355 FD PK 2653.11 TO SE COR SEC 13

FD PK & 0.25' DEEP FD ALUM. MON.

C) Was the corner restored through acceptance of (1) an obliterated evidence location, or, (2) a found perpetuated location?

ACCEPTED FD ALUM. MON. IT PERPETUATES THE FD CUT LIMESTONE.

D) Describe any material discrepancy between the location of the corner as restored or reestablished and the location of that corner as previously restored or reestablished by distance and direction. Show the discrepancy on the plan view drawing under (a), above. Show the distances between the corner as previously restored or reestablished and (1) the corner as restored or reestablished, and (2) to at least 4 of the witness monuments shown on the drawing in (a), above.

THE FD PK ISN'T IN THE SAME LOCATION AS THE ALUM. MON. NOR IS IT IN HARMONY WITH THE TIES. THE FIRST RECORD OF A PK IS IN 1999 WHEN KREBS REPORTED FINDING A PK.

(E) Was the corner reestablished through lost corner proportionate methods? If so, show the method, including the directions and distances to other public land survey corners used as evidence or used for proportioning the corner location.

NO

I, Donald Barnes, hereby certify that the corner location as identified by the corner code index was determined by me under my direction and control and that this U.S. Public Land Survey Monument Record is correct and complete to the best of my knowledge and belief.

Seal  
Donald  
Barnes  
E110555

Oct 16, 2007

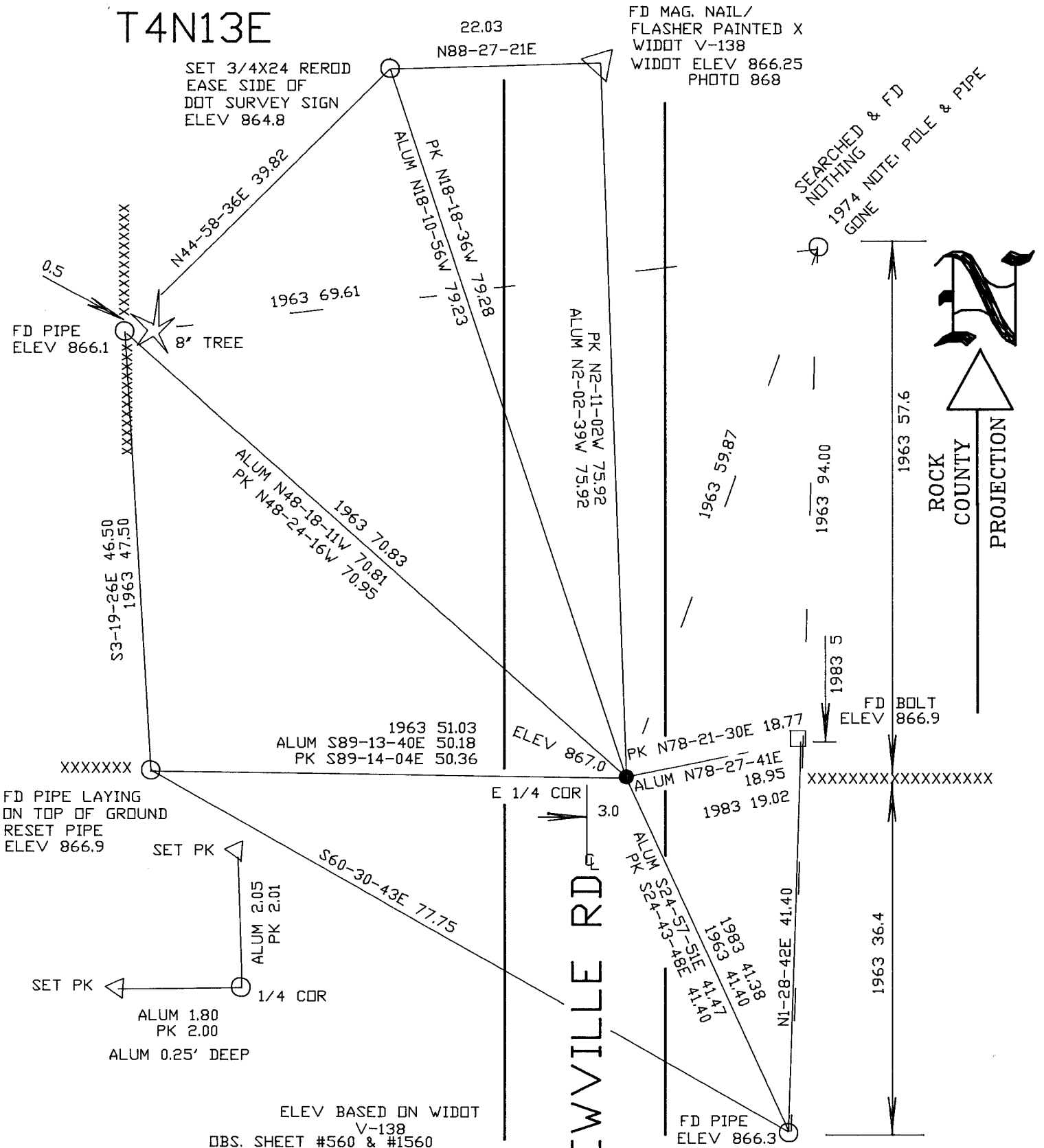
SHEET 2 OF 3

CORNER CODE L-1(1)

A.E. 7.08 REQUIREMENT

W 1/4 COR  
 SEC 18  
 MILTON TWP  
 T4N13E

NOT TO SCALE



ELEV BASED ON WIDOT  
 V-138  
 OBS. SHEET #560 & #1560

EMBOSSED SEAL  
*Donald Barnes*

Oct 16, 2007