

U.S. PUBLIC LAND SURVEY MONUMENT RECORD

For Public Land Survey Corners in the

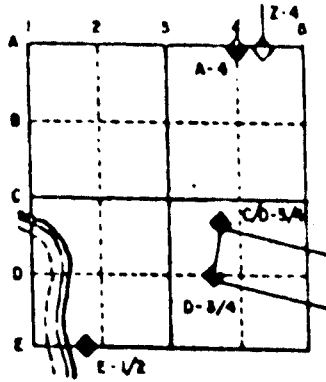
T. 1N., R. 13E.

CORNER CODE INDEX

	1	2	3	4	5	6	7	8	9	10	11	12	13	14	15	16	17	18	19	20	21	22	23	24	25
A																									
B																									
C	8																								
D		5																							
E																									
F																									
G																									
H	7																								
I		8																							
J																									
K																									
L																									
M																									
N																									
O																									
P	9																								
Q		20																							
R																									
S																									
T	30																								
U		29																							
V																									
W																									
X																									
Y																									
Z																									

PLACE MONUMENT SYMBOL (●) AT PROPER LOCATION ON ABOVE INDEX

EXAMPLE



TURTLE TWP
ROCK COUNTY WI

IF AVAILABLE
STATE PLANE COORDINATES

North (Y) _____ Eleve. (Z) _____
 East (X) _____ Zone _____
 Hor. Datum _____ Vert. Datum _____

◆ CORNER MONUMENT
ALUM

○ WITNESS MONUMENT

BEARINGS ARE BASED ON:

(B) Describe any record evidence, monument evidence, occupational evidence, testimonial evidence or any other material evidence you considered, and whether the monument was found or placed.

1959 BATTERMAN VOL 4 PG 28 SET 1" PIPE BY SINGLE PROPORTIONATE MEASUREMENT. 2646.65 TO W 1/4 COR SEC 18 & 2646.65 TO E 1/4 COR SEC 12.

1972 LEE VOL 4 PG 552. 2542.00 TO S 1/4 COR SEC 7.

1980 BARNES VOL 6 PG 80 FOUND 1" PIPE 1' DEEP. DROVE DEEP SET ALUM. ON TOP 1' DEEP. 6' EAST OF N/S FENCE.

1980 BARNES VOL 6 PG 81 2541.33 TO N 1/4 COR SEC 18 & 2646.75 TO W 1/4 COR SEC 18.

FOUND ALUM MON.

C) Was the corner restored through acceptance of (1) an obliterated evidence location, or, (2) a found perpetuated location?
ACCEPTED FOUND PERPETUATED LOCATION.

D) Describe any material discrepancy between the location of the corner as restored or reestablished and the location of that corner as previously restored or reestablished by distance and direction. Show the discrepancy on the plan view drawing under (a), above. Show the distances between the corner as previously restored or reestablished and (1) the corner as restored or reestablished, and (2) to at least 4 of the witness monuments shown on the drawing in (a), above.

(E) Was the corner reestablished through lost corner proportionate methods? If so, show the method, including the directions and distances to other public land survey corners used as evidence or used for proportioning the corner location.

NO

I, Donald Barnes, hereby certify that the corner points as identified by the corner code index were, in a field survey on, 1994, established, re-established, monumented, re-monumented, recovered or restored as expressed below and in conformance with the regulations and rules as required in the current manual of survey instructions of the United States Department of Interior, Bureau of Land Management.

seal

Donald Barnes
OCT 6, 1995

COUNTY SURVEYOR FILING DATA

Date of computer entry _____

Date microfilmed _____

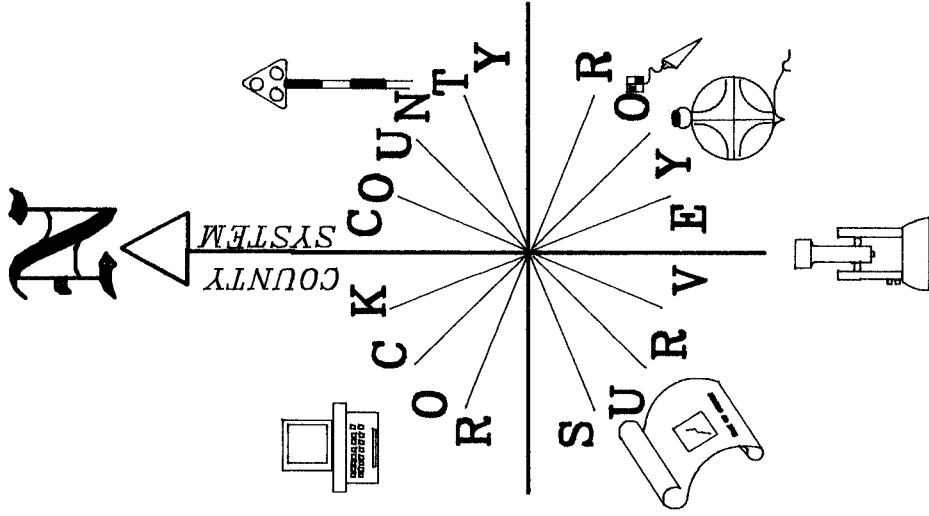
Number of included sheets _____

CORNER CODE

EMBOSS LAND SURVEYOR SEAL

A-E 7.08 REQUIREMENT

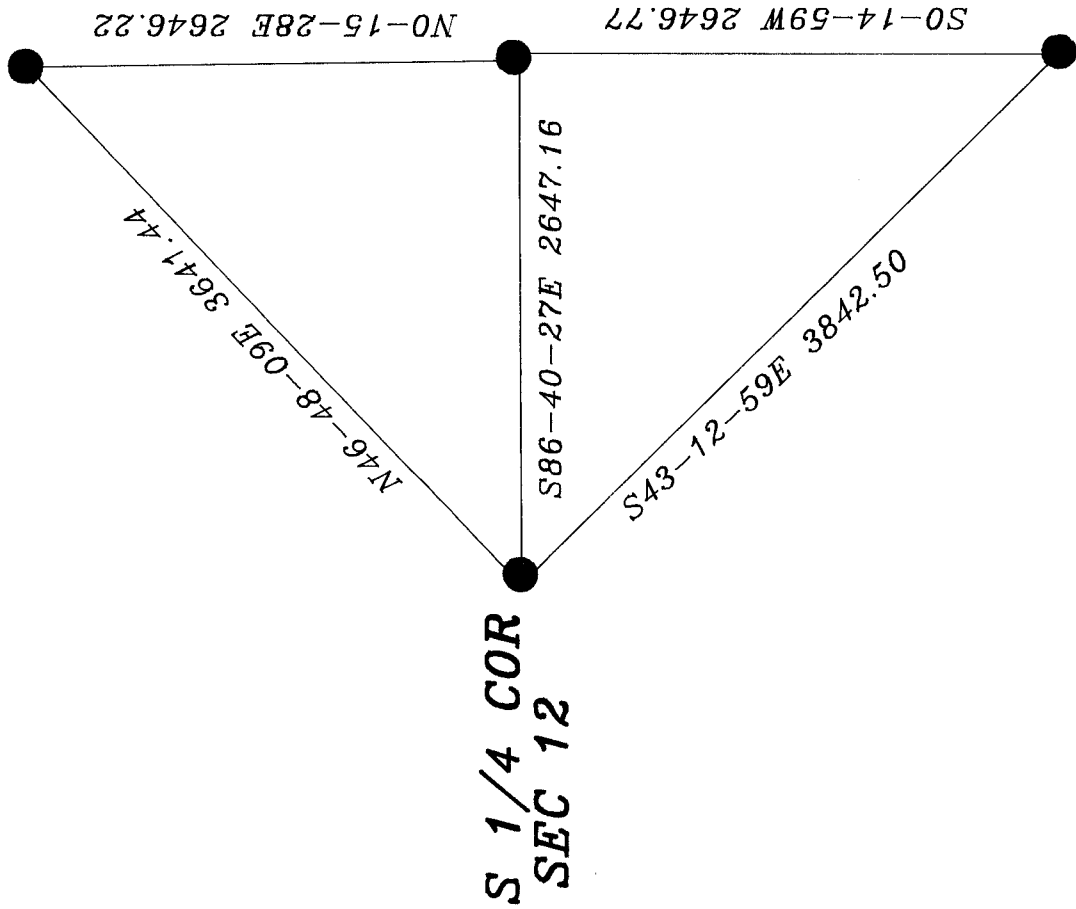
J25



**E 1/4 COR
SEC 12**

**SE COR
SEC 12**
FD ALUM
MON.

**E 1/4 COR
SEC 13**



Donald Barnes
Oct 9, 1995