

PUBLIC LAND SURVEY MONUMENT RECORD

For Public Land Survey Corners in the

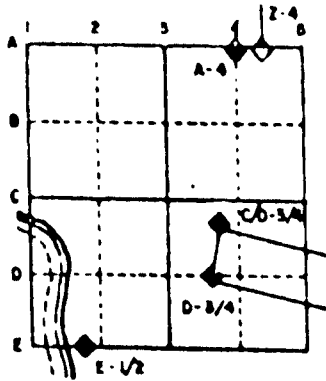
T. 1 N., R. 13 E

CORNER CODE INDEX

	1	2	3	4	5	6	7	8	9	10	11	12	13	14	15	16	17	18	19	20	21	22	23	24	25
A																									
B																									
C																									
D																									
E																									
F																									
G																									
H																									
I																									
J																									
K																									
L																									
M																									
N																									
O																									
P																									
Q																									
R																									
S																									
T																									
U																									
V																									
W																									
X																									
Y																									
Z																									

PLACE MONUMENT SYMBOL (◆) AT PROPER LOCATION ON ABOVE INDEX

EXAMPLE



TURTLE TWP
ROCK COUNTY WI

IF AVAILABLE
STATE PLANE COORDINATES

North (Y) 211,475.28 Elev. (Z) _____

East (X) 509,311.20 Zone _____

Hor. Datum COUNTY Vert. Datum _____

◆ CORNER MONUMENT

○ WITNESS MONUMENT

BEARINGS ARE BASED ON:

SHEET 1 OF 2
R11

CORNER CODE:

TU586

(B) Describe any record evidence, monument evidence, occupational evidence, testimonial evidence or any other material evidence you considered, and whether the monument was found or placed.

1920 BATTERMAN VOL 3 PG 96 SET HH CROSS NOTCH TOP OF SURFACE, 1HH ON N & 2 HH ON SOUTH. FOUND NBT & ROOTS OF SBT. SET GP ON N/S 1/4 LINE OF SECTION 28 BUT STATED NO DISTANCE.

1988 COMBS MAP #12334&12347 STATES NOTHING ABOUT MONUMENT. SHOWS AN ANGLE OF 178-51-40 AT THE N 1/4 COR SEC 28 FROM THE N 1/4 COR SEC 21 TO THE S 1/4 COR OF SEC 28.

FOUND DISK IN CONCRETE. PLACED CARSONITE 1.5' EAST OF MONUMENT.

C) Was the corner restored through acceptance of (1) an obliterated evidence location, or, (2) a found perpetuated location?

ACCEPTED FOUND MONUMENT.

D) Describe any material discrepancy between the location of the corner as restored or reestablished and the location of that corner as previously restored or reestablished by distance and direction. Show the discrepancy on the plan view drawing under (a), above. Show the distances between the corner as previously restored or reestablished and (1) the corner as restored or reestablished, and (2) to at least 4 of the witness monuments shown on the drawing in (a), above.

(E) Was the corner reestablished through lost corner proportionate methods? If so, show the method, including the directions and distances to other public land survey corners used as evidence or used for proportioning the corner location.

NO

I, Donald Barnes, hereby certify that the corner points as identified by the corner code index were, in a field survey on 1994, established, re-established, monumented, re-monumented, recovered or restored as expressed below and in conformance with the regulations and rules as required in the current manual of survey instructions of the United States Department of Interior, Bureau of Land Management.

seal

Donald Barnes
7/14/95

COUNTY SURVEYOR FILING DATA

Date of computer entry _____

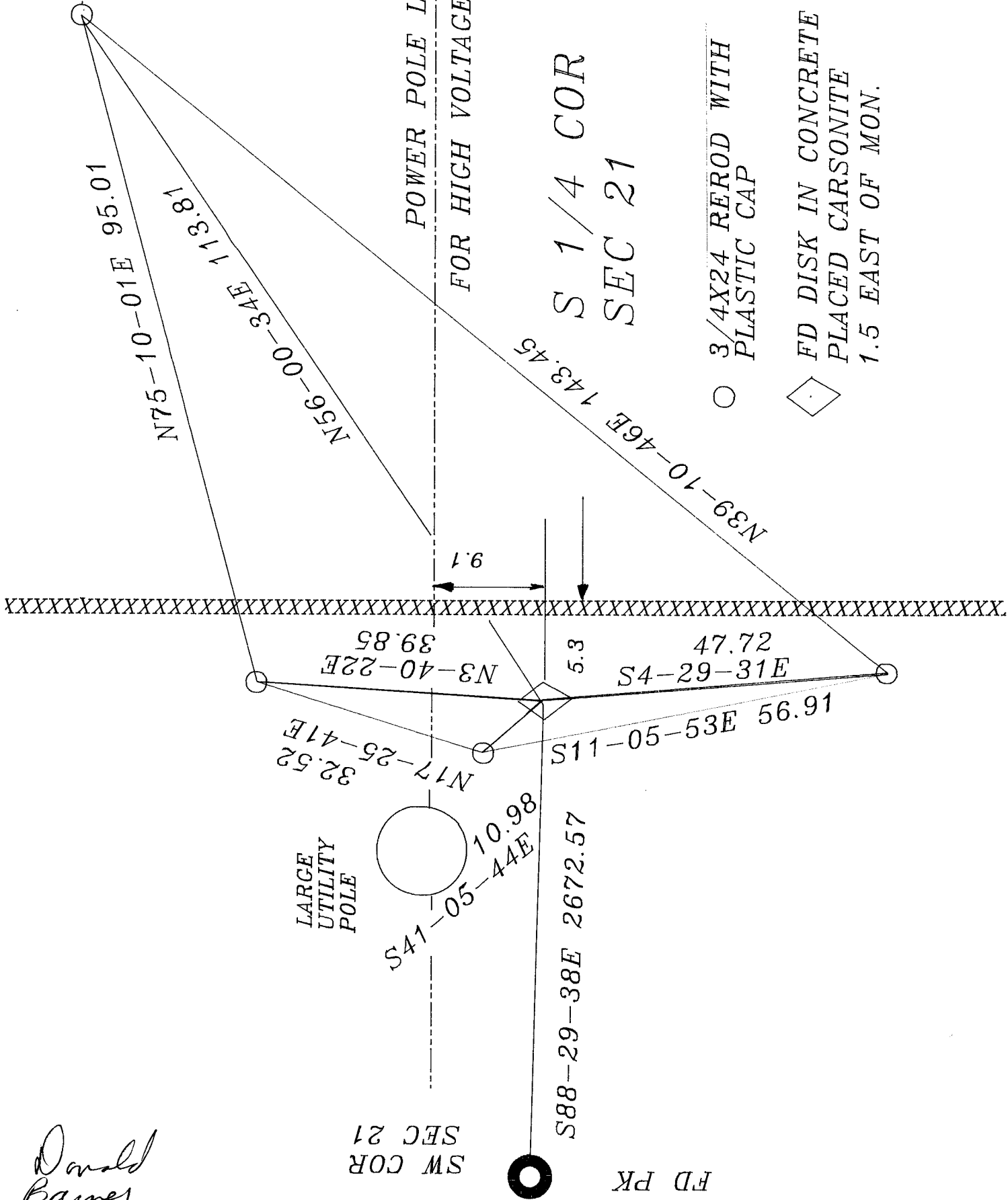
Date microfilmed _____

Number of included sheets _____
CORNER CODE

AFFIX YOUR LAND SURVEYOR SEAL

R11

Donald Barnes
May 10, 1995



SW COR
SEC 21

FD PK

R //

N75-10-01E 95.01

N56-00-34E 113.81

N56-00-34E 113.81

N17-25-41E 32.52

N3-40-22E 39.85

S41-05-14S 10.98

S88-29-38E 2672.57

E18-62-4S 27.77

N39-10-46E 143.45

POWER POLE LINE
FOR HIGH VOLTAGE LINE

S 1/4 COR
SEC 21

○ 3/4X24 REBOD WITH
PLASTIC CAP

◇ FD DISK IN CONCRETE
PLACED CARSONITE
1.5 EAST OF MON.

