

# PUBLIC LAND SURVEY MONUMENT RECORD

For Public Land Survey Corners in the

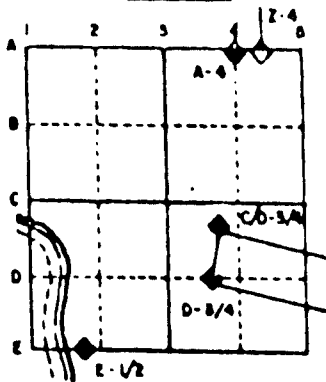
T. 1N., R. 13E.

## CORNER CODE INDEX

	1	2	3	4	5	6	7	8	9	10	11	12	13	14	15	16	17	18	19	20	21	22	23	24	25
A																									
B	6																								
C		5																							
D			4																						
E				3																					
F					2																				
G	7																								
H		8																							
I			9																						
J				10																					
K					11																				
L						12																			
M							13																		
N								14																	
O									15																
P										16															
Q											17														
R												18													
S													19												
T														20											
U															21										
V																22									
W																	23								
X																		24							
Y																			25						
Z																				26					
AA																					27				
AB																						28			
AC																							29		
AD																								30	
AE																									31
AF																									32
AG																									33
AH																									34
AI																									35
AJ																									36

PLACE MONUMENT SYMBOL (●) AT PROPER LOCATION ON ABOVE INDEX

### EXAMPLE



TURTLE TWP  
ROCK COUNTY WI

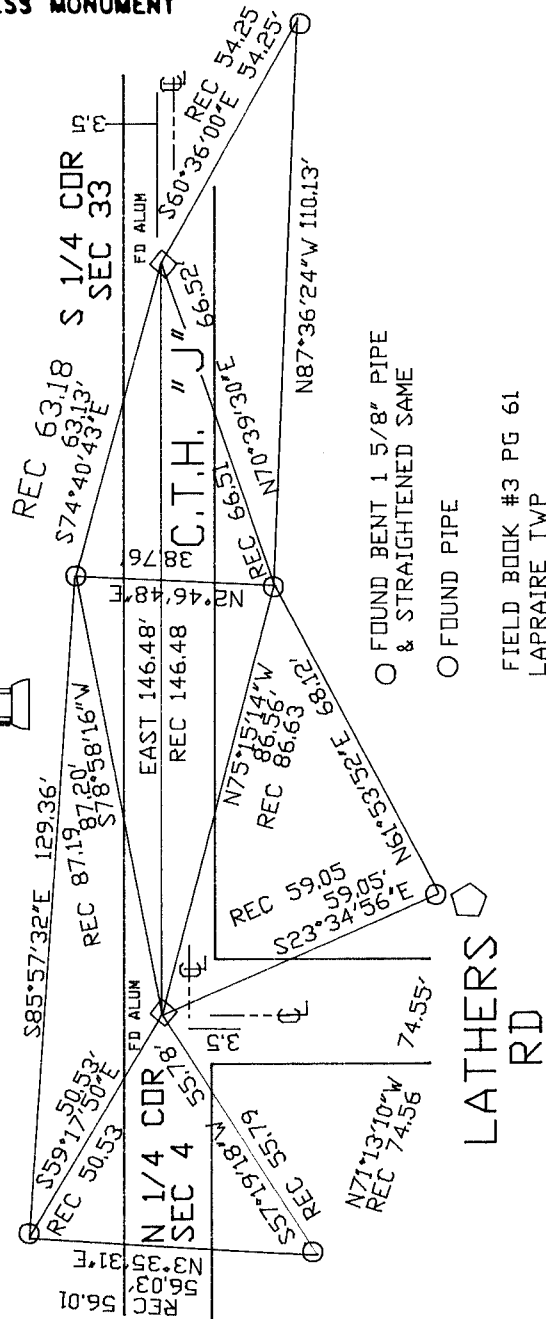
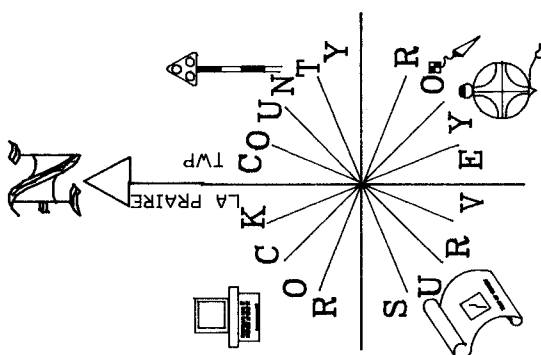
IF AVAILABLE  
STATE PLANE COORDINATES

North (Y) 233,010.27      Eleve. (Z) \_\_\_\_\_  
 East (X) 509,426.88      Zone \_\_\_\_\_  
 Hor. Datum COUNTY      Vert. Datum \_\_\_\_\_

◆ CORNER MONUMENT

○ WITNESS MONUMENT

BEARINGS ARE BASED ON:



FIELD BOOK #3 PG 61  
LAPRAIRE TWP

SHEET \_\_\_\_\_ OF \_\_\_\_\_

CORNER CODE:         

A 11

(B) Describe any record evidence, monument evidence, occupational evidence, testimonial evidence or any other material evidence you considered, and whether the monument was found or placed.

1939 SUNNY VOL 3 PG 451 DUG A HOLE 4X4 2 DEEP & FOUND NOTHING. CENTER HOLE IS 146.5 WEST OF S 1/4 COR SEC 31 & ON LINE WITH N/S CENTER OF PAVEMENT.

1964 BATTERMAN VOL 4 PG 203 STATES NOTHING ABOUT CORNER. REFERENCES CORNER.

1974 BATTERMAN VOL 4 PG 203 SET ALUM. MON.

1990 BARNES Z11 FOUND ALUM. MON. 146.48 WEST OF S 1/4 COR SEC 33. 3.5' NORTH OF CENTER OF E/W PAVEMENT & ON LINE CENTER OF N/S PAVEMENT.

FOUND ALUM. MON. N89-08-19W 2638.84 TO NW COR SEC 4 & S88-31-41E 2642.42 TO NE COR SEC 4.

C) Was the corner restored through acceptance of (1) an obliterated evidence location, or, (2) a found perpetuated location?  
ACCEPTED FOUND PERPETUATED LOCATION.

D) Describe any material discrepancy between the location of the corner as restored or reestablished and the location of that corner as previously restored or reestablished by distance and direction. Show the discrepancy on the plan view drawing under (a), above. Show the distances between the corner as previously restored or reestablished and (1) the corner as restored or reestablished, and (2) to at least 4 of the witness monuments shown on the drawing in (a), above.

(E) Was the corner reestablished through lost corner proportionate methods? If so, show the method, including the directions and distances to other public land survey corners used as evidence or used for proportioning the corner location.  
NO

I, Donald Barnes, hereby certify that the corner points as identified by the corner code index were, in a field survey on, 1994, established, re-established, monumented, re-monumented, recovered or restored as expressed below and in conformance with the regulations and rules as required in the current manual of survey instructions of the United States Department of Interior, Bureau of Land Management.

COUNTY SURVEYOR FILING DATA

Date of computer entry \_\_\_\_\_

Date microfilmed \_\_\_\_\_

Number of included sheets \_\_\_\_\_  
CORNER CODE

seal

*Donald Barnes*  
7/12/95

EMBOSS LAND SURVEYOR SEAL

A-E 7.08 REQUIREMENT

*All*