

U.S. PUBLIC LAND SURVEY MONUMENT RECORD

For Public Land Survey Corners in:

WI ADMINISTRATIVE CODE A-E 7.08 REQUIREMENT

T. 1 N., R. 11 E

CORNER CODE INDEX

A	1	2	3	4	5	6	7	8	9	10	11	12	13	14	15	16	17	18	19	20	21	22	23	24	25
B	6																								
C		5																							
D			4																						
E				3																					
F					2																				
G						1																			
H							8																		
I								9																	
J									10																
K										11															
L											12														
M												13													
N													14												
O														15											
P															16										
Q																17									
R																	18								
S																		19							
T																			20						
U																				21					
V																					22				
W																						23			
X																							24		
Y																								25	
Z																									26

NEWARK TWP

ROCK COUNTY WI

IF AVAILABLE
ROCK COUNTY COORDINATES PREFERRED

North _____ Elev. _____

East _____

Hor. Datum _____ Vert. Datum _____

LATITUDE _____ ELLIPS. HT. _____

LONGITUDE _____

GPS (X) _____ TRAVERSE (X) _____

BASED ON THE FOLLOWING CONTROL:

PLACE MONUMENT SYMBOL AT PROPER LOCATION ON ABOVE INDEX

CORNER MONUMENT

WITNESS MONUMENT

(a)

BEARINGS ARE BASED ON:

FIELD BOOK _____ PAGE # _____

SHEET 1 OF 6

SHOW A PLAN VIEW DRAWING DEPICTING THE CORNER MONUMENT AND SURROUNDING PHYSICAL FEATURES, INCLUDING THE EXCAVATION AREA AND DEPTH.

PLANNING & ZONING COMMITTEE ADOPTED THE ABOVE FORM ON 12/2/1982

CORNER CODE V-9(1)

NE605-SECORSEC29

(B) Describe any record evidence, monument evidence, occupational evidence, testimonial evidence or any other material evidence you considered, and whether the monument was found or placed.

1834 MILLER PG 31 EAST RANDOM BETWEEN SEC 29 & 32

5299.8 INTERSECT SEC LINE 5.94' NORTH POST LAND LEVEL 2ND RATE OAK & HICKORY TIMBER OAK & HAZEL USG.

WEST CORRECTED BETWEEN SEC 29 & 32

531.3 BUR OAK 20

2649.9 1/4 SEC POST BUR OAK 12 S10W 8.58'; BUR OAK 16 N43W 46.86'

3464.34 WHITE OAK 22 IN DIA

5045.7 BUR OAK 12 IN DIA

5299.8 SEC CORNER

PG 26 NORTH BETWEEN SEC 28 & 29

330 ENTER MARSH C E

990 LEAVE SAME

1227.6 BUR OAK 18 IN

2640 SET 1/4 SEC POST YELLOW 6 IN S2W 165'; BUR OAK 12 IN N4-30E 300.96'

4563.9 BUR OAK 14 IN DIAMETER

4940.1 YELLOW OAK 14 IN DIA

5280 SET POST COR SECS 20,21,28,29 YELLOW OAK 22 IN N87E 133.32'; BUR OAK 22 IN S65W 232.32' LAND 2ND RATE ROLLING SOIL SANDY TIMBER OAK & HICKORY OAK & HAZEL U.G. PRAIRIE GRASS RED ROOT

PG 25 NORTH BETWEEN SECS 32 & 33

1254 BUR OAK 12 IN DIAMETER

2640 SET 1/4 SEC POST BUR OAK 12 IN S1-30W 69.3'; WHITE OAK 22 IN N30E 56.76'

4798.2 BUR OAK 18 IN DIAMETER

5280 SET POST COR OF SEC 28,29,32,33 YELLOW OAK 12 S60W 57.42'; YELLOW OAK 12 N5E 178.86' LAND GENTLY ROLLING 2ND RATE TIMBER SCATTERING OAK & HICKORY SOIL SANDY

PG 25 EAST RANDOM BETWEEN 28 & 33

3960 ENTER MARSHY GROUND

5261.52 INTERSECT SEC LINE 2.64' NORTH POST. LAND MOSTLY LEVEL MARSHY TIMBER SCATTERING OAK & HAZEL U.G.

WEST MARKED BACK

2630.76 SET 1/4 SEC POST BUR OAK 12 N74E 54.12'; BUR OAK 12 S7W 17.16'

5261.52 SECTION CORNER

1871 COLLINS. REMONUMENTATION FIELD NOTES

PG 177 NORTH BETWEEN 28 & 29 VARIATION 7-15

2640 INTERSECT 1/4 LINE 11.22' WEST OF CORNER SET 1/4 STONE BY STUMP OF WITNESS TREE. CORRECTED VARIATION 7-30

CONTINUED NORTH VARIATION 6-45

5281.32 INTERSECT SECTION LINE 8.58' WEST OF CORNER. SET STONE FOR CORNER OF 20,21,28,29 IN PLACE OF GATE POST BY STUMP OF WITNESS TREE. CORRECTED VARIATION 6-57

PG 187 EAST BETWEEN 29 & 32 VARIATION 7-30

2686.2 INTERSECT 1/4 LINE 3.3' NORTH OF CORNER SET 1/4 STONE BY STUMPS OF WITNESS TREES CORRECTED VARIATION 7-34

CONTINUED EAST VARIATION 7-30

5350.62 SECTION CORNER

PG 176 EAST BETWEEN 28 & 33 VARIATION 3-30

2647.26 INTERSECT 1/4 LINE 5.28' SOUTH OF CORNER SET 1/4 STONE BY STUMP OF WITNESS TREE. CORRECTED VARIATION 3-23

CONTINUED EAST VARIATION 3-30

5269.44 SECTION CORNER

Donald Baines
May 27, 2004

SHEET 1 OF 6
V-9(1)

PG 175 NORTH BETWEEN 32 & 33 VARIATION 5
 2748.24 INTERSECT 1/4 LINE 11.22' WEST OF CORNER WEST OF
 CORNER SET 1/4 STONE BY STUMP OF WITNESS TREE.
 CORRECTED VARIATION 5-15

CONTINUED NORTH VARIATION 5-15

- 5507.04 INTERSECT SECTION LINE 28.38' WEST OF CORNER SET
 STONE FOR CORNER OF 28,29,32, & 33 BY WITNESS TREE
 & STUMP. CORRECTED VARIATION 5-52
- 1959 BATTERMAN VOL 4 PG 27 REFERENCED CORNER BUT STATES
 NOTHING ABOUT IT. SKETCH SHOWS 4' EAST OF EAST PVMT EDGE &
 ON LINE WITH CENTER E/W RD.
- 1959 EXCEPT THE FOLLOWING: REVISED 6-9-60. ALL REFERENCE
 CORNERS ARE 3/4" PINS-NOTE: REPLACED WITH 1" PIPE NEW
 DISTANCES OF 80.37 TO NE REFERENCE PIPE, 66.30 TO NW
 REFERENCE PIPE, 19.90 TO SE REFERENCE PIPE, 94.75 BETWEEN
 THE NE & NW REFERENCE PIPES, & 84.53 BETWEEN THE NW AND SE
 REFERENCE PIPES. STATES SW REFERENCE PIN IS GONE.
- 1960 BATTERMAN VOL 4 PG 27 *** BELOIT SET*** SAME AS VOL 4 PG 27
- 1964 BATTERMAN #04356 RESET NE. COR FROM COUNTY SURVEYORS
 RECORDS. ANGLE 87-05-30 FROM E 1/4 COR TO N 1/4 COR SEC 32.
 SET PIN 264.0 TO THE SOUTH & PK WESTERLY 379.5.
- 1973 LEE CSM 3 PG 251 2684.28 TO S 1/4 COR SEC 29. SET PIN.
 1342.20 TO FD BOLT @ S 1/16TH OF SE 1/4 SEC 29, & 1342.08 FROM
 FD BOLT @ S 1/16TH OF SE 1/4 SEC 29 TO S 1/4 COR SEC 29.
- 1973 LEE CSM VOL 3 PG 335 FD PIPE
- 1973 LEE #4262 ANGLE OF 90-24-08 @ E 1/4 COR SEC 29 FROM SE
 TO W 1/4 COR SEC 29 & 1318.38 FROM E 1/4 COR SEC 29
 SOUTH TO 1/16 TH COR
- 1974 LEE CSM VOL 4 PG 227 LEGEND SHOWS CI & WEST 330.00 TO NE
 PROPERTY CORNER. 165.00 FROM NE TO NW PROPERTY CORNER.
- 1976 NEE CSM VOL 6 PG 153 FD IP. SOUTH 445.00 TO NW PROPERTY
 COR. 305.00 FROM NW TO SW PROPERTY COR.
- 1979 THOM #03279 FD PIPE. S88-56-47W TO 1/16TH COR, S1-51-27W
 2755.62 TO E 1/4 COR SEC 32, S88-56-47W 495.00 TO SET PIN
 (PROPERTY COR), ANGLE 87-05-20 FROM E 1/4 COR SEC 32 TO @ N
 1/16TH COR OF NE 1/4 SEC 32, & ANGLE 91-51-23 @ E 1/4 COR SEC 32
 FROM S 1/16TH COR OF NE 1/4 SEC 32 TO NE COR SEC 32
- 1979 THOM #3260 2755.62 E 1/4 COR SEC 32 FD IP. ANGLE 87-05-20
 FROM EAST LINE SEC 32 TO SET IP @ N 1/16TH COR OF NE 1/4 SEC
 32, 1342.12 TO N 1/16TH COR OF NE 1/4 SEC 32, & SET IP S88-56-
 47W 495.00
- 1980 TOWNSEND CSM 10 PG 63 2683.95 TO S 1/4 COR SEC 29
- 1981 TOWNSEND CSM 10 PG 224 2755.62 TO E 1/4 COR SEC 32
- 1981 TOWNSEND #03266 S88-56-47W 1342.12 TO 1/16TH COR, S1-51-
 27W 2755.62 TO E 1/4 COR SEC 32, ANGLE 91-51-23 @ E 1/4 COR
 SEC 32 FROM S 1/16TH COR NE 1/4 SEC 32 TO NE COR SEC 32, & S1-
 51-27W 264.0 TO PROPERTY COR.
- 1989 COMBS #1389 FD 1" PIPE. 2636.76 TO E 1/4 COR SEC 29
- 1989 LEE #12372 1342.12 WEST TO 1/16TH COR, ANGLE 87-05-12 FROM
 EAST LINE SEC 32 TO 1/16TH COR.
- 1998 HOULE #8195 2684.16 TO N 1/4 COR SEC 32 FD IP. 1342.12 TO
 SET R/R @ N 1/16TH COR OF NE 1/4 SEC 32 & 1342.04 FROM S 1/16TH
 COR OF NE 1/4 SEC 32 TO N 1/4 COR SEC 32.
- 2001 BARNES V-1 FD 2" PIPE BY CARSONITE. EAST OF EAST EDGE OF
 PVMT BY SIGN. FD SPLIT L.S. WITH A PIPE IN THE MIDDLE OF THE
 L.S. DROVE PIPE & DROVE 1/2X24" REROD IN PIPE. SET DISK ON
 TOP OF REROD

SHEET 2 OF 6

V-9(1)

Donald Barnes
 May 27, 2004

NE605

FD 1 1/4" PIPE WITH COUNTY CAPPED REROD INSIDE. MONUMENT WAS DISTURBED. REPLACED WITH 6' BERNTSEN ALUM. SECTIONAL ROD MONUMENT WITH DRILL HOLE ON TOP OF CAP. FD OLD NW & NE REFERENCE PIPES. USED TO PERPETUATE LOCATION. THIS IS N62-01E 0.1 1' OF THE COMPUTED POSITION OF THE FD 2" PIPE IN THE TWP PROJECT.

C) Was the corner restored through acceptance of (1) an obliterated evidence location, or, (2) a found perpetuated location?

ACCEPTED FOUND PERPETUATED LOCATION. THIS POSITION IS IN HARMONY WITH THE EXISTING SURVEYS.

D) Describe any material discrepancy between the location of the corner as restored or reestablished and the location of that corner as previously restored or reestablished by distance and direction. Show the discrepancy on the plan view drawing under (a), above. Show the distances between the corner as previously restored or reestablished and (1) the corner as restored or reestablished, and (2) to at least 4 of the witness monuments shown on the drawing in (a), above.

DISCREPANCY BETWEEN THE OLD COMPUTED POSITION & THE INTERSECTION OF THE NE & NW REFERENCE MONUMENT DISTANCES. IT APPEARS THAT IN 1964 WHEN BATTERMAN (MAP #04356) RESET THE CORNER FROM COUNTY SURVEYORS RECORDS, 80.47 WAS MEASURED TO THE NE REFERENCE PIPE INSTEAD OF 80.37.

(E) Was the corner reestablished through lost corner proportionate methods? If so, show the method, including the directions and distances to other public land survey corners used as evidence or used for proportioning the corner location.

I, **Donald Barnes**, hereby certify that the corner location as identified by the corner code index was determined by me under my direction and control and that this U.S. Public Land Survey Monument Record is correct and complete to the best of my knowledge and belief.

seal
Donald Barnes
May 27, 2004
emboss

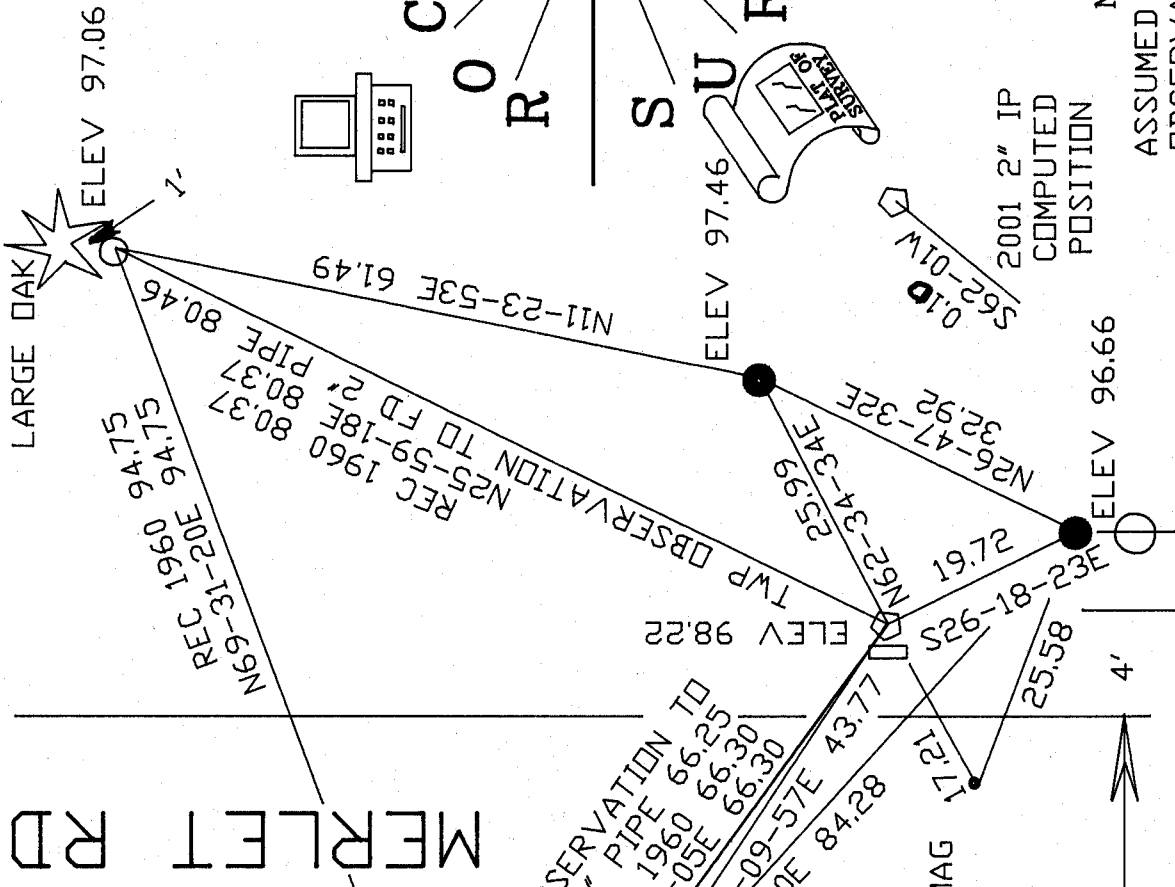
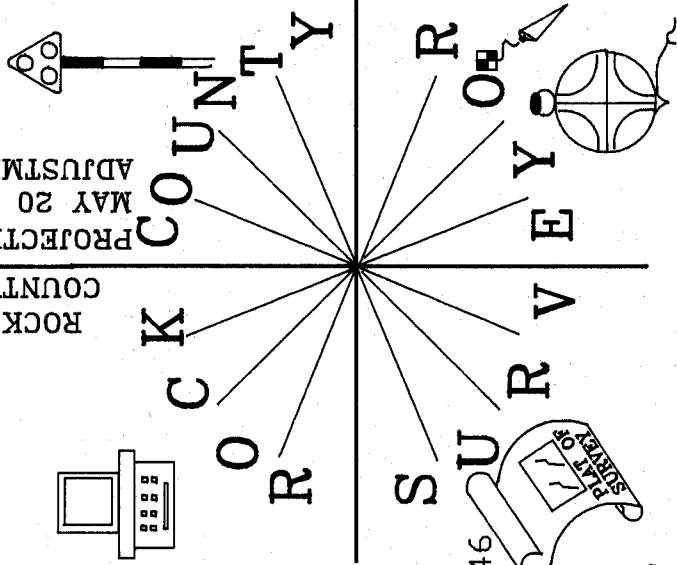
SHEET 3 OF 86

CORNER CODE **V-9(1)**

A-E 7.08 REQUIREMENT

A

ROCK COUNTY
PROJECTION
MAY 20 2004
ADJUSTMENT



FD DISTURBED 1 1/4" PIPE
WITH COUNTY CAPPED
REROD INSIDE WITH
PIECES OF CUT L.S. ON
TOP
REPLACED WITH 6' BERTSEN
SECTIONAL ROD MONUMENT
DRILL HOLE ON TOP OF CAP

SE COR
SEC 29
NEWARK TWP
T1N R11E

ELEV 100.00
COTTON GIN 11' NORTH OF NORTH
PVMT EDGE & 12'
WEST OF CENTER PVMT.

BRANDHERM RD

- RD SIGN
- FD 1" PIPE
- PLACED 3/4X24" REROD/YELLOW CAP

SHEET 4 OF 6

EMBOSSED SEAL
Donald Barnes
May 27, 2004

V-9(1)

NOT TO SCALE
ASSUMED VERTICAL DATUM
OBSERVATION SHEET #159

JD LEEHS

169

S88-47-26W 49.55

.01 168

S88-45-55W 52.54

.04 165

S88-48-26W 392.89

33.02 (605-162) 164

32.98 (162-1605)

162

33.01 (162-605)
32.99 (162-1605)

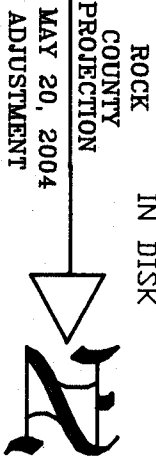
33.01 (162-605)
32.98 (162-1605)

32.97 (162-605)
32.94 (162-1605)

.03 (162-605)
.01 (162-1605)

REC 49.5
(167-605) S88-45-52W 49.57
(167-1605) S88-49-03W 49.48

#1605 COMPUTED 2' IP
POSITION FD IN TWP PROJECT
#605 DRILL HOLE
IN DISK



ROCK COUNTY PROJECTION ADJUSTMENT
MAY 20, 2004

1976 CSM6-153 305.00

1964 #4356 264.0
1981 #3266 264.0
(166-605) S1-42-06W 264.00
(166-1605) N1-41-06E 263.95

1976 CSM6-153 445.00

#169
FD PIPE
#168
FD PIPE

1979 #3279 264.00

1974 CSM4-227 165.00

1964 #4356 330.00
1974 CSM4-227 330.00

FD PIPE 0.15 DEEP

REC 49.5
(166-605) 49.48
(166-1605) 49.39

FD PIPE #166

(605-616) 0.05
(616-1605) .13

#167 FD PK 0.15' DEEP

REC 49.5
N88-45-20E

NE CDR
SEC 32

SHEET 5 OF 6

(1) - 9

Donald Barnes
May 27 2004

1979 #3260 SET IP
1964 #4356 SET PK
1973 CSM3-251 329.80
1989 #12372 REC 298.38 298.47
1989 #12372 298.47

