

U.S. PUBLIC LAND SURVEY MONUMENT RECORD

For Public Land Survey Corners in the

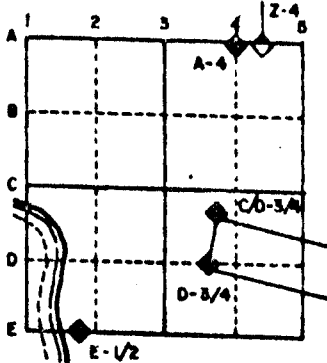
T. 3 N., R. 11 E.

CORNER CODE INDEX

	1	2	3	4	5	6	7	8	9	10	11	12	13	14	15	16	17	18	19	20	21	22	23	24	25
A																									
B																									
C	6				5				4											2					
D																									
E																									
F																									
G	7																								
H																									
J																									
K																									
L	8																								
M																									
N																									
O																									
P	9																								
Q		20																							
R																									
S																									
T	30																								
U		29																							
V																									
W																									
X	31																								
Y		32																							
Z																									

PLACE MONUMENT SYMBOL (◈) AT PROPER LOCATION ON ABOVE INDEX

EXAMPLE



CENTER TWP
ROCK COUNTY WI

IF AVAILABLE
STATE PLANE COORDINATES

North (Y) _____ Eleve. (Z) _____
 East (X) _____ Zone _____
 Hor. Datum _____ Vert. Datum _____

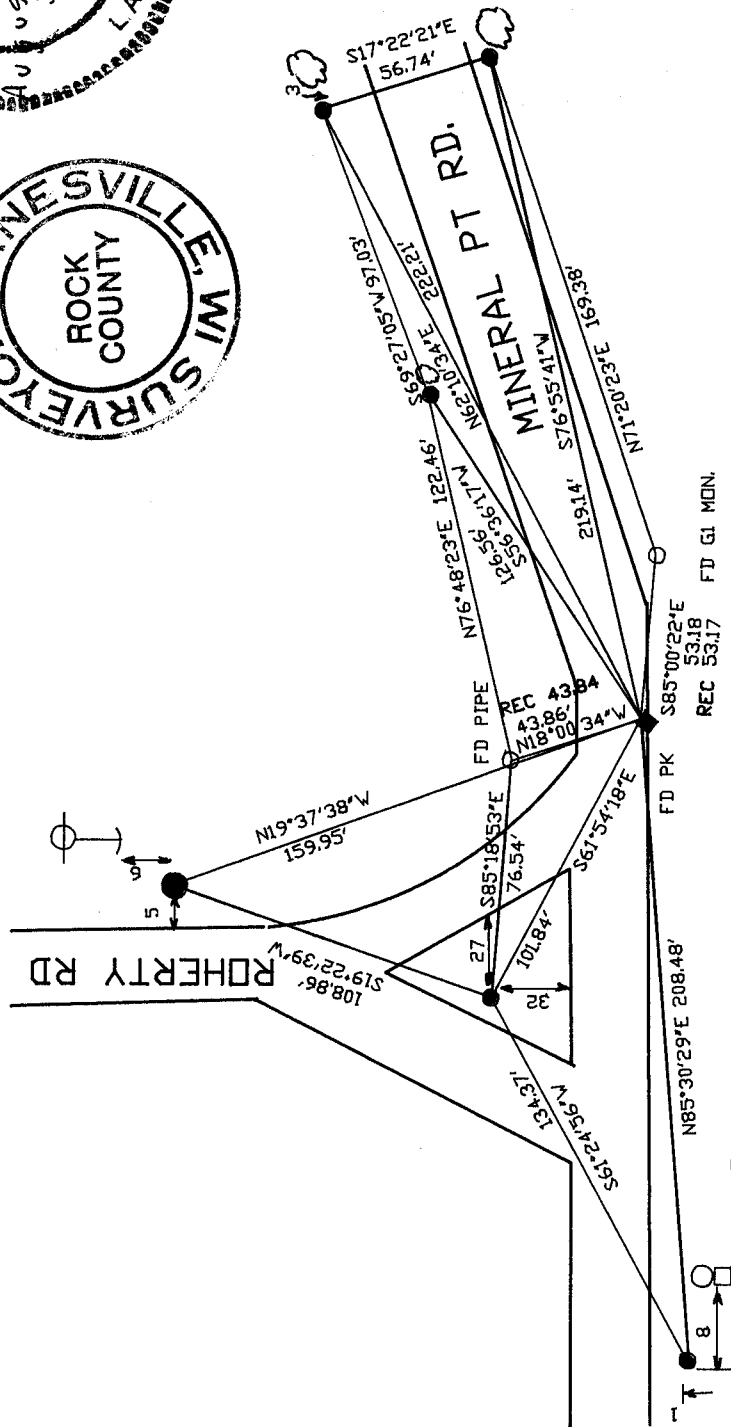
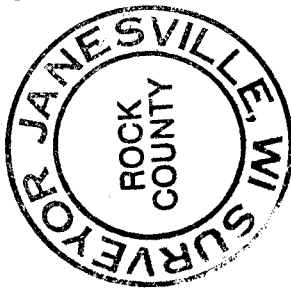
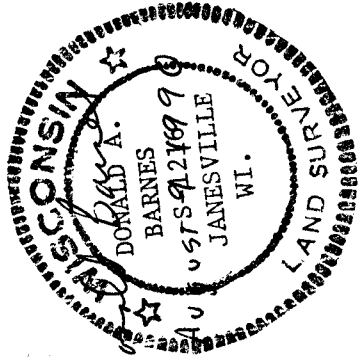
e.)

◈ CORNER MONUMENT ○ WITNESS MONUMENT

BEARINGS ARE BASED ON: ASSUMED

SEE BACK

MICROFILMED



(171)

(B) Describe any record evidence, monument evidence, occupational evidence, testimonial evidence or any other material evidence you considered, and whether the monument was found or placed.

1977 BARNES VOL 5 PG 347 ORIGINAL GOVERNMENT FIELD NOTES STATES THAT CORNER WAS 5.9' NORTH AND 2.4' WEST OF BROOK. THE CORNER WAS PROBABLY DESTROYED BY THE CONSTRUCTION OF THE CONCRETE BRIDGE. SET THE CORNER AT THE INTERSECTION OF THE CENTER LINE OF ROHERTY RD TO THE NORTH AND MINERAL POINT RD TO THE EAST AND THE N/S FENCE TO THE SOUTH. THIS IS IN HARMONY WITH OCCUPATION TO THE NORTH AND EAST.

1977 BARNES VOL 5 PG 349 SHOWS 1343 TO AN E/W FENCE TO THE NORTH AND 2686.76 TO THE W 1/4 CORNER OF SECTION 26, 1378 TO A N/S FENCE TO THE EAST AND 2760 TO THE N 1/4 CORNER OF SECTION 35, AND 2639.52 TO THE W 1/4 CORNER OF SECTION 35.

1988 BARNES VOL 6 PG 389 SHOWS TO N 1/4 CORNER OF SEC 34 N89-36-14E 2668.12, ORIG 2634.06, 1978 289-46-22E 2668.16; TO THE N 1/4 CORNER OF SEC 35 COMBS 1981 2759.94, 1977 2760.00, ORIG 2672.34, N89-21-33E 2759.90, BARNES 1977 2760.00, AND TO THE W 1/4 CORNER OF SEC 34 1977 BARNES 2639.52, ORIG 2640.

FOUND PK AND 2 REFERENCE MONUMENTS.

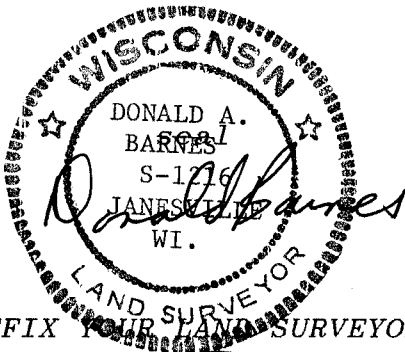
C) Was the corner restored through acceptance of (1) an obliterated evidence location, or, (2) a found perpetuated location?

ACCEPTED FOUND PK.

D) Describe any material discrepancy between the location of the corner as restored or reestablished and the location of that corner as previously restored or reestablished by distance and direction. Show the discrepancy on the plan view drawing under (a), above. Show the distances between the corner as previously restored or reestablished and (1) the corner as restored or reestablished, and (2) to at least 4 of the witness monuments shown on the drawing in (a), above.

(E) Was the corner reestablished through lost corner proportionate methods? If so, show the method, including the directions and distances to other public land survey corners used as evidence or used for proportioning the corner location.

I, Donald Barnes, hereby certify that the corner points as identified by the corner code index were, in a field survey on, August 9, 1990, established, re-established, monumented, re-monumented, recovered or restored as expressed below and in conformance with the regulations and rules as required in the current manual of survey instructions of the United States Department of Interior, Bureau of Land Management.



AFFIX YOUR SURVEYOR SEAL

COUNTY SURVEYOR FILING DATA

Date of computer entry _____

Date microfilmed _____

Number of included sheets V17(1)
CORNER CODE

