

Paper weight-110# (minimum)

Black nonfading ink required

# U.S. PUBLIC LAND SURVEY MONUMENT RECORD

For Public Land Survey Corners In:  
T. 2N. R. 13E. 4th P.M.  
CORNER CODE INDEX

WI ADMINISTRATIVE CODE A-E 7.08 REQUIREMENT  
REV 10/23/2004 USMONREC.DWG

A	1	2	3	4	5	6	7	8	9	10	11	12	13	14	15	16	17	18	19	20	21	22	23	24	25	A
B			6				5				4				3			2				1				B
C																										C
D																										D
E																										E
F																										F
G																										G
H																										H
J																										J
K																										K
L																										L
M																										M
N																										N
O																										O
P																										P
Q																										Q
R																										R
S																										S
T																										T
U																										U
V																										V
W																										W
X																										X
Y																										Y
Z																										Z

La Prairie TWP  
ROCK COUNTY WI

IF AVAILABLE  
ROCK COUNTY COORDINATES PREFERRED

North \_\_\_\_\_ Elev. \_\_\_\_\_

East \_\_\_\_\_

Hor. Datum \_\_\_\_\_ Vert. Datum \_\_\_\_\_

LATITUDE \_\_\_\_\_ ELLIPS. HT. \_\_\_\_\_

LONGITUDE \_\_\_\_\_

NAD83(91) \_\_\_\_\_ NETWORK ADJ. YR \_\_\_\_\_

GPS (X) \_\_\_\_\_ TRAVERSE (X) \_\_\_\_\_

BASED ON THE FOLLOWING CONTROL:

PLACE MONUMENT SYMBOL  AT PROPER LOCATION ON ABOVE INDEX

CORNER MONUMENT       WITNESS MONUMENT

BEARINGS ARE BASED ON: \_\_\_\_\_

FIELD BOOK \_\_\_\_\_ PAGE # \_\_\_\_\_

SHEET 1 OF 4

SHOW A PLAN VIEW DRAWING DEPICTING THE CORNER MONUMENT AND SURROUNDING PHYSICAL FEATURES, INCLUDING THE EXCAVATION AREA AND DEPTH.

PLANNING & ZONING COMMITTEE ADOPTED THIS FORM ON 12/2/1982

CORNER CODE 2-7(1)

LA624 S1/4CORSEC32

(B) Describe any record evidence, monument evidence, occupational evidence, testimonial evidence or any other material evidence you considered, and whether the monument was found or placed.

- 1835 MULLET NOV 23 WEST SOUTH SIDE SECTION 32 T2N R13E  
2640.00 SET QUARTER SECTION POST IN PRAIRIE IN  
MOUND PIT EAST OF POST 3.3'  
5280.00 SET POST CORNER SECTIONS 31 & 32 IN PRAIRIE  
IN MOUND PIT SOUTH OF POST 3.96'. LAND DRY  
ROLLING PRAIRIE FIRST RATE ROSIN WEED  
PRAIRIE GRASS & C.
- 1847 TURTLE TWN RD REC BK 1 PG 8 WE THE COMMISSIONERS  
OF HIGHWAYS OF THE TOWN OF TURTLE IN THE COUNTY OF  
ROCK & TERRITORY OF WISCONSIN HEREBY CERTIFY THAT WE  
MET AT THE HOUSE OF LEWIS HEALDS IN SAID TOWN THIS  
20TH DAY OF MAY IN THE YEAR OF OUR LORD 1847 AT ONE  
O'CLOCK PM FOR THE PURPOSE OF EXAMING THE GROUND  
ON THE LINE PETITIONED TO BE LAID OUT AS HIGHWAY BY L.  
HEALDS AND SIX OTHER, FREEHOLDERS, OF SAID TOWN.  
AND WE HEREBY CERTIFY THAT UPON BEING SATISFIED THAT  
NOTICE OF THE TIME, PLAGE AND PURPOSE OF THIS  
MEETING HAS BEEN GIVEN AS THE LAW REQUIRES, WE  
PROCEEDED TO EXAMINE THE GROUND ON THE LINE  
APPLIED FOR AND THAT WE HAVE CAUSED A SURVEY &  
DESCRIPTION OF SAID LINE TO BE MADE AND IS AS  
FOLLOWS: BEGINNING AT THE NORTH SIDE OF SEC 5 IN  
TOWN 1 NORTH OF RANGE 13 EAST, ROCK COUNTY,  
WISCONSIN TERRITORY 33' EAST OF THE QUARTER STAKE;  
THENCE SOUTH THROUGH SECTION 5, 1508.10' ON SEC 8,  
33.0' EAST OF THE CENTER LINE TO A POINT NEAR TURTLE  
GREEK IN THE LINE OF ROADS UP OR OF THE SAME, MAKING
- 1853 Mc VEAN VOL 1 PG 19 USED TO SUBDIVIDE SEC 5. STATES  
NOTHING ABOUT MON. MID WAY BETWEEN NW & NE COR SEC  
5, 2629.11 TO NE & NW COR SEC 5, VAR 6 1/2 5497.80 TO  
S 1/4 COR SEC 5, VAR 6 1/2 2865.06 TO GEN OF SEC 5.  
2634.72 FROM GEN OF SEC 5 TO W 1/4 COR SEC 5, 2634.06  
FROM GEN OF SEC 5 TO E 1/4 COR SEC 5.
- 1863 LOCKE VOL 1 PG 178 SET LARGE LIMESTONE @ S1/4 COR  
SEC 32. MIDWAY BETWEEN THE SE & SW CORNERS OF SEC  
32. 2633.73 TO SW & SE CORNERS OF SEC 32, 2645.28 TO  
CENTER OF SEC 32 & 5290.56 TO N 1/4 COR SEC 32
- 1871 RUGER REMONUMENTATION PG 219 & 220.  
EAST ON SOUTH LINE OF SW 1/4 OF SEC 32 ON  
A VAR 5-10 AT  
2634.39 INTERSECTED 1/4 LINE 4.62' SOUTH OF 1/4 COR  
FD OLD STAKE AT COR. COR VAR 5-16  
EAST ON SOUTH LINE OF SE 1/4 OF SEC 32 ON  
A VAR 4-56 AT  
2635.38 INTERSECTED EAST BOUNDARY LINE 3.3' NORTH  
OF COR. FD LARGE HARD HEAD STONE AT COR.  
COR VAR 4-52
- 1947 BATTERMAN #4640 R/R SPIKE. 2639.2X TO NE COR SEC 5 &  
2639.2X TO NW COR SEC 5.
- 1958 RICHARD A-7 @ N 1/4 COR SEC 5 DUG HOLE 4' IN DIA. X 2'  
DEEP. @ S 1/4 COR SEC 32 FD 6X6 LIMESTONE AFTER  
EXTENSIVE FIELD SEARCH. REFERENCED SAME. 115.83 SW  
TO NE COR OF HSE FOUNDATION, SOUTH 74.71 WIT. STK.,  
149.67 NW TO WIT. STK., 159.06 WEST OF AREA IN WHICH S  
1/4 COR SEC 32 SHOULD BE. 159.06' FROM NOTES ONLY!  
AT ENTRY SURVEYORS OFFICE.
- 1964 BATTERMAN VOL 4 PG 201 S 1/4 COR SEC 32 FD CUT STONE  
& REFER STAME. ON WEST SIDE OF I-90 BRIDGE. 2635.38 TO  
SE COR SEC 32, 2634.39 TO SW COR SEC 32, 160.36 EAST  
OF N 1/4 COR SEC 5.
- 1964 BATTERMAN VOL 4 PG 202 160.36 WEST OF S 1/4 COR SEC

SHEET 1 OF 4

CORNER CODE Z-7(1)

Donald Barnes  
July 23 2010

- LA624 S1/4CORSEC32  
 32. REFER SAME. 2636.19 TO NW COR SEC 5, 2639.19 TO NE COR SEC 5. FD PIPE @ CEN SEC 5 AS SET BY RHB SR.
- 1968 SHIMEALL #12740 PIPE @ N 1/4 COR SEC 5. N89-45W 1319.70 TO PK @ NW COR OF E 1/2 OF THE NW 1/4 SEC 5. S0-25W 561.61 TO PIPE. S0-25W 2944.7X TO PIPE @ CENTER OF SEC 5.
- 1974 THOM CSM 3 PG 314 PIPE @ N 1/4 COR SEC 5 THENCE WEST 1397.64 TO NE COR OF CSM.
- 1974 LEE CSM 3 PG 351 CI @ NW COR SEC 4 & S 1/4 COR SEC 32 906.38 WESTERLY TOWARDS S 1/4 COR SEC 32 TO NE COR OF CSM.
- 1974 LEE CSM 3 PG 354 CI @ NW COR SEC 4 & S 1/4 COR SEC 32 WESTERLY 604.50 TOWARDS S 1/4 COR SEC 32 TO NE COR OF CSM. ANGLE 91-02-43 @ NW COR SEC 4 FROM N/S 1/4 LINE TO S 1/4 COR SEC 32.
- 1975 LEE CSM 5 PG 92 FD PIPE @ N 1/4 COR SEC 5. WESTERLY 724.82. TO NE COR SEC CSM
- 1975 BICKEL #04645 N 1/4 COR SEC 5 PIPE 1413.90 (REC 1397.64) WESTERLY TOWARDS PIPE @ NW COR SEC 5 TO LOT COR.
- 1986 BARNES A-07 @ N 1/4 COR SEC 5 PLACED POLY MON. ON LINE WITH THE S 1/4 COR & SW COR OF SEC 32 LA PRAIRIE TOWNSHIP MID WAY BETWEEN THE NW & NE CORNERS OF SEC 5. MON. IS 1 1/2" NORTH OF THE CENTER OF PVMT. IN 1958 THE WIDOT DUG & FD A 6X6" LIMESTONE @ S 1/4 COR SEC 32. THE MON. I PLACED IS 1.71' EAST OF THE IRON PIPE THAT BATTERMAN PLACED IN 1964. THE RECORD DISTANCES TO THE NE & NW CORNERS OF SEC 5 INDICATES THAT HE INTENDED TO PLACE IT MIDWAY. SINCE THE NE & NW CORNERS OF SEC 5 WERE MOVED I DID NOT ACCEPT THE IRON PIPE. USING THE WIDOT TIE TO THE HOUSE, THE CORNER WOULD BE SOUTH OF EITHER THE PIPE THAT BATTERMAN PLACED OR THE MONUMENT I PLACED. S89-47-39E 2639.85 TO NE COR SEC 5, S89-51-13W 2639.85 TO NW COR SEC 5. REFERENCED FD PIPE & POLY MON. FD PIPE IS 1.71 WEST OF POLY.
- 1986 BARNES Z-07 @ S 1/4 COR SEC 32 FD PK & 25" DEEP FD CUT LIMESTONE. PLACED POLY MON ON TOP OF STONE. FD REC REFERENCE PIPES. WEST SIDE OF I-90 OVERPASS BRIDGE. ELEV 814.3; N/S 214,514.66; 2,274,214.66
- 1999 SAUSER CSM 22-256 S 1/4 COR SEC 32 COMPUTED FROM COUNTY TIES. USED FOR LINE.

PRIOR TO PAVING I FD POLY MON @ N 1/4 COR SEC 5 & REFERENCE TIES. @ S 1/4 COR SEC 32 PRIOR TO PAVING I FD PVMT CUT & NEW ASPHALT UNDER I-90 OVERPASS BRIDGE. ALSO NEAR N 1/4 COR SEC 5 FD PIPE. AFTER PAVING I PLACED "SURVEY MARKER" SPIKES AT S 1/4 COR & N 1/4 COR. AFTER PAVING FD MAGNETIC SOUND @ S 1/4 COR SEC 32.

C) Was the corner restored through acceptance of (1) an obliterated evidence location, or, (2) a found perpetuated location?

ACCEPTED FD POLY MON. & CUT LIMESTONE POSITION.

I, **Donald Barnes**, hereby certify that the corner location as identified by the corner code index was determined by me under my direction and control and that this U.S. Public Land Survey Monument Record is correct and complete to the best of my knowledge and belief.

*Donald Barnes*  
 Donald Barnes

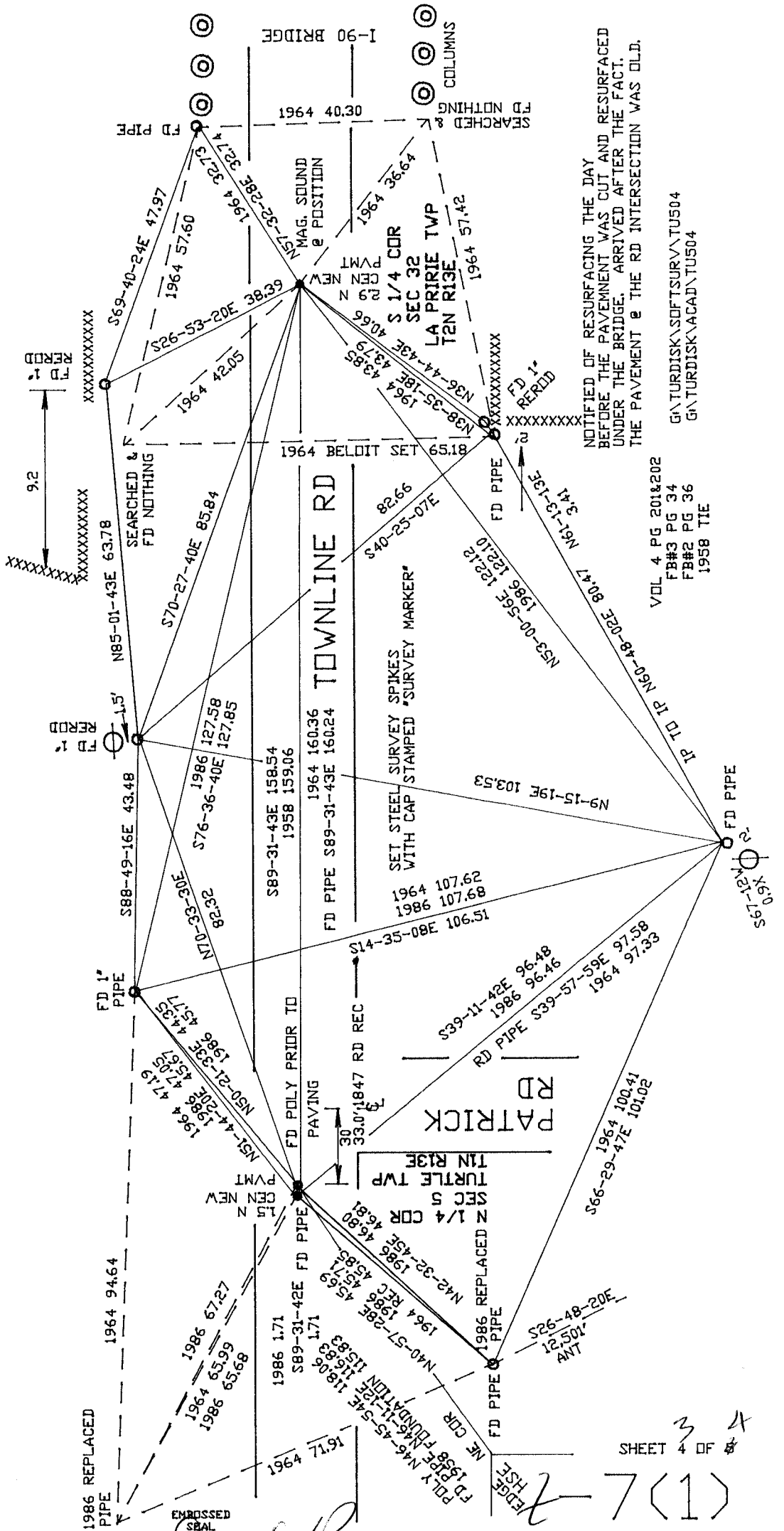
SHEET 2 OF 4

7/23/2010

CORNER CODE

**Z-7(1)**

A.E. 7.08 REQUIREMENT



NOTIFIED OF RESURFACING THE DAY BEFORE THE PAVEMENT WAS CUT AND RESURFACED UNDER THE BRIDGE. ARRIVED AFTER THE FACT. THE PAVEMENT @ THE RD INTERSECTION WAS OLD.

VOL 4 PG 201&202  
 FB#3 PG 34  
 FB#2 PG 36  
 1958 TIE

G:\TURDISK\SOFTSURV\TU504  
 G:\TURDISK\ACAD\TU504

SHEET 4 OF 4

*Ames*  
 7-23-2010

7(1)

