

(b.) Describe any record evidence, monument evidence, occupational evidence, testimonial evidence or any other material evidence you considered, and whether the monument was found or placed.

1958 THE WI DEPARTMENT OF TRANSPORTATION FOUND AND REFERENCED A CUT LIMESTONE WITH WOOD HUBS BUT NEVER REPLACED THE MONUMENT AFTER I 90 WAS FINISHED.

I COULD NOT FIND THE WOOD HUBS AND ALSO DUG FOR THE STONE BUT FOUND NOTHING.

ESTABLISHED THE CORNER ON LINE WITH THE SE & SW CORNERS OF SECTION 17 AT PROPRATE DISTANCE. I USED RUGERS REMONUMENTATION DISTANCES.FOR PRORATION THIS IS IN HARMONY WITH:

- 1) THE RECORD POLARIS BEARING BETWEEN THE SW & S 1/4 CORNERS OF SEC 17
- 2) THE 1966 R.H. BATTERMAN ANGLE BETWEEN THE W 1/4 CORNER OF SECTION 20 & THE SW & S 1/4 CORNERS OF SECTION 17.

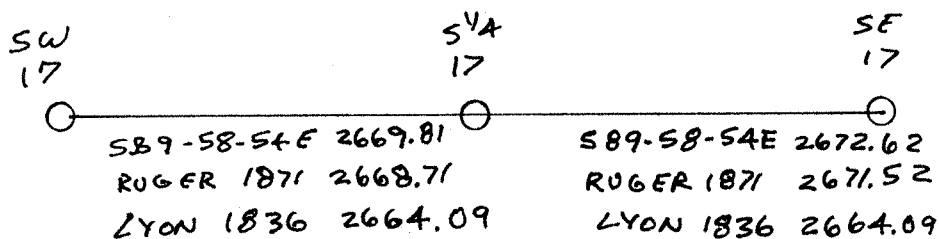
I DID NOT PLACE A MONUMENT BECAUSE OF THE NEARNESS OF IT TO I 90.

(c.) Was the corner restored through acceptance of (1) an obliterated evidence location, or, (2) a found perpetuated location?

(d.) Describe any material discrepancy between the location of the corner as restored or reestablished and the location of that corner as previously restored or reestablished by distance and direction. Show the discrepancy on the plan view drawing under (a), above. Show the distances between the corner as previously restored or reestablished and (1) the corner as restored or reestablished, and (2) to at least 4 of the witness monuments shown on the drawing in (a), above.

(e.) Was the corner reestablished through lost corner proportionate methods? If so, show the method, including the directions and distances to other public land survey corners used as evidence or used for proportioning in determining the corner location.

YES



I, Donald Barnes, hereby certify that the corner points as identified by the corner code index were, in a field survey on April 28 1986, established, re-established, monumented, re-monumented, recovered or restored as expressed below and in conformance with the regulations and rules as required in the current manual of survey instructions of the United States Department of Interior, Bureau of Land Management.



COUNTY SURVEYOR FILING DATA

Date of Computer Entry _____

Date Received _____

Date Microfilmed _____

Treasurer's Receipt No. _____

Number of Included Sheets 1

AFFIX YOUR LAND SURVEYOR SEAL.

CORNER CODE N 7 (1)

U.S. PUBLIC LAND SURVEY MONUMENT RECORD

For Public Land Survey Corners in the

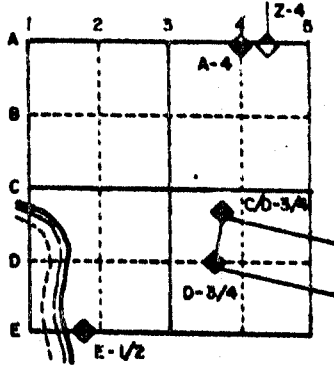
T. 2N., R. 13E.

CORNER CODE INDEX

	1	2	3	4	5	6	7	8	9	10	11	12	13	14	15	16	17	18	19	20	21	22	23	24	25
A																									
B																									
C	6																								
D																									
E																									
F																									
G	7																								
H																									
I																									
J																									
K	8																								
L																									
M																									
N																									
O																									
P	9																								
Q																									
R																									
S																									
T	30																								
U																									
V																									
W																									
X	31																								
Y																									
Z																									

PLACE MONUMENT SYMBOL (◆) AT PROPER LOCATION ON ABOVE INDEX

EXAMPLE



LA PRAIRIE TWP
ROCK COUNTY WI

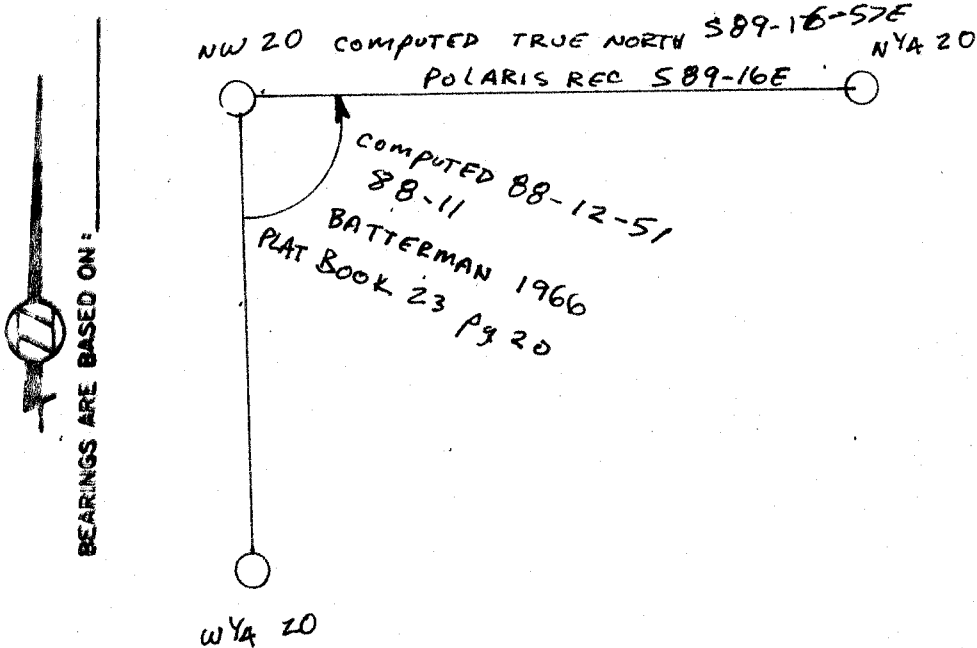
IF AVAILABLE
STATE PLANE COORDINATES

North (Y) _____ Eleve. (Z) _____
 East (X) _____ Zone _____
 Hor. Datum _____ Vert. Datum _____

a.)

◆ CORNER MONUMENT

○ WITNESS MONUMENT



MICROFILMED

SHEET 2 OF 2

CORNER CODE: N 7 (1)