

U.S. PUBLIC LAND SURVEY MONUMENT RECORD

For Public Land Survey Corners in:
T. 2N., R. 13E 4th P.M.
CORNER CODE INDEX

WI ADMINISTRATIVE CODE A-E 7.08 REQUIREMENT


LA PRAIRIE TWP
ROCK COUNTY, WI

IF AVAILABLE
ROCK COUNTY COORDINATES PREFERRED

	1	2	3	4	5	6	7	8	9	10	11	12	13	14	15	16	17	18	19	20	21	22	23	24	25
A																									
B	6																								
C		5																							
D			4																						
E				3																					
F					2																				
G						1																			
H	7	8	9	10	11	12																			
I																									
J																									
K	18	17	16	15	14	13																			
L																									
M																									
N																									
O	19	20	21	22	23	24																			
P																									
Q																									
R																									
S	30	29	28	27	26	25																			
T																									
U																									
V																									
W																									
X	31	32	33	34	35	36																			
Y																									
Z																									

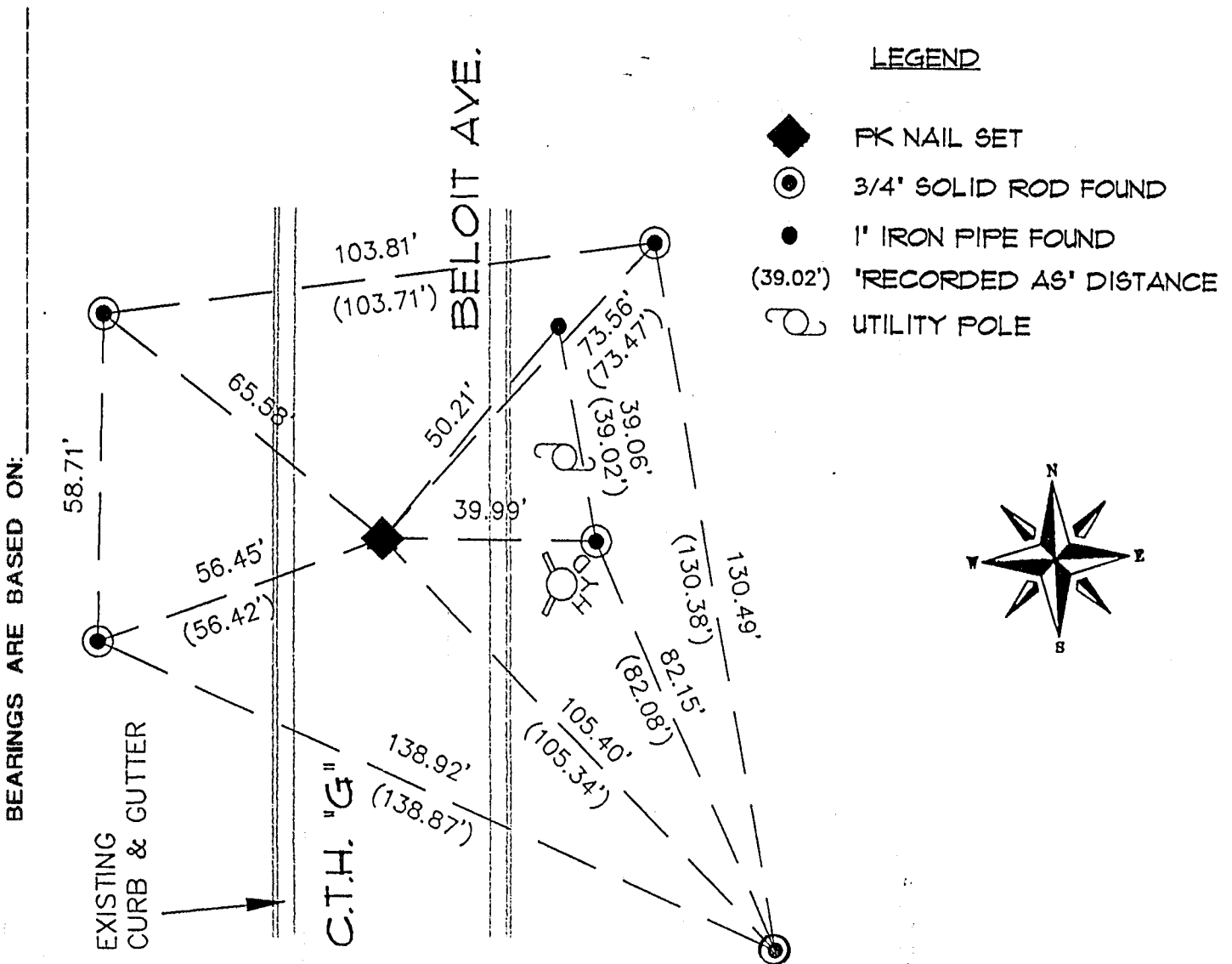
PLACE MONUMENT SYMBOL  AT PROPER LOCATION ON ABOVE INDEX

North _____ Elev. _____
 East _____
 Hor. Datum _____ Vert. Datum _____
 LATITUDE _____ ELLIPS. HT. _____
 LONGITUDE _____
 ELLIPS. DATUM _____
 NAD83(91) _____ COUNTY _____ LIST _____
 GPS (X) _____ TRAVERSE (X) _____
 BASED ON THE FOLLOWING CONTROL: _____

 CORNER MONUMENT

WITNESS MONUMENT

(a)



FIELD BOOK _____ PAGE # _____

SHEET 1 OF 2

SHOW A PLAN VIEW DRAWING DEPICTING THE CORNER MONUMENT AND SURROUNDING PHYSICAL FEATURES, INCLUDING THE EXCAVATION AREA AND DEPTH.

PLANNING & ZONING COMMITTEE ADOPTED THE ABOVE FORM ON 12/2/1982

CORNER CODE J-1

B) Describe any record evidence, monument evidence, occupational evidence, testimonial evidence or any other material evidence you considered, and whether the monument was found or placed.

POLY MONUMENT WAS NOT FOUND.
I RE-ESTABLISHED THE SECTION CORNER POSITION USING THE TIES FROM A U.S. PUBLIC LAND SURVEY MONUMENT RECORD BY DONALD BARNES DATED JULY 5, 1994 AND SET A PK NAIL AT THE SECTION CORNER.

C) Was the corner restored through acceptance of (1) an obliterated evidence location, or, (2) a found perpetuated location?

OBLITERATED EVIDENCE LOCATION

D) Describe any material discrepancy between the location of the Corner as restored or reestablished and the location of that corner as previously restored or reestablished by distance and direction. Show the discrepancy on the plan view drawing under (a), above. Show the distances between the corner as previously restored or reestablished and (1) the corner as restored or reestablished, and (2) to at least 4 of the witness monuments shown on the drawing in (a), above.

NO KNOWN DISCREPANCY.

E) Was the corner reestablished through lost corner proportionate methods? If so, show the method, including the directions and distances to other public land survey corners used as evidence or used for proportioning the corner location.

NO

I, PAUL KNUDSON, hereby certify that the corner location as identified by the corner code index was determined by me under by direction and control and that this U.S. Public Land Survey Monument Record is correct and complete to the best of my knowledge and belief.



Paul Knudson
July 21, 1999

Number of included sheets 2

VIERBICHER Assoc., Inc.

A-E 7.08 REQUIREMENT CORNER CODE _____