

# U.S. PUBLIC LAND SURVEY MONUMENT RECORD

For Public Land Survey Corners in the

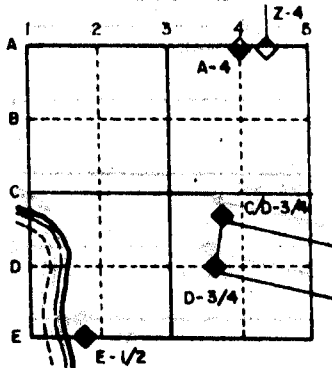
T. 3 N., R. 12 E.

## CORNER CODE INDEX

	1	2	3	4	5	6	7	8	9	10	11	12	13	14	15	16	17	18	19	20	21	22	23	24	25
A																									
B																									
C																									
D																									
E																									
F																									
G																									
H																									
I																									
J																									
K																									
L																									
M																									
N																									
O																									
P																									
Q																									
R																									
S																									
T																									
U																									
V																									
W																									
X																									
Y																									
Z																									

PLACE MONUMENT SYMBOL (◆) AT PROPER LOCATION ON ABOVE INDEX

### EXAMPLE



JANESVILLE TWP  
ROCK COUNTY WI

IF AVAILABLE  
STATE PLANE COORDINATES

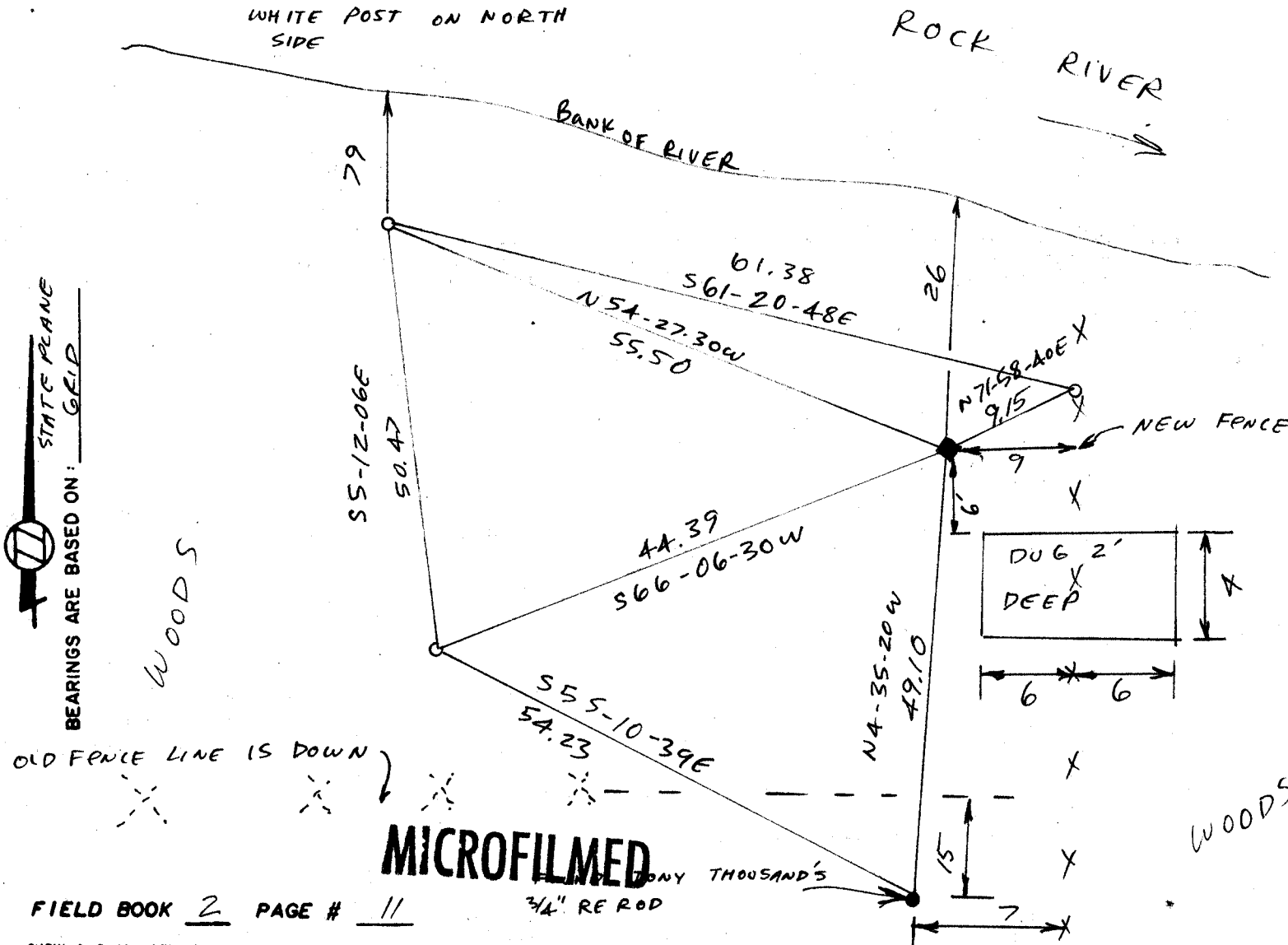
North (Y) 272,844.76 Eleve. (Z) \_\_\_\_\_  
 East (X) 2,243,893.19 Zone \_\_\_\_\_  
 Hor. Datum \_\_\_\_\_ Vert. Datum \_\_\_\_\_

(a.)

◆ CORNER MONUMENT

○ WITNESS MONUMENT 1/2 X 24 RE-ROD

Poly Monument with  
WHITE POST ON NORTH  
SIDE



FIELD BOOK 2 PAGE # 11

3/4" RE-ROD

SHOW A PLAN VIEW DRAWING DEPICTING THE CORNER MONUMENT AND SURROUNDING PHYSICAL FEATURES, INCLUDING THE EXCAVATION AREA AND DEPTH. THE CORNER MONUMENT SHALL HAVE THE FOLLOWING CHARACTERISTICS: 1) HAVE AT LEAST TWO PREDETERMINED BREAK-OFF POINTS. 2) IF BROKEN, LEAVE A PERMANENTLY MAGNETIZED REMNANT AT THE ORIGINAL POINT. 3) MUST BE EXTENDABLE. 4) THE CAP IS INSCRIBED: ROCK COUNTY SURVEY MONUMENT - PENALTY FOR DISTURBING MARKER. 5) OR AN EXISTING CUT LIMESTONE. AN IRON PIPE 1 1/2" X 4'0" (MINIMUM) MAY BE USED IN AREAS WHERE GROUND WATER IS WITHIN ONE FOOT OF THE SURFACE. IF THE CORNER IS OCCUPIED BY AN IMPROVEMENT (MANHOLE, BURIED CABLE, ETC.) ANY DURABLE, DISTINCT MONUMENT MAY BE USED. CORNERS SHALL BE REFERENCED WITH AT LEAST 4 DURABLE WITNESS MONUMENTS. WITNESS MONUMENTS SHALL BE MADE OF CONCRETE, NATURAL STONE, IRON OR OTHER EQUALLY DURABLE MATERIAL, EXCEPT WOOD. DESCRIBE THE CORNER AND THE WITNESS MONUMENTS.

CORNER CODE:

E 9

(b.) Describe any record evidence, monument evidence, occupational evidence, testimonial evidence or any other material evidence you considered, and whether the monument was found or placed.

12/16/1833 ORSON LYON PLACED A POST FOR THE MEANDER POST & CORNER TO SECTIONS 4, 5, 8, & 9. W.O. 12S5E 2.34 & W.O. 10S6W2.37

1861 RUGER VOL 1 PG 159 PLACED HARD HEAD 16X8X6. MAP SHOWS THAT THE E 1/4 CORNER OF SECTION 8 WAS PLACED ON LINE AND MID WAY BETWEEN THIS CORNER AND THE SE CORNER OF SECTION 8.

1866 LOCKE VOL 1 PG 159 FOUND RUGERS STONE BUT DOES NOT SHOW DISTANCE TO IT.  
1884 RUGER VOL 2 PG 386 FOUND STUMPS OF BOTH BTs AND DROVE STAKE & SURROUNDED IT WITH 4 HH STONES.

4/19/1962 TONY THOUSAND IN A SURVEY FOR JACK JEFFERS SHOWS THAT HE PLACED AN IRON STAKE AT THE CORNER.

THERE ARE MANY SURVEYS THAT HAVE USED TONY'S STAKE AS THE CORNER. I DID NOT ACCEPT THE STAKE BECAUSE OF THE FOLLOWING REASONS:

1) THERE IS NO DOCUMENTATION BY TONY AS TO HOW HE ESTABLISHED THE CORNER.

2) HIS POSITION IS 43.2 SOUTH OF THE PROJECTED SOUTH EAST & EAST QUARTER CORNER OF SECTION 8.

(c.) Was the corner restored through acceptance of (1) an obliterated evidence location, or, (2) a found perpetuated location? NO

I DUG AT THE PROJECTION OF THE SW AND E/14 CORNERS OF SECTION 8 AND FOUND NOTHING.

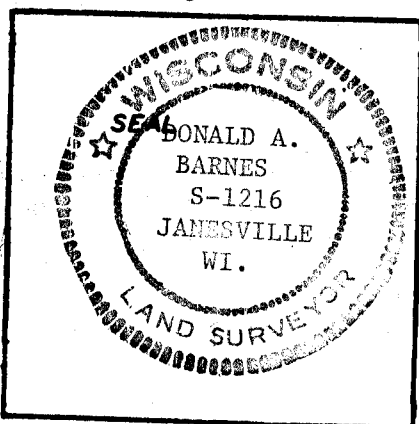
(d.) Describe any material discrepancy between the location of the corner as restored or reestablished and the location of that corner as previously restored or reestablished by distance and direction. Show the discrepancy on the plan view drawing under (a), above. Show the distances between the corner as previously restored or reestablished and (1) the corner as restored or reestablished, and (2) to at least 4 of the witness monuments shown on the drawing in (a), above.

SEE MAP

(e.) Was the corner reestablished through lost corner proportionate methods? If so, show the method, including the directions and distances to other public land survey corners used as evidence or used for proportioning in determining the corner location.

SEE SHEET 2.

I, Donald Barnes, hereby certify that the corner points as identified by the corner code index were, in a field survey on June 9 1987, established, re-established, monumented, re-monumented, recovered or restored as expressed below and in conformance with the regulations and rules as required in the current manual of survey instructions of the United States Department of Interior, Bureau of Land Management.



COUNTY SURVEYOR FILING DATA

Date of Computer Entry \_\_\_\_\_

Date Received \_\_\_\_\_

Date Microfilmed \_\_\_\_\_

Treasurer's Receipt No. \_\_\_\_\_

Number of Included Sheets 1

AFFIX YOUR LAND SURVEYOR SEAL. CORNER CODE E 9

# U.S. PUBLIC LAND SURVEY MONUMENT RECORD

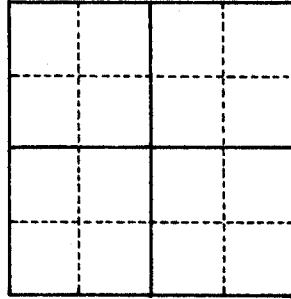
For Public Land Survey Corners in the  
T. 3 N., R. 12 E.

## CORNER CODE INDEX

For Miscellaneous Corners within Sec.

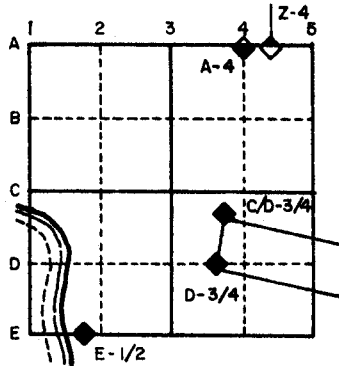
\_\_\_\_\_, T. \_\_\_\_\_ N., R. \_\_\_\_\_ E.  
JANESVILLE

	1	2	3	4	5	6	7	8	9	10	11	12	13	14	15	16	17	18	19	20	21	22	23	24	25
A																									
B																									
C	6																								
D																									
E																									
F																									
G	7																								
H																									
J																									
K																									
L	18																								
M																									
N																									
O																									
P	19																								
Q																									
R																									
S																									
T	30																								
U																									
V																									
W																									
X	31																								
Y																									
Z																									



1. Above code numbers are positioned Meander, Claim, or Fractional corners of the section.
2. Township corner code numbers shall be applied to the corners of above typical section.

### EXAMPLE

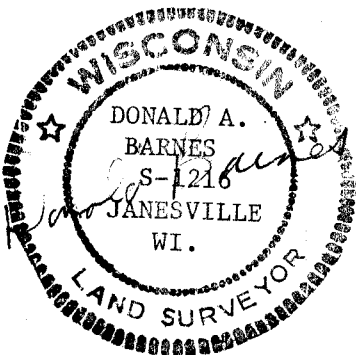
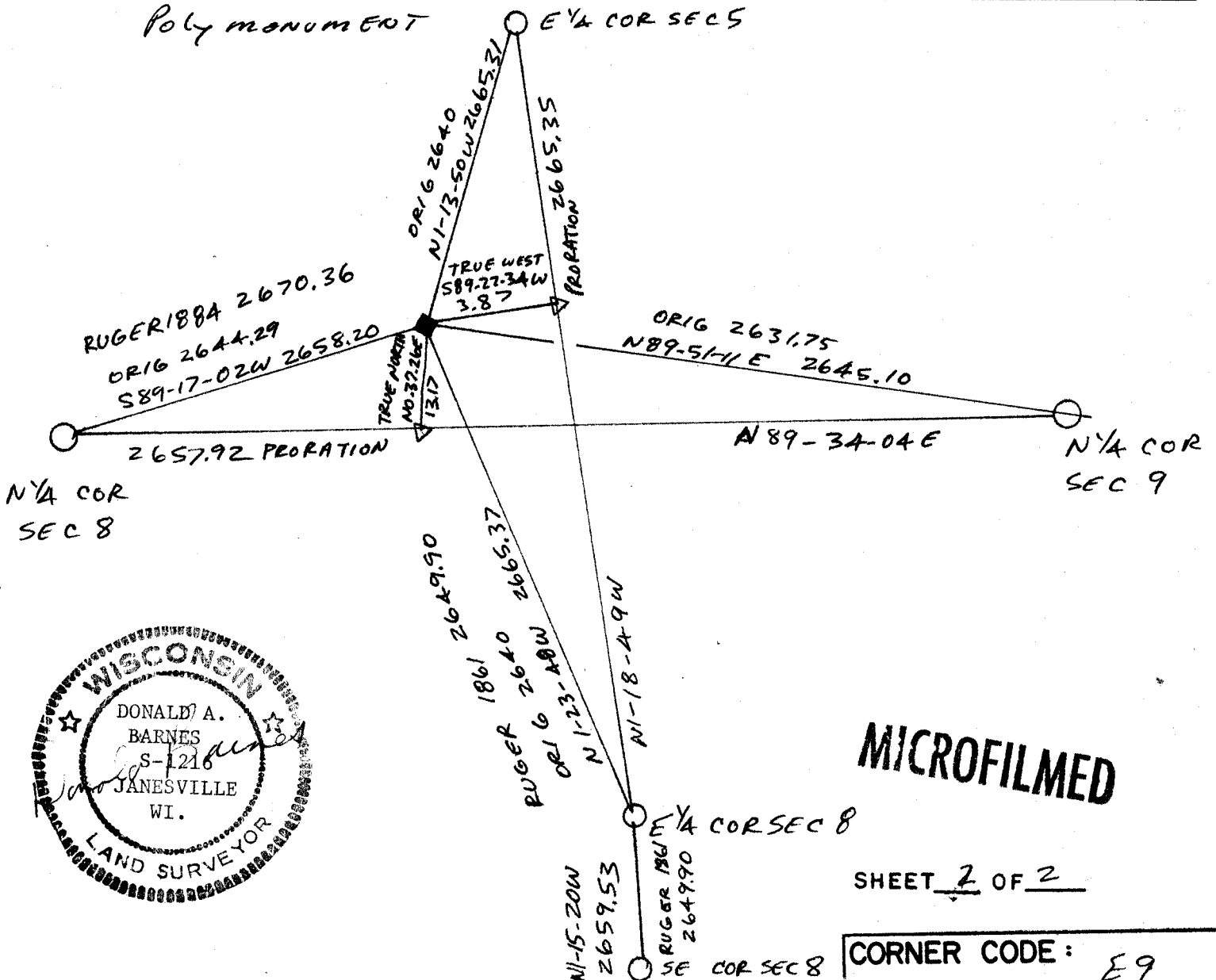


PLACE MONUMENT SYMBOL (◆) AT PROPER LOCATION ON ABOVE INDEX

IF AVAILABLE  
STATE PLANE COORDINATES

North (Y) \_\_\_\_\_ Eleve. (Z) \_\_\_\_\_  
 East (X) \_\_\_\_\_ Zone \_\_\_\_\_  
 Hor. Datum \_\_\_\_\_ Vert. Datum \_\_\_\_\_

*Poly monument*



**MICROFILMED**

SHEET 2 OF 2

CORNER CODE: E9