

U.S. PUBLIC LAND SURVEY MONUMENT RECORD

For Public Land Survey Corners in the

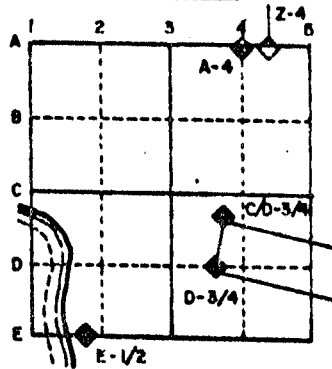
T. 3 N., R. 12 E.

CORNER CODE INDEX

	1	2	3	4	5	6	7	8	9	10	11	12	13	14	15	16	17	18	19	20	21	22	23	24	25
A																									
B																									
C																									
D																									
E																									
F																									
G																									
H																									
J																									
K																									
L																									
M																									
N																									
O																									
P																									
Q																									
R																									
S																									
T																									
U																									
V																									
W																									
X																									
Y																									
Z																									

PLACE MONUMENT SYMBOL (◆) AT PROPER LOCATION ON ABOVE INDEX

EXAMPLE



JANESVILLE TWP
ROCK COUNTY WI

IF AVAILABLE STATE PLANE COORDINATES

North (Y) 251,740.09 Eleve. (Z) _____
 East (X) 2,257,597.18 Zone _____
 Hor. Datum _____ Vert. Datum _____

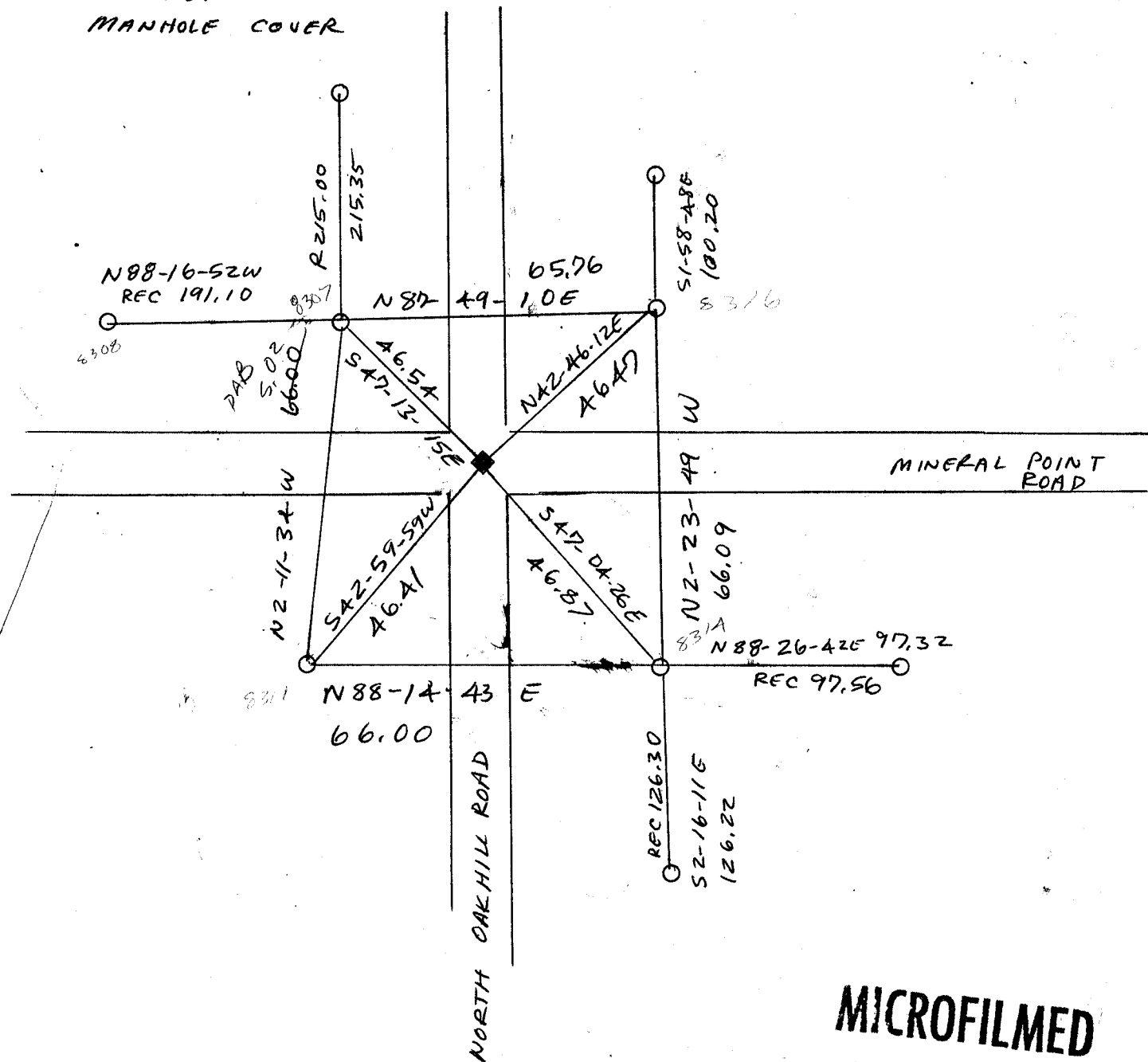
c.)

◆ CORNER MONUMENT

○ WITNESS MONUMENT FOUND PIPES

CORNER IS ON
MANHOLE COVER

BEARINGS ARE BASED ON:



MICROFILMED

SHEET 1 OF 2

CORNER CODE: V 19

(a) Describe any record evidence, monument evidence, occupational evidence, testimonial evidence or any other material evidence you considered, and whether the monument was found or placed.

1907 RUGER "PLEASANT VIEW ADDITION" BOOK 7 PAGE 21 DOES NOT STATE WHAT IS AT CORNER.

1948 KAKUSKE "MILLER & BERKNESS' ADDITION". STATES NOTHING ABOUT THE CORNER. SHOWS THE AN ANGLE OF 89-52 FROM THE SW CORNER, SOUTH QUARTER CORNER, AND THE NORTH QUARTER CORNERS OF SECTION 26.

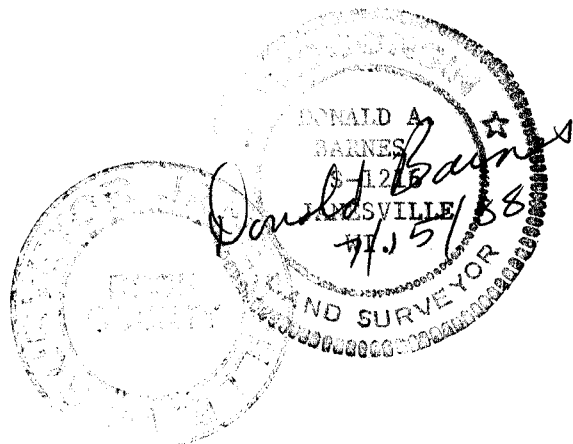
1959 KAKUSKE "MILLER & BERKNESS'S THIRD ADDITION" BOOK 17 PAGE 24. STATES THAT THE CORNER IS A POINT AT THE INTERSECTION OF OAKHILL AND MINERAL POINT ROAD. SHOWS A DISTANCE OF 330.00 TO THE INTERSECTION OF THE EASTERN PROPERTY LINE PROJECTED TO THE SECTION LINE.

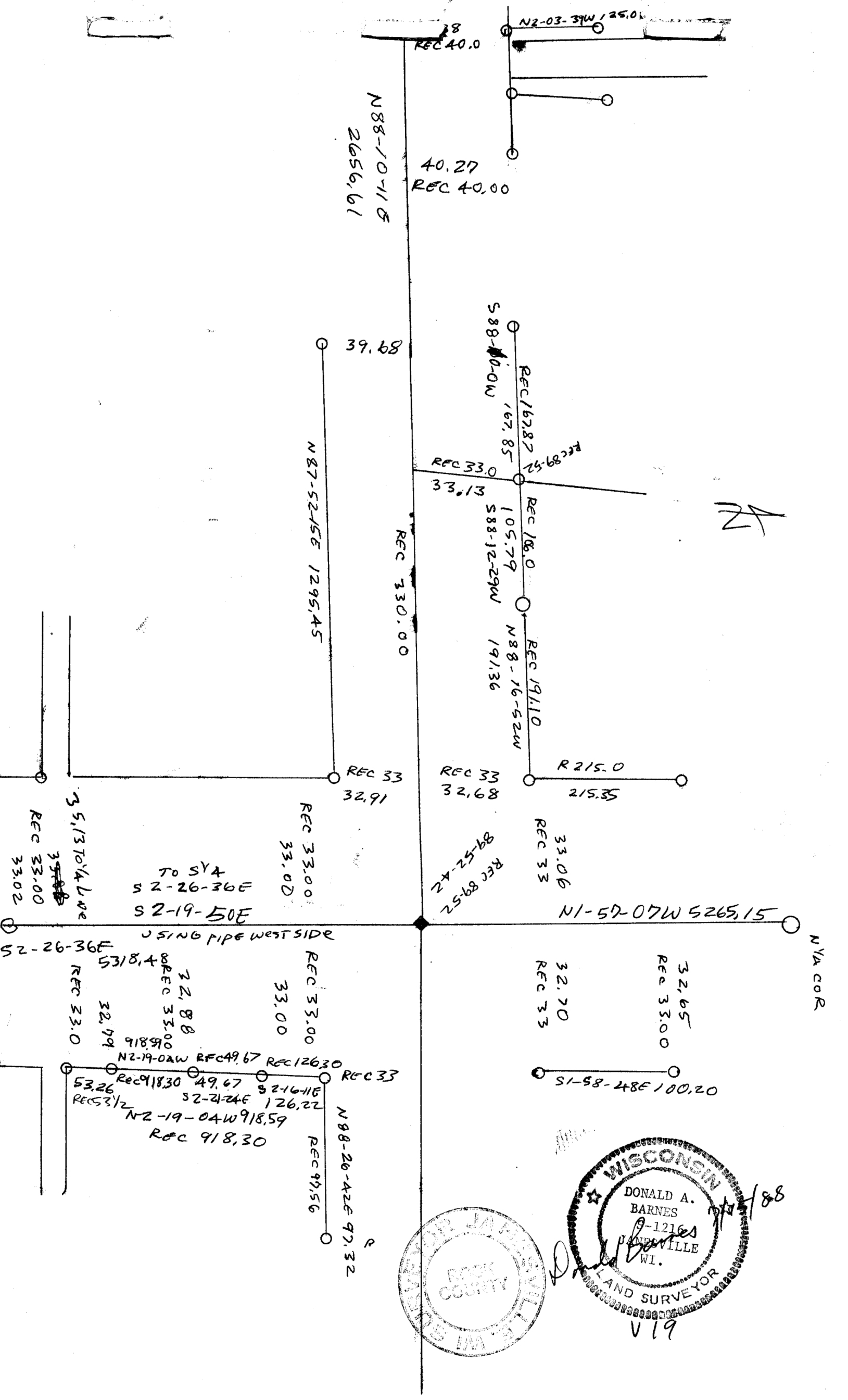
1960 BATTERMAN "SILVER HEIGHTS" BOOK 20 PAGE 35. LEGEND SHOWS AN EXISTING PIPE AND A DISTANCE OF 330.00 TO THE INTERSECTION OF THE EASTERN PROPERTY LINE PROJECTED TO THE SECTION LINE.

1979 COMBS "PEPPERMINT PRAIRIE" BOOK 28 PG 34. STATES CORNER IS OCCUPIED BY STORM SEWER. SHOWS A DISTANCE OF 224.0 FROM THE INTERSECTION OF THE SECTION LINE AND THE PROJECTION OF THE EAST LOT LINE.

(c) Was the corner restored through acceptance of (1) an obliterated evidence location, or, (2) a found perpetuated location?

I used ruger's subdivision to determine the position of the corner. This is in harmony with the other found pipes that are shown on the sketch.





N88-10-11S
2656.61

REC 40.0

40.27
REC 40.00

N2-03-37W 25.01

S88-10-00W

REC 167.87
167.85

REC 89-52

REC 33.0
33.13

105.79
S88-12-29W

REC 186.0

191.36

REC 191.10

R 215.0
215.35

REC 33
32.68

REC 33
33.06

N1-57-07W 5265.15

NVA COR

35.13 TO VA LANE
REC 33.00
33.02

TO SYA
S 2-26-36E
S 2-19-50E

REC 33.00
33.00

REC 33
32.91

USING PIPE WEST SIDE

S 2-26-36E
5318.4
REC 33.0
32.79

22.88
REC 33.00
918.90

REC 33.00
33.00

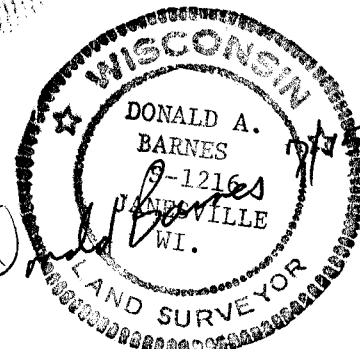
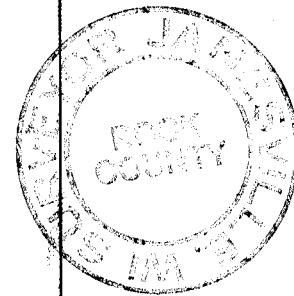
REC 33
32.70

32.65
REC 33.00

S1-58-48E 100.20

N2-19-02W REC 49.67 REC 126.30 REC 33
53.26 REC 918.30 49.67 S 2-16-11E
REC 33.12 32-21-24E 126.22
N2-19-04W 918.59
REC 918.30

N 88-20-42E 97.32
REC 97.56



V 19