

U.S. PUBLIC LAND SURVEY MONUMENT RECORD

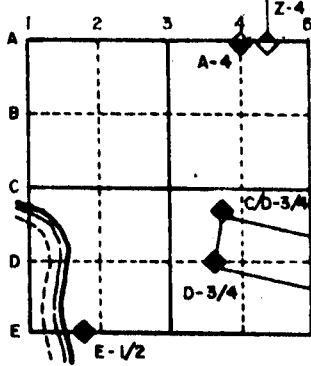
For Public Land Survey Corners in the

T. 3 N., R. 12 E.

CORNER CODE INDEX

	1	2	3	4	5	6	7	8	9	10	11	12	13	14	15	16	17	18	19	20	21	22	23	24	25
A																									
B																									
C	6																								
D		5																							
E			4																						
F				3																					
G					2																				
H						1																			
I																									
J																									
K	7																								
L		8																							
M			9																						
N				10																					
O					11																				
P						12																			
Q							13																		
R								14																	
S									15																
T										16															
U											17														
V												18													
W													19												
X														20											
Y															21										
Z																22									
																	23								
																		24							
																			25						
																				26					
																					27				
																						28			
																							29		
																								30	
																									31
																									32
																									33
																									34
																									35
																									36

EXAMPLE



JANESVILLE TWP
ROCK COUNTY WI

IF AVAILABLE
STATE PLANE COORDINATES

North (Y) 257,001.90 Elevation (Z) 867.9

East (X) 2,257,417.98 Zone _____

Hor. Datum _____ Vert. Datum _____

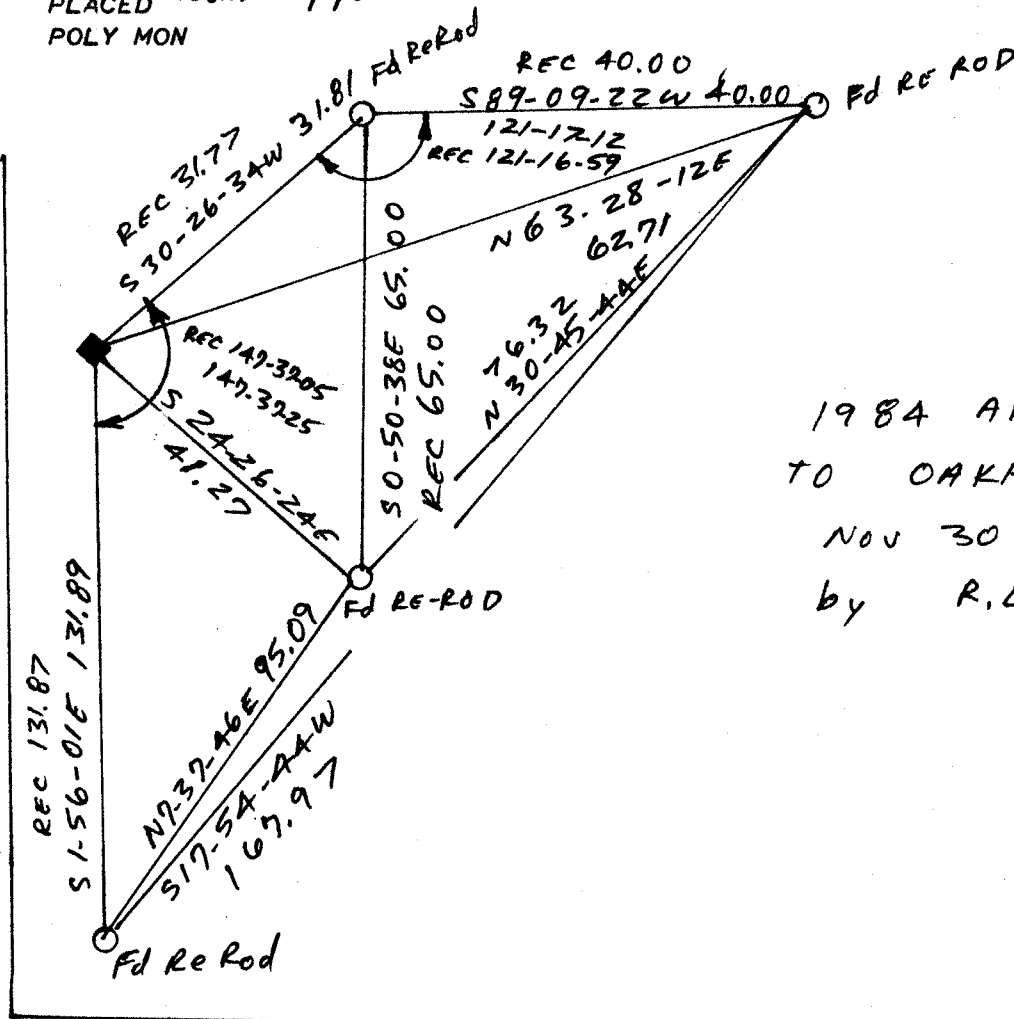
PLACE MONUMENT SYMBOL (◆) AT PROPER LOCATION ON ABOVE INDEX

(a.)

◆ CORNER MONUMENT

○ WITNESS MONUMENT

PLACED FOUND 1" PIPE
POLY MON



BEARINGS ARE BASED ON: JANESVILLE PROJECT

NORTH OAKHILL AVE

1984 ADDITION
TO OAKHILL CEMETERY
NOV 30 1984
by R.L. THOM

HAMILTON ST.

FIELD BOOK 1 PAGE # 66

MICROFILMED

SHOW A PLAN VIEW DRAWING DEPICTING THE CORNER MONUMENT AND SURROUNDING PHYSICAL FEATURES, INCLUDING THE EXCAVATION AREA AND DEPTH. THE CORNER MONUMENT SHALL HAVE THE FOLLOWING CHARACTERISTICS: 1) HAVE AT LEAST TWO PREDETERMINED BREAK-OFF POINTS. 2) IF BROKEN, LEAVE A PERMANENTLY MAGNETIZED REMNANT AT THE ORIGINAL POINT. 3) MUST BE EXTENDABLE. 4) THE CAP IS INSCRIBED: ROCK COUNTY SURVEY MONUMENT - PENALTY FOR DISTURBING MARKER. 5) OR AN EXISTING CUT LIMESTONE. AN IRON PIPE 1 1/2" x 4'0" (MINIMUM) MAY BE USED IN AREAS WHERE GROUND WATER IS WITHIN ONE FOOT OF THE SURFACE. IF THE CORNER IS OCCUPIED BY AN IMPROVEMENT (MANHOLE, BURIED CABLE, ETC.) ANY DURABLE, DISTINCT MONUMENT MAY BE USED. CORNERS SHALL BE REFERENCED WITH AT LEAST 4 DURABLE WITNESS MONUMENTS. WITNESS MONUMENTS SHALL BE MADE OF CONCRETE, NATURAL STONE, IRON OR OTHER EQUALLY DURABLE MATERIAL, EXCEPT WOOD. DESCRIBE THE CORNER AND THE WITNESS MONUMENTS.

CORNER CODE:

R 19

(b.) Describe any record evidence, monument evidence, occupational evidence, testimonial evidence or any other material evidence you considered, and whether the monument was found or placed.

FOUND 1" PIPE 10" DEEP. IN R.L. THOM'S 1984 CEMETERY PLAT HE SHOWS AN ALUMINUM MONUMENT.

15" DEEP FOUND 1 1/2" IRON PIPE. 1" PIPE WAS IN DEEPER PIPE. 15" DEEP FOUND LIMESTONE TO THE NORTH, SANDSTONE TO THE WEST, HARD HEAD STONE TO THE SOUTH AND EAST. DROVE PIPES DEEP AND PLACED POLY MONUMENT ON TOP.

1867 LOCKE VOL 1 PG 177 B.T. (SOUTH) STANDING

1863 LOCKE VOL 1 PG 188 FOUND SOUTH BT CORNER OF CEMETERY FENCE NEARLY RIGHT

1868 LOCKE VOL 1 PG 310 FOUND STUMP OF SBT. CORNER POST OF CEMETERY FENCE ON CORNER

1871 RUGER VOL 2 PG 62 FOUND STUMP OF SW BT & WHERE STUMP OF N.W. BT HAD BEEN DUG UP. SET LIMESTONE 14X7X5 JUST EAST OF CORNER POST OF CEMETERY LOT

1878 RUGER VOL 2 PG 238 REFERSE TO PREVIOUS SURVEY AND SHOWS DISTANCE TO THE EAST AND WEST SECTION CORNERS

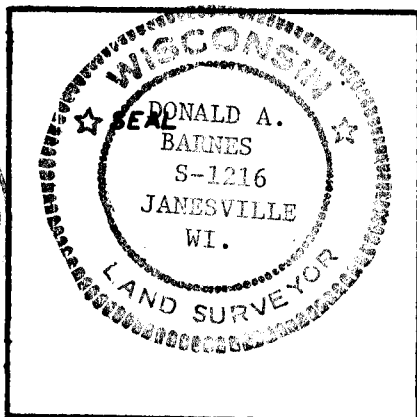
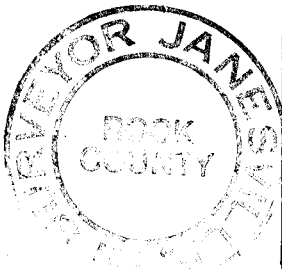
(c.) Was the corner restored through acceptance of (1) an obliterated evidence location, or, (2) a found perpetuated location?

ACCEPTED FOUND PERPETUATED LOCATION

(d.) Describe any material discrepancy between the location of the corner as restored or reestablished and the location of that corner as previously restored or reestablished by distance and direction. Show the discrepancy on the plan view drawing under (a), above. Show the distances between the corner as previously restored or reestablished and (1) the corner as restored or reestablished, and (2) to at least 4 of the witness monuments shown on the drawing in (a), above.

(e.) Was the corner reestablished through lost corner proportionate methods? If so, show the method, including the directions and distances to other public land survey corners used as evidence or used for proportioning in determining the corner location.

I, Donald Barnes, hereby certify that the corner points as identified by the corner code index were, in a field survey on Jan 19 1987, established, re-established, monumented, re-monumented, recovered or restored as expressed below and in conformance with the regulations and rules as required in the current manual of survey instructions of the United States Department of Interior, Bureau of Land Management.



COUNTY SURVEYOR FILING DATA

Date of Computer Entry _____

Date Received _____

Date Microfilmed _____

Treasurer's Receipt No. _____

Number of Included Sheets _____

AFFIX YOUR LAND SURVEYOR SEAL. CORNER CODE R19