

# U.S. PUBLIC LAND SURVEY MONUMENT RECORD

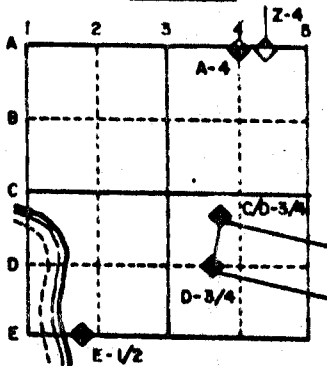
For Public Land Survey Corners in the  
T. 3 N., R. 12 E.

## CORNER CODE INDEX

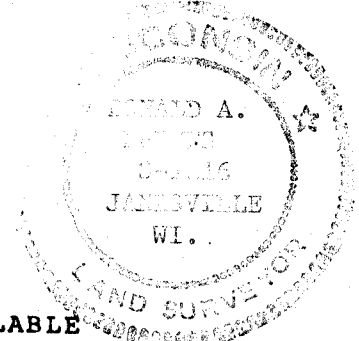
	1	2	3	4	5	6	7	8	9	10	11	12	13	14	15	16	17	18	19	20	21	22	23	24	25
A																									
B	6																								
C		5																							
D			4																						
E				3																					
F					2																				
G																									
H	7																								
I		8																							
J			9																						
K				10																					
L					11																				
M						12																			
N							13																		
O								14																	
P									15																
Q										16															
R											17														
S												18													
T													19												
U														20											
V															21										
W																22									
X																	23								
Y																		24							
Z																			25						

PLACE MONUMENT SYMBOL (◆) AT PROPER LOCATION ON ABOVE INDEX

### EXAMPLE



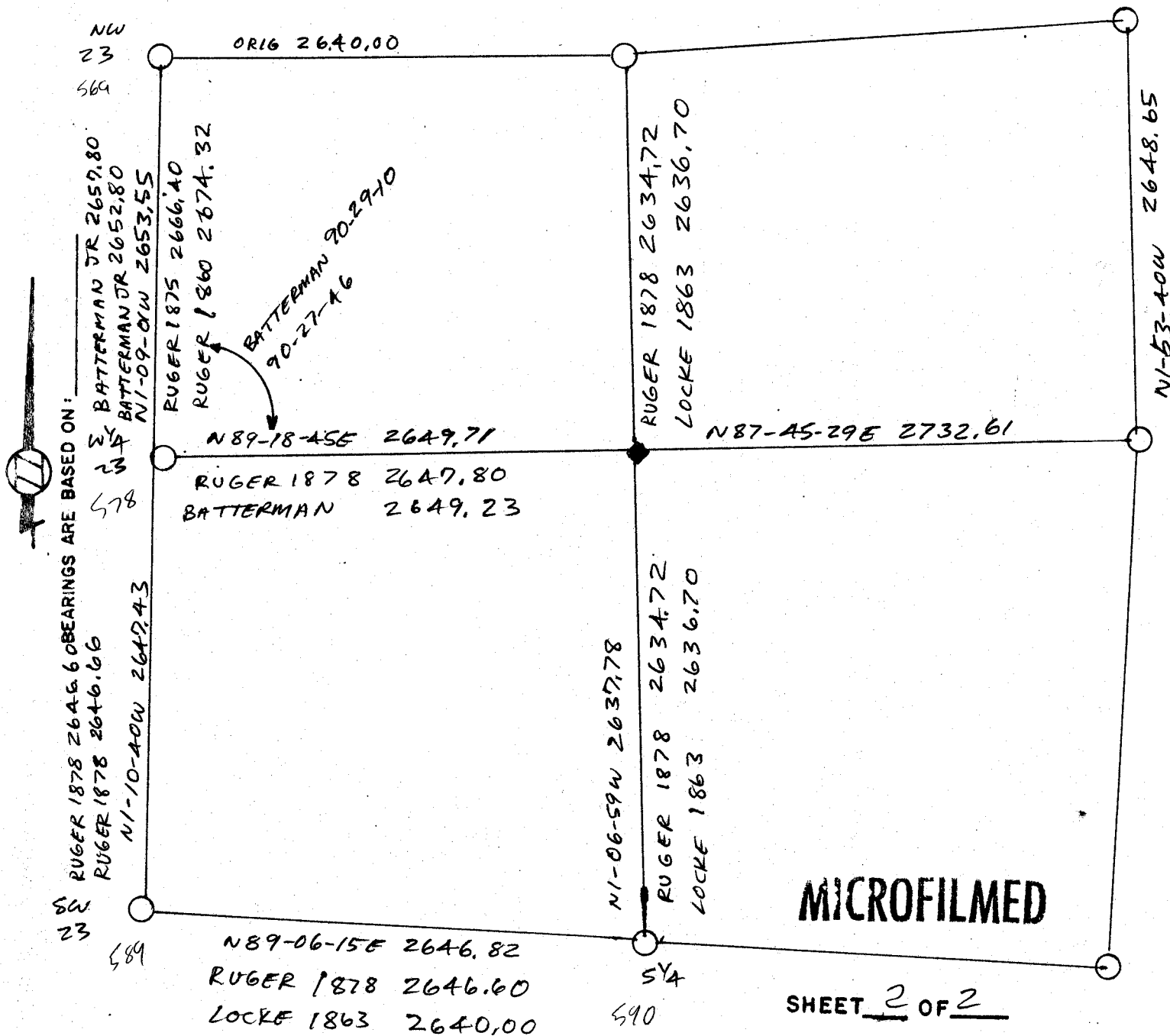
JANESVILLE TWP  
ROCK COUNTY WI



IF AVAILABLE  
STATE PLANE COORDINATES

North (Y) \_\_\_\_\_ Eleve. (Z) \_\_\_\_\_  
 East (X) \_\_\_\_\_ Zone \_\_\_\_\_  
 Hor. Datum \_\_\_\_\_ Vert. Datum \_\_\_\_\_

◆ CORNER MONUMENT ○ WITNESS MONUMENT



MICROFILMED

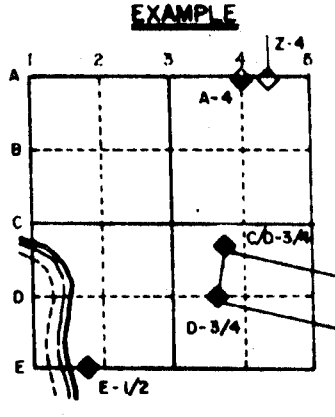
SHEET 2 OF 2

CORNER CODE: P 19

# U.S. PUBLIC LAND SURVEY MONUMENT RECORD

For Public Land Survey Corners in the  
 T. 3 N., R. 12 E.  
**CORNER CODE INDEX**

	2	3	4	5	6	7	8	9	10	11	12	13	14	15	16	17	18	19	20	21	22	23	24	25	
A																									
B	6																								
C		5																							
D			4																						
E				3																					
F					2																				
G																									
H	7																								
I		8																							
J			9																						
K				10																					
L					11																				
M						12																			
N	18																								
O		17																							
P			16																						
Q				15																					
R					14																				
S						13																			
T							12																		
U								11																	
V									10																
W										9															
X											8														
Y												7													
Z													6												



JANESVILLE TWP  
ROCK COUNTY WI

IF AVAILABLE  
 STATE PLANE COORDINATES

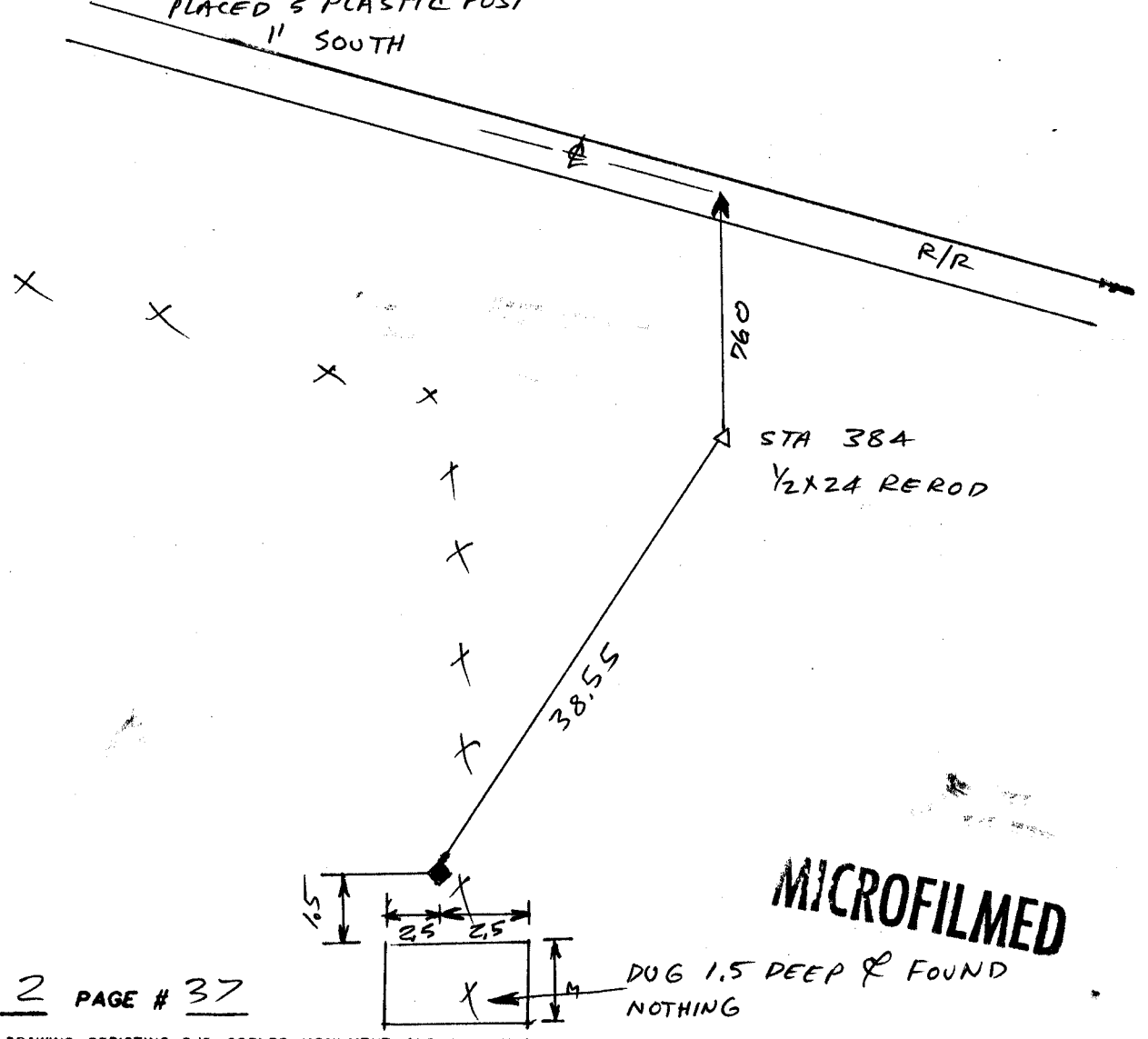
North (Y) \_\_\_\_\_ Eleve. (Z) \_\_\_\_\_  
 East (X) \_\_\_\_\_ Zone \_\_\_\_\_  
 Hor. Datum \_\_\_\_\_ Vert. Datum \_\_\_\_\_

PLACE MONUMENT SYMBOL (◆) AT PROPER LOCATION ON ABOVE INDEX

(a) ◆ CORNER MONUMENT      ○ WITNESS MONUMENT

2" PIPE 1' ABOVE GROUND  
 PLACED 5' PLASTIC POST  
 1" SOUTH

BEARINGS ARE BASED ON:



FIELD BOOK 2 PAGE # 37

MICROFILMED

SHOW A PLAN VIEW DRAWING DEPICTING THE CORNER MONUMENT AND SURROUNDING PHYSICAL FEATURES, INCLUDING THE EXCAVATION AREA AND DEPTH. THE CORNER MONUMENT SHALL HAVE THE FOLLOWING CHARACTERISTICS: 1) HAVE AT LEAST TWO PREDETERMINED BREAK-OFF POINTS. 2) IF BROKEN, LEAVE A PERMANENTLY MAGNETIZED REMNANT AT THE ORIGINAL POINT. 3) MUST BE EXTENDABLE. 4) THE CAP IS INSCRIBED: ROCK COUNTY SURVEY MONUMENT - PENALTY FOR DISTURBING MARKER. 5) OR AN EXISTING CUT LIMESTONE. AN IRON PIPE 1 1/2" x 4'0" (MINIMUM) MAY BE USED IN AREAS WHERE GROUND WATER IS WITHIN ONE FOOT OF THE SURFACE. IF THE CORNER IS OCCUPIED BY AN IMPROVEMENT (MANHOLE, BURIED CABLE, ETC.) ANY DURABLE, DISTINCT MONUMENT MAY BE USED. CORNERS SHALL BE REFERENCED WITH AT LEAST 4 DURABLE WITNESS MONUMENTS. WITNESS MONUMENTS SHALL BE MADE OF CONCRETE, NATURAL STONE, IRON OR OTHER EQUALLY DURABLE MATERIAL, EXCEPT WOOD. DESCRIBE THE CORNER AND THE WITNESS MONUMENTS.

CORNER CODE: P 19

(b.) Describe any record evidence, monument evidence, occupational evidence, testimonial evidence or any other material evidence you considered, and whether the monument was found or placed.

.1863 VOL 1 PG 188 LOCKE PLACED STAKE & 4 STONES IN MOUND. PIT 3 FT N.W. 1 LIMESTONE ON SOUTH & 1 ON E, HH ON N & HH ON W. (SHOWS THAT IT IS EQUAL DISTANCE BETWEEN THE N & S 1/4 CORNERS.)  
1878 VOL 2 PG 238 RUGER PLACED HH 15x9x7 SURROUNDED IT BY 4 LIMESTONES. (SHOWS THAT IT IS EQUAL DISTANCE BETWEEN THE N & S 1/4 CORNERS.)  
SURVEYS BY B.J. SUNNY & BATTERMAN CALL FOR A 2" PIPE.  
I FOUND A 2" PIPE. FOUND 10x7x9 HH ON NW EDGE OF PIPE. DUG AND FOUND 8" DEEP FLAT LIMESTONES TO THE WEST & TO THE NORTH. ALSO FOUND LIMESTONES LEANING ON E & SW SIDE OF PIPE. DUG 1,5 DEEP TO THE SOUTH AND FOUND NOTHING.

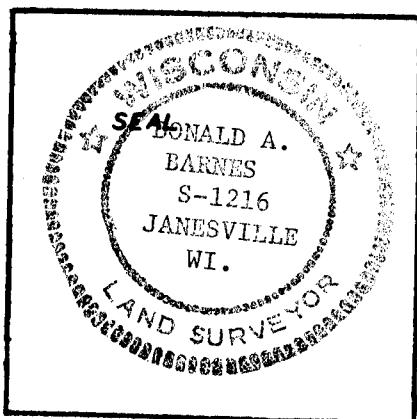
(c.) Was the corner restored through acceptance of (1) an obliterated evidence location, or, (2) a found perpetuated location?

ACCEPTED CORNER AS ESTABLISHED BY LOCKE AND PERPETUATED BY RUGER AND OTHERS.

(d.) Describe any material discrepancy between the location of the corner as restored or reestablished and the location of that corner as previously restored or reestablished by distance and direction. Show the discrepancy on the plan view drawing under (a), above. Show the distances between the corner as previously restored or reestablished and (1) the corner as restored or reestablished, and (2) to at least 4 of the witness monuments shown on the drawing in (a), above.

(e.) Was the corner reestablished through lost corner proportionate methods? If so, show the method, including the directions and distances to other public land survey corners used as evidence or used for proportioning in determining the corner location.

I, Donald Barnes, hereby certify that the corner points as identified by the corner code index were, in a field survey on Apr. 18 1988, established, re-established, monumented, re-monumented, recovered or restored as expressed below and in conformance with the regulations and rules as required in the current manual of survey instructions of the United States Department of Interior, Bureau of Land Management.



COUNTY SURVEYOR FILING DATA

Date of Computer Entry \_\_\_\_\_

Date Received \_\_\_\_\_

Date Microfilmed \_\_\_\_\_

Treasurer's Receipt No. \_\_\_\_\_

Number of Included Sheets 1

AFFIX YOUR LAND SURVEYOR SEAL. CORNER CODE P 19