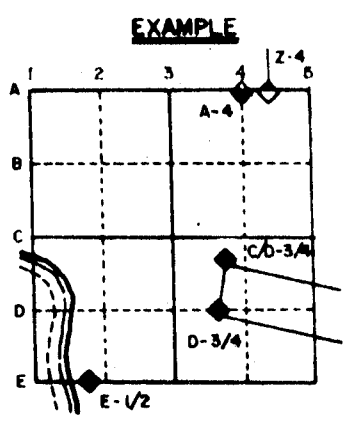


U.S. PUBLIC LAND SURVEY MONUMENT RECORD

For Public Land Survey Corners in the
T. 3 N., R. 12 E

CORNER CODE INDEX

	2	3	4	5	6	7	8	9	10	11	12	13	14	15	16	17	18	19	20	21	22	23	24	25
A																								
B	6	5	4	3	2																			
C																								
D																								
E																								
F																								
G	7	8	9	10	11	12																		
H																								
I																								
J																								
K	18	17	16	15	14	13																		
L																								
M																								
N																								
O																								
P	19	20	21	22	23	24																		
Q																								
R																								
S																								
T	30	29	28	27	26	25																		
U																								
V																								
W																								
X	31	32	33	34	35	36																		
Y																								
Z																								

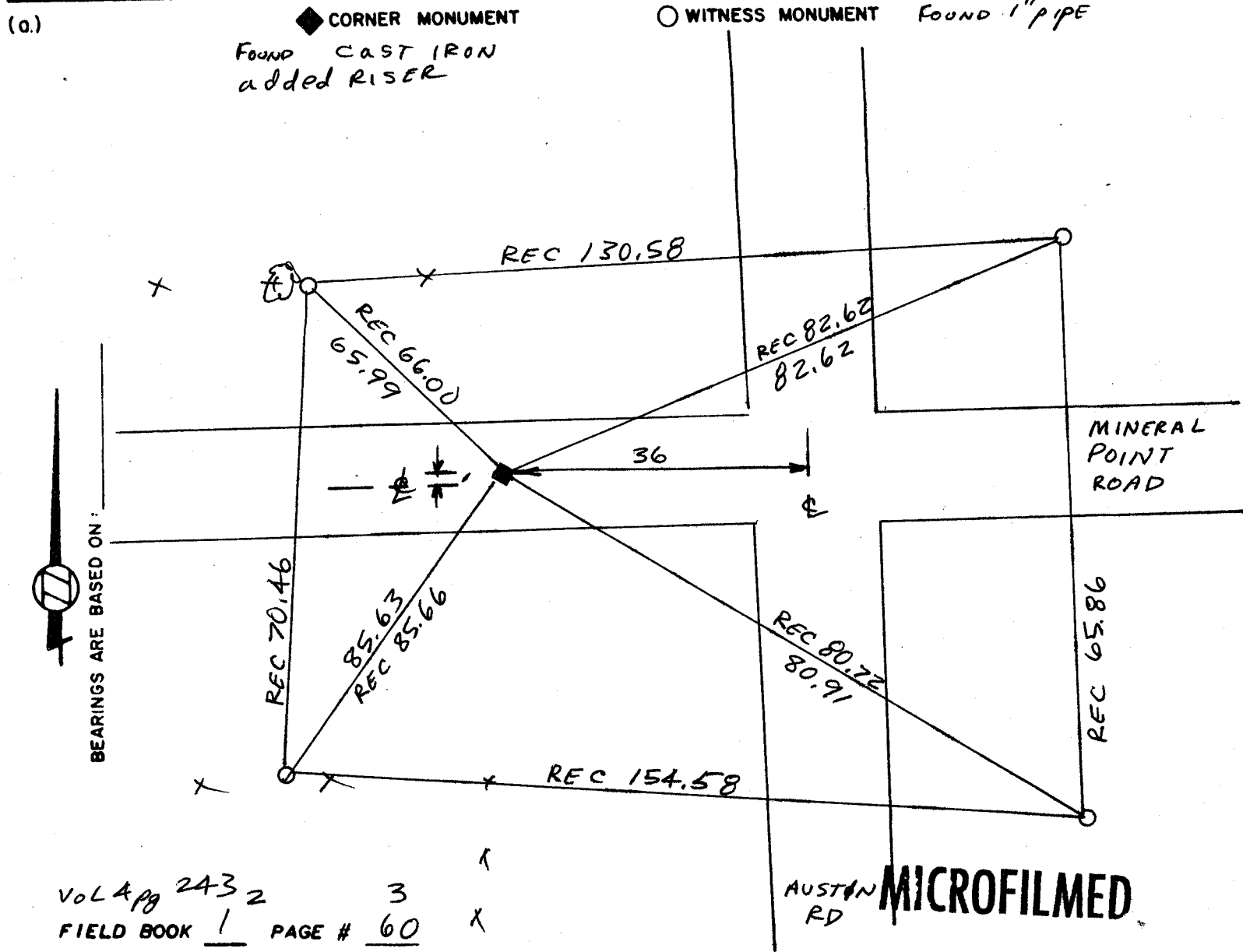


JANESVILLE TWP
ROCK COUNTY WI

IF AVAILABLE
 STATE PLANE COORDINATES

North (Y) 251,559.48 Eleve. (Z) 902.1
 East (X) 2,249,611.88 Zone _____
 Hor. Datum _____ Vert. Datum _____

PLACE MONUMENT SYMBOL (◆) AT PROPER LOCATION ON ABOVE INDEX
251,559.67
2,249,612.59 HURD



SHOW A PLAN VIEW DRAWING DEPICTING THE CORNER MONUMENT AND SURROUNDING PHYSICAL FEATURES, INCLUDING THE EXCAVATION AREA AND DEPTH. THE CORNER MONUMENT SHALL HAVE THE FOLLOWING CHARACTERISTICS: 1) HAVE AT LEAST TWO PREDETERMINED BREAK-OFF POINTS. 2) IF BROKEN, LEAVE A PERMANENTLY MAGNETIZED REMNANT AT THE ORIGINAL POINT. 3) MUST BE EXTENDABLE. 4) THE CAP IS INSCRIBED: ROCK COUNTY SURVEY MONUMENT - PENALTY FOR DISTURBING MARKER. 5) OR AN EXISTING CUT LIMESTONE. AN IRON PIPE 1 1/2" x 4'0" (MINIMUM) MAY BE USED IN AREAS WHERE GROUND WATER IS WITHIN ONE FOOT OF THE SURFACE. IF THE CORNER IS OCCUPIED BY AN IMPROVEMENT (MANHOLE, BURIED CABLE, ETC.) ANY DURABLE, DISTINCT MONUMENT MAY BE USED. CORNERS SHALL BE REFERENCED WITH AT LEAST 4 DURABLE WITNESS MONUMENTS. WITNESS MONUMENTS SHALL BE MADE OF CONCRETE, NATURAL STONE, IRON OR OTHER EQUALLY DURABLE MATERIAL, EXCEPT WOOD. DESCRIBE THE CORNER AND THE WITNESS MONUMENTS.

CORNER CODE:
V13

(b.) Describe any record evidence, monument evidence, occupational evidence, testimonial evidence or any other material evidence you considered, and whether the monument was found or placed.

1868 LOCKE VOL 1 PG 319 FOUND STAKE PLACED BY SELF IN PLACE OF OLD STAKE. SET LOCUST STAKE WITH SANDSTONE ON WEST SIDE.
1877 RUGER VOL 2 PG 226 FOUND STANDSTONE ON CORNER. STONE BADLY CRUMBLLED. SET IN ITS PLACE LIMESTONE 20 x 12 x 4 1/2 SURROUNDED BY 5 HH.
1882 RUGER VOL 2 PG 270 SHOWS DISTANCES TO IT & REFERS TO SURVEY ON PAGE 226.
1932 SUNNY VOL 3 PG 208 DUG LARGE HOLE & FOUND NOTHING. SET 40D SPIKE.
1966 BATTERMAN JR. VOL 4 PG 243 FOUND 1" PIPE SET BY THOM
197? HURD VOL 5 PG 517 STATE PLANE COORDINATES.
FOUND PK AND CAST IRON MONUMENT UNDER THAT.

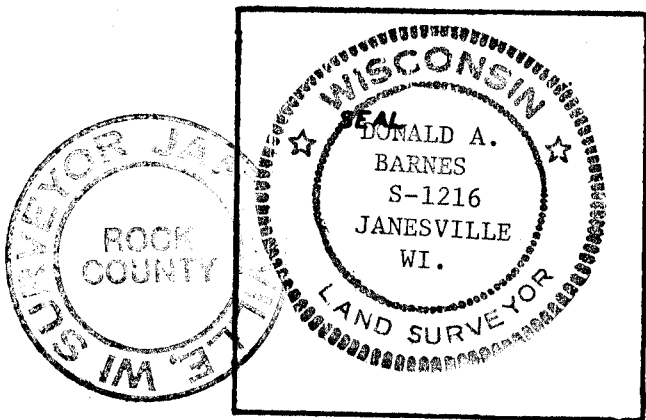
(c.) Was the corner restored through acceptance of (1) an obliterated evidence location, or, (2) a found perpetuated location?

ACCEPTED FOUND PERPETUATED LOCATION.

(d.) Describe any material discrepancy between the location of the corner as restored or reestablished and the location of that corner as previously restored or reestablished by distance and direction. Show the discrepancy on the plan view drawing under (c), above. Show the distances between the corner as previously restored or reestablished and (1) the corner as restored or reestablished, and (2) to at least 4 of the witness monuments shown on the drawing in (c), above.

(e.) Was the corner reestablished through lost corner proportionate methods? If so, show the method, including the directions and distances to other public land survey corners used as evidence or used for proportioning in determining the corner location.

I, Ronald Barnes, hereby certify that the corner points as identified by the corner code index were, in a field survey on July 15 1988, established, re-established, monumented, re-monumented, recovered or restored as expressed below and in conformance with the regulations and rules as required in the current manual of survey instructions of the United States Department of Interior, Bureau of Land Management.



COUNTY SURVEYOR FILING DATA
Date of Computer Entry _____
Date Received _____
Date Microfilmed _____
Treasurer's Receipt No. _____
Number of Included Sheets _____

AFFIX YOUR LAND SURVEYOR SEAL. CORNER CODE V13