

U.S. PUBLIC LAND SURVEY MONUMENT RECORD

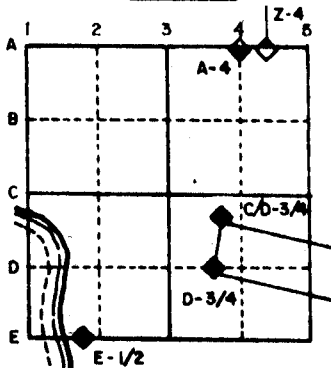
For Public Land Survey Corners in the

T. 3 N., R. 12 E.

CORNER CODE INDEX

	1	2	3	4	5	6	7	8	9	10	11	12	13	14	15	16	17	18	19	20	21	22	23	24	25
A																									
B																									
C																									
D																									
E																									
F																									
G																									
H																									
I																									
J																									
K																									
L																									
M																									
N																									
O																									
P																									
Q																									
R																									
S																									
T																									
U																									
V																									
W																									
X																									
Y																									
Z																									

EXAMPLE



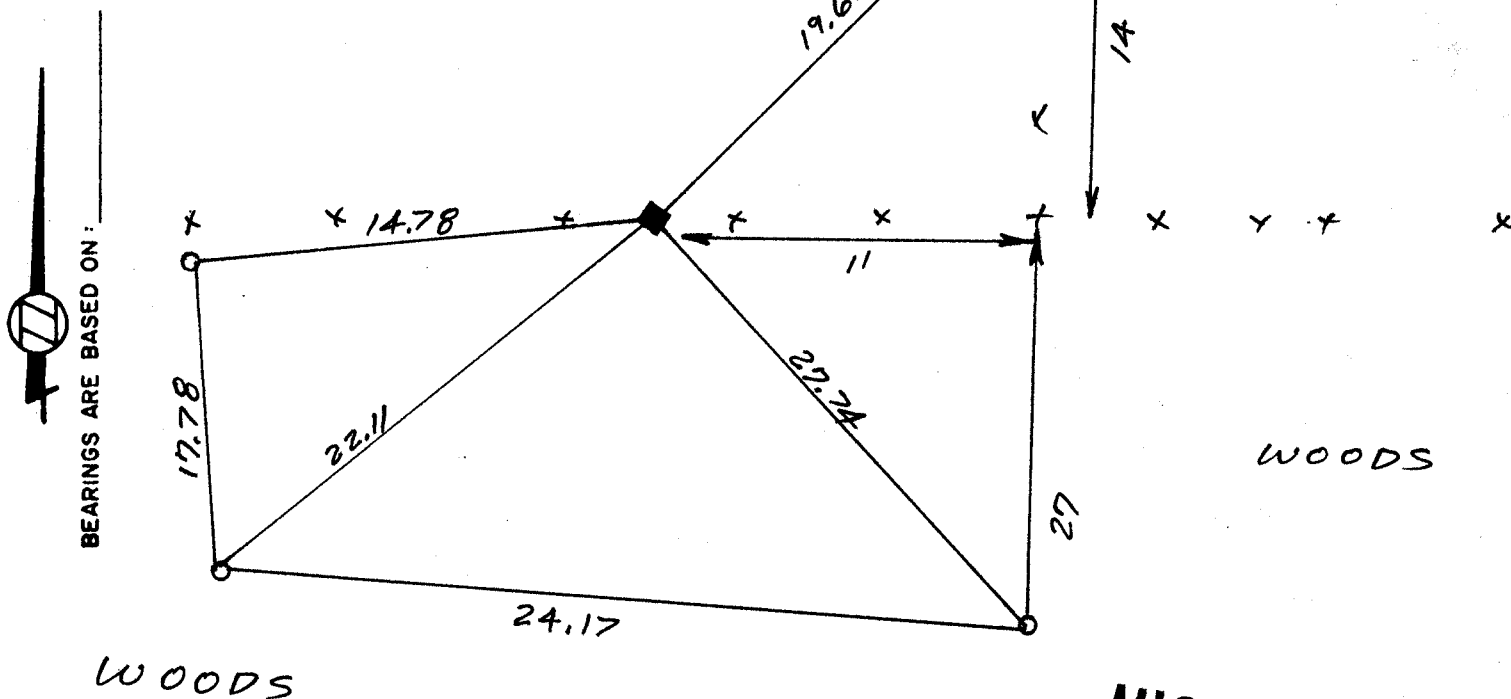
TANESVILLE TWP
ROCK COUNTY WI

IF AVAILABLE
STATE PLANE COORDINATES

North (Y) 278,102.94 Eleve. (Z) _____
 East (X) 2,235,996.61 Zone _____
 Hor. Datum 798.7 Vert. Datum _____

PLACE MONUMENT SYMBOL (◆) AT PROPER LOCATION ON ABOVE INDEX

- (a.) ◆ CORNER MONUMENT
 CONCRETE MONUMENT
 WITH BRASS DISK.
 0.3 ABOVE GROUND
 PLACED WHITE PLASTIC
 POST ON NORTH SIDE OF
 MONUMENT
- WITNESS MONUMENT 1/2 X 2A" RE ROD



FIELD BOOK 1 PAGE # 62

SHOW A PLAN VIEW DRAWING DEPICTING THE CORNER MONUMENT AND SURROUNDING PHYSICAL FEATURES, INCLUDING THE EXCAVATION AREA AND DEPTH. THE CORNER MONUMENT SHALL HAVE THE FOLLOWING CHARACTERISTICS: 1) HAVE AT LEAST TWO PREDETERMINED BREAK-OFF POINTS. 2) IF BROKEN, LEAVE A PERMANENTLY MAGNETIZED REMNANT AT THE ORIGINAL POINT. 3) MUST BE EXTENDABLE. 4) THE CAP IS INSCRIBED: ROCK COUNTY SURVEY MONUMENT - PENALTY FOR DISTURBING MARKER. 5) OR AN EXISTING CUT LIMESTONE. AN IRON PIPE 1 1/2" X 4'0" (MINIMUM) MAY BE USED IN AREAS WHERE GROUND WATER IS WITHIN ONE FOOT OF THE SURFACE. IF THE CORNER IS OCCUPIED BY AN IMPROVEMENT (MANHOLE, BURIED CABLE, ETC.) ANY DURABLE, DISTINCT MONUMENT MAY BE USED. CORNERS SHALL BE REFERENCED WITH AT LEAST 4 DURABLE WITNESS MONUMENTS. WITNESS MONUMENTS SHALL BE MADE OF CONCRETE, NATURAL STONE, IRON OR OTHER EQUALLY DURABLE MATERIAL, EXCEPT WOOD. DESCRIBE THE CORNER AND THE WITNESS MONUMENTS.

CORNER CODE:

A 3

(b.) Describe any record evidence, monument evidence, occupational evidence, testimonial evidence or any other material evidence you considered, and whether the monument was found or placed.

1. 1865 LOCKE USED THE CORNER TO SUBDIVIDE SEC 31 FULTON TWP. HE DID NOT STATE WHAT HE FOUND OR PLACED VOL 1 PG 243
- 2 1869 LEE VOL 2 PG 341 LEE FOUND STUMPS OF OLD BTS & STAKE UNDER FENCE
- 3 1870 RUGER VOL 2 PG 34 FOUND OLD STAKE & W BT & STUMPS OF EAST BT. PLACED IRREGULAR HH 21"X17"X10" POINT UP & SURROUNDED IT WITH 5 SMALL HH
- 4 1873 VOL 2 PG 106 RUGER FOUND STUMP OF BTS & FOUND ON CORNER HH 21"X12"X7" SURROUNDED BY 4 SMALL HH
- 5 1883 VOL 2 PG 364 LEE FOUND BT & STUMP OF BT & STONE AT CORNER
- 6 1934 VOL 3 PG 241 SUNNY FOUND STONE MONUMENT 21"X12"X7" HH SURROUNDED BY 4 HH.
- 7 1966 VOL 4 PG 275 BATTERMAN JR. FOUND HH 21"X12"X7" SURROUNDED BY 4 HH INKED ON THE PAGE WAS A STATEMENT THAT THE HH WAS REPLACED WITH A CONCRETE MONUMENT WITH A BRASS CAP AND DATED 8/30/71
- 8 1968 VOL 4 PG 388 BATTERMAN JR. NOTES THAT HE FOUND THE HH AGAIN.

(c.) Was the corner restored through acceptance of (1) an obliterated evidence location, or, (2) a found perpetuated location?

YES

(d.) Describe any material discrepancy between the location of the corner as restored or reestablished and the location of that corner as previously restored or reestablished by distance and direction. Show the discrepancy on the plan view drawing under (a), above. Show the distances between the corner as previously restored or reestablished and (1) the corner as restored or reestablished, and (2) to at least 4 of the witness monuments shown on the drawing in (a), above.

(e.) Was the corner reestablished through lost corner proportionate methods? If so, show the method, including the directions and distances to other public land survey corners used as evidence or used for proportioning in determining the corner location.

I, Donald Barnes, hereby certify that the corner points as identified by the corner code index were, in a field survey on Feb 26 1987, established, re-established, monumented, re-monumented recovered or restored as expressed below and in conformance with the regulations and rules as required in the current manual of survey instructions of the United States Department of Interior, Bureau of Land Management.

