

U.S. PUBLIC LAND SURVEY MONUMENT RECORD

For Public Land Survey Corners in the

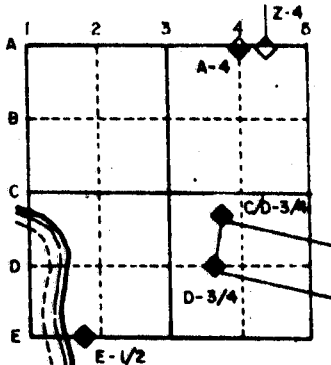
T. 3 N., R. 12 E

CORNER CODE INDEX

	1	2	3	4	5	6	7	8	9	10	11	12	13	14	15	16	17	18	19	20	21	22	23	24	25
A																									
B																									
C																									
D																									
E																									
F																									
G																									
H																									
I																									
J																									
K																									
L																									
M																									
N																									
O																									
P																									
Q																									
R																									
S																									
T																									
U																									
V																									
W																									
X																									
Y																									
Z																									

PLACE MONUMENT SYMBOL (◆) AT PROPER LOCATION ON ABOVE INDEX

EXAMPLE



JANESVILLE TWP
ROCK COUNTY WI

IF AVAILABLE
STATE PLANE COORDINATES

North (Y) 246,173.59 Eleve. (Z) 834.6

East (X) 2,239,213.54 Zone _____

Hor. Datum _____ Vert. Datum _____

246,172.92

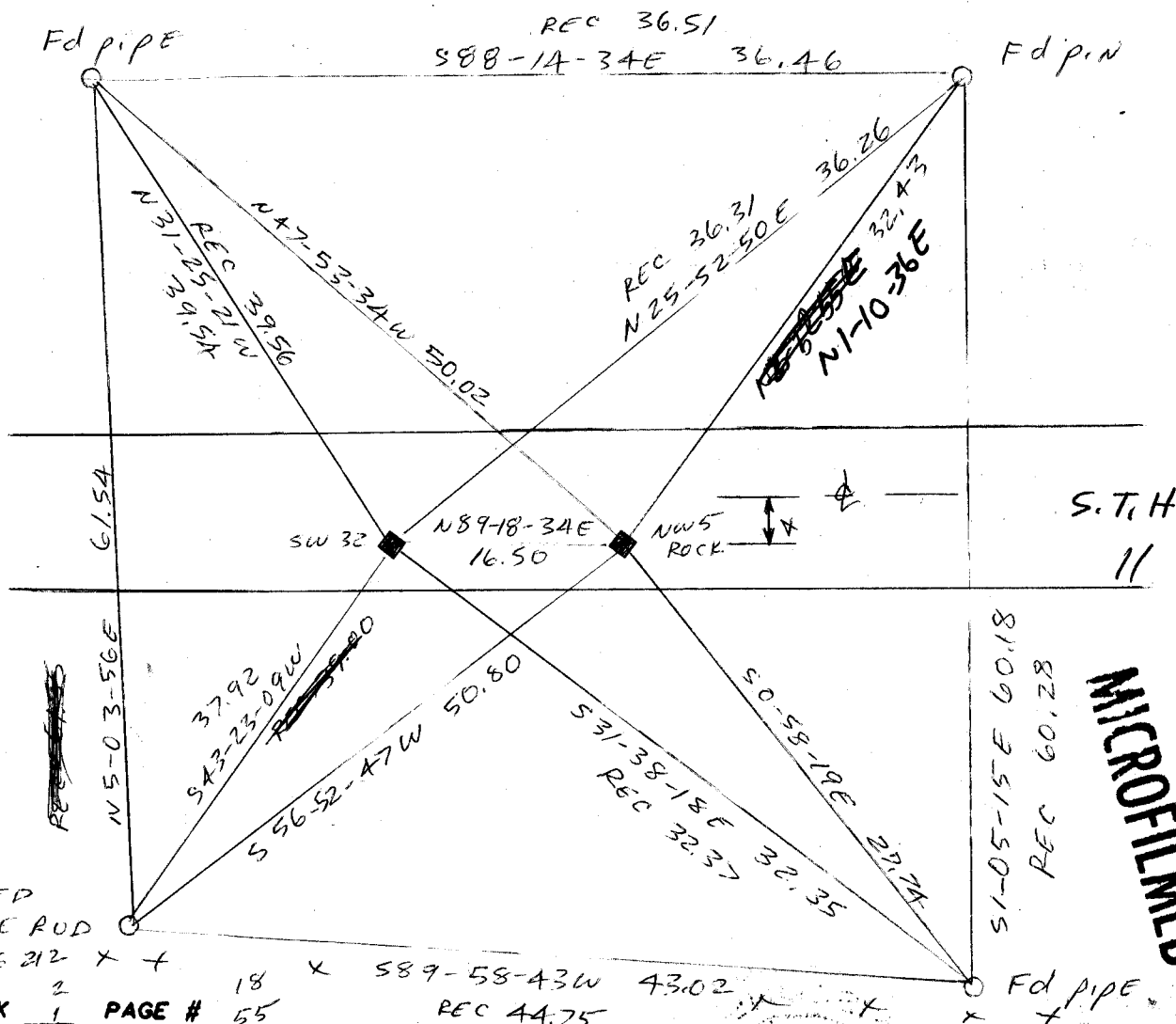
WPL 2,239,213.57

(a.)

◆ CORNER MONUMENT

○ WITNESS MONUMENT

Poly Monument



MICROFILMED

PLACED
1/2 x 2A PE ROD
OLD TIES VAPG 212 X +
FIELD BOOK 1 PAGE # 55

SHOW A PLAN VIEW DRAWING DEPICTING THE CORNER MONUMENT AND SURROUNDING PHYSICAL FEATURES, INCLUDING THE EXCAVATION AREA AND DEPTH. THE CORNER MONUMENT SHALL HAVE THE FOLLOWING CHARACTERISTICS: 1) HAVE AT LEAST TWO PREDETERMINED BREAK-OFF POINTS. 2) IF BROKEN, LEAVE A PERMANENTLY MAGNETIZED REMNANT AT THE ORIGINAL POINT. 3) MUST BE EXTENDABLE. 4) THE CAP IS INSCRIBED: ROCK COUNTY SURVEY MONUMENT - PENALTY FOR DISTURBING MARKER. 5) OR AN EXISTING CUT LIMESTONE. AN IRON PIPE 1 1/2" x 4'0" (MINIMUM) MAY BE USED IN AREAS WHERE GROUND WATER IS WITHIN ONE FOOT OF THE SURFACE. IF THE CORNER IS OCCUPIED BY AN IMPROVEMENT (MANHOLE, BURIED CABLE, ETC.) ANY DURABLE, DISTINCT MONUMENT MAY BE USED. CORNERS SHALL BE REFERENCED WITH AT LEAST 4 DURABLE WITNESS MONUMENTS. WITNESS MONUMENTS SHALL BE MADE OF CONCRETE, NATURAL STONE, IRON OR OTHER EQUALLY DURABLE MATERIAL, EXCEPT WOOD. DESCRIBE THE CORNER AND THE WITNESS MONUMENTS.

CORNER CODE: 25

(b.) Describe any record evidence, monument evidence, occupational evidence, testimonial evidence or any other material evidence you considered, and whether the monument was found or placed.

- 1859 VOL 1 PG 110 RUGER USED THE CORNER TO SUBDIVIDE THE SE 1/4 OF SEC 31 BUT STATES NOTHING ABOUT THE CORNER
- 1859 VOL 1 PG 111 RUGER FOUND OLD WITNESS TREE STANDING
- 1870 VOL 2 PG 43 RUGER FOUND BT
- 1876 VOL 2 PG 214 RUGER PLACED STAKE SURROUNDED BY STONES
- 1881 VOL 2 PG 322 LEE FOUND STAKE & STUMPS OF NE BT AT 8.45 INSTEAD OF 7.45 AS RECORDED NW BT GONE.
- 1965 VOL 4 PG 211 BATTERMAN JR. FOUND POINTED HH SETTING UP NEXT TO RED HH
NW COR SEC 5 ROCK TWP
- 1867 VOL 1 PG 333 LEE FOUND FENCE POST TESTIFIED TO BE CORNER
- 1870 VOL 2 PG 43 RUGER FOUND OLD STAKE 16.50' EAST OF SW CORNER OF SEC 32
- 1881 VOL 2 PG 323 LEE DROVE CEDAR STAKE AT A POINT 16.50' OF SW CORNER OF SEC 31 & SURROUNDED WITH LIMESTONE ON SOUTH, EAST, AND WEST AND HH ON NORTH.

PLACED MONUMENT 16.50 EAST OF THE SW CORNER OF SECTION 32 ON LINE WITH THE SW CORNER & THE S1/4 CORNER OF SECTION 32.

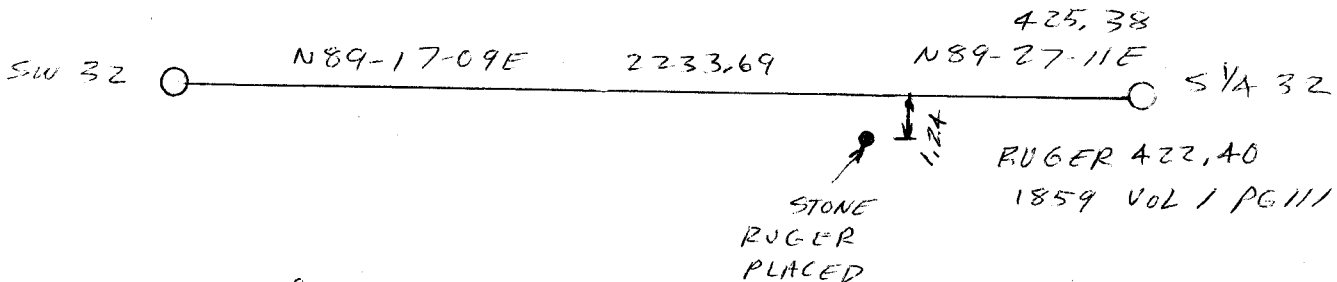
(c.) Was the corner restored through acceptance of (1) an obliterated evidence location, or, (2) a found perpetuated location?

ACCEPTED FOUND MONUMENT BOX WITH 1" PIPE INSIDE. DROVE PIPE DEEP AND PLACED POLY MONUMENT ON TOP. FOUND D.O.T. PK 3.92 NORTH OF CORNER.

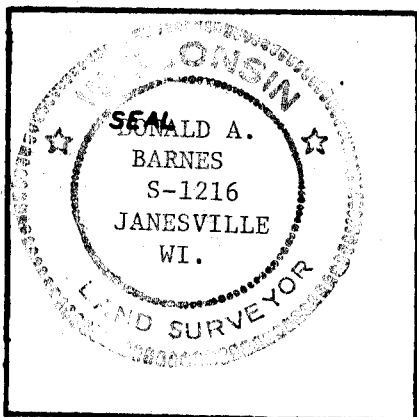
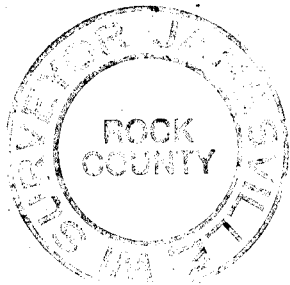
(d.) Describe any material discrepancy between the location of the corner as restored or reestablished and the location of that corner as previously restored or reestablished by distance and direction. Show the discrepancy on the plan view drawing under (c), above. Show the distances between the corner as previously restored or reestablished and (1) the corner as restored or reestablished, and (2) to at least 4 of the witness monuments shown on the drawing in (c), above.

(e.) Was the corner reestablished through lost corner proportionate methods? If so, show the method, including the directions and distances to other public land survey corners used as evidence or used for proportioning in determining the corner location.

NO



I, Donald Barnes, hereby certify that the corner points as identified by the corner code index were, in a field survey on July 21 1987, established, re-established, monumented, re-monumented, recovered or restored as expressed below and in conformance with the regulations and rules as required in the current manual of survey instructions of the United States Department of Interior, Bureau of Land Management.



COUNTY SURVEYOR FILING DATA

Date of Computer Entry _____

Date Received _____

Date Microfilmed _____

Treasurer's Receipt No. _____

Number of Included Sheets _____

AFFIX YOUR LAND SURVEYOR SEAL. CORNER CODE 25