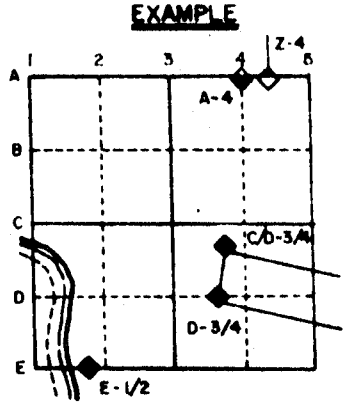


U.S. PUBLIC LAND SURVEY MONUMENT RECORD

For Public Land Survey Corners in the
T. 3 N., R. 12 E.

CORNER CODE INDEX

| | | | | | | | | | | | | | | | | | | | | | | | | |
|---|----|----|----|----|----|----|----|----|----|----|----|----|----|----|----|----|----|----|----|----|----|----|----|----|
| | 2 | 3 | 4 | 5 | 6 | 7 | 8 | 9 | 10 | 11 | 12 | 13 | 14 | 15 | 16 | 17 | 18 | 19 | 20 | 21 | 22 | 23 | 24 | 25 |
| A | | | | | | | | | | | | | | | | | | | | | | | | |
| B | | | | | | | | | | | | | | | | | | | | | | | | |
| C | 6 | | | | | | | | | | | | | | | | | | | | | | | |
| D | | 5 | | | | | | | | | | | | | | | | | | | | | | |
| E | | | 4 | | | | | | | | | | | | | | | | | | | | | |
| F | | | | 3 | | | | | | | | | | | | | | | | | | | | |
| G | | | | | 2 | | | | | | | | | | | | | | | | | | | |
| H | | | | | | | | | | | | | | | | | | | | | | | | |
| I | 7 | | | | | | | | | | | | | | | | | | | | | | | |
| J | | 8 | | | | | | | | | | | | | | | | | | | | | | |
| K | | | 9 | | | | | | | | | | | | | | | | | | | | | |
| L | | | | 10 | | | | | | | | | | | | | | | | | | | | |
| M | | | | | 11 | | | | | | | | | | | | | | | | | | | |
| N | | | | | | 12 | | | | | | | | | | | | | | | | | | |
| O | | | | | | | 13 | | | | | | | | | | | | | | | | | |
| P | 18 | | | | | | | | | | | | | | | | | | | | | | | |
| Q | | 17 | | | | | | | | | | | | | | | | | | | | | | |
| R | | | 16 | | | | | | | | | | | | | | | | | | | | | |
| S | | | | 15 | | | | | | | | | | | | | | | | | | | | |
| T | | | | | 14 | | | | | | | | | | | | | | | | | | | |
| U | | | | | | 13 | | | | | | | | | | | | | | | | | | |
| V | | | | | | | 12 | | | | | | | | | | | | | | | | | |
| W | | | | | | | | 11 | | | | | | | | | | | | | | | | |
| X | | | | | | | | | 10 | | | | | | | | | | | | | | | |
| Y | | | | | | | | | | 9 | | | | | | | | | | | | | | |
| Z | | | | | | | | | | | 8 | | | | | | | | | | | | | |
| | | | | | | | | | | | | 7 | | | | | | | | | | | | |
| | | | | | | | | | | | | | 6 | | | | | | | | | | | |
| | | | | | | | | | | | | | | 5 | | | | | | | | | | |
| | | | | | | | | | | | | | | | 4 | | | | | | | | | |
| | | | | | | | | | | | | | | | | 3 | | | | | | | | |
| | | | | | | | | | | | | | | | | | 2 | | | | | | | |
| | | | | | | | | | | | | | | | | | | 1 | | | | | | |



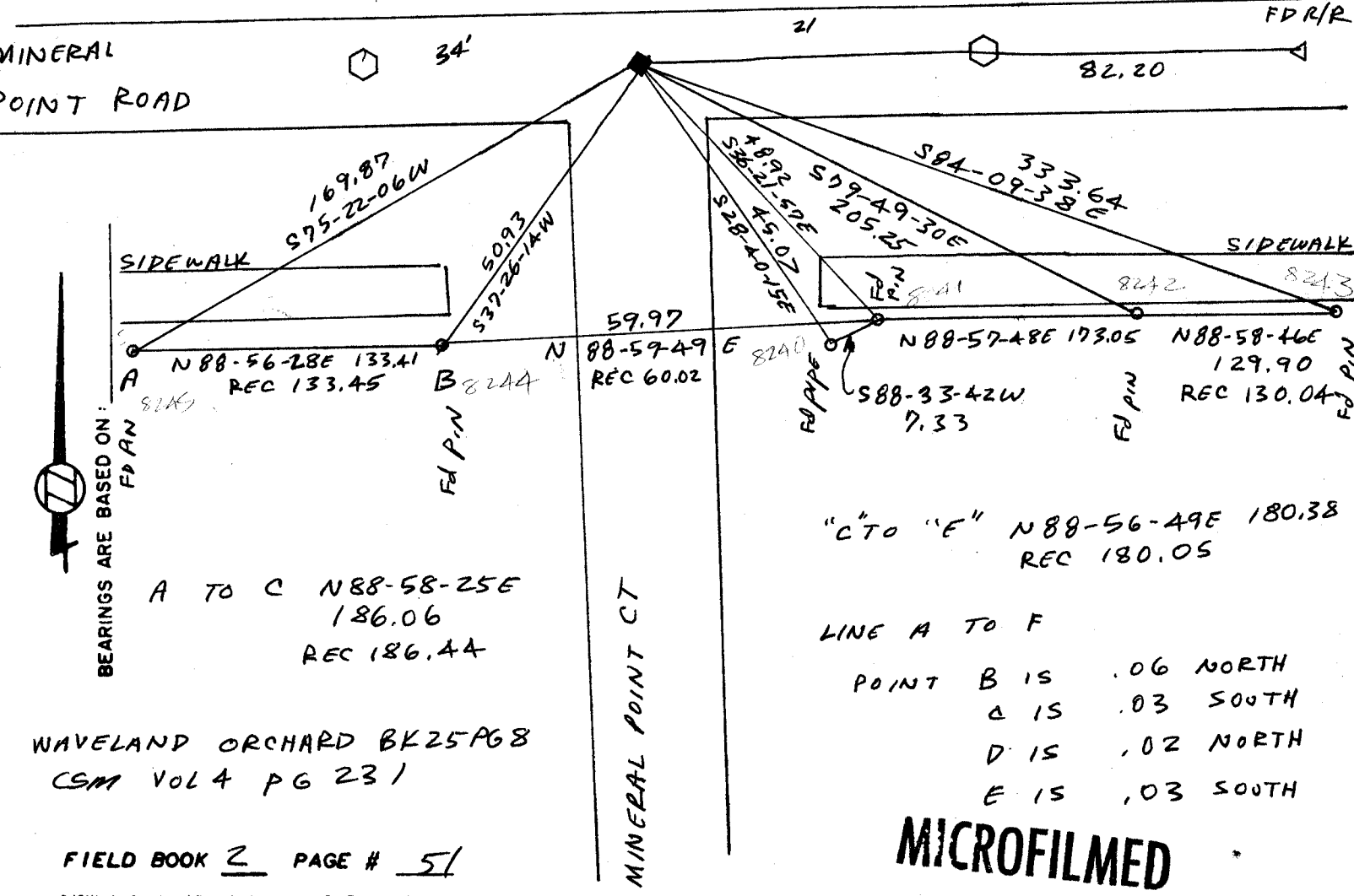
JANESVILLE TWP
ROCK COUNTY WI

IF AVAILABLE
 STATE PLANE COORDINATES

North (Y) 251,607.27 Eleve. (Z) _____
 East (X) 2,252,276.63 Zone _____
 Hor. Datum _____ Vert. Datum _____

PLACE MONUMENT SYMBOL (◆) AT PROPER LOCATION ON ABOVE INDEX

- (a.) ◆ CORNER MONUMENT ○ WITNESS MONUMENT
 ⬡ SANITARY MANHOLE



MICROFILMED

SHOW A PLAN VIEW DRAWING DEPICTING THE CORNER MONUMENT AND SURROUNDING PHYSICAL FEATURES, INCLUDING THE EXCAVATION AREA AND DEPTH. THE CORNER MONUMENT SHALL HAVE THE FOLLOWING CHARACTERISTICS: 1) HAVE AT LEAST TWO PREDETERMINED BREAK-OFF POINTS. 2) IF BROKEN, LEAVE A PERMANENTLY MAGNETIZED REMNANT AT THE ORIGINAL POINT. 3) MUST BE EXTENDABLE. 4) THE CAP IS INSCRIBED: ROCK COUNTY SURVEY MONUMENT - PENALTY FOR DISTURBING MARKER. 5) OR AN EXISTING CUT LIMESTONE. AN IRON PIPE 1 1/2" x 4'0" (MINIMUM) MAY BE USED IN AREAS WHERE GROUND WATER IS WITHIN ONE FOOT OF THE SURFACE. IF THE CORNER IS OCCUPIED BY AN IMPROVEMENT (MANHOLE, BURIED CABLE, ETC.) ANY DURABLE, DISTINCT MONUMENT MAY BE USED. CORNERS SHALL BE REFERENCED WITH AT LEAST 4 DURABLE WITNESS MONUMENTS. WITNESS MONUMENTS SHALL BE MADE OF CONCRETE, NATURAL STONE, IRON OR OTHER EQUALLY DURABLE MATERIAL, EXCEPT WOOD. DESCRIBE THE CORNER AND THE WITNESS MONUMENTS.

CORNER CODE: V 15

(b.) Describe any record evidence, monument evidence, occupational evidence, testimonial evidence or any other material evidence you considered, and whether the monument was found or placed.

SEE SHEET 2

(c.) Was the corner restored through acceptance of (1) an obliterated evidence location, or, (2) a found perpetuated location?

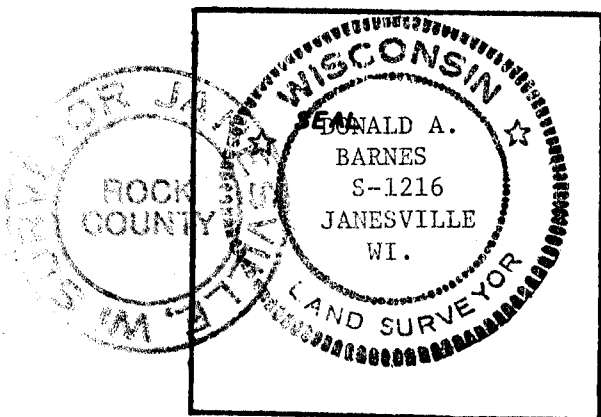
SEE SHEET 2

(d.) Describe any material discrepancy between the location of the corner as restored or reestablished and the location of that corner as previously restored or reestablished by distance and direction. Show the discrepancy on the plan view drawing under (d), above. Show the distances between the corner as previously restored or reestablished and (1) the corner as restored or reestablished, and (2) to at least 4 of the witness monuments shown on the drawing in (d), above.

(e.) Was the corner reestablished through lost corner proportionate methods? If so, show the method, including the directions and distances to other public land survey corners used as evidence or used for proportioning in determining the corner location.

NO

I, Donald Barnes, hereby certify that the corner points as identified by the corner code index were, in a field survey on July 15 1988, established, re-established, monumented, re-monumented, recovered or restored as expressed below and in conformance with the regulations and rules as required in the current manual of survey instructions of the United States Department of Interior, Bureau of Land Management.



COUNTY SURVEYOR FILING DATA

Date of Computer Entry _____

Date Received _____

Date Microfilmed _____

Treasurer's Receipt No. _____

Number of Included Sheets 2

AFFIX YOUR LAND SURVEYOR SEAL. CORNER CODE V15

(b) Describe any record evidence, monument evidence, occupational evidence, testimonial evidence or any other material evidence you considered, and whether the monument was found or placed.

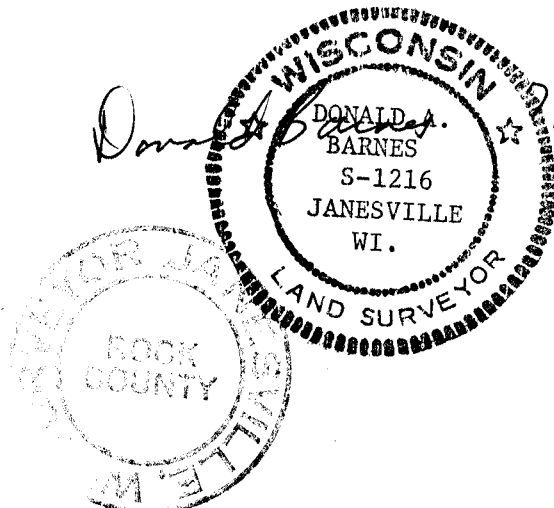
- 1866 LOCKE VOL 1 PG 271 CORNER LOST. COULD NOT FIND N.W. CORNER SEC- A.B. MILLER RAN THE N. LINE OF SECTION AND FENCES (HIGHWAY) WERE BUILT BY HIS SURVEY AND ARE 4 RODS APART. TOOK CENTER OF HIGHWAY. SHOWS THAT CORNER WAS PLACED EQUAL DISTANCE BETWEEN THE SW AND SE CORNERS OF SECTION 27.
- 1882 RUGER VOL 2 PG 399 FOUND CORNER SET BY SELF- LIMESTONE SURROUNDED BY 4 HHs-SET ON TOP LIMESTONE 18 x 8 X 5 & PUT HHs ON N & S SIDES.
- 1961 BATTERMAN VOL 4 PG 242 SHOWS REFERENCE MONUMENTS BUT DOES NOT STATE WHAT WAS FOUND OR PLACED.
- 1966 BATTERMAN VOL 4 PG 243 R.R. SPIKE SET BY R.L. THOM FROM REFERENCES SEE PG 242 VOLUME 4. BATTERMAN SHOWS A DISTANCE OF 1333.06 FROM THE SW CORNER TO THE E 1/16th CORNER OF THE SW QUARTER AND A DISTANCE OF 1333.06 FROM THAT CORNER TO THE SOUTH QUARTER CORNER OF SECTION 27.
- 1970 KAKUSKE "WAVELAND ORCHARD" BK 25 PG 8 LEGEND SHOWS A PIPE.
- 1973 KNOERR "SECOND WAVELAND ORCHARD" BK 18 PG 18. LEGEND SHOWS AN EXISTING 2" PIPE AND A DISTANCE TO THE 1/16th CORNER THAT IS SOUTH.
- 1973 COMBS "ARNPRIOR ESTATES" BK 26 PG 17 LEGEND SHOWS THAT A 2" PIPE WAS FOUND.
- 1976 COMBS "WAVELAND ORCHARD" BK 28 PG 16 LEGEND SHOWS THAT A PIPE WAS SET.
- 1978 COMBS "NORTHWAVELAND ORCHARD" BK 29 PG 15. LEGEND SHOWS THAT A 1 1/4" PIPE WAS SET.
- 1984 COMBS "HAMILTON HEIGHTS FIRST ADDITION" BK 32 PG 16 LEGEND SHOWS THAT A PK NAIL WAS FOUND.
- I FOUND BELOW THE FOUND PK, PART OF A CAST IRON MONUMENT. THE MONUMENT IS ON LINE WITH TWO SANITARY MANHOLE COVERS. REPLACED CAST IRON MONUMENT WITH POLY MONUMENT.

(C) Was the corner restored through acceptance of (1) an obliterated evidence location, or, (2) a found perpetuated location?

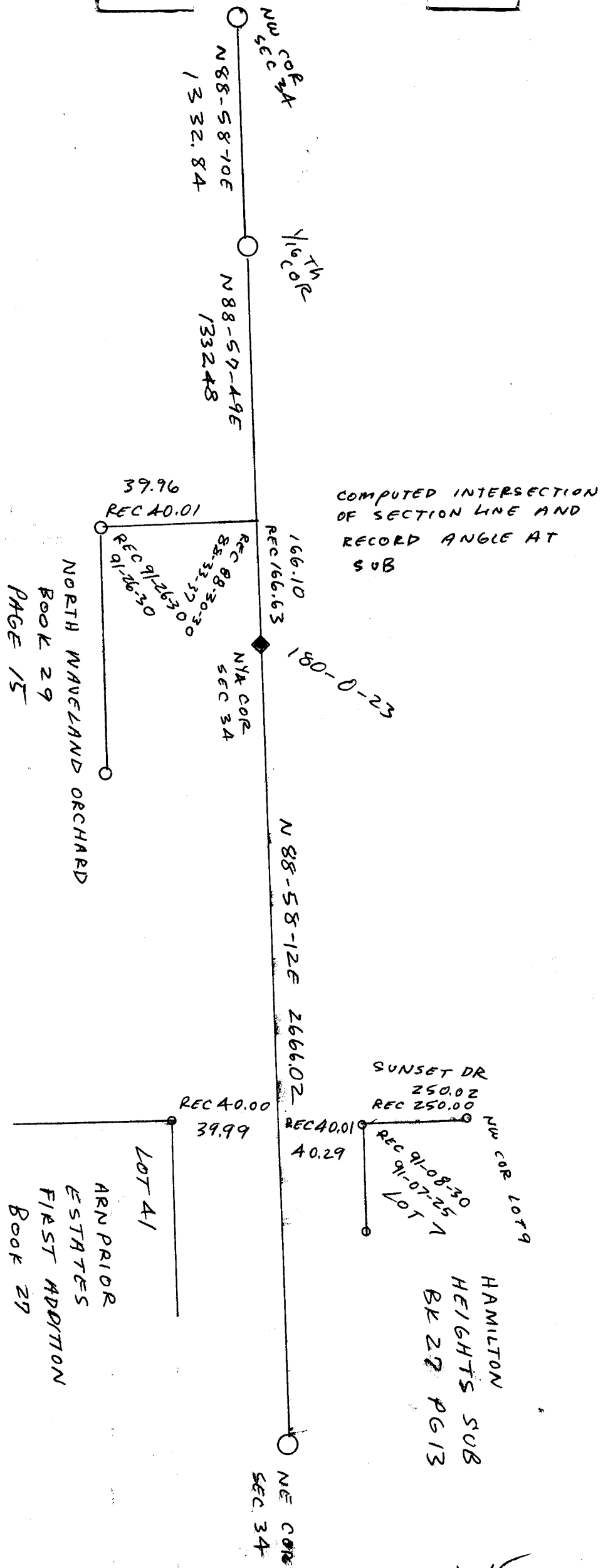
I ACCEPTED THE FOUND PART OF THE CAST IRON MONUMENT.

(d) Describe any material discrepancy between the location of the corner as restored or reestablished and the location of that corner as previously restored or reestablished by distance and direction. Show the discrepancy on the plan view drawing under (a) above. Show the distances between the corner as previously restored or reestablished and (1) the corner as restored or reestablished, and (2) to a least 4 of the witness monuments shown on the drawing in (a), on the revise side.

NONE



V15

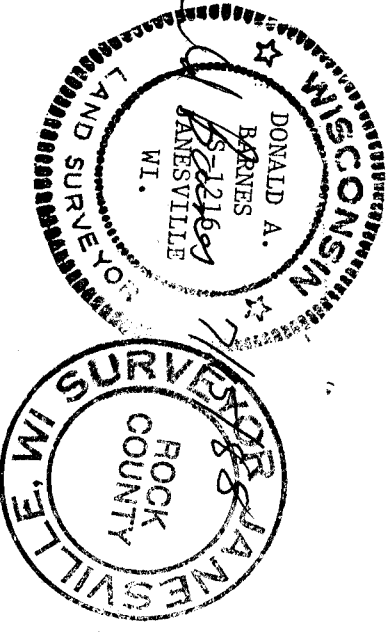


COMPUTED INTERSECTION
OF SECTION LINE AND
RECORD ANGLE AT
SUB

NORTH WAVELAND ORCHARD
BOOK 29
PAGE 15

LOT 41
ARN PRIOR
ESTATES
FIRST ADDITION
BOOK 29
PAGE 34

HAMILTON
HEIGHTS SUB
BK 27 PG 13



V 15