

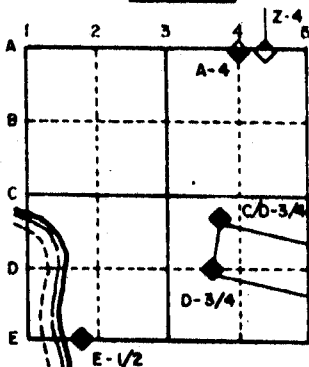
U.S. PUBLIC LAND SURVEY MONUMENT RECORD

For Public Land Survey Corners in the
T. 3 N., R. 12 E.

CORNER CODE INDEX

	2	3	4	5	6	7	8	9	10	11	12	13	14	15	16	17	18	19	20	21	22	23	24	25
A																								
B																								
C																								
D																								
E																								
F																								
G																								
H																								
I																								
J																								
K																								
L																								
M																								
N																								
O																								
P																								
Q																								
R																								
S																								
T																								
U																								
V																								
W																								
X																								
Y																								
Z																								

EXAMPLE



JANESVILLE TWP
ROCK COUNTY WI

IF AVAILABLE
STATE PLANE COORDINATES

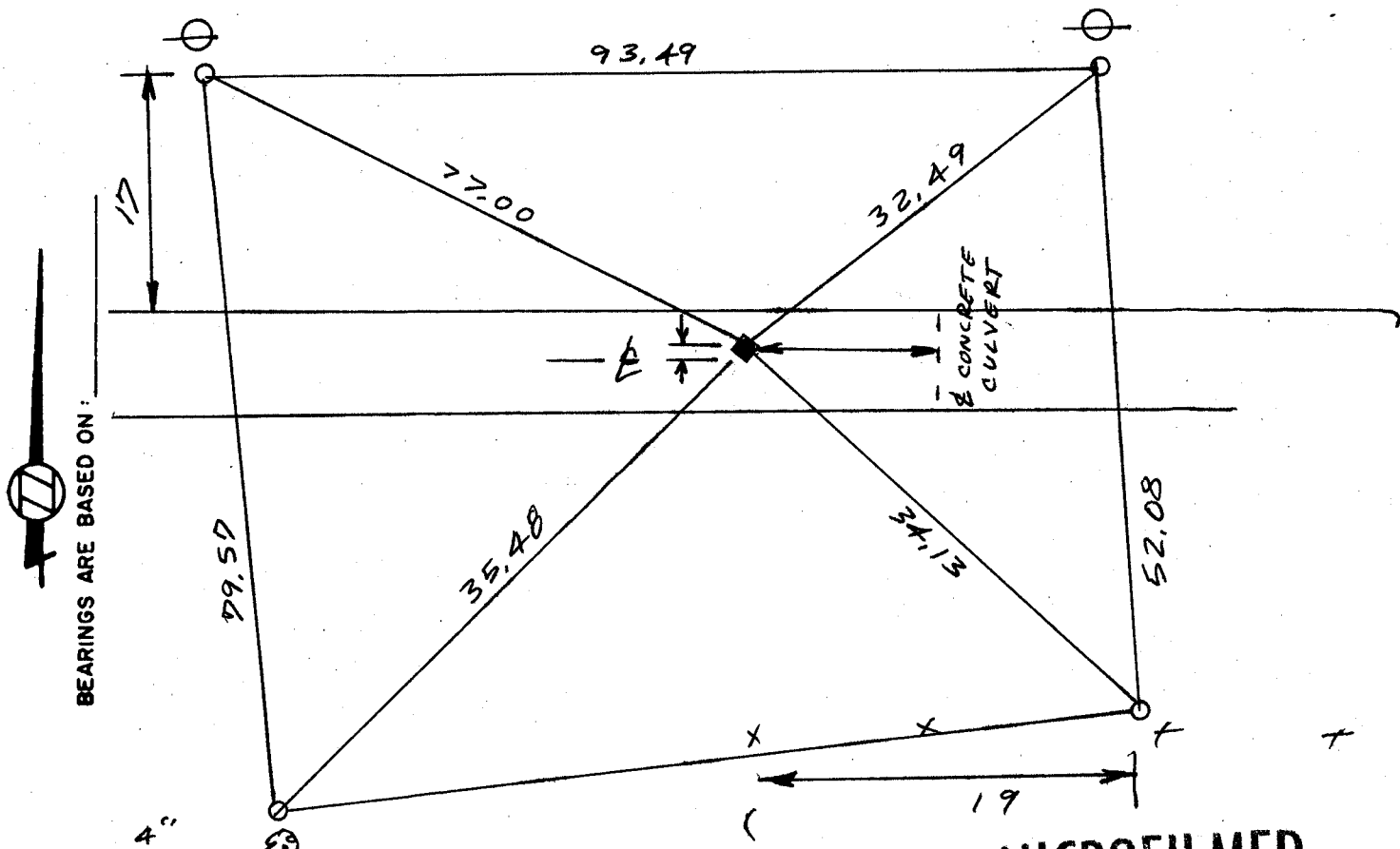
North (Y) 251,495.30 Elevation (Z) 890.42

East (X) 2,238,965.58 Zone _____

Hor. Datum _____ Vert. Datum _____

PLACE MONUMENT SYMBOL (◆) AT PROPER WPL 251,494.96
LOCATION ON ABOVE INDEX 2,238,965.51

- (a) **◆ CORNER MONUMENT** **○ WITNESS MONUMENT** **Y2 X 2A" REBOD**
- Fd 1" pipe in monument box*
- Placed poly mon*



(b.) Describe any record evidence, monument evidence, occupational evidence, testimonial evidence or any other material evidence you considered, and whether the monument was found or placed.

1860 RUGER VOL 1 PG 136 USED THE CORNER TO SET THE E 1/4 CORNER OF SECTION 30 BUT STATES NOTHING ABOUT THE CORNER.

1980 BARNES VOL 6 PG 109 FOUND 1" PIPE IN MON BOX AND SHOWS DISTANCES TO IT.

FOUND 1" PIPE IN MONUMENT BOX. DROVE DEEP AND PLACED POLY MONUMENT ON TOP.

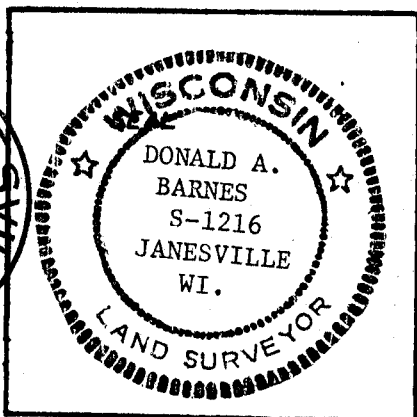
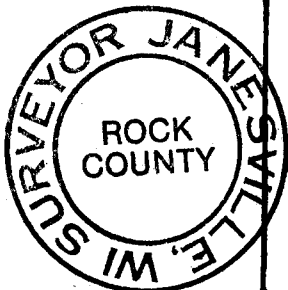
(c.) Was the corner restored through acceptance of (1) an obliterated evidence location, or, (2) a found perpetuated location?

ACCEPTED SOUND PERPETUATED LOCATION.

(d.) Describe any material discrepancy between the location of the corner as restored or reestablished and the location of that corner as previously restored or reestablished by distance and direction. Show the discrepancy on the plan view drawing under (a), above. Show the distances between the corner as previously restored or reestablished and (1) the corner as restored or reestablished, and (2) to at least 4 of the witness monuments shown on the drawing in (a), above.

(e.) Was the corner reestablished through lost corner proportionate methods? If so, show the method, including the directions and distances to other public land survey corners used as evidence or used for proportioning in determining the corner location.

I, Donald Barnes, hereby certify that the corner points as identified by the corner code index were, in a field survey on SEPTEMBER 1988 established, re-established, monumented, re-monumented, recovered or restored as expressed below and in conformance with the regulations and rules as required in the current manual of survey instructions of the United States Department of Interior, Bureau of Land Management.



COUNTY SURVEYOR FILING DATA

Date of Computer Entry _____

Date Received _____

Date Microfilmed _____

Treasurer's Receipt No. _____

Number of Included Sheets _____

AFFIX YOUR LAND SURVEYOR SEAL. CORNER CODE V 5