

U.S. PUBLIC LAND SURVEY MONUMENT RECORD

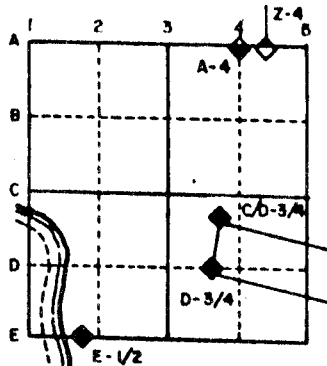
For Public Land Survey Corners in the
T. 3 N., R. 12 E.

CORNER CODE INDEX

	1	2	3	4	5	6	7	8	9	10	11	12	13	14	15	16	17	18	19	20	21	22	23	24	25	
A																										
B																										
C																										
D																										
E																										
F																										
G																										
H																										
I																										
J																										
K																										
L																										
M																										
N																										
O																										
P																										
Q																										
R																										
S																										
T																										
U																										
V																										
W																										
X																										
Y																										
Z																										

PLACE MONUMENT SYMBOL (◆) AT PROPER LOCATION ON ABOVE INDEX

EXAMPLE



JANESVILLE TWP
ROCK COUNTY WI

IF AVAILABLE
STATE PLANE COORDINATES

North (Y) _____ Eleve. (Z) _____
 East (X) _____ Zone _____
 Hor. Datum _____ Vert. Datum _____

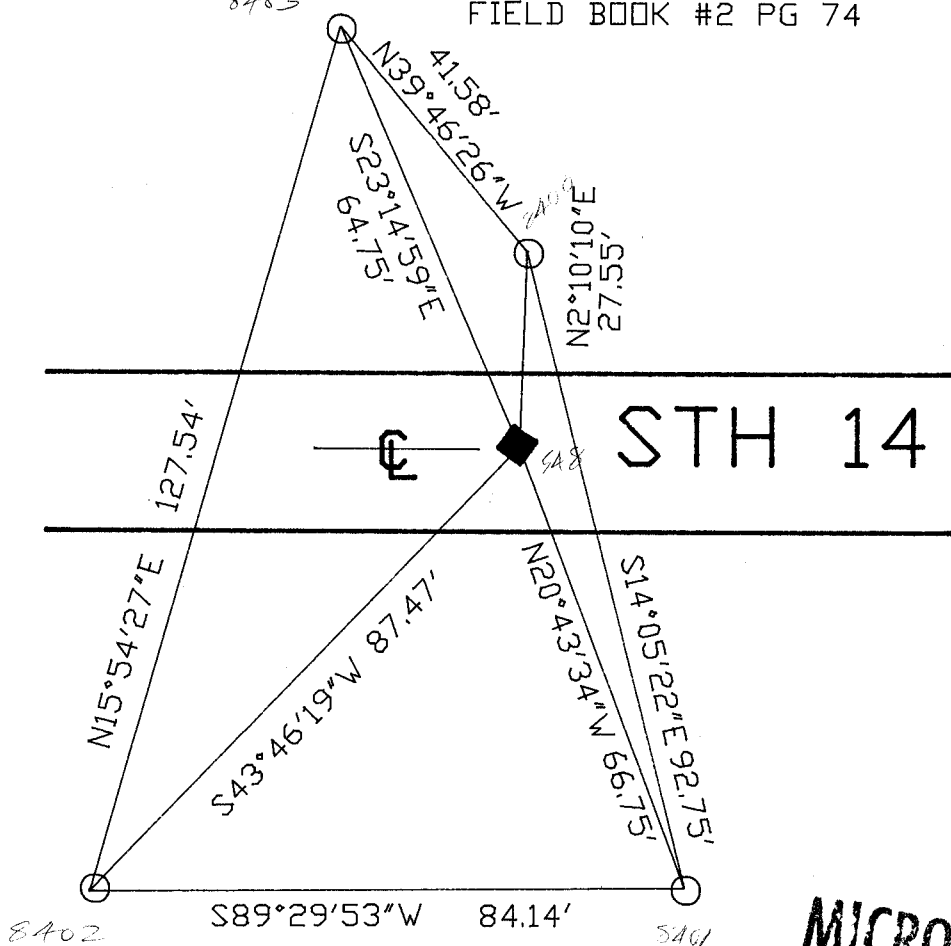
(a.)

- ◆ CORNER MONUMENT
- WITNESS MONUMENT
- 3/4X24 REROD WITH RED PLASTIC CAP
- ◆ PLACED NOTHING

8403

FIELD BOOK #2 PG 74

BEARINGS ARE BASED ON:



MICROFILMED

FIELD BOOK _____ PAGE # _____

SHOW A PLAN VIEW DRAWING DEPICTING THE CORNER MONUMENT AND SURROUNDING PHYSICAL FEATURES, INCLUDING THE EXCAVATION AREA AND DEPTH. THE CORNER MONUMENT SHALL HAVE THE FOLLOWING CHARACTERISTICS: 1) HAVE AT LEAST TWO PREDETERMINED BREAK-OFF POINTS. 2) IF BROKEN, LEAVE A PERMANENTLY MAGNETIZED REMNANT AT THE ORIGINAL POINT. 3) MUST BE EXTENDABLE. 4) THE CAP IS INSCRIBED: ROCK COUNTY SURVEY MONUMENT - PENALTY FOR DISTURBING MARKER. 5) OR AN EXISTING CUT LIMESTONE. AN IRON PIPE 1 1/2" x 4'0" (MINIMUM) MAY BE USED IN AREAS WHERE GROUND WATER IS WITHIN ONE FOOT OF THE SURFACE. IF THE CORNER IS OCCUPIED BY AN IMPROVEMENT (MANHOLE, BURIED CABLE, ETC.) ANY DURABLE, DISTINCT MONUMENT MAY BE USED. CORNERS SHALL BE REFERENCED WITH AT LEAST 4 DURABLE WITNESS MONUMENTS. WITNESS MONUMENTS SHALL BE MADE OF CONCRETE, NATURAL STONE, IRON OR OTHER EQUALLY DURABLE MATERIAL, EXCEPT WOOD. DESCRIBE THE CORNER AND THE WITNESS MONUMENTS.

CORNER CODE:

515

(B) Describe any record evidence, monument evidence, occult evidence, testimonial evidence or any other material evidence you considered, and whether the monument was found or placed.

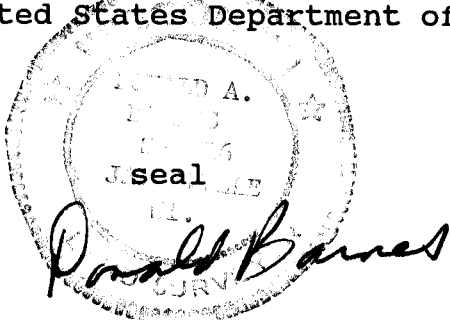
- 1833 LYON, ORSON - DECEMBER 16 ;LEAVE TIMBER & SET QUARTER SEC COR IN TIMBER. BURR OAK 12 N53E 65.34'; BURR OAK 10 S21E 60.06'; MARKED BURR OAK 12 & BURR OAK 10. 2640 TO SW CORNER OF SECTION 10 & 768.24 TO MEANDER POST ON RIGHT BANK OF ROCK RIVER. CALLS FOR A RIVER WIDTH OF 389.4 & 1438.8 FROM MEANDER POST ON LEFT BANK OF ROCK RIVER TO THE SE CORNER OF SECTION 10. ANOTHER PAGE OF FIELD NOTES CALL FOR THE WIDTH OF THE RIVER AS 388.74'.
- 1858 TOWNSHIP ROAD RECORDS. BOOK #1 PG 280. CALLS FOR A 4 ROD ROAD WITH THE CENTER BEING THE SECTION LINE.
- 1859 RUGER VOL 1 PG 101 PUT IN POST BY OLD WITNESS TREES SURROUNDED POST BY 4 HARDHEADS. 2653.86 TO NW CORNER OF SECTION 15 VAR 6-30, VAR 8-10 TO NW CORNER OF SECTION 15, AND VAR 7-45 TO SOUTH QUARTER CORNER OF SECTION 15. AT N 1/16th CORNER OF NW 1/4 OF SECTION 15 FOUND POST WHICH WAS CORRECT WITH STONE SOUTH.
- 1869 RUGER VOL 2 PG 12 CORNER SET BY SELF IN A FORMER SURVEY . SEE COUNTY SURVEYORS RECORD BOOK #1. CALLS FOR 2 MONUMENTS ON LINE WITH THE SW CORNER OF SECTION 10.
- 1869 RUGER VOL 2 PG 11 CORNER ESTABLISHED BY SELF IN A PREVIOUS SURVEY SEE COUNTY SURVEYOR'S RECORD BOOK #1. CALLS FOR 2644.46 TO THE CENTER OF SECTION 15 AND 5288.91 TO THE SOUTH QUARTER CORNER OF SECTION 15. THE CENTER WAS PLACED AT EQUAL DISTANCE FROM THE NORTH AND SOUTH QUARTER CORNERS OF SECTION 15.
- 1869 LEE VOL 1 PG 340 FOUND CORNER SET BY RUGER.
- 1936 SUNNY VOL 3 PG 303 DUG LARGE HOLE. FOUND NOTHING. ROAD CUT DOWN 2'+/- BELOW ORIGINAL SOIL.
- 1938 SUNNY VOL 3 PG 381 SHOWS THE CORNER ON LINE WITH N/S FENCE AND IN CENTER OF ROAD. USED FOR SURVEYS ALONG ROCK RIVER IN SECTION 15.
- 1976 BARNES VOL 5 PG 211 CORNER DESTROYED BY ROAD CONSTRUCTION & RESET BY SUNNY. SHOWS SCALED DISTANCES OFF CITY PHOTOS.

SEARCHED ROAD SURFACE AND FOUND NOTHING. DID NOT DIG BECAUSE OF SUNNY'S STATEMENT IN VOLUME 3 PG 331.

C) Was the corner restored through acceptance of (1) an obliterated evidence location, or, (2) a found perpetuated location?
ACCEPTED OBLITERATED EVIDENCE LOCATION. USED THE CENTER OF THE PAVEMENT AS CALLED FOR BY THE TOWN ROAD RECORDS AND RUGER TO CONTROL N/S DIRECTION. PRORATED WITH ORIGINAL GOVERNMENT SURVEY FOR E/W POSITION. FROM THE SW CORNER OF SECTION 10 TO THE QUARTER CORNER OF SECTION 10 THE BEARING AND DISTANCE IS N89-47-57E 2650.54 AND FROM THE QUARTER CORNER TO THE SE CORNER IT IS N88-51-28E 2606.80.

D) Describe any material discrepancy between the location of the corner as restored or reestablished and the location of that corner as previously restored or reestablished by distance and direction. Show the discrepancy on the plan view drawing under (a), above. Show the distances between the corner as previously restored or reestablished and (1) the corner as restored or reestablished, and (2) to at least 4 of the witness monuments shown on the drawing in (a), above.

Donald Barnes, hereby certify that the corner points as identified by the corner code index were, in a field survey on, July 27, 1992, established, re-established, monumented, re-monumented, recovered or restored as expressed below and in conformance with the regulations and rules as required in the current manual of survey instructions of the United States Department of Interior, Bureau of Land Management.



COUNTY SURVEYOR FILING DATA

Date of computer entry _____

Date microfilmed _____

Number of included sheets _____
CORNER CODE

AFFIX YOUR LAND SURVEYOR SEAL