

U.S. PUBLIC LAND SURVEY MONUMENT RECORD

For Public Land Survey Corners in the

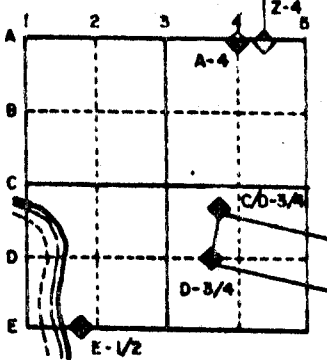
T. 3 N., R. 12 E.

CORNER CODE INDEX

	1	2	3	4	5	6	7	8	9	10	11	12	13	14	15	16	17	18	19	20	21	22	23	24	25
A																									
B																									
C	6																								
D																									
E																									
F																									
G	7																								
H																									
I																									
J																									
K																									
L	18																								
M																									
N																									
O																									
P	19																								
Q																									
R																									
S																									
T	30																								
U																									
V																									
W																									
X	31																								
Y																									
Z																									

PLACE MONUMENT SYMBOL (◆) AT PROPER LOCATION ON ABOVE INDEX

EXAMPLE



JANESVILLE TWP
ROCK COUNTY WI

IF AVAILABLE
STATE PLANE COORDINATES

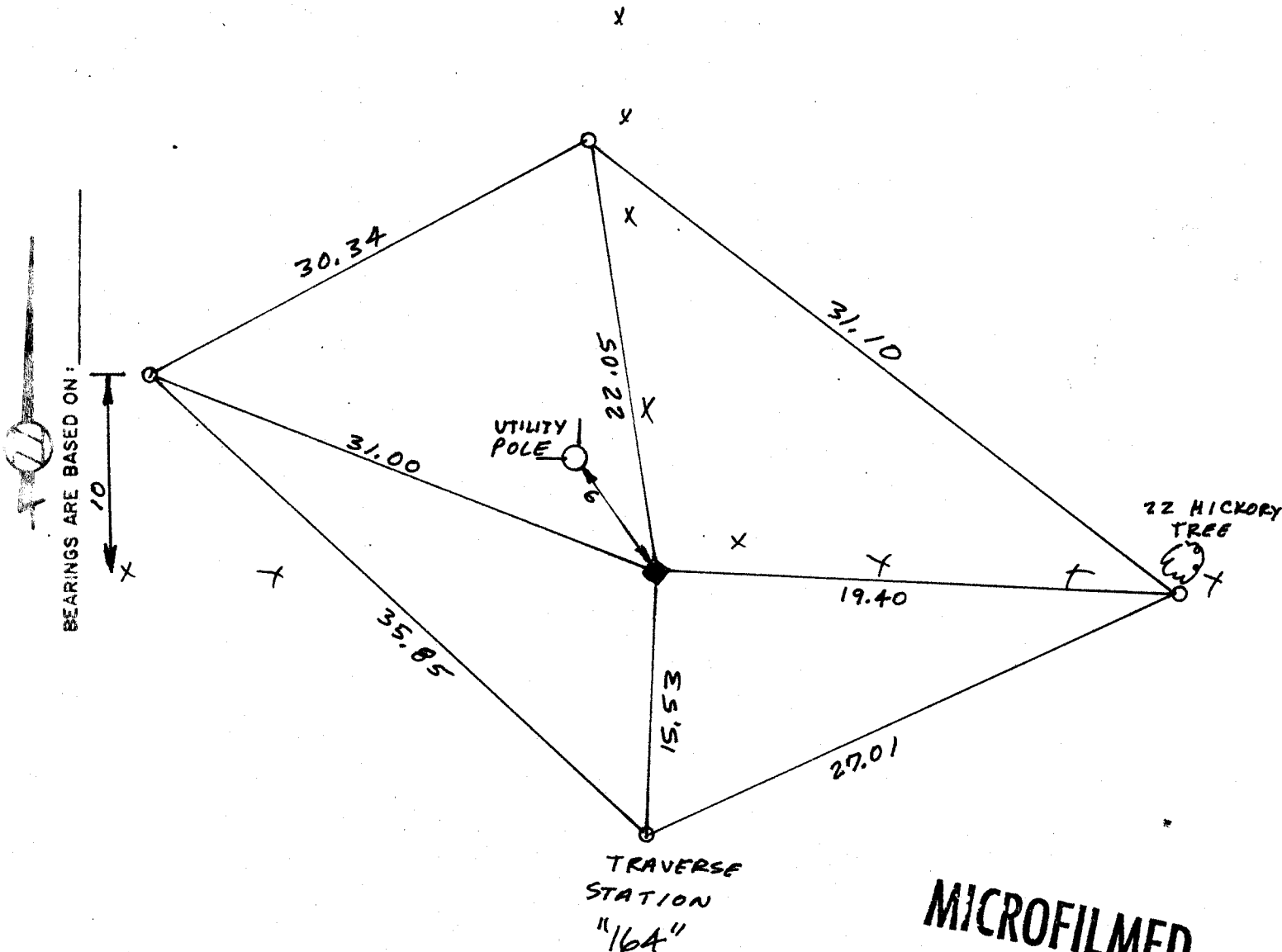
North (Y) 272,871.44 Eleve. (Z) _____

East (X) 2,251,828.50 Zone _____

Hor. Datum 925 Vert. Datum _____

(a.) ◆ CORNER MONUMENT ○ WITNESS MONUMENT 1/2 X 24 RE-ROD

Poly MON WITH YELLOW CARSONITE ON NORTH SIDE



MICROFILMED

- (b.) Describe any record evidence, monument evidence, occupational evidence, testimonial evidence or any other material evidence you considered, and whether the monument was found or placed.
- 1870 RUGER VOL 2 PG 18 FOUND NORTH BT & STUMP OF SOUTH BT SET LIMESTONE 18"X5X5"
 1878 RUGER VOL 2 PG 24 USED CORNER FOR SUBDIVIDING SECTION 3
 1901 KERCH VOL 3 PG 2 FOUND STONE 5X5X- NW BT STANDING
 1921 ELY VOL 3 PG 110 FOUND STONE 5"X6" 195' SOUTH OF CENTER ROAD
 1934 SUNNY VOL 3 PG 249 USED THE CORNER FOR ESTABLISHING THE N/S LINE OF SECTION 3
 DID NOT STATE WHAT HE FOUND OR PLACED.

FOUND LIMESTONE 18"X5"X5", REPLACED L.S. WITH POLY MON.

- (c.) Was the corner restored through acceptance of (1) an obliterated evidence location, or, (2) a found perpetuated location?

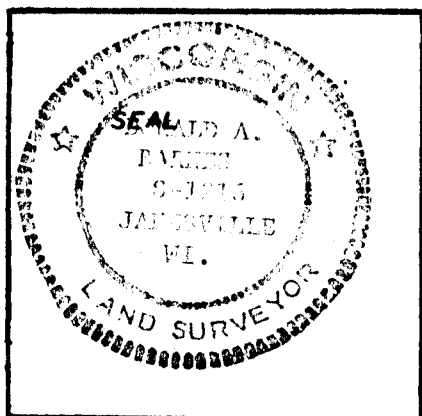
ACCEPTED FOUND PERPETUATED LOCATION.

- (d.) Describe any material discrepancy between the location of the corner as restored or reestablished and the location of that corner as previously restored or reestablished by distance and direction. Show the discrepancy on the plan view drawing under (a), above. Show the distances between the corner as previously restored or reestablished and (1) the corner as restored or reestablished, and (2) to at least 4 of the witness monuments shown on the drawing in (a), above.

NONE

- (e.) Was the corner reestablished through lost corner proportionate methods? If so, show the method, including the directions and distances to other public land survey corners used as evidence or used for proportioning in determining the corner location.

I, Donald Barnes, hereby certify that the corner points as identified by the corner code index were, in a field survey on _____ established, re-established, monumented, re-monumented, recovered or restored as expressed below and in conformance with the regulations and rules as required in the current manual of survey instructions of the United States Department of Interior, Bureau of Land Management.



COUNTY SURVEYOR FILING DATA

Date of Computer Entry _____

Date Received _____

Date Microfilmed _____

Treasurer's Receipt No. _____

Number of Included Sheets _____

AFFIX YOUR LAND SURVEYOR SEAL.

CORNER CODE E 15