

Paper weight-110# (minimum)

Black nonfading ink required

U.S. PUBLIC LAND SURVEY MONUMENT RECORD

For Public Land Survey Corners In:
T. 4N. R. 11E. 4th P.M.
CORNER CODE INDEX

WI ADMINISTRATIVE CODE A-E 7.08 REQUIREMENT
REV 10/23/2004 USMONREC.DWG

A	1	2	3	4	5	6	7	8	9	10	11	12	13	14	15	16	17	18	19	20	21	22	23	24	25	A
B																										B
C																										C
D																										D
E																										E
F																										F
G																										G
H																										H
J																										J
K																										K
L																										L
M																										M
N																										N
O																										O
P																										P
Q																										Q
R																										R
S																										S
T																										T
U																										U
V																										V
W																										W
X																										X
Y																										Y
Z																										Z

PORTER TWP
ROCK COUNTY WI

IF AVAILABLE
ROCK COUNTY COORDINATES PREFERRED

North _____ Elev. _____

East _____

Hor. Datum _____ Vert. Datum _____

LATITUDE _____ ELLIPS. HT. _____

LONGITUDE _____

NAD83(91) _____ NETWORK ADJ. YR _____

GPS (X) _____ TRAVERSE (X) _____

BASED ON THE FOLLOWING CONTROL:

PLACE MONUMENT SYMBOL AT PROPER LOCATION ON ABOVE INDEX

CORNER MONUMENT WITNESS MONUMENT

BEARINGS ARE BASED ON:

FIELD BOOK _____ PAGE # _____

SHEET 1 OF 4

SHOW A PLAN VIEW DRAWING DEPICTING THE CORNER MONUMENT AND SURROUNDING PHYSICAL FEATURES, INCLUDING THE EXCAVATION AREA AND DEPTH.

PLANNING & ZONING COMMITTEE ADOPTED THIS FORM ON 12/2/1982

CORNER CODE E-1(1)

P0521

SW COR SEC 6

(B) Describe any record evidence, monument evidence, occupational evidence, testimonial evidence or any other material evidence you considered, and whether the monument was found or placed.

1833 MULLETT & BRINK (SEP) T4N R10E NORTH ON EAST SIDE OF SECTION 12

2640.0 SET QUARTER SECTION POST IN PRAIRIE AND MADE MOUND.

5280 SET POST CORNER SECTIONS 1 & 12 IN PRAIRIE AND MADE MOUND LAND ROLLING PRAIRIE SECOND RATE.

1833 MULLETT & BRINK (SEP) T4N R10E NORTH ON EAST SIDE OF SECTION 1

330 LEAVE PRAIRIE & ENTER MARSH

627.0 STREAM 3.96' COURSE NE

924.00 STREAM 5.28' COURSE NW

1204.50 STREAM 5.28' COURSE NW

2013 LEAVE MARSH & ENTER WOODLAND

2640.00 SET QUARTER SECTION POST BUR OAK 10 S2 1/2 W 66.66; BURR OAK 12 N51W 25.08'

3267 ENTER MARSH

3333.0 STREAM 1.32' C SE

4290 ENTER WOODLANDS

5280 SET TEMPORARY 6 MILE POST. LAND ROLLING SECOND RATE. EXCEPT MARSH AND TIMBERED WITH BUR BLACK AND WHITE OAK.

1833 HARRISON (NOV 5) WEST BET. SECS. 6 & 7 T4N R11E 4TH MER.

2640.0 SEC COR TO QUARTER SEC ON GROUND DESCENDING WEST. SET A POST & RAISED IN MOUND .

5148.00 W BLDY 143.88' NORTH OF POST. SET A POST & RAISED MOUND OF EARTH & SOD LAND ROLLING 1ST RATE PRAIRIE ??? GRASS & WEEDY

1833 ORIG GOV PLAT 143.88' NORTH OF NE COR SEC 12 UNION TWP

1833 HARRISON (NOV 5) EAST ON RAND. BET SECS 1 & 12 T4N R10E 4TH MER

2640.0 TEMPY 1/4 SEC COR

4509.78 BROOK 5.28' CRS SE{CIRCLED THEN NE WITH N UNDERSCORE} NE

52008.00 INT. EAST 54.78' NORTH OF POST LAND ROLLING 1ST RATE

WEST COR. WEST BET 1 & 12

2600.40 QUARTER SEC COR. SET A POST GRASS & MOUND

5200.80 SEC COR

1870 RUGER (SEP) REMONUMENTATION FIELD NOTES PG 104.

EAST ON NORTH LINE OF NW 1/4 SEC 12 (T4N R10E) ON A VAR 6-50; OFFSET SOUTH 9.90' AT

2618.88 INTERSECTED QUARTER LINE AT QUARTER CORNER. FOUND OLD STAKE AT COR. COR VAR 6-37

EAST ON NORTH LINE OF NE 1/4 SEC 12 (T4N R10E) ON A VAR 6-40 AT

2620.20 INTERSECTED EAST BOUNDARY LINE 17.16' NORTH OF CORNER. CORNER LOST. ESTABLISHED IT FROM QUARTER CORNERS NEXT ADJACENT. NORTH AND SOUTH COR. VAR 6-28

1870 RUGER (SEP) REMONUMENTATION PG 106 SOUTH ON EAST LINE OF NE 1/4 SEC 12 IN A VAR 6-30; OFFSET EAST 10.89' AT

2657.16 INTERSECTED QUARTER LINE 10.56' EAST OF QUARTER CORNER. FOUND OLD STAKE AT CORNER

David Barnes
Apr 12, 2010

PO521 SW COR SEC 6

SOUTH ON EAST LINE OF SE 1/4 SEC 12
ON A VAR 6-20; OFFSET EAST 15.84'

- 2662.44 INTERSECTED SOUTH BOUNDARY LINE 7.59' EAST
OF CORNER. COR VAR 6-31
[RUGER PLACED CUT LIMESTONES]
- 1870 RUGER (SEP) PG 105 REMONUMENTATION NORTH ON EAST
LINE OF SE 1/4 SEC 1 (T4N R10E) ON A
VAR 6-30; OFFSET EAST 3.96' AT
- 2657.16 INTERSECTED QUARTER LINE 9.57' EAST OF
QUARTER CORNER FOUND STUMP OF NORTH
BEARING TREE AND REMAINS OF STUMP OF
SOUTH BEARING TREE. ESTABLISHED QUARTER
CORNER FROM THEM. COR. VAR 6-37
PG 108 NORTH ON EAST LINE NE 1/4 SEC 1
(T4N R10E) ON A VAR 6-45; OFFSET EAST
2.64' OFFSET WEST 2.64'; OFFSET WEST
7.26' AT
- 2636.04 INTERSECTED NORTH BOUNDARY LINE 0.66'
WEST OF CORNER. COR VAR 6-54
[RUGER PLACED CUT LIMESTONES]
- 1893 BLEEDORN VOL 2 PG 473 SHOWS THAT HE FOUND A
MONUMENT AT THE SE CORNER OF SECTION 1, UNION
TOWNSHIP AND HE ALSO FOUND A CORNER AT THE SW
CORNER OF SECTION 6. A JOB OF 143.88.
- 1933 SUNNY VOL 3 PG 227 143.88' NORTH OF A FOUND A 6" X 6"
CUT STONE AT THE SE COR SEC 1 UNION TWP, STATES
NOTHING ABOUT MON BUT CALLS FOR 2513.4 TO S 1/4 COR
SEC 6 & 5157.1 TO SE COR SEC 6
- 1933 SUNNY #3567 DUG & FD NOTHING ACCEPTED FENCE INT.
SHOWS A JOB OF 143?
- 1988 BARNES VOL 6 PG 387 800-52-33W 143.88 TO SE COR
SEC 1 UNION TWP, 889-16-03E 2513.71 TO S 1/4 COR SEC
6, N00-52-33E 2645.28 TO W 1/4 COR SEC 6.
- 1988 BARNES E-1 DUG & FD NOTHING. ESTABLISHED COR ON
LINE WITH THE SE COR & THE E 1/4 COR OF SEC 1 UNION
TOWNSHIP AT RECORD DISTANCE. REFERENCED SAME.
- 1988 BARNES E-25 SE COR SEC 1 UNION TWP. FD TOP 8 INCHES
OF CUT LIMESTONE WITH SCRIBED NUMBERS. IN
EXCAVATION HOLE I FOUND PIECES OF CUT LIMESTONE.
THIS IS IN THE GENERAL AREA THAT THE CORNER IS NOW
POSITIONED. THE SE COR SEC 1 WAS RESTORED THROUGH
ACCEPTANCE OF OBLITERATED EVIDENCE LOCATION. I
PLACED THE SE CORNER OF SEC 1 MID WAY BETWEEN THE E
1/4 COR SEC 1 & THE E 1/4 COR OF SEC 12 AS RUGER
INTENDED. I PRORATED RUGER'S DISTANCE FROM THE S 1/4
COR SEC 1 TO THE SE CORNER OF SEC 1 WITH HIS RECORD
DISTANCES & MY MEASURED DISTANCES FROM THE SW
CORNER OF SEC 1 TO THE S 1/4 COR SEC 1 & FROM THE E
1/4 COR OF SEC 1 TO THE E 1/4 COR SEC 12. FIELD
MEASURED 2624.55 FROM SW TO SE COR SEC 1, 5311.36
FROM E 1/4 COR SEC 1 TO E 1/4 COR SEC 12. REFERENCED
SAME. NO-52-33E 143.88 TO SW COR SEC 6 PORTER TWP.
DUG AND FOUND NOTHING @ SW COR SEC 6. ESTABLISHED
SW CORNER OF SEC 6 ON LINE WITH THE SE CORNER AND E
1/4 CORNER OF SECTION 1 UNION TOWNSHIP AT RECORD
DISTANCE. CORNER WAS ACCEPTED THROUGH ACCEPTANCE
OF OBLITERATED EVIDENCE LOCATION. THE CORNER WAS
PLACED AT RECORD DISTANCE ON LINE WITH THE SE
CORNER OF SECTION 1 AND THE EAST QUARTER CORNER OF
SECTION 1, UNION TOWNSHIP.
- 1988 BARNES E-3 889-16-03E 2513.71 TO S 1/4 COR SEC 6.
- 2003 COMBS GSM VOL 26 PG 385 FD ALUM. MON. @ SE COR SEC
1 2655.63 TO CUT STONE @ E 1/4 COR SEC 1 UNION TWP

Donald Barnes

Apr 12, 2010

SHEET 2 OF 4
CORNER CODE E-1(1)

PO521 SW COR SEC 6

FD POLY MON WITH TOP BROKE OFF @ SE COR SEC 1 AND POLY MON @ SW COR SEC 6. FD REFERENCE MONUMENTS. SET CARBONITE POST ON NORTH SIDE OF SW COR SEC 6. AREA IS IN LOWLAND EAST OF GREEK. AREA WAS BURNED. THE SE COR SEC 1 UNION TWP IS 3.04 WEST OF A LINE BETWEEN THE E 1/4 COR SEC 12 & THE E 1/4 COR SEC 1.

C) Was the corner restored through acceptance of (1) an obliterated evidence location, or, (2) a found perpetuated location?

ACCEPTED FD MONUMENTS.

D) Describe any material discrepancy between the location of the corner as restored or reestablished and the location of that corner as previously restored or reestablished by distance and direction. Show the discrepancy on the plan view drawing under (a), above. Show the distances between the corner as previously restored or reestablished and (1) the corner as restored or reestablished, and (2) to at least 4 of the witness monuments shown on the drawing in (a), above.

(E) Was the corner reestablished through lost corner proportionate methods? If so, show the method, including the directions and distances to other public land survey corners used as evidence or used for proportioning the corner location.

I, **Donald Barnes**, hereby certify that the corner location as identified by the corner code index was determined by me under my direction and control and that this U.S. Public Land Survey Monument Record is correct and complete to the best of my knowledge and belief.

Donald Barnes

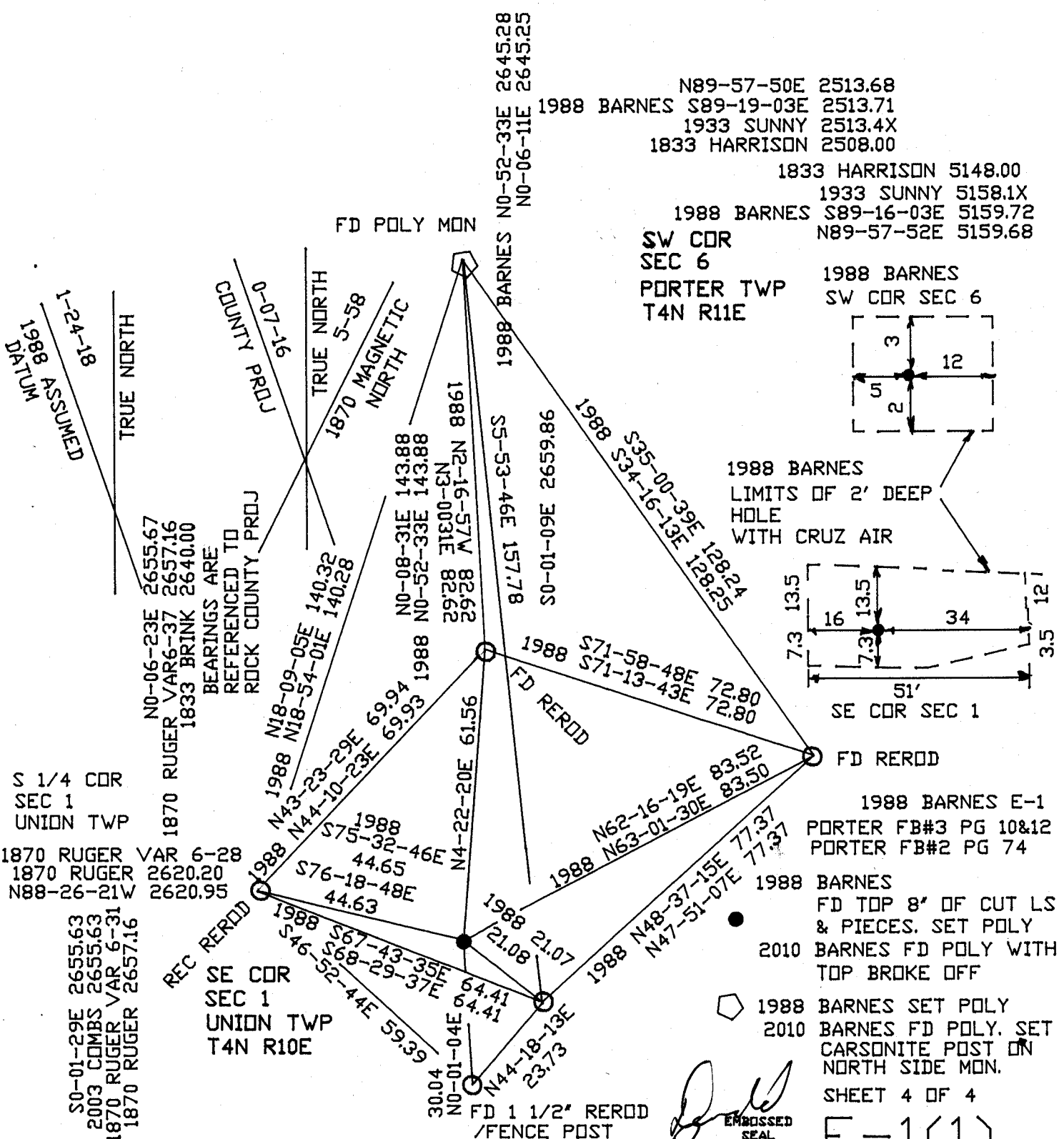
SHEET 3 OF 4

Emboss

APR 12, 2010

CORNER CODE **E-1(1)**

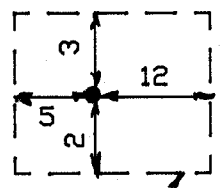
A.E. 7.08 REQUIREMENT



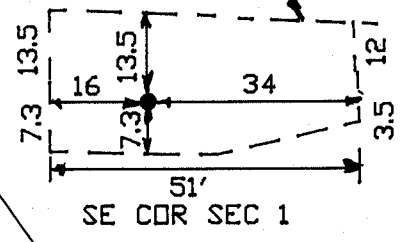
N89-57-50E 2513.68
 1988 BARNES S89-19-03E 2513.71
 1933 SUNNY 2513.4X
 1833 HARRISON 2508.00
 1833 HARRISON 5148.00
 1933 SUNNY 5158.1X
 1988 BARNES S89-16-03E 5159.72
 N89-57-52E 5159.68

SW COR
 SEC 6
 PORTER TWP
 T4N R11E

1988 BARNES
 SW COR SEC 6



1988 BARNES
 LIMITS OF 2' DEEP
 HOLE
 WITH CRUZ AIR



SE COR SEC 1

1988 BARNES E-1
 PORTER FB#3 PG 10&12
 PORTER FB#2 PG 74

1988 BARNES
 FD TOP 8' OF CUT LS
 & PIECES. SET POLY
 2010 BARNES FD POLY WITH
 TOP BROKE OFF

1988 BARNES SET POLY
 2010 BARNES FD POLY. SET
 CARSONITE POST ON
 NORTH SIDE MON.

SHEET 4 OF 4

E-1(1)

[Signature]
 EMBOSSED SEAL
 4/12/200