

Paper weight-110# (minimum)

Black nonfading ink required

U.S. PUBLIC LAND SURVEY MONUMENT RECORD

For Public Land Survey Corners In:

WI ADMINISTRATIVE CODE A-E 7.08 REQUIREMENT

T. 4 N. R. 11 E. 4th P.M.

REV 10/23/2004

USMONREC.DWG

CORNER CODE INDEX

PORTER TWP

ROCK COUNTY WI

IF AVAILABLE

ROCK COUNTY COORDINATES PREFERRED

A	1	2	3	4	5	6	7	8	9	10	11	12	13	14	15	16	17	18	19	20	21	22	23	24	25	A
B			6				5				4				3			2				1				B
C																										C
D																										D
E																										E
F																										F
G																										G
H																										H
J																										J
K																										K
L																										L
M																										M
N																										N
O																										O
P																										P
Q																										Q
R																										R
S																										S
T																										T
U																										U
V																										V
W																										W
X																										X
Y																										Y
Z																										Z

North _____ Elev. _____

East _____

Hor. Datum _____ Vert. Datum _____

LATITUDE _____ ELLIPS. HT. _____

LONGITUDE _____

NAD83(91) _____ NETWORK ADJ. YR _____

GPS (X) _____ TRAVERSE (X) _____

BASED ON THE FOLLOWING CONTROL:

◆ CORNER MONUMENT

○ WITNESS MONUMENT

BEARINGS ARE BASED ON: _____

FIELD BOOK _____ PAGE # _____

SHEET 1 OF 2

SHOW A PLAN VIEW DRAWING DEPICTING THE CORNER MONUMENT AND SURROUNDING PHYSICAL FEATURES, INCLUDING THE EXCAVATION AREA AND DEPTH.

PLANNING & ZONING COMMITTEE ADOPTED THIS FORM ON 12/2/1982

CORNER CODE A-10-(1)

PO1505 1/16THCOR-NW1/4-SEC4

(B) Describe any record evidence, monument evidence, occupational evidence, testimonial evidence or any other material evidence you considered, and whether the monument was found or placed.

- 1874 RUGER VOL 2 PG 129 DROVE STAKE & PUT HH STONE ON N SIDE VAR 8-23. 1302.84 TO NW & N 1/4 COR SEC 4. ENTIRE NORTH LINE OF SEC 8-23. SOUTH 2572.02 TO 1/16TH COR.
- 1973 LEE VOL 5 PG 45 DUG & FD NOTHING. RESET WITH 1" PIPE ON LINE & ONE DIST. FROM N 1/4 & NW COR.
- 1993 BARNES A-10 FD PIPE 1.5 SOUTH GEN PVMT. REFERENCED SAME.

FD PIPE & TIES. IN HARMONY WITH RECORD CALLS.

C) Was the corner restored through acceptance of (1) an obliterated evidence location, or, (2) a found perpetuated location?

ACCEPTED FD PIPE & TIES

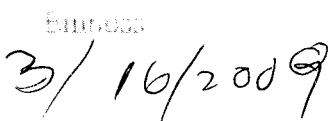
D) Describe any material discrepancy between the location of the corner as restored or reestablished and the location of that corner as previously restored or reestablished by distance and direction. Show the discrepancy on the plan view drawing under (a), above. Show the distances between the corner as previously restored or reestablished and (1) the corner as restored or reestablished, and (2) to at least 4 of the witness monuments shown on the drawing in (a), above.

NONE

(E) Was the corner reestablished through lost corner proportionate methods? If so, show the method, including the directions and distances to other public land survey corners used as evidence or used for proportioning the corner location.

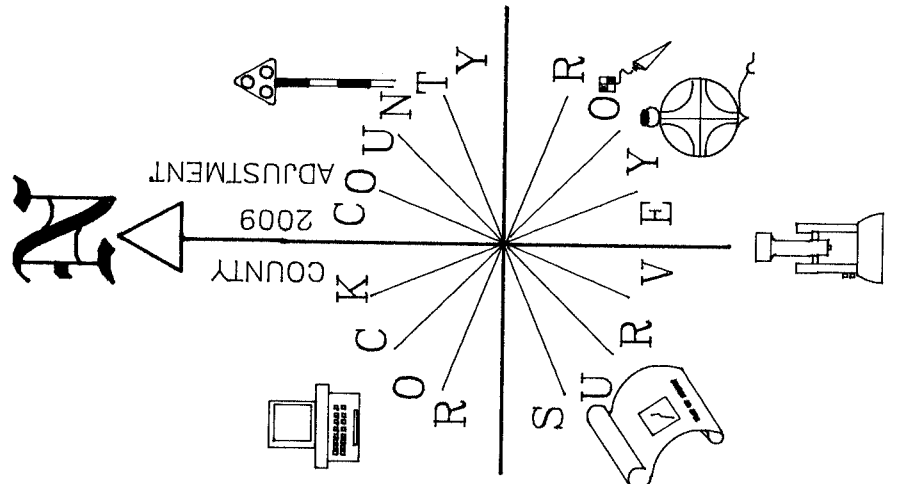
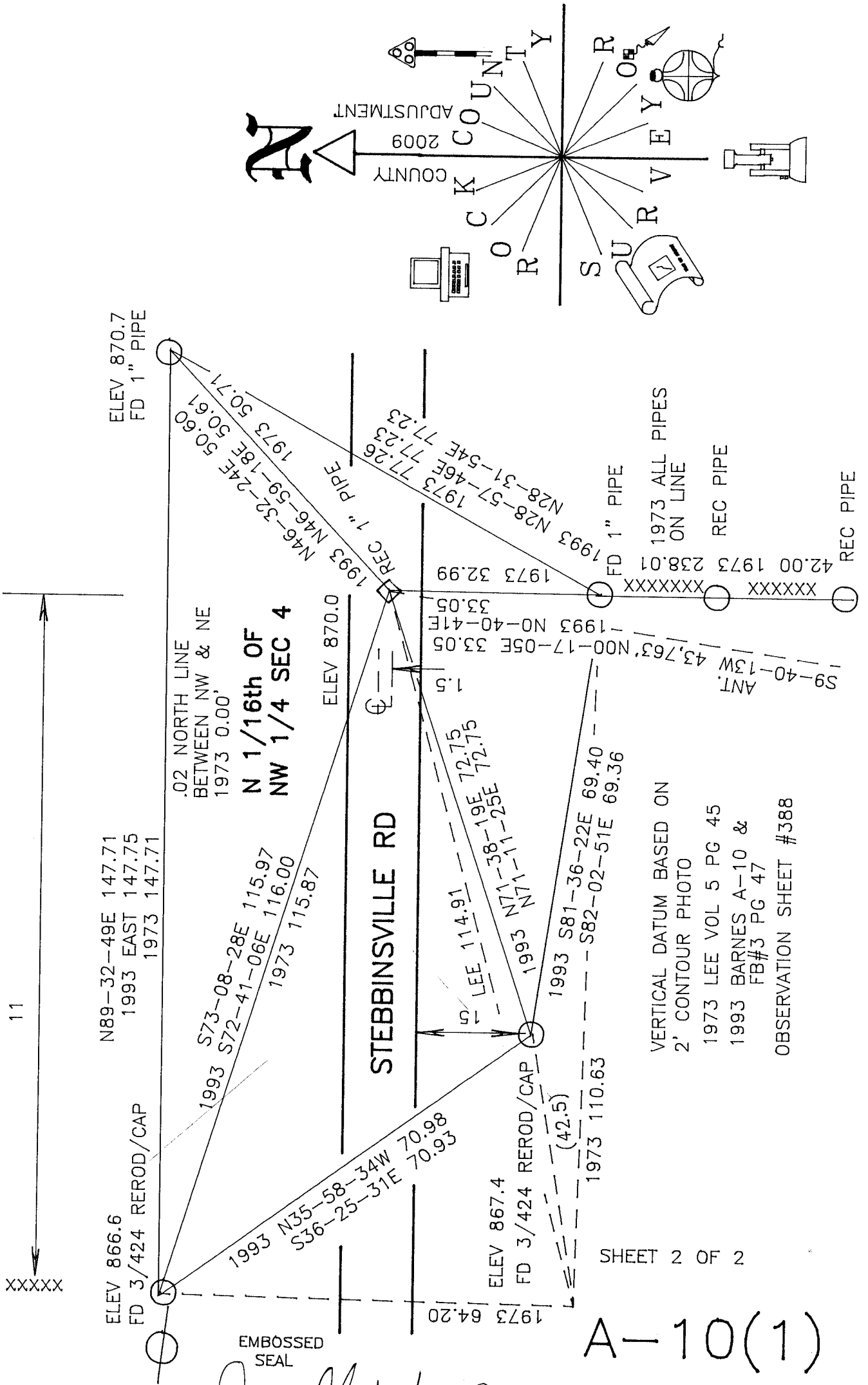
I, Donald Barnes, hereby certify that the corner location as identified by the corner code index was determined by me under my direction and control and that this U.S. Public Land Survey Monument Record is correct and complete to the best of my knowledge and belief.


Donald Barnes


3/16/2009

SHEET 1 OF 2

CORNER CODE **A-10(1)**
A.E. 7.08 REQUIREMENT



XXXXXX
 11

N89-32-49E 147.71
 1993 EAST 147.75
 1973 147.71

ELEV 866.6
 FD 3/424 REROD/CAP

.02 NORTH LINE
 BETWEEN NW & NE
 1973 0.00'

**N 1/16th OF
 NW 1/4 SEC 4**

1993 S73-08-28E 115.97
 1973 S72-41-06E 116.00
 1973 115.87

EMBOSSED SEAL

STEBBINSVILLE RD

ELEV 870.0

1973 64.20
 ELEV 867.4
 FD 3/424 REROD/CAP

1.5
 1993 LEE 114.91
 1973 LEE 114.91
 1993 N71-38-19E 72.75
 1973 N71-38-19E 72.75
 1993 N71-11-25E 72.75
 1973 N71-11-25E 72.75

1993 S81-36-22E 69.40
 1973 S82-02-51E 69.36

SHEET 2 OF 2

VERTICAL DATUM BASED ON
 2' CONTOUR PHOTO
 1973 LEE VOL 5 PG 45
 1993 BARNES A-10 &
 FB#3 PG 47
 OBSERVATION SHEET #388

A-10(1)

Donald Barnes 3/16/2009