

Paper weight-110# (minimum)

Black nonfading ink required

U.S. PUBLIC LAND SURVEY MONUMENT RECORD

For Public Land Survey Corners In:

WI ADMINISTRATIVE CODE A-E 7.08 REQUIREMENT

T. 4 N. R. 11 E. 4th P.M.

REV 10/23/2004

USMONREC.DWG

CORNER CODE INDEX

PORTER TWP
ROCK COUNTY WI

IF AVAILABLE
ROCK COUNTY COORDINATES PREFERRED

A	1	2	3	4	5	6	7	8	9	10	11	12	13	14	15	16	17	18	19	20	21	22	23	24	25	A
B																										B
C																										C
D																										D
E																										E
F																										F
G																										G
H																										H
I																										I
J																										J
K																										K
L																										L
M																										M
N																										N
O																										O
P																										P
Q																										Q
R																										R
S																										S
T																										T
U																										U
V																										V
W																										W
X																										X
Y																										Y
Z																										Z

North _____ Elev. _____

East _____

Hor. Datum _____ Vert. Datum _____

LATITUDE _____ ELLIPS. HT. _____

LONGITUDE _____

NAD83(91) _____ NETWORK ADJ. YR _____

GPS (X) _____ TRAVERSE (X) _____

BASED ON THE FOLLOWING CONTROL:

PLACE MONUMENT SYMBOL AT PROPER LOCATION ON ABOVE INDEX

CORNER MONUMENT

WITNESS MONUMENT

(a)

BEARINGS ARE BASED ON: -----

FIELD BOOK _____ PAGE # _____

SHEET 1 OF 3

SHOW A PLAN VIEW DRAWING DEPICTING THE CORNER MONUMENT AND SURROUNDING PHYSICAL FEATURES, INCLUDING THE EXCAVATION AREA AND DEPTH.

PLANNING & ZONING COMMITTEE ADOPTED THIS FORM ON 12/2/1982

CORNER CODE 47(1)

PO554

W1/4CORSEC18

(B) Describe any record evidence, monument evidence, occupational evidence, testimonial evidence or any other material evidence you considered, and whether the monument was found or placed.

- 1833 (SEP) BRINK & MULLETT T4N R10E VAR 8-15 NORTH ON EAST SIDE OF SECTION 13
1393.92 BUR OAK 16 IN DIAMETER
2640.0 SET QUARTER SECTION POST
BURR OAK 24 N10W 120.78';
BURR OAK 16 S9W 219.12'
2772.0 ENTER PRAIRIE
3762.0 ROAD @ EAST
5280.00 SET POST CORNER SECTIONS 12 & 13 IN PRAIRIE AND MADE A MOUND LAND ROLLING SECOND RATE FIRST 1/2 TIMBERED WITH WHITE BLACK AND BUR OAK LAST 1/2 PRAIRIE
- 1833 ORIG GOV PLAT NW COR SEC 18 PORTER TWP IS 122.00' NORTH OF NE COR SEC 13 UNION TWP
- 1833 ORIG GOV PLAT NW COR SEC 19 PORTER TWP IS 66.00' NORTH OF NE COR SEC 24 UNION TWP
- 1870 RUGER (SEP) REMONUMENTATION PG 103 SOUTH ON EAST LINE OF NE 1/4 SEC 13 (T4N R10E) ON A VAR 6-55; OFFSET EAST 7.26' AT
2661.12 INTERSECTED QUARTER LINE AT QUARTER CORNER. FOUND OLD STAKE AT CORNER. ALSO FOUND STUMPS OF BOTH BEARING TREES. COR VAR 7-05 SEPTEMBER 1, 1870
SOUTH ON EAST LINE OF SE 1/4 SEC 13 ON A VAR 7-00' OFFSET WEST 3.30';
OFFSET WEST 9.24' AT
2657.16 INTERSECTED SOUTH BOUNDARY LINE 10.89'?? WEST OF CORNER COR. VAR 6-53'
- 1961 BATTERMAN VOL 4 PG 112 FD 6X6 CUT STONE MON. AT THE WEST 1/4 COR OF SEC 18-4-11 OR THE EAST 1/4 COR OF SEC 13 UNION TWP. REFERENCED COR.
- 1985 BARNES VOL 6 PG 346 S00-43-58W 2662.99 TO SW COR SEC 18; N89-49-29E 2498.54 S 1/4 COR SEC 18.
- 1986 BARNES VOL 6 PG 360 N0-27-42E 2698.97 TO NW COR SEC 18, S0-43-59E 2698.97 TO POLY @ SW COR SEC 18, S89-30-05E 1202.97 TO FD 1/16TH COR AS RECORDED IN VOL 4 PG 112 129' SOUTH OF E/W LINE, S89-40-29E 5165.84 TO FD ALUM @ E 1/4 COR SEC18. PLACED POLY
- 1986 BARNES L-1 DID NOT FIND ANY RECORD OF THE CORNER BEING ESTABLISHED. PLACED POLY MON ON LINE WITH SW & NW SEC 18 AT MID DISTANCE. PLACED CARSONITE POST NEXT TO MON. 1' EAST OF N/W FENCE & 100' NORTH OF CENTER OF PVMT.
- 1993 COMBS #9871 E 1/4 COR SEC 13 UNION TWP FD POLY. N89-17-35W ALONG SEC LINE.
- 1993 COMBS #9873 CALLS FOR E 1/4 COR SEC 13 UNION TWP BUT STATES NOTHING ABOUT MON.
- 1999 COMBS #7381 FD ALUM. MON @ E 1/4 COR SEC 13, S88-53-50W TO CI @ W 1/4 COR SEC 13.
- 2002 COMBS CSM 25 131 FD POLY @ E 1/4 COR SEC 13 UNION TWP.

FOUND ALUM/ CARSONITE POST @ THE W 1/4 COR SEC 18, 3 REFERENCE MONUMENTS, & POLY MON 0.6' DEEP @ THE E 1/4 COR SEC 13. THE POLY MON. IS 2.5 SOUTH OF THE CENTER PVMT. PLACED MAGNETS ON THE SOUTH SIDE. THE TOP OF THE POLY MON IS BROKEN OFF. I PLACED A MAGNET ON THE NE SIDE & THE SOUTH SIDE OF THE POLY.

D. Barnes
11/04/2007

SHEET 1 OF 3

4-1(1)

CORNER CODE L-1(1)

PO554 W1/4CORSEC18

C) Was the corner restored through acceptance of (1) an obliterated evidence location, or, (2) a found perpetuated location?

ACCEPTED ALUM. MON. & POLY MON WHICH IS OVER THE CUT LIMESTONE @ E 1/4 COR SEC 13 UNION TWP.

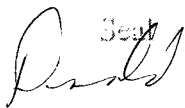
D) Describe any material discrepancy between the location of the corner as restored or reestablished and the location of that corner as previously restored or reestablished by distance and direction. Show the discrepancy on the plan view drawing under (a), above. Show the distances between the corner as previously restored or reestablished and (1) the corner as restored or reestablished, and (2) to at least 4 of the witness monuments shown on the drawing in (a), above.

IN 1961 BATTERMAN (VOL 4 PG 112) FD HARD HEAD 14X9X4 AT THE SOUTHEAST COR OF THE SOUTHWEST 1/4 OF THE NORTHWEST 1/4 OF SEC 18. HE REFERENCED THE CORNER & IN 1986 I PLACED A 1/2 X 24 REROD FROM THE TIES. THIS POINT DOESN'T SEEM TO FIT ANYTHING. IT IS 50.91 OFF A LINE BETWEEN THE E 1/4 COR SEC 13 & THE E 1/4 COR SEC 18. IT IS 129.28 OFF A LINE BETWEEN THE W 1/4 COR SEC 18 & THE E 1/4 COR SEC 18

(E) Was the corner reestablished through lost corner proportionate methods? If so, show the method, including the directions and distances to other public land survey corners used as evidence or used for proportioning the corner location.

YES. THE FEDERAL SURVEYOR NEVER ESTABLISHED THIS CORNER.

I, **Donald Barnes**, hereby certify that the corner location as identified by the corner code index was determined by me under my direction and control and that this U.S. Public Land Survey Monument Record is correct and complete to the best of my knowledge and belief.

Seal


Emboss


SHEET 2 OF 3

11/04/2009

CORNER CODE **L-1(1)**

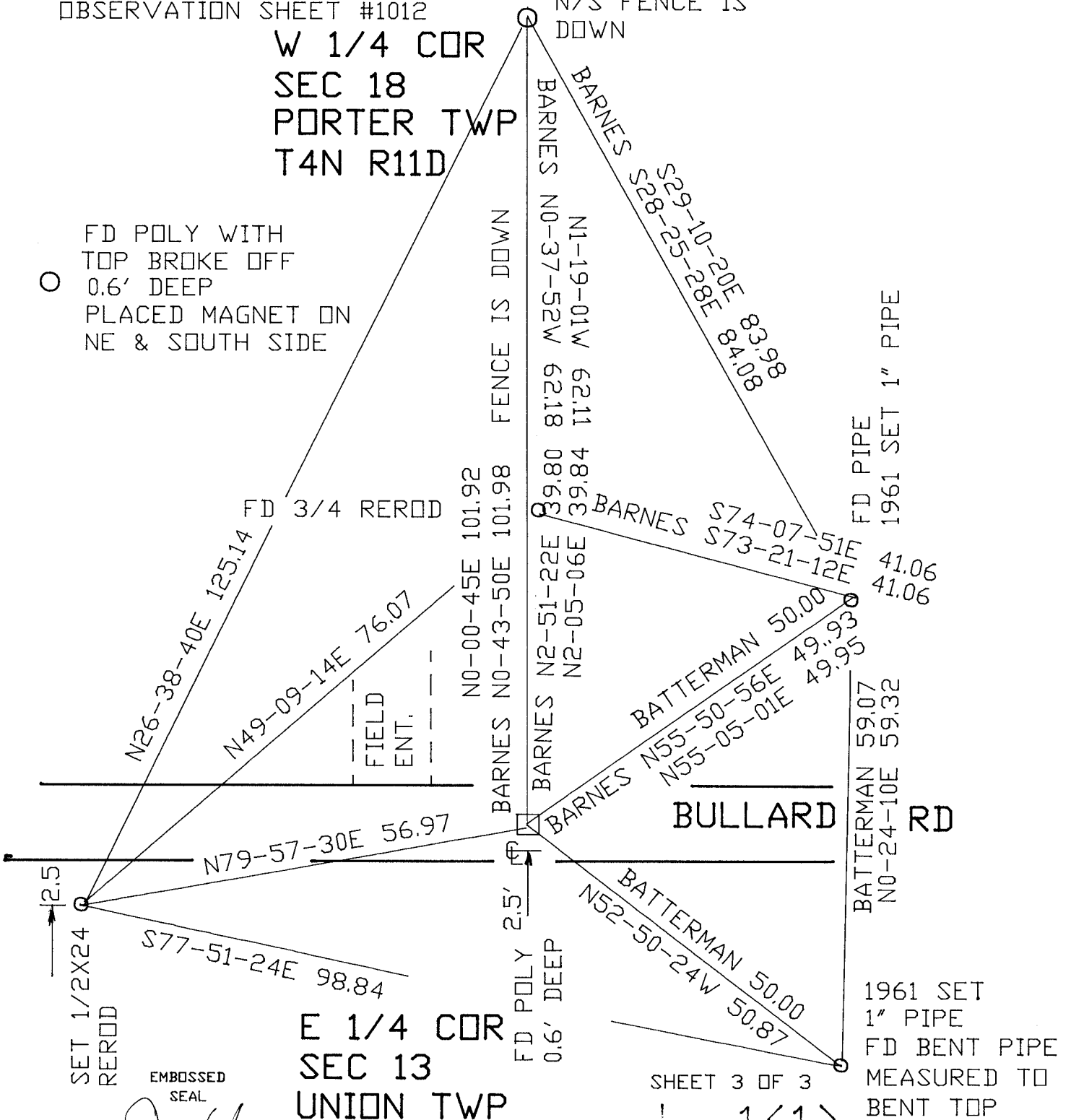
A.E. 7.08 REQUIREMENT

1986 BARNES L-1 FB#2 PG 58
1961 BATTERMAN JR. VOL 4 PG 112
OBSERVATION SHEET #1012

FD ALUM/
CARSONITE
N/S FENCE IS
DOWN

W 1/4 COR
SEC 18
PORTER TWP
T4N R11D

○
FD POLY WITH
TOP BROKE OFF
0.6' DEEP
PLACED MAGNET ON
NE & SOUTH SIDE



E 1/4 COR
SEC 13
UNION TWP

SHEET 3 OF 3

L-1(1)

EMBOSSED SEAL

Daniel Barnes

11/04/2009