

Paper weight-110# (minimum)

Black nonfading ink required

U.S. PUBLIC LAND SURVEY MONUMENT RECORD

For Public Land Survey Corners In:
T. 4 N. R. 11 E. 4th P.M.
CORNER CODE INDEX

WI ADMINISTRATIVE CODE A-E 7.08 REQUIREMENT
REV 10/23/2004 USMONREC.DWG

A	1	2	3	4	5	6	7	8	9	10	11	12	13	14	15	16	17	18	19	20	21	22	23	24	25	A
B			6				5				4				3			2				1				B
C																										C
D																										D
E																										E
F																										F
G																										G
H																										H
I																										I
J																										J
K																										K
L																										L
M																										M
N																										N
O																										O
P																										P
Q																										Q
R																										R
S																										S
T																										T
U																										U
V																										V
W																										W
X																										X
Y																										Y
Z																										Z

PORTER TWP
ROCK COUNTY WI

IF AVAILABLE
ROCK COUNTY COORDINATES PREFERRED

North _____ Elev. _____

East _____

Hor. Datum _____ Vert. Datum _____

LATITUDE _____ ELLIPS. HT. _____

LONGITUDE _____

NAD83(91) _____ NETWORK ADJ. YR _____

GPS (X) _____ TRAVERSE (X) _____

BASED ON THE FOLLOWING CONTROL:

◆ CORNER MONUMENT

○ WITNESS MONUMENT

(a)

BEARINGS ARE BASED ON: _____

FIELD BOOK _____ PAGE # _____

SHEET 1 OF 3

SHOW A PLAN VIEW DRAWING DEPICTING THE CORNER MONUMENT AND SURROUNDING PHYSICAL FEATURES, INCLUDING THE EXCAVATION AREA AND DEPTH.

PLANNING & ZONING COMMITTEE ADOPTED THIS FORM ON 12/2/1982

CORNER CODE G-1(1)

POR 53A W 1/4 COR SEC 7

UN540 E1/4CORSEC12

(B) Describe any record evidence, monument evidence, occupational evidence, testimonial evidence or any other material evidence you considered, and whether the monument was found or placed.

- 1833 (SEP) BRINK & MULLETT T4N R10E VAR 8-15 NORTH ON EAST SIDE OF SECTION 12
2640.0 SET QUARTER SECTION POST IN PRAIRIE AND MADE MOUND
5280.00 SET POST CORNER SECTIONS 1 & 12 IN PRAIRIE AND MADE MOUND LAND ROLLING PRAIRIE SECOND RATE
- 1833 ORIG GOV PLAT NW COR SEC 7 PORTER TWP IS 143.88'
NORTH OF NE COR SEC 12 UNION TWP
- 1833 ORIG GOV PLAT NW COR SEC 18 PORTER TWP IS 122.00'
NORTH OF NE COR SEC 13 UNION TWP
- 1870 RUGER (SEP) REMONUMENTATION PG106 SOUTH ON EAST LINE OF NE 1/4 SEC 12 IN A VAR 6-30; OFFSET EAST 10.89' AT
2657.16 INTERSECTED QUARTER LINE 10.56' EAST OF QUARTER CORNER. FOUND OLD STAKE AT CORNER
SOUTH ON EAST LINE OF SE 1/4 SEC 12 ON A VAR 6-20; OFFSET EAST 15.84'
2662.44 INTERSECTED SOUTH BOUNDARY LINE 7.59' EAST OF CORNER. COR VAR 6-31
[RUGER PLACED CUT LIMESTONES]
- 1909 KERCH VOL 3 PG 51 AT E 1/4 COR SEC 12 UNION TWP STATES 'MON' & 2668.0 TO SE COR SEC 12. USED TO SUBDIVIDE SEC 12. SET GAS PIPES AT INTERIOR CORNERS OF SE 1/4.
- 1952 SUNNY #3576 SET 1X30 PIPE FOR CORNER. EASTERLY 1203.5 TO SET 1X30 PIPE @ N 1/16TH COR OF SW 1/4 SEC 7, SOUTHERLY 1322.2 TO E/W FENCE GOING TO THE EAST, COR IS 139.6 NORTH OF CUT STONE @ E 1/4 COR SEC 12 UNION TWP. MAP SHOWS W 1/4 COR SEC 7 AS 15' WEST OF N/S FENCE & E 1/4 COR SEC 12 AS ON E/W FENCE TO THE WEST & ON LINE WITH N/S FENCE TO THE SOUTH, BUT 15 WEST OF N/S FENCE TO THE NORTH.
- 1976 BARNES VOL 5 PG 121 FD 1" IRON PIPE SET BY SUNNY, 139.61 NORTH OF CUT STONE @ E 1/4 COR SEC 12 UNION TWP. REFERENCED SAME. STONE ON LINE WITH E/W FENCE TO THE WEST, W 1/4 COR SEC 7 IS ON LINE WITH E/W FENCE TO THE EAST.
- 1986 BARNES G-25 PORTER FB #2 PG 54 FD CUT LIMESTONE @ E 1/4 COR SEC 12 UNION TWP. REFERENCED SAME. PLACED PLASTIC POST ON WEST SIDE OF LS. CALLS FOR E/W FENCE GOING TO THE EAST ABOUT 139' NORTH OF THE LS.
- 1988 BARNES VOL 6 PG 387 SHOWS NORTH OF E 1/4 COR SEC 12.
- 1988 BARNES E-23 CALLS FOR STARTING AT THE SW COR SEC 1 UNION TWP THENCE S89-32-19E 2624.55 (RUGER 2618.88) TO S 1/4 COR SEC 1; THENCE S87-39-59E 2621.10 (RUGER 2620.20) TO SE COR SEC 1; THENCE S00-44-52W 2655.68 (RUGER 2657.16) TO E 1/4 COR SEC 12. FROM SE COR SEC 1 TO E 1/4 COR SEC 1 IS N00-52-33E 2655.68 TO E 1/4 COR SEC 1. ACCEPTED SUNNY'S PIPE.

SHEET 1 OF 3

CORNER CODE G-1(1)

Ronald Barnes
APR 16, 2010

THE N/S FENCE NOW ENDS AT THE E ¼ COR SEC 12 UNION TWP. THE E/W FENCE @ THE W ¼ COR SEC 7 IS GONE. I FOUND THE REFERENCE MONUMENTS AS SHOWN IN THE DRAWING. THE MOST EASTERLY 3/8 REROD WAS DISTURBED. I PLACED A 3/4X24 REROD 15" DEEP WITH 2 MAGNETS FROM PREVIOUS TIES.

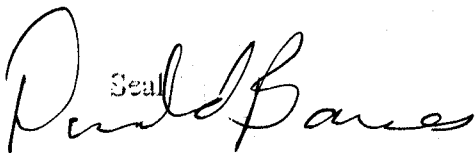
C) Was the corner restored through acceptance of (1) an obliterated evidence location, or, (2) a found perpetuated location?

ACCEPTED OBLITERATED LOCATION.

D) Describe any material discrepancy between the location of the corner as restored or reestablished and the location of that corner as previously restored or reestablished by distance and direction. Show the discrepancy on the plan view drawing under (a), above. Show the distances between the corner as previously restored or reestablished and (1) the corner as restored or reestablished, and (2) to at least 4 of the witness monuments shown on the drawing in (a), above.

(E) Was the corner reestablished through lost corner proportionate methods? If so, show the method, including the directions and distances to other public land survey corners used as evidence or used for proportioning the corner location.

I, **Donald Barnes**, hereby certify that the corner location as identified by the corner code index was determined by me under my direction and control and that this U.S. Public Land Survey Monument Record is correct and complete to the best of my knowledge and belief.

Seal

 Embossed
 APR 16, 2010

SHEET 2 OF 3

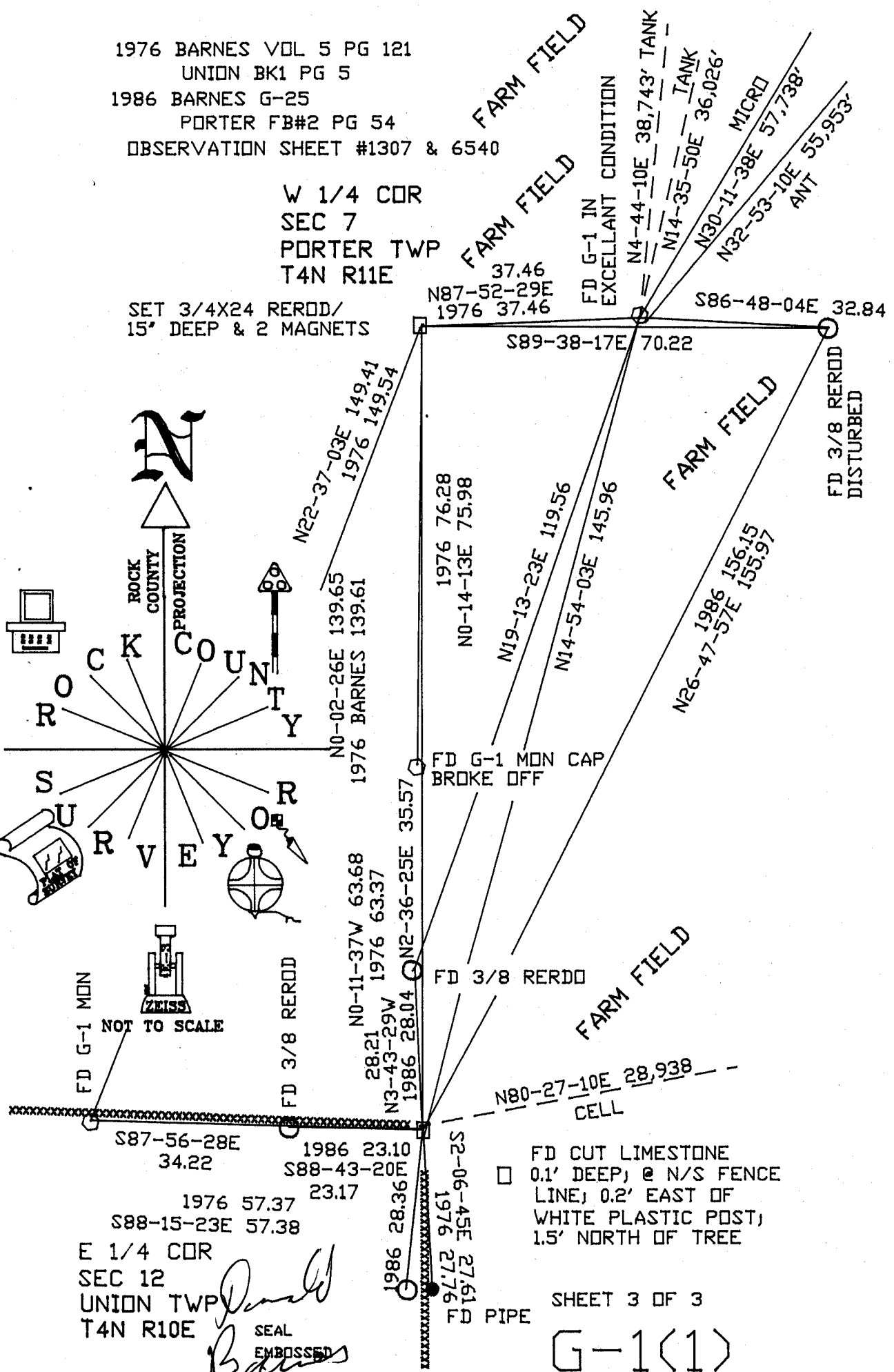
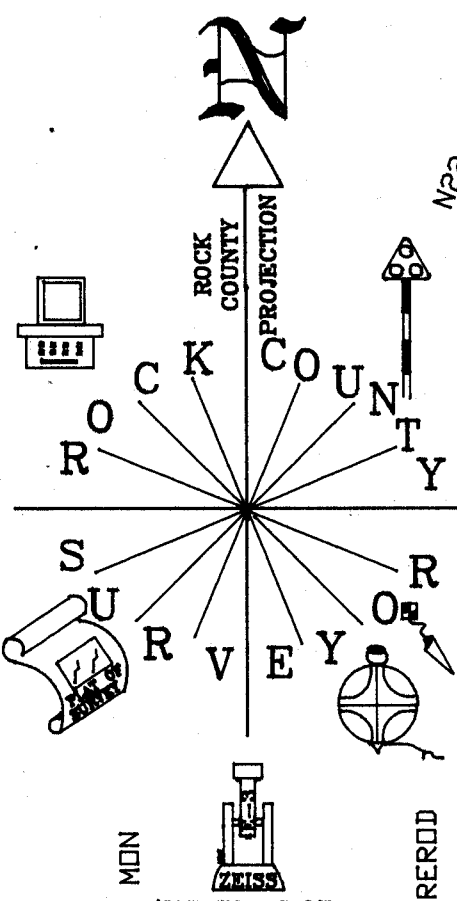
CORNER CODE **G-1(1)**

A.E. 7.08 REQUIREMENT

1976 BARNES VOL 5 PG 121
 UNION BK1 PG 5
 1986 BARNES G-25
 PORTER FB#2 PG 54
 OBSERVATION SHEET #1307 & 6540

W 1/4 COR
 SEC 7
 PORTER TWP
 T4N R11E

SET 3/4X24 REROD/
 15' DEEP & 2 MAGNETS



E 1/4 COR
 SEC 12
 UNION TWP
 T4N R10E

Donald Barnes
 SEAL
 EMBOSSED

Apr 15 2010

SHEET 3 OF 3

G-1(1)