

Paper weight-110# (minimum)

Black nonfading ink required

U.S. PUBLIC LAND SURVEY MONUMENT RECORD

For Public Land Survey Corners In:

WI ADMINISTRATIVE CODE A-E 7.08 REQUIREMENT

T. 1 N. R. 11 E. 4th P.M.

REV 10/23/2004

USMONREC.DWG

CORNER CODE INDEX

A	1	2	3	4	5	6	7	8	9	10	11	12	13	14	15	16	17	18	19	20	21	22	23	24	25	A
B																										B
C																										C
D																										D
E																										E
F																										F
G																										G
H																										H
J																										J
K																										K
L																										L
M																										M
N																										N
O																										O
P																										P
Q																										Q
R																										R
S																										S
T																										T
U																										U
V																										V
W																										W
X																										X
Y																										Y
Z																										Z

PLACE MONUMENT SYMBOL \blacklozenge AT PROPER LOCATION ON ABOVE INDEX

Newark TWP

ROCK COUNTY WI

IF AVAILABLE

ROCK COUNTY COORDINATES PREFERRED

North 182397.826 Elev. 739.96

East 2,197,867.906

Hor. Datum NAD 83 Vert. Datum NAVD 88

LATITUDE 42-29-50.01440 ELLIPS. HT.

LONGITUDE 089-08-58.40024 191.886 m

NAD83(91) NETWORK ADJ. YR 2007

GPS (X) X TRAVERSE (X)

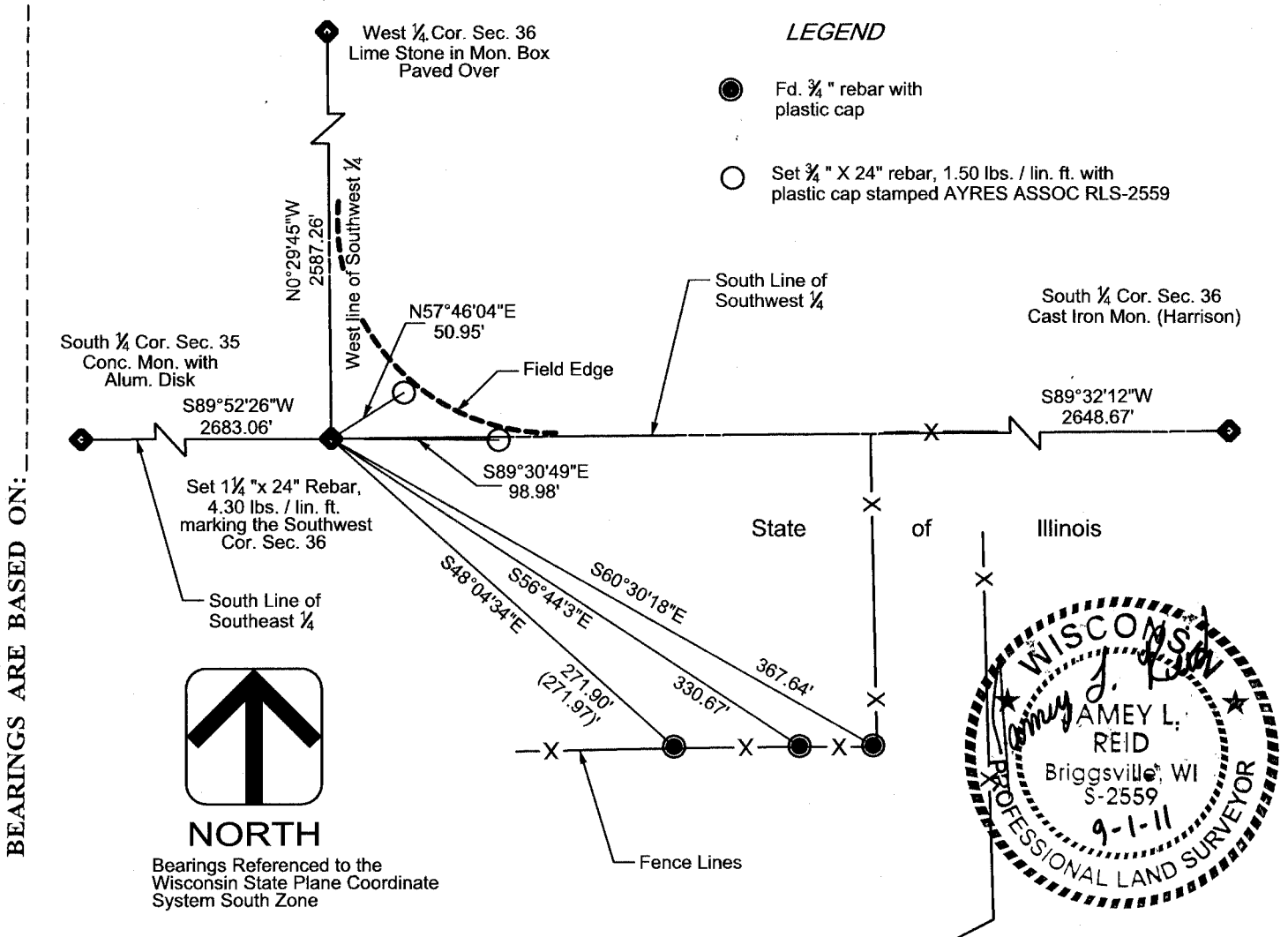
BASED ON THE FOLLOWING CONTROL:

"JALF" WISCRS Station, Newark E GPS

\blacklozenge CORNER MONUMENT

\circ WITNESS MONUMENT

(a)



Prepared by Ayres Associates.

FIELD BOOK 468 PAGE # 20

SHEET 1 OF 2

SHOW A PLAN VIEW DRAWING DEPICTING THE CORNER MONUMENT AND SURROUNDING PHYSICAL FEATURES, INCLUDING THE EXCAVATION AREA AND DEPTH.

PLANNING & ZONING COMMITTEE ADOPTED THIS FORM ON 12/2/1982

CORNER CODE Z-21 (1)

(B) Describe any record evidence, monument evidence, occupational evidence, testimonial evidence or any other material evidence you considered, and whether the monument was found or placed.

Don Barnes Monument Record dated 6-29-01 - Dug in spring time when there was alot of rain. Hole filled with water. Record explains that a monument would need to be set after crops are down and water had dried up.

7-28-11 - I searched for corner with land owner Mr. Joseph H. Perkins. He explained that he remembered another surveyor telling him that he had dug in this location and found a monument. This area was an existing hole approximately 1' deep. I dug a 2.5' x 2.5' hole over 2' deep in this same location and found nothing. I then set a 1 1/4 " x 30" rebar to mark the corner location.

C) Was the corner restored through acceptance of (1) an obliterated evidence location, or, (2) a found perpetuated location?

Corner was restored using witness monuments as shown on Don Barnes monument record. This location agreed with the testimonial evidence provided by owner Mr. Joseph H. Perkins.

D) Describe any material discrepancy between the location of the corner as restored or reestablished and the location of that corner as previously restored or reestablished by distance and direction. Show the discrepancy on the plan view drawing under (a), above. Show the distances between the corner as previously restored or reestablished and (1) the corner as restored or reestablished, and (2) to at least 4 of the witness monuments shown on the drawing in (a), above.

(E) Was the corner reestablished through lost corner proportionate methods? If so, show the method, including the directions and distances to other public land survey corners used as evidence or used for proportioning the corner location.

No.

I, Jamey Reid, hereby certify that the corner location as identified by the corner code index was determined by me under my direction and control and that this U.S. Public Land Survey Monument Record is correct and complete to the best of my knowledge and belief.



SHEET 2 OF 2

CORNER CODE

A.E. 7.08 REQUIREMENT

Z - 21 (1)