

U.S. PUBLIC LAND SURVEY MONUMENT RECORD

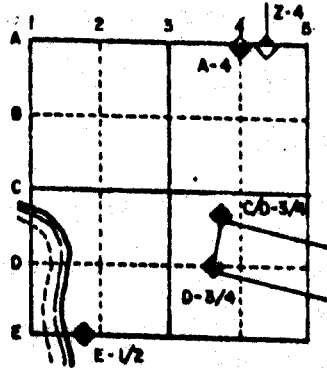
For Public Land Survey Corners in the
T. 2N., R. 10E.

CORNER CODE INDEX

	1	2	3	4	5	6	7	8	9	10	11	12	13	14	15	16	17	18	19	20	21	22	23	24	25
A																									
B																									
C		6																							
D			5																						
E				4																					
F					3																				
G						2																			
H																									
I																									
J																									
K																									
L																									
M																									
N																									
O																									
P																									
Q																									
R																									
S																									
T																									
U																									
V																									
W																									
X																									
Y																									
Z																									

PLACE MONUMENT SYMBOL (◆) AT PROPER LOCATION ON ABOVE INDEX

EXAMPLE



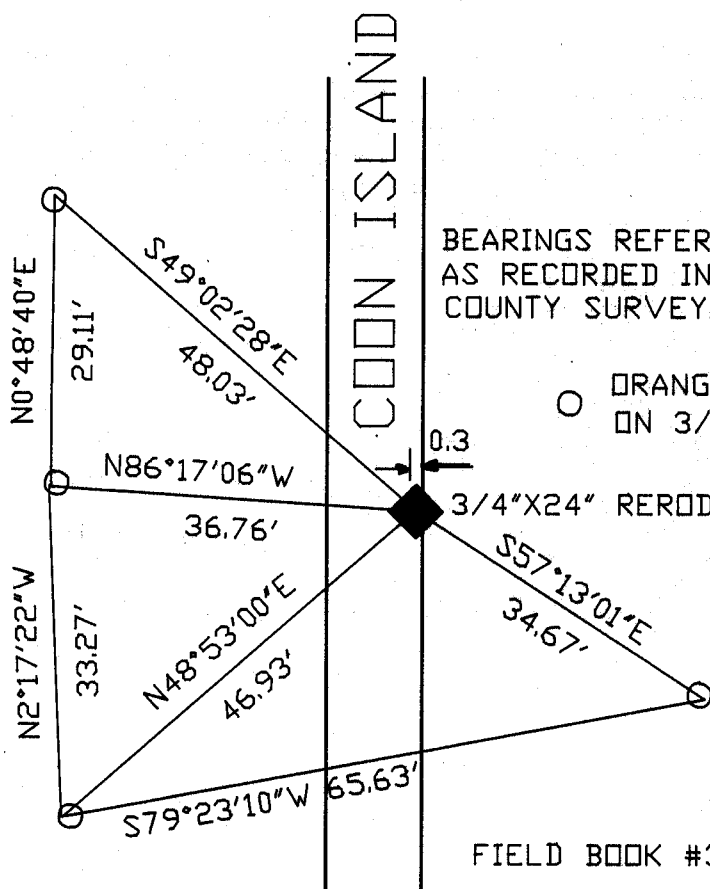
SPRING VALLEY TWP
ROCK COUNTY WI

IF AVAILABLE STATE PLANE COORDINATES

North (Y) _____ Elev. (Z) _____
 East (X) _____ Zone _____
 Hor. Datum _____ Vert. Datum _____

◆ CORNER MONUMENT ○ WITNESS MONUMENT

BEARINGS ARE BASED ON:



BEARINGS REFERENCED TO SECTION AS RECORDED IN VOL 6 PG 403 COUNTY SURVEYORS RECORDS

○ ORANGE PLASTIC CAP ON 3/4"X24" REROD

2' FRUIT TREE

FIELD BOOK #3 PG 23

MICROFILMED

SHEET ___ OF ___

CORNER CODE: J 24 (1)

(B) Describe any record evidence, monument evidence, occupational evidence, testimonial evidence or any other material evidence you considered, and whether the monument was found or placed.

1867 LOCKE PLACED STAKE AND SURROUNDED IT WITH 4 FLAT LIMESTONES.

1874 RUGER FOUND LOCKE'S STAKE AND 4 LIMESTONES.

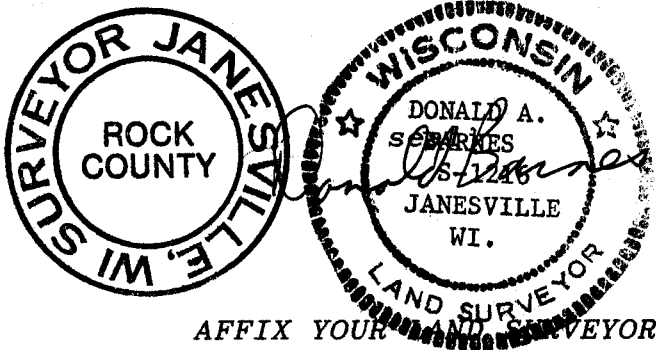
FOUND LIMITS OF OLD EXCAVATION BY FORMER COUNTY SURVEYOR. SEE J 24 DATED NOVEMBER 1 1989. DUG AND FOUND COMB'S 3/4"X24" REROD AT GROUND SURFACE. AT ABOUT 3' THE CRUZ AIR DUG UP A 1/2"X9" SQUARE SPIKE. I COULD NOT DETERMINE ITS ORIGINAL POSITION. I FOUND AT A DEPTH OF 3.1' A GROUP OF 4 LARGE FLAT LIMESTONES. I PLACED A 3/4"X24" REROD IN THE CENTER AND A 3/4"X24" REROD AT GRADE. THE CORNER IS IN HARMONY WITH THE NORTH QUARTER CORNER THAT I PLACED AND THE NE CORNER OF SECTION 13.

C) Was the corner restored through acceptance of (1) an obliterated evidence location, or, (2) a found perpetuated location?

D) Describe any material discrepancy between the location of the corner as restored or reestablished and the location of that corner as previously restored or reestablished by distance and direction. Show the discrepancy on the plan view drawing under (a), above. Show the distances between the corner as previously restored or reestablished and (1) the corner as restored or reestablished, and (2) to at least 4 of the witness monuments shown on the drawing in (a), above.

(E) Was the corner reestablished through lost corner proportionate methods? If so, show the method, including the directions and distances to other public land survey corners used as evidence or used for proportioning the corner location.

I, Donald Barnes, hereby certify that the corner points as identified by the corner code index were, in a field survey on, MAY 15, 1990, established, re-established, monumented, re-monumented, recovered or restored as expressed below and in conformance with the regulations and rules as required in the current manual of survey instructions of the United States Department of Interior, Bureau of Land Management.



AFFIX YOUR SURVEYOR SEAL

COUNTY SURVEYOR FILING DATA

Date of computer entry _____

Date microfilmed _____

Number of included sheets _____
CORNER CODE

J 24 (1)