

U.S. PUBLIC LAND SURVEY MONUMENT RECORD

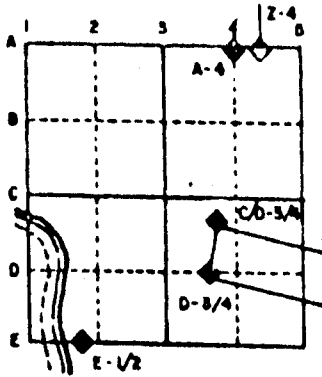
For Public Land Survey Corners in the
T. 3 N., R. 12 E.

CORNER CODE INDEX

	1	2	3	4	5	6	7	8	9	10	11	12	13	14	15	16	17	18	19	20	21	22	23	24	25
A																									
B																									
C	6	5	4	3	2																				
D																									
E																									
F																									
G	7	8	9	10	11	12																			
H																									
I																									
J																									
K																									
L	18	17	16	15	14	13																			
M																									
N																									
O																									
P	19	20	21	22	23	24																			
Q																									
R																									
S																									
T	30	29	28	27	26	25	◆																		
U																									
V																									
W																									
X																									
Y																									
Z																									

PLACE MONUMENT SYMBOL (◆) AT PROPER LOCATION ON ABOVE INDEX

EXAMPLE



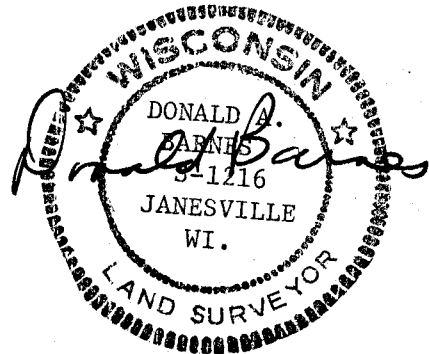
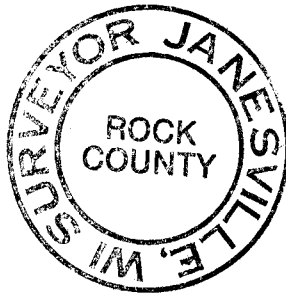
JANESVILLE TWP
 ROCK COUNTY WI

IF AVAILABLE
 STATE PLANE COORDINATES

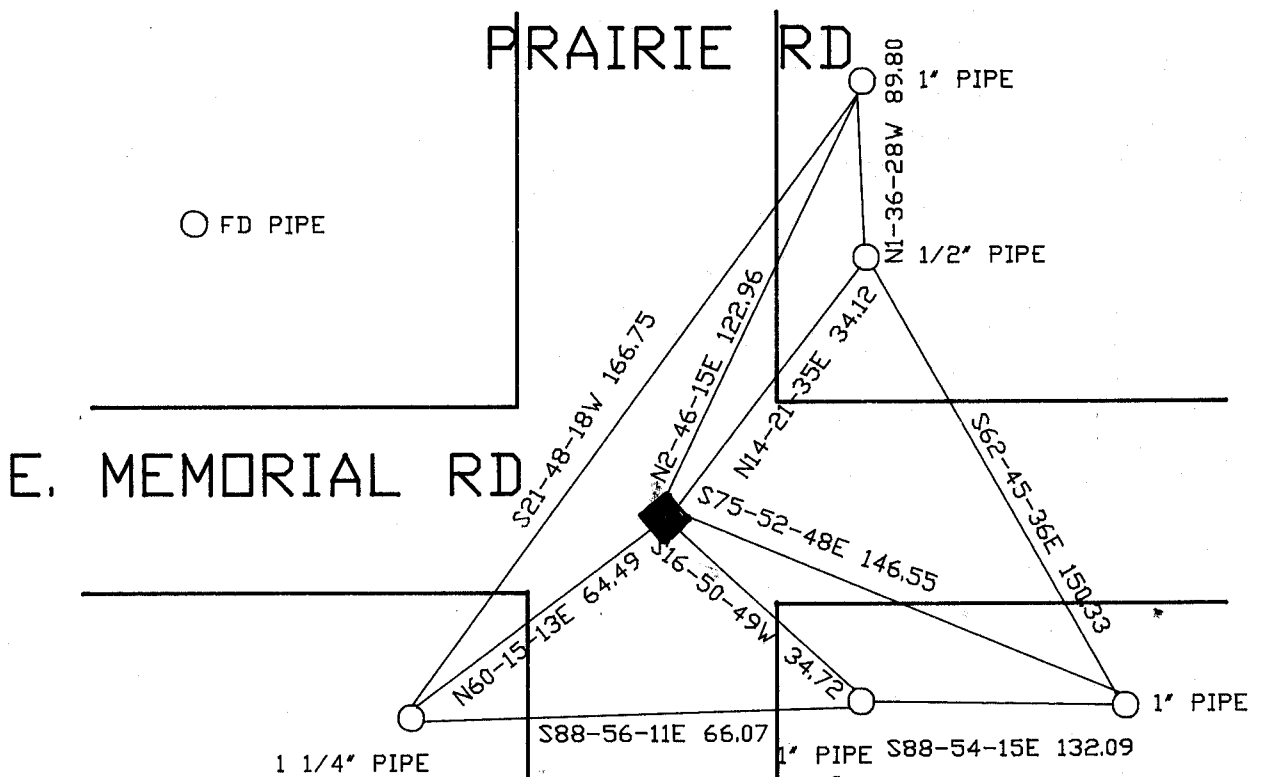
North (Y) 254,389.75 Elev. (Z) _____
 East (X) 3,232,641.62 Zone _____
 Hor. Datum _____ Vert. Datum _____

◆ CORNER MONUMENT

○ WITNESS MONUMENT



BEARINGS ARE BASED ON: JANESVILLE TWP
PROJECT



MICROFILMED
 SHEET 1 OF 2

CORNER CODE: T 24

(B) Describe any record evidence, monument evidence, occupational evidence, testimonial evidence or any other material evidence you considered, and whether the monument was found or placed.

1892 BLEEDORN VALENTINE'S ADD. BK 5 PG 42 CALLS FOR A RED BRICK AT THE CORNER AND THE WEST RIGHT OF WAY LINE OF PRAIRIE RD IS 56.4 WEST OF THE 1/16TH CORNER ON THE E/W CENTER LINE OF THE SECTION. ALSO THE EAST RIGHT OF WAY LINE OF PRAIRIE RD IS 9.3 EAST OF THE 1/16TH CORNER AND THE WEST RIGHT OF WAY LINE OF PRAIRIE IS 56.7 AT THE NORTH RIGHT OF WAY LINE OF E. MEMORIAL RD. ALSO STATES THAT THE 1/16TH CORNER IS 1315 FROM THE N 1/6TH CORNER OF THE SE 1/4 OF SECTION 25.

RESTORED THE CORNER BY INTERSECTING THE CENTER OF THE RIGHT OF WAY FOR E. MEMORIAL RD AND THE RIGHT OF WAY FOR PRAIRIE AS CALLED FOR BY BLEEDORN. THE RIGHT OF WAY WAS ESTABLISHED FROM FOUND PROPERTY CORNERS. THIS IS IN HARMONY WITH THE BLEEDHORN'S DISTANCES. PLACED G-1 MONUMENT WITH DRILL HOLE IN CAP AND MAGNET .6' DEEP.

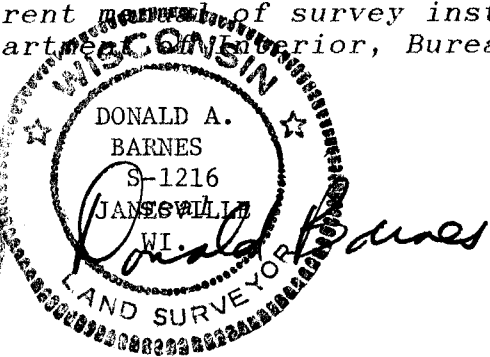
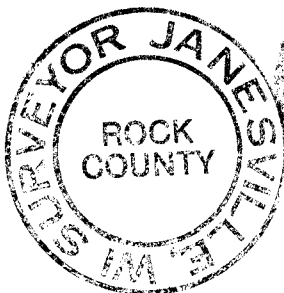
C) Was the corner restored through acceptance of (1) an obliterated evidence location, or, (2) a found perpetuated location?

RESTORED CORNER THROUGH ACCEPTANCE OF OBLITERATED EVIDENCE LOCATION.

D) Describe any material discrepancy between the location of the corner as restored or reestablished and the location of that corner as previously restored or reestablished by distance and direction. Show the discrepancy on the plan view drawing under (a), above. Show the distances between the corner as previously restored or reestablished and (1) the corner as restored or reestablished, and (2) to at least 4 of the witness monuments shown on the drawing in (a), above.

(E) Was the corner reestablished through lost corner proportionate methods? If so, show the method, including the directions and distances to other public land survey corners used as evidence or used for proportioning the corner location.

I, Donald Barnes, hereby certify that the corner points as identified by the corner code index were, in a field survey on, JULY 23, 1991, established, re-established, monumented, re-monumented, recovered or restored as expressed below and in conformance with the regulations and rules as required in the current manual of survey instructions of the United States Department of the Interior, Bureau of Land Management.



COUNTY SURVEYOR FILING DATA

Date of computer entry _____

Date microfilmed _____

Number of included sheets _____

CORNER CODE

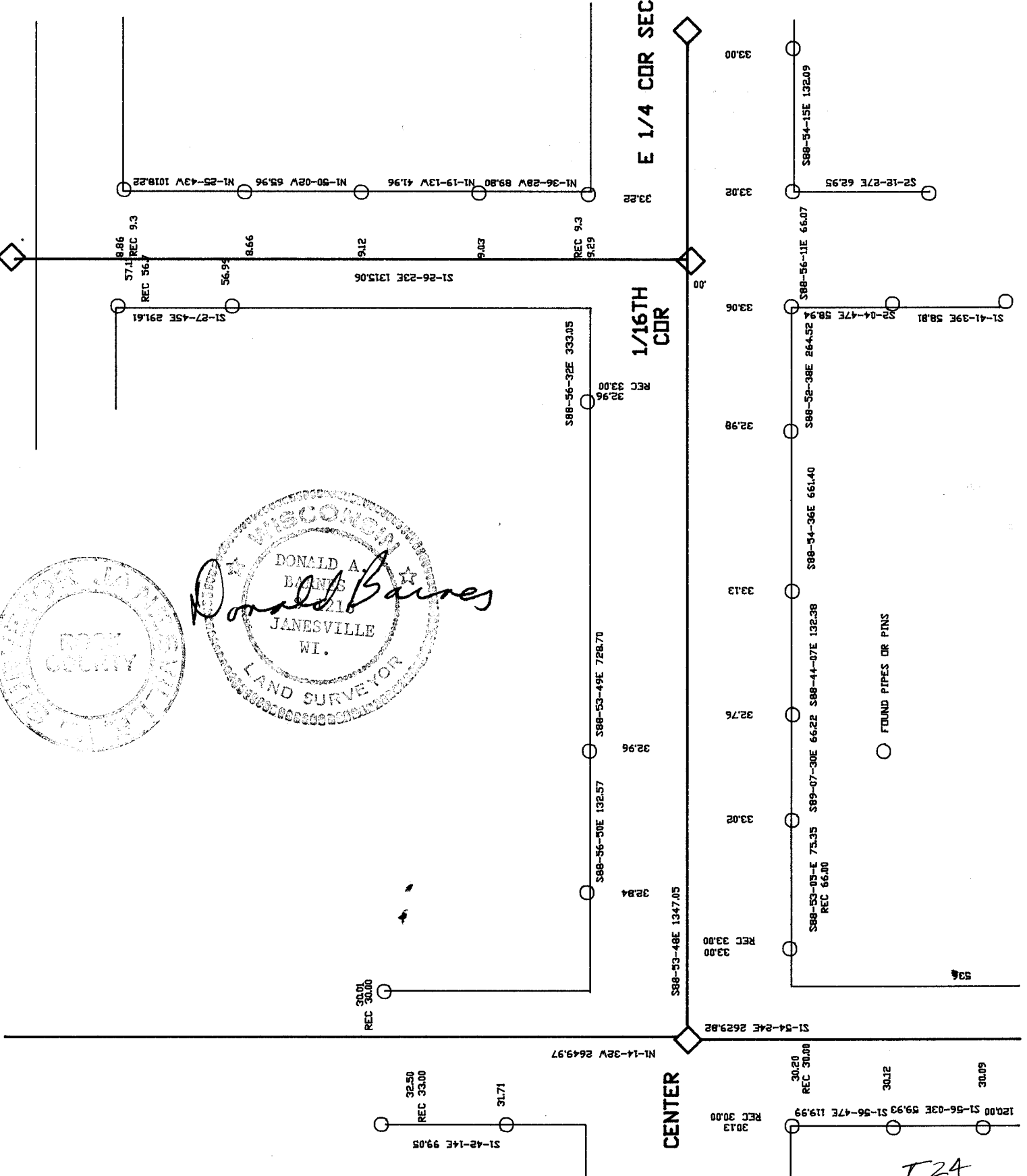
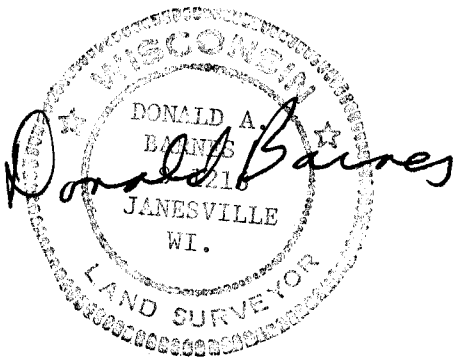
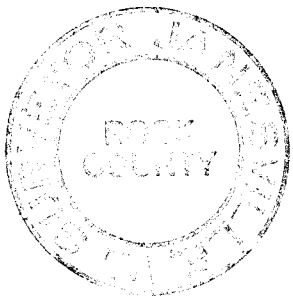
AFFIX YOUR LAND SURVEYOR SEAL

1/16TH CDR

E 1/4 CDR SEC 25

1/16TH CDR

CENTER



T24