

Paper weight-110# (minimum)

Black nonfading ink required

U.S. PUBLIC LAND SURVEY MONUMENT RECORD

For Public Land Survey Corners In:
T. 1 N. R. 12 E. 4th P.M.
CORNER CODE INDEX

WI ADMINISTRATIVE CODE A-E 7.08 REQUIREMENT
REV 10/23/2004 USMONREC.DWG

Beloit TWP
ROCK COUNTY WI

IF AVAILABLE
ROCK COUNTY COORDINATES PREFERRED

A	1	2	3	4	5	6	7	8	9	10	11	12	13	14	15	16	17	18	19	20	21	22	23	24	25	A
B																										B
C																										C
D																										D
E																										E
F																										F
G																										G
H																										H
J																										J
K																										K
L																										L
M																										M
N																										N
O																										O
P																										P
Q																										Q
R																										R
S																										S
T																										T
U																										U
V																										V
W																										W
X																										X
Y																										Y
Z																										Z

North _____ Elev. _____
 East _____
 Hor. Datum _____ Vert. Datum _____
 LATITUDE _____ ELLIPS. HT. _____
 LONGITUDE _____
 NAD83(91) _____ NETWORK ADJ. YR 2010
 GPS (X) _____ TRAVERSE (X) X
 BASED ON THE FOLLOWING CONTROL:

PLACE MONUMENT SYMBOL AT PROPER LOCATION ON ABOVE INDEX

CORNER MONUMENT WITNESS MONUMENT

(a) BEARINGS ARE BASED ON: --- ROCK COUNTY PROJECTION ---

FIELD BOOK _____ PAGE # _____ SHEET 1 OF 3
OR OBSERVATION SHEET _____

SHOW A PLAN VIEW DRAWING DEPICTING THE CORNER MONUMENT AND SURROUNDING PHYSICAL FEATURES, INCLUDING THE EXCAVATION AREA AND DEPTH.

PLANNING & ZONING COMMITTEE ADOPTED THIS FORM ON 12/2/1982

CORNER CODE V-3(2)

BE 602 N 1/4 COR SEC 31

(B) Describe any record evidence, monument evidence, occupational evidence, testimonial evidence or any other material evidence you considered, and whether the monument was found or placed.

- 1834 HARRISON WEST BET SEC 30 & 31 ON RAND.
495 BROOK 6.6' CRS S.W.
2640 TEMPY 1/4 SEC COR.
2838 BROOK 9.24' CRS S.E.
5217.3 INT. WEST BOUNDARY 10.56' SOUTH OF POST & ESTABLISH COR TO SEC 30 7 31. BEARINGS {BURR OAK 30 N15E 104.94' BURR OAK 18 S29E 19.14' COR. EAST BET 30 & 31
2577.3 QUARTER SEC COR. BUR OAK 14 N47W 25.08', RED OAK 18 S76E 104.28'
5217.3 SEC COR.
- 1931 SUNNY VOL 3 PG 189 DID NOT SEARCH FOR CORNER AT THIS POINT. ROAD AT THIS POINT WAS AN UNSTABLE MUD HOLE FOR YEARS. HAD REASON TO BELIEVE THAT THE CORNER IF THERE WAS ANY, WAS LOST YEARS AGO.
- 1959 BATTERMAN VOL 4 PG 6 2641.33 TO NE COR SEC 31, 2654.34 TO CENTER OF SEC 31. WPL N/S 187,672.52;E/W 2,237,256.51
- 1969 BATTERMAN VOL 4 PG 399 CROSS SCRIBED IN CEMENT. REFERENCED SAME.
- 1975 SPRAGUE MAP #6044 CALLS FOR 2654.44 TO CENTER OF SEC 31, 2641.51 TO SE COR SEC 30, & 2622.66 TO SW COR SEC 30
- 1976 BARNES VOL 5 PG 128 SET PK & REFERENCED SAME.
- 1979 BARNES VOL 6 PG 3 FOUND CUT "X" THAT AGREES WITH TIES. SET ALUM MON.
- 1983 LEE MAP #14004 CALLS FOR 2641.53 TO SE COR SEC 30, 2658.86 TO CENTER OF SEC 30, & ANGLE OF 88-10-00 AT SE COR SEC 30 FROM S 1/4 COR TO E 1/4 COR SEC 30. FOUND ALUM. MON.
- 1998 BARNES BELOIT TOWNSHIP REMON. PROJECT.
S88-45-01E 2641.38 [SPRAGUE 2641.51, BATTERMAN 2641.53] TO SE COR SEC 30,
N88-52-03W 2622.61 [SPRAGUE 2622.66] TO NW COR SEC 31,
S0-06-54E 2654.37 TO CENTER OF SEC 31,
5315.33 TO S 1/4 COR SEC 31,
ANGLE 179-53-11 [SPRAGUE 179-53-12] @ N 1/4 COR SEC 31 FROM SE COR SEC 25 NEWARK TO NE COR SEC 31
- 1998 BARNES V-3 ACCEPTED FOUND ALUM MON. REFERENCED SAME.
- 2009 GARDE V-3(1) FD ALUM. MON AT THE SOUTH QUARTER OF SEC 30. IN THE CENTER LINE OF STH 81 UNDER APPROXIMATELY 3" OF ASPHALT. TIE POINTS WERE RECOVERED AND FOUND TO DIFFER DIMENSIONALLY FROM THE TIE NOTES DATED OCT 19, 1998 BY DONALD BARNES. THE LOCATION OF THE ALUM. MON WAS ACCEPTED AS THE CORNER. THREE MONUMENT TIES FROM THE PREVIOUS TIE SHEET WERE RECOVERED AND FOUND TO DIFFER DIMENSIONALLY FROM THE PREVIOUS TIE SHEET. THE FOURTH TIE, (APPROXIMATELY DUE NORTH OF THE CORNER) WAS FOUND DISTURBED AND WAS OF NO USE. A POSSIBLE PROPERTY CORNER PIPE WAS FOUND NEAR THE LOCATION OF THE PREVIOUS TIE POINT, AND WAS USED TO REPLACE THE PREVIOUS TIE.

PRIOR TO GRINDING FOUND ALUM MON. 3" DEEP @ CENTER OF PAVEMENT. AFTER GRINDING FOUND ALUM. MON. WITH TOP IN TACT. THE MON. IS 2' SOUTH OF THE OLD CENTER LINE PAINT MARKING.

SHEET 1 OF 3

CORNER CODE V-5(2)

EMBOSSSED
SEAL

Donald Barnes
OCT 13 2010

BE 602 N 1/4 COR SEC 31

C) Was the corner restored through acceptance of (1) an obliterated evidence location, or, (2) a found perpetuated location?

ACCEPTED FD ALUM. MON.

D) Describe any material discrepancy between the location of the corner as restored or reestablished and the location of that corner as previously restored or reestablished by distance and direction. Show the discrepancy on the plan view drawing under (a), above. Show the distances between the corner as previously restored or reestablished and (1) the corner as restored or reestablished, and (2) to at least 4 of the witness monuments shown on the drawing in (a), above.

(E) Was the corner reestablished through lost corner proportionate methods? If so, show the method, including the directions and distances to other public land survey corners used as evidence or used for proportioning the corner location.

NO

I, **DONALD BARNES**, hereby certify that the corner location as identified by the corner code index was determined by me under my direction and control and that this U.S. Public Land Survey Monument Record is correct and complete to the best of my knowledge and belief.

Seal

Donald Barnes
Emboss

SHEET 2 OF 3

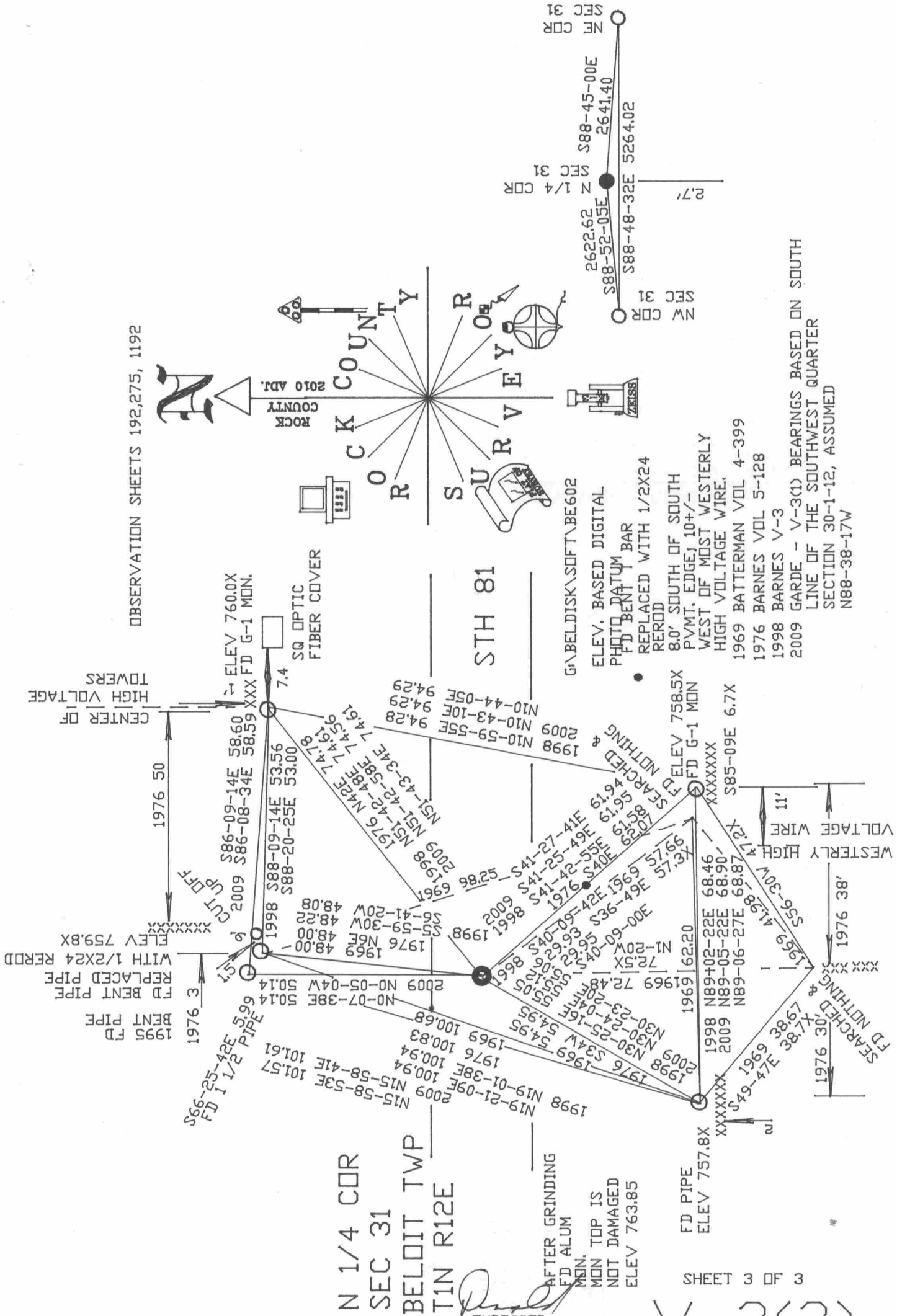
OCT 13, 2010

CORNER CODE

V-3(2)

A.E. 7.08 REQUIREMENT

OBSERVATION SHEETS 192,275, 1192



N 1/4 COR
 SEC 31
 BELDIT TWP
 TIN R12E

EMBOSSED SEAL

Blues
 Oct 13, 2010

AFTER GRINDING
 FD ALUM
 MON. TOP IS
 NOT DAMAGED
 ELEV 763.85

SHEET 3 OF 3

V-3(2)

BEARINGS BASED ON SOUTH
 LINE OF THE SOUTHWEST QUARTER
 SECTION 30-1-12, ASSUMED
 N88-38-17W

G:\BELDISK\SOFT\BE602

ELEV. BASED DIGITAL
 PHOTO DATUM
 FD BENT PIPE
 REPLACED WITH 1/2X24
 REROD

8.0' SOUTH OF SOUTH
 PVMT. EDGEJ 10+/-
 WEST OF MOST WESTERLY
 HIGH VOLTAGE WIRE.

1969 BATTERMAN VOL 4-399
 1976 BARNES VOL 5-128
 1998 BARNES V-3

2009 GARDE - V-3(1)
 LINE OF THE SOUTHWEST QUARTER
 SECTION 30-1-12, ASSUMED
 N88-38-17W