

U.S. PUBLIC LAND SURVEY MONUMENT RECORD

For Public Land Survey Corners In:

WI ADMINISTRATIVE CODE A-E 7.08 REQUIREMENT

T. 1 N. - R. 12 E. of the 4th P.M.

CORNER CODE INDEX

(PLACE "◆" SYMBOL AT PROPER PLSS CORNER LOCATION)

A	1	2	3	4	5	6	7	8	9	10	11	12	13	14	15	16	17	18	19	20	21	22	23	24	25
B																									
C	6																								
D		5																							
E			4																						
F				3																					
G					2																				
H																									
I																									
J																									
K																									
L																									
M																									
N																									
O																									
P																									
Q																									
R																									
S																									
T																									
U																									
V																									
W																									
X																									
Y																									
Z																									
	1	2	3	4	5	6	7	8	9	10	11	12	13	14	15	16	17	18	19	20	21	22	23	24	25

BELOIT TWP

ROCK COUNTY WI

ROCK COUNTY COORDINATES
(GNSS DERIVED VIA WISCORS)

North 233232.83
East 493852.30
Elev. 756.7, (GNSS derived DISK elevation)

Hor. Datum NAD83 (NA2011)

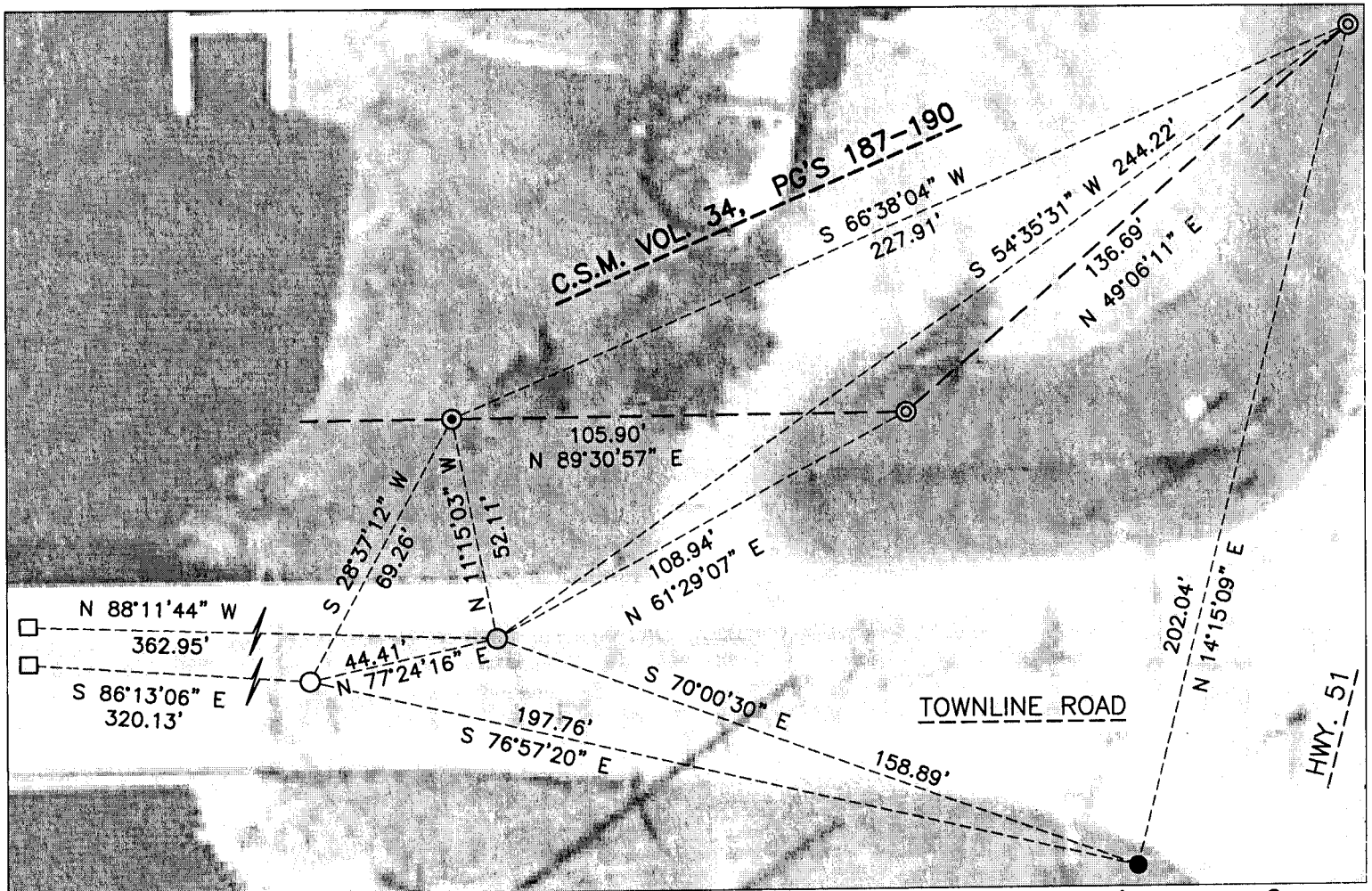
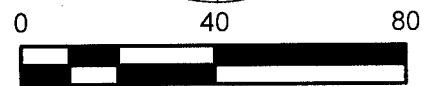
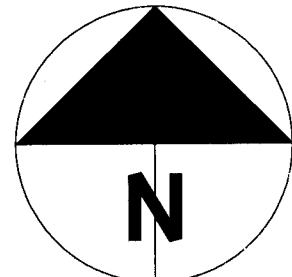
Vert. Datum NAVD88

BASIS OF BEARINGS

Wisconsin County Coordinate System
Rock County Datum

(a) LEGEND

- - 5/8" x 24" REBAR SET, (RED CAP W/"PLSS WITNESS")
- - SURVEY NAIL SET OVER WDOT DISK IN MONUMENT BOX
- ⊙ - IRON REBAR FOUND
- ⊗ - IRON PIPE FOUND
- - WDOT DISK FOUND. HMP MONUMENT 1H24, (PID DF9824)



SHEET 1 OF 2

FIELD BOOK 2013 PAGE # 37

CORNER CODE A-23(1)

B) Describe any record evidence, monument evidence, occupational evidence, testimonial evidence or any other material evidence you considered, and whether the monument was found or placed.

There is much history with this corner and County Surveyors have disagreed on its location over the years. Both corners are monumented with the most recent corner, (Easterly), having its coordinates noted on this tie-sheet. Distances from the N1/4 to the NE of Section 1 have differed however, the most recent tie-sheet prepared by Don Barnes, (1989), accepted the location as set by Combs, (1985), as the dimension to the NE corner of 4 is in harmony with a position set by Shimeall, (1948), which is in harmony with Ruger, (1876). Subsequent coordinates published by Barnes, (1995), appear to be for the corner to the West, NOT the corner accepted in 1989. I surveyed WDOT disks in monument boxes at both locations a prior to them being paved over and the survey nails I set perpetuate the same.

C) Was the corner restored through acceptance of (1) an obliterated evidence location, or, (2) a found perpetuated location?

The location as accepted by Barnes, (Easterly), is in harmony with the Shimeall position which is within 2 feet, +/-, of Ruger, (1876). A tie-sheet from 1956 by Batterman does not state how the location of the Westerly monument was set and is different from both Ruger and Shimeall by 42 feet, +/- . Based on the documented history of this corner, my opinion is that the Easterly location is the more probable location.

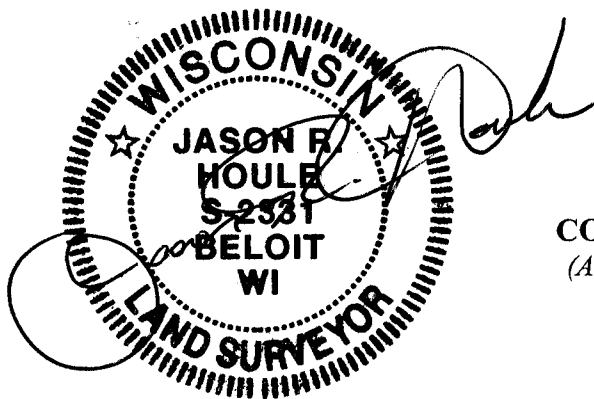
D) Describe any material discrepancy between the location of the corner as restored or reestablished and the location of that corner as previously restored or reestablished by distance and direction. Show the discrepancy on the plan view drawing under (a), above. Show the distances between the corner as previously restored or reestablished and (1) the corner as restored or reestablished, and (2) to at least 4 of the witness monuments shown on the drawing in (a), above.

Explained above.

(E) Was the corner reestablished through lost corner proportionate methods? If so, show the method, including the directions and distances to other public land survey corners used as evidence or used for proportioning the corner location.

N/A

I, Jason R. Houle, hereby certify that the corner location as identified by the corner code index was determined by me under my direction and control and that this U.S. Public Land Survey Monument Record is correct and complete to the best of my knowledge and belief.



CORNER CODE: A-23(1)
(A.E. 7.08 REQUIREMENT)