

Paper weight-110# (minimum)

Black nonfading ink required

U.S. PUBLIC LAND SURVEY MONUMENT RECORD

For Public Land Survey Corners In:

WI ADMINISTRATIVE CODE A-E 7.08 REQUIREMENT

T. 1 N. R. 12 E. 4th P.M.

REV 10/23/2004 USMONREC.DWG

CORNER CODE INDEX

BELOIT TWP

ROCK COUNTY WI

IF AVAILABLE

ROCK COUNTY COORDINATES PREFERRED

A	1	2	3	4	5	6	7	8	9	10	11	12	13	14	15	16	17	18	19	20	21	22	23	24	25	A	
B																										B	
C	6						5											4								C	
D																											D
E																											E
F																											F
G	7						8																				G
H																											H
J																											J
K																											K
L	18						17																				L
M																											M
N																											N
O																											O
P	19						20																				P
Q																											Q
R																											R
S																											S
T	30						29																				T
U																											U
V																											V
W																											W
X	31						32																				X
Y																											Y
Z																											Z

North _____ Elev. _____

East _____

Hor. Datum _____ Vert. Datum _____

LATITUDE _____ ELLIPS. HT. _____

LONGITUDE _____

NAD83(91) _____ NETWORK ADJ. YR _____

GPS (X) _____ TRAVERSE (X) _____

BASED ON THE FOLLOWING CONTROL:

◆ CORNER MONUMENT

○ WITNESS MONUMENT

BEARINGS ARE BASED ON: (a) -----

FIELD BOOK _____ PAGE # _____

SHEET 1 OF 3

SHOW A PLAN VIEW DRAWING DEPICTING THE CORNER MONUMENT AND SURROUNDING PHYSICAL FEATURES, INCLUDING THE EXCAVATION AREA AND DEPTH.

PLANNING & ZONING COMMITTEE ADOPTED THIS FORM ON 12/2/1982

CORNER CODE R-17 (2)

BE589 SWCORSEC23

(B) Describe any record evidence, monument evidence, occupational evidence, testimonial evidence or any other material evidence you considered, and whether the monument was found or placed.

- 1834 ORIGINAL SURVEY COR. TO SEC 22,23,26,27 ON GROUND SLOPING NORTHWARDLY. SET A POST & RAISED A MOUND.
- 1859 HOBART VOL 1 PG 120 CALLS FOR CORNER BUT STATES NOTHING ABOUT IT. N88-20E 2534.4 TO S 1/4 COR SEC 23,N2E 2649.90 TO W 1/4 COR SEC 23, & N2E 5315.64 TO NW COR SEC 23, S2W 2643.63 TO W 1/4 COR SEC 26.
- 1929 BATTERMAN VOL 3 PG 169 FOUND SAND STONE WITH HH ON N & S SIDES. GAS PIPE 27.42' TO THE NORTH, GAS PIPE 88.96 TO THE SOUTH, EASTERLY 1597.93 FROM GAS PIPE ON NORTH SIDE TO PIPE THAT IS 249.83 FROM THE WEST R/W LINE OF AFTON RD. 1601.14 FROM GAS PIPE ON SOUTH SIDE TO PIPE THAT IS 289.51 FROM THE WEST R/W LINE OF AFTON RD. SOUTHERLY GAS PIPE IS 404.40 NORTH OF ANOTHER GAS PIPE.
- 1960 BATTERMAN BOOTMAKER SUB BK 21 PG 1 CALLS FOR 2622.83 TO LOT IN RICES COUNTRY ACRES THAT IS JUST SOUTH OF THE W 1/4 COR SEC 23.
- 1960 BATTERMAN CSM VOL 1 PG 46 CALLS FOR AN EXISTING MONUMENT AT BURTON & HACKETT ST. NORTH 528' TO POB OF SURVEY.
- 1970 SHARKEY CSM 1 PG 318
- 1979 LEUENBERGER MAP 06483 STATES NOTHING ABOUT CORNER. NORTH 728.12' TO P.O.B ON NORTH R/W OF GREEN DRIVE.
- 19?? LEE MAP #11946 STATES NOTHING ABOUT CORNER. PIPE IS 27.42 NORTH OF CORNER, BURTON ST IS 80' R/W, & 35 EAST R/W TO THE NORTH.
- 198? LEE CSM 12 PG 188 SYMBOL SHOWS A IRON PIN. SOUTH R/W LINE IS 40 FROM THE CORNER,PIPE IS 27.42 NORTH OF THE SEC CORNER,& EAST R/W LINE IS 35 EAST OF SECTION CORNER.
- 1982 LEUENBERGER CSM 11 PG 69 CALLS FOR CORNER BUT STATES NOTHING ABOUT IT. NORTH 984.53' TO CENTER OF FROEBEL DR.
- 1998 BARNES R-17 FOUND R/R WITH DRILL HOLE 2.5' NORTH OF CENTER OF PAVEMENT. IN HARMONY WITH CALL DISTANCE TO NORTH 2" PIPE.
- 2008 BARNES R-17(1) FD R/R SPIKE 0.2' DEEP & REFERENCE MONUMENTS. MONUMENT WILL BE DESTROYED BY ROAD CONSTRUCTION. PLACED ADDITIONAL REFERENCE MONUMENTS OUT SIDE OF THE LIMITS OF THE RIGHT OF WAY AND CONSTRUCTION LIMITS.

FD REFERENCE MONUMENTS AS SHOW. SET LARGE DURA NAIL. FROM REF. MONUMENTS ON NEW PVMT. ROAD CUT IS ABOUT 1.7'. COR IS 4.7' SOUTH OF CENTER OF PVMT.

C) Was the corner restored through acceptance of (1) an obliterated evidence location, or, (2) a found perpetuated location?

ACCEPTED FOUND PERPETUATED LOCATION.

Donald
Barnes

EMBOSSSED SEAL

SHEET 1 OF 3
CORNER CODE R-17(2)

8-10-2009

BE5B9 SWCORSEC23

D) Describe any material discrepancy between the location of the corner as restored or reestablished and the location of that corner as previously restored or reestablished by distance and direction. Show the discrepancy on the plan view drawing under (a), above. Show the distances between the corner as previously restored or reestablished and (1) the corner as restored or reestablished, and (2) to at least 4 of the witness monuments shown on the drawing in (a), above.

FD NONE

(E) Was the corner reestablished through lost corner proportionate methods? If so, show the method, including the directions and distances to other public land survey corners used as evidence or used for proportioning the corner location

NO.

I, **Donald Barnes**, hereby certify that the corner location as identified by the corner code index was determined by me under my direction and control and that this U.S. Public Land Survey Monument Record is correct and complete to the best of my knowledge and belief.

Seal

Donald Barnes

Emboss

8-10-2009

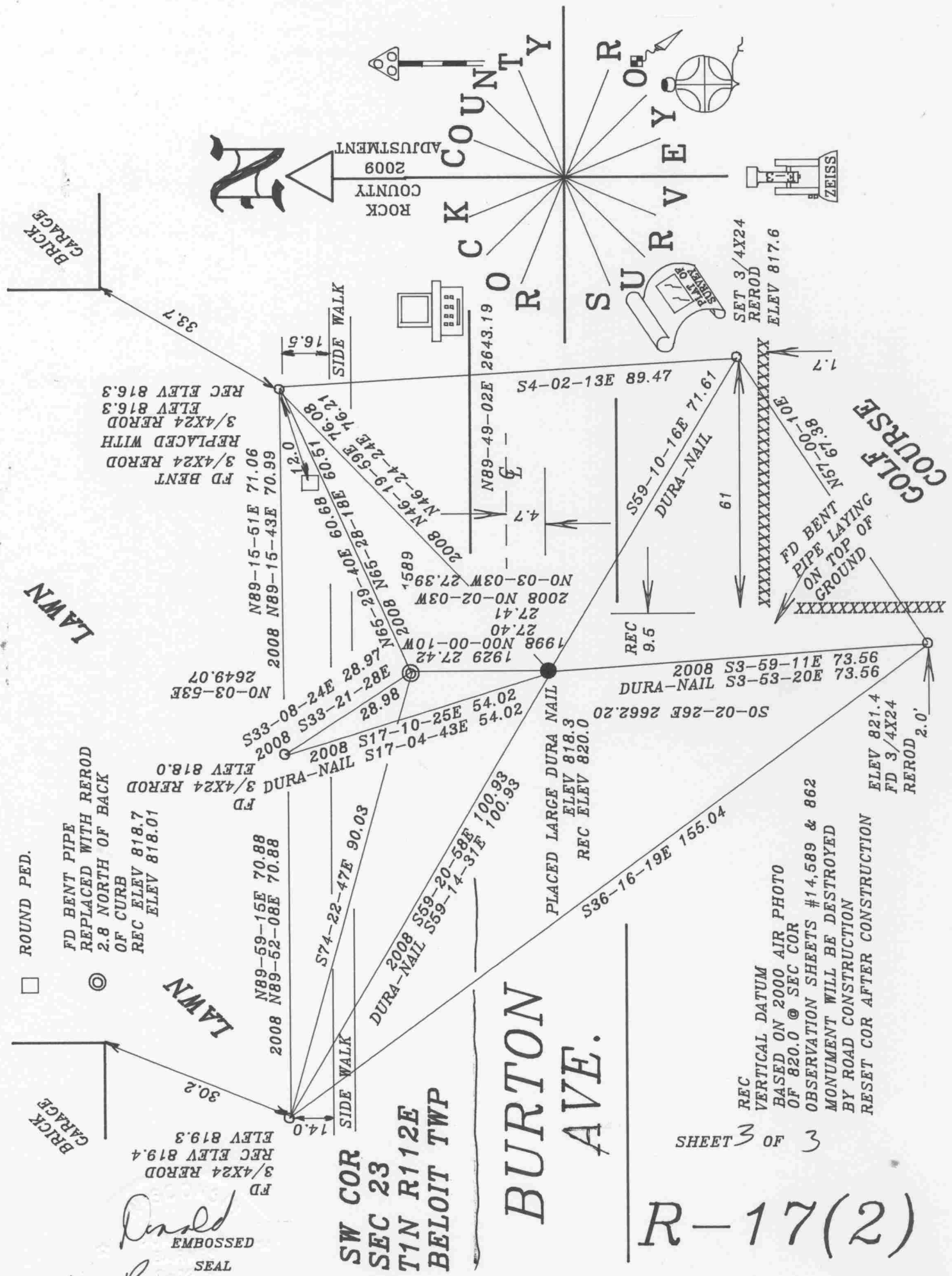
SHEET 2 OF 3

FIELD WORK 5/12/2009

CORNER CODE

R-17(2)

A.E. 7.08 REQUIREMENT



ROUND PED.

FD BENT PIPE
REPLACED WITH REROD
2.8 NORTH OF BACK
OF CURB
REC ELEV 818.7
ELEV 818.01

FD
REC ELEV 819.4
ELEV 819.3
3/4X24 REROD

Donald Barnes
EMBOSSSED SEAL
8/10/2009

SW COR
SEC 23
T1N R112E
BELOIT TWP

BURTON
AVE.

SHEET 3 OF 3

R-17(2)

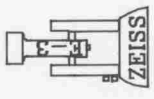
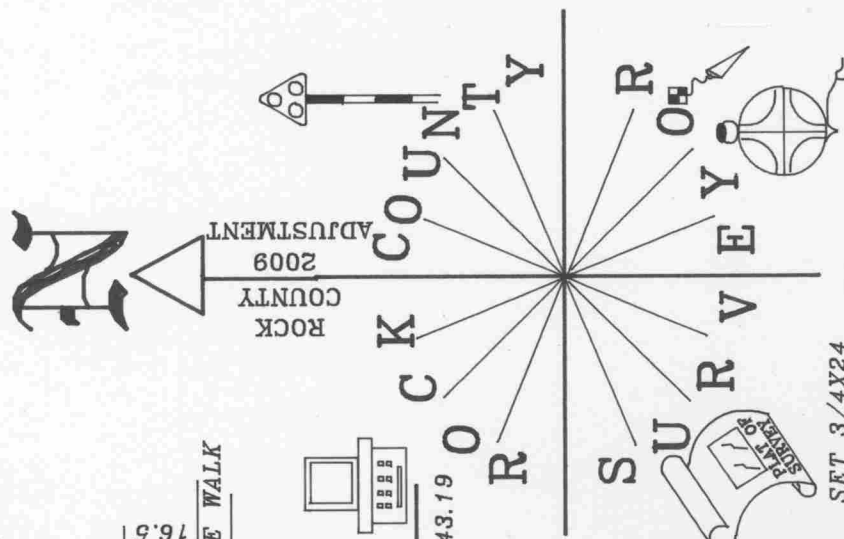
REC
VERTICAL DATUM
BASED ON 2000 AIR PHOTO
OF 820.0 @ SEC COR
OBSERVATION SHEETS #14.589 & 862
MONUMENT WILL BE DESTROYED
BY ROAD CONSTRUCTION
RESET COR AFTER CONSTRUCTION

ELEV 821.4
FD 3/4X24
REROD 2.0'

GOLF COURSE

FD BENT
PIPE LAYING
ON TOP OF
GROUND

SET 3/4X24
REROD
ELEV 817.6



BRICK GARAGE

LAWN

LAWN

SIDE WALK

SIDE WALK

PLACED LARGE DURA NAIL
ELEV 818.3
REC ELEV 820.0

DURA-NAIL
S36-16-19E 155.04

DURA-NAIL
S59-10-16E 71.61

DURA-NAIL
S59-10-16E 71.61

DURA-NAIL
S3-53-53 8002

DURA-NAIL
S3-53-53 8002

DURA-NAIL
S0-02-26E 2662.20

DURA-NAIL
S33-59-11E 73.56

DURA-NAIL
S33-59-11E 73.56

DURA-NAIL
S33-59-11E 73.56

DURA-NAIL
S33-59-11E 73.56

DURA-NAIL
S33-59-11E 73.56

DURA-NAIL
S33-59-11E 73.56

DURA-NAIL
S33-59-11E 73.56

DURA-NAIL
S33-59-11E 73.56

DURA-NAIL
S33-59-11E 73.56

DURA-NAIL
S33-59-11E 73.56

DURA-NAIL
S33-59-11E 73.56