

Paper weight-110# (minimum)

Black nonfading ink required

# U.S. PUBLIC LAND SURVEY MONUMENT RECORD

For Public Land Survey Corners In:

WI ADMINISTRATIVE CODE A-E 7.08 REQUIREMENT

T. N. R. 12 E. 4th P.M.

REV 10/23/2004 USMONREC.DWG

CORNER CODE INDEX

BELoit TWP

ROCK COUNTY WI

IF AVAILABLE

ROCK COUNTY COORDINATES PREFERRED

A	1	2	3	4	5	6	7	8	9	10	11	12	13	14	15	16	17	18	19	20	21	22	23	24	25	A
B		6					5					4				3				2				1		B
C																										C
D																										D
E																										E
F																										F
G																										G
H																										H
J																										J
K																										K
L																										L
M																										M
N																										N
O																										O
P																										P
Q																										Q
R																										R
S																										S
T																										T
U																										U
V																										V
W																										W
X																										X
Y																										Y
Z																										Z

North \_\_\_\_\_ Elev. \_\_\_\_\_

East \_\_\_\_\_

Hor. Datum \_\_\_\_\_ Vert. Datum \_\_\_\_\_

LATITUDE \_\_\_\_\_ ELLIPS. HT. \_\_\_\_\_

LONGITUDE \_\_\_\_\_

NAD83(91) \_\_\_\_\_ NETWORK ADJ. YR \_\_\_\_\_

GPS (X) \_\_\_\_\_ TRAVERSE (X) \_\_\_\_\_

BASED ON THE FOLLOWING CONTROL:

◆ CORNER MONUMENT

○ WITNESS MONUMENT

BEARINGS ARE BASED ON: \_\_\_\_\_

FIELD BOOK \_\_\_\_\_ PAGE # \_\_\_\_\_

SHEET 1 OF 2

SHOW A PLAN VIEW DRAWING DEPICTING THE CORNER MONUMENT AND SURROUNDING PHYSICAL FEATURES, INCLUDING THE EXCAVATION AREA AND DEPTH.

PLANNING & ZONING COMMITTEE ADOPTED THIS FORM ON 12/2/1982

CORNER CODE R-15(2)

BE588

(B) Describe any record evidence, monument evidence, occupational evidence, testimonial evidence or any other material evidence you considered, and whether the monument was found or placed.

- 1834 HARRISON EAST ON RANDOM BET. SECS 22 & 27  
2640 TEMPY QUARTER SEC COR.  
5131.5 TO THE TRAIL TO TURTLE VILLAGE ON LEFT BANK OF  
ROCK RIVER HERETOFORE MENTIONED AS LEADING  
FROM PRAIRIE DE CHEIN TO CHICAGO  
5220.6 INT E BDY 14.52' NORTH OF POST.
- 1920 BATTERMAN BK 9 PG 40. S89-27-20E 1307.45 TO THE CENTER  
LINE OF MCKINLEY ST. AND S0-15-40W 2657.87 TO CENTER OF  
SECTION 27 AT TOWNLINE RD & WHIPPLE ST.
- 1955 SHIMEALL SUBDIVISION PLAT BK 17 PG 3 FOUND 5/8 PIN.  
1956 SHIMEALL SUBDIVISION PLAT BK 17 PG 29 FOUND 5/8 PIN  
1957 TRIELOFF SUBDIVISION PLAT BK 18 PG 34 FOUND MONUMENT BUT  
STATED NOTHING ABOUT IT.
- 1957 SHIMEALL SUBDIVISION PLAT BK 18 PG 35 FOUND 5/8 PIN. ANGLE  
OF 90-23-55 FROM S 1/4 COR SEC 27 TO NW COR SEC 27 AT N 1/4  
COR SEC 27.  
SHOWS SHORT TIES TO BLOCK CORNER.
- 1962 SHIMEALL SUBDIVISION PLAT BK 21 PG 26 FOUND IRON PIN.  
1962 SHIMEALL SUBDIVISION PLAT BK 21 PG 27 FOUND 1" PIN.  
1962 BATTERMAN CSM V 1 PG 72 FOUND 1" PIPE  
1970 BATTERMAN CSM V 1 PG 339 FOUND PIPE  
1978 LEE CSM V 8 PG 338 CONNECTED TO CORNER.  
1997 BARNES R-15 MAN HOLE COVERS IN BURTON INDICATES SEWER  
LINE DESTROYED RECORD MONUMENTS. USED LOCAL RECORD  
PROPERTY CORNERS TO RECONSTRUCT LOCATION OF CORNER.

JULY-FOUND R/R SPIKE WITH DRILL HOLE IN SE TOP OF R/R HEAD &  
REFERENCE MONUMENTS. OCT - NEW PVMT SURFACE. R/R SPIKE  
DESTROYED. PLACED STEEL "SURVEY SPIKE" 0.3' NORTH OF CENTER OF  
PVMT SEAM. TOP OF SPIKE BROKE OFF.

C) Was the corner restored through acceptance of (1) an obliterated evidence location, or, (2) a found perpetuated location?

ACCEPTED FOUND R/R SPIKE WITH DRILL HOLE IN SE TOP OF R/R HEAD.

D) Describe any material discrepancy between the location of the corner as restored or reestablished and the location of that corner as previously restored or reestablished by distance and direction. Show the discrepancy on the plan view drawing under (a), above. Show the distances between the corner as previously restored or reestablished and (1) the corner as restored or reestablished, and (2) to at least 4 of the witness monuments shown on the drawing in (a), above.

NONE

(E) Was the corner reestablished through lost corner proportionate methods? If so, show the method, including the directions and distances to other public land survey corners used as evidence or used for proportioning the corner location.

NO

I, **Donald Barnes**, hereby certify that the corner location as identified by the corner code index was determined by me under my direction and control and that this U.S. Public Land Survey Monument Record is correct and complete to the best of my knowledge and belief.

Seal  
*Donald Barnes*

SHEET 1 OF 2

Emboss

OCT 20, 2008

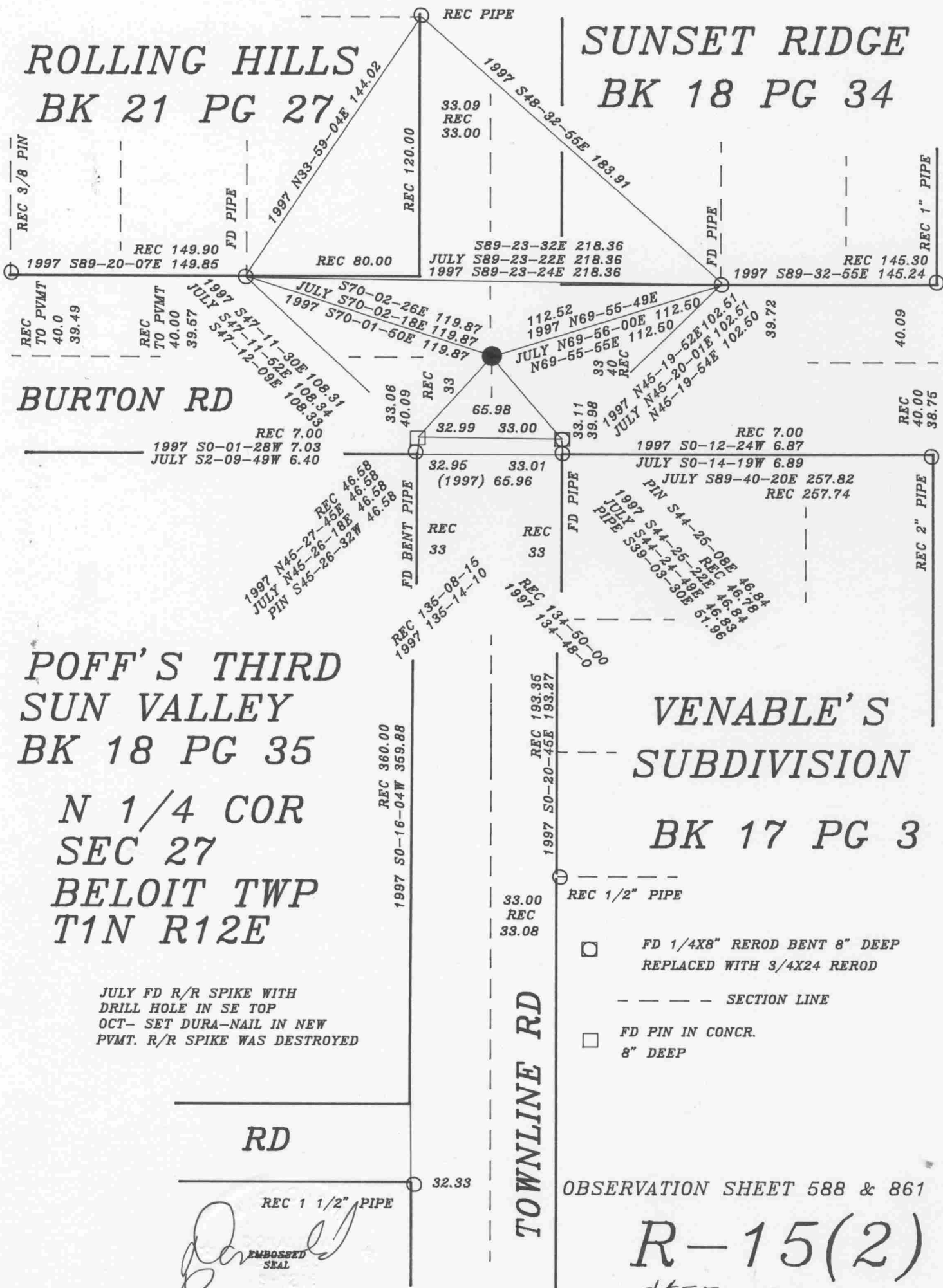
CORNER CODE

**R-15(2)**

A.E. 7.08 REQUIREMENT

ROLLING HILLS  
BK 21 PG 27

SUNSET RIDGE  
BK 18 PG 34



JULY FD R/R SPIKE WITH  
DRILL HOLE IN SE TOP  
OCT- SET DURA-NAIL IN NEW  
PVMT. R/R SPIKE WAS DESTROYED

RD  
REC 1 1/2" PIPE  
32.33  
EMBOSSED SEAL  
Barney

- REC 1/2" PIPE
- FD 1/4X8" REROD BENT 8" DEEP  
REPLACED WITH 3/4X24 REROD
- SECTION LINE
- FD PIN IN CONCR.  
8" DEEP

OBSERVATION SHEET 588 & 861

R-15(2)  
SHEET 2 OF 2

OCT 20 2008