

Paper weight-110# (minimum)

Black nonfading ink required

# U.S. PUBLIC LAND SURVEY MONUMENT RECORD

For Public Land Survey Corners In:

WI ADMINISTRATIVE CODE A-E 7.08 REQUIREMENT

T. 1 N. R. 12 E. 4th P.M.

REV 10/23/2004 USMONREC.DWG

CORNER CODE INDEX

BELCOTT TWP

ROCK COUNTY WI

IF AVAILABLE  
ROCK COUNTY COORDINATES PREFERRED

A	1	2	3	4	5	6	7	8	9	10	11	12	13	14	15	16	17	18	19	20	21	22	23	24	25	A
B																										B
C	6																									C
D																										D
E																										E
F																										F
G	7	8																								G
H																										H
J																										J
K																										K
L	18	17																								L
M																										M
N																										N
O																										O
P	19	20																								P
Q																										Q
R																										R
S																										S
T	30	29																								T
U																										U
V																										V
W																										W
X	31	32																								X
Y																										Y
Z																										Z
	1	2	3	4	5	6	7	8	9	10	11	12	13	14	15	16	17	18	19	20	21	22	23	24	25	

North \_\_\_\_\_ Elev. \_\_\_\_\_

East \_\_\_\_\_

Hor. Datum \_\_\_\_\_ Vert. Datum \_\_\_\_\_

LATITUDE \_\_\_\_\_ ELLIPS. HT. \_\_\_\_\_

LONGITUDE \_\_\_\_\_

NAD83(91) \_\_\_\_\_ NETWORK ADJ. YR \_\_\_\_\_

GPS (X) \_\_\_\_\_ TRAVERSE (X) \_\_\_\_\_

BASED ON THE FOLLOWING CONTROL:

◆ CORNER MONUMENT

○ WITNESS MONUMENT

BEARINGS ARE BASED ON: (a) -----

FIELD BOOK \_\_\_\_\_ PAGE # \_\_\_\_\_

SHEET 1 OF 3

SHOW A PLAN VIEW DRAWING DEPICTING THE CORNER MONUMENT AND SURROUNDING PHYSICAL FEATURES, INCLUDING THE EXCAVATION AREA AND DEPTH.

PLANNING & ZONING COMMITTEE ADOPTED THIS FORM ON 12/2/1982

CORNER CODE R-21 (2)

B

(B) Describe any record evidence, monument evidence, occupational evidence, testimonial evidence or any other material evidence you considered, and whether the monument was found or placed.

- 1834 HARRISON EAST BETWEEN SEC 23 & 26
  - 2442 ENTER RIVER BOTTOM
  - 2514.6 TO A TRAIL SUPPOSED TO BE THAT OF GEN ALEXANDER'S BRIGADE OF ILLINOIS MALITIA IN 1832
  - 2640 QUARTER SEC COR. SET A POST & RAISED A MOUND
  - 3519.12 INT. THE RIGHT BANK OF ROCK RIVER SET MEANDER POST BUR OAK 18 S82W 869 NO OTHER NEAR
  
- 1836 LYON NORTH BETWEEN 25 & 26
  - 2376 INDIAN TRAIL NE & SW
  - 2640 SET QUARTER SECTION POST BUR OAK 15 N77E 60 BUR OAK 10 S73 1/2W 75
  - 3300 ENTERED PRAIRIE
  - 5280 SET POST CORNER TO SECTIONS 23, 24, 25, & 26 BUR OAK 8 N21W 107 WHITE OAK 18 S78 1/2W 321
  
- EAST BETWEEN SECTIONS 24 & 25
  - 198 INDIAN TRAIL LEADING N & S
  - 5305.08 INTERSECTED RANGE LINE 35.64' NORTH OF POST WEST CORRECTED BETWEEN SECTIONS 24 & 25
  - 2652.54 SET QUARTER SECTION POST & RAISED A MOUND OF EARTH & SOD 4 FEET SQUARE & 2 1/2 FEET HIGH
  - 5305.08 SECTION CORNER
  
- WEST TRUE LINE BETWEEN SECTION 23 & 26
  - 792 ENTERED ROCK RIVER BOTTOM
  - 1056 INDIAN TRAIL LEADING N & S
  - 1465.2 SET POST ON LEFT BANK OF ROCK RIVER BEARS S.S.W BUR OAK 22 S34E 85 BUR OAK 14 NB2E
  
- 136
  - 1829.52 TO RIGHT BANK OF RIVER POST
- 1878 RUGER VOL 2 PG 239 FOUND STAKE, ALSO STUMPS OF B.T.s.
- 1882 RUGER FOUND STAKE SURROUNDED BY THREE LIMESTONES. ONE OF THEM BURNT, ALSO FOUND STUMP OF N.W. B.T. SHOWS 2630.1 TO W 1/4 CORNER OF SECTION 25.
- 1910 CALDWELL SUB "PERRIGO PLACE" BK 7 PG 42. CALLS FOR THE SW CORNER OF SEC 24 BUT STATES NOTING ABOUT IT. ALSO CALLS FOR THE SOUTH LINE OF SEC 24 AND BEGINNING OF SUB 997' EAST OF THE SW COR SEC 24.
- 1917 BATTERMAN CITY OF БЕЛОIT NOTES. CALLS FOR LIMESTONE MONUMENT. CALLS FOR 896.35 TO CENTER OF RIVER RD., 849.10 TO NORTH LINE OF HENRY ST., & 2632.02 TO 2 1/2 GAS PIPE AT THE W 1/4 COR SEC 25.
- 1929 BATTERMAN VOL 3 PG 173 FOUND LIMESTONE AT CORNER.
- 1930 BATTERMAN VOL 3 PG 173 FOUND LIMESTONE.
- 1939 SUNNY VOL 3 PG 428 FOUND STONE.
- 1942 BATTERMAN BK 12 PG 35. NEWFIELD'S ADDITION. CALLS FOR A STONE MONUMENT AT THE CORNER. PLAT SHOWS DISTANCES AND BEARINGS TO STONE.
- 1956 SHIMEALL SUB FROEBEL HEIGHTS CALLS FOR A STONE 990.40 NORTH OF THE SW COR SEC 24.
- 1984 BARNES N-21 ESTABLISHED CORNER FROM MONUMENTS THAT I FOUND IN NEWFIELD'S ADDITION.

SHEET 1 OF 3

CORNER CODE ~~N-21~~(1)

R

Donald Barnes  
 9/25/08

BE591

FD R/R SPIKE WITH DRILL HOLE THAT WAS IN HARMONY WITH FD REFERENCE TIES.

C) WAS THE CORNER RESTORED THROUGH ACCEPTANCE OF (1) AN OBLITERATED EVIDENCE LOCATION, OR, (2) A FOUND PERPETUATED LOCATION?  
RESTORED THROUGH ACCEPTANCE OF OBLITERATED EVIDENCE LOCATION.

D) Describe any material discrepancy between the location of the corner as restored or reestablished and the location of that corner as previously restored or reestablished by distance and direction. Show the discrepancy on the plan view drawing under (a), above. Show the distances between the corner as previously restored or reestablished and (1) the corner as restored or reestablished, and (2) to at least 4 of the witness monuments shown on the drawing in (a), above.  
NONE

(E) Was the corner reestablished through lost corner proportionate methods? If so, show the method, including the directions and distances to other public land survey corners used as evidence or used for proportioning the corner location.  
NO

I, **Donald Barnes**, hereby certify that the corner location as identified by the corner code index was determined by me under my direction and control and that this U.S. Public Land Survey Monument Record is correct and complete to the best of my knowledge and belief.

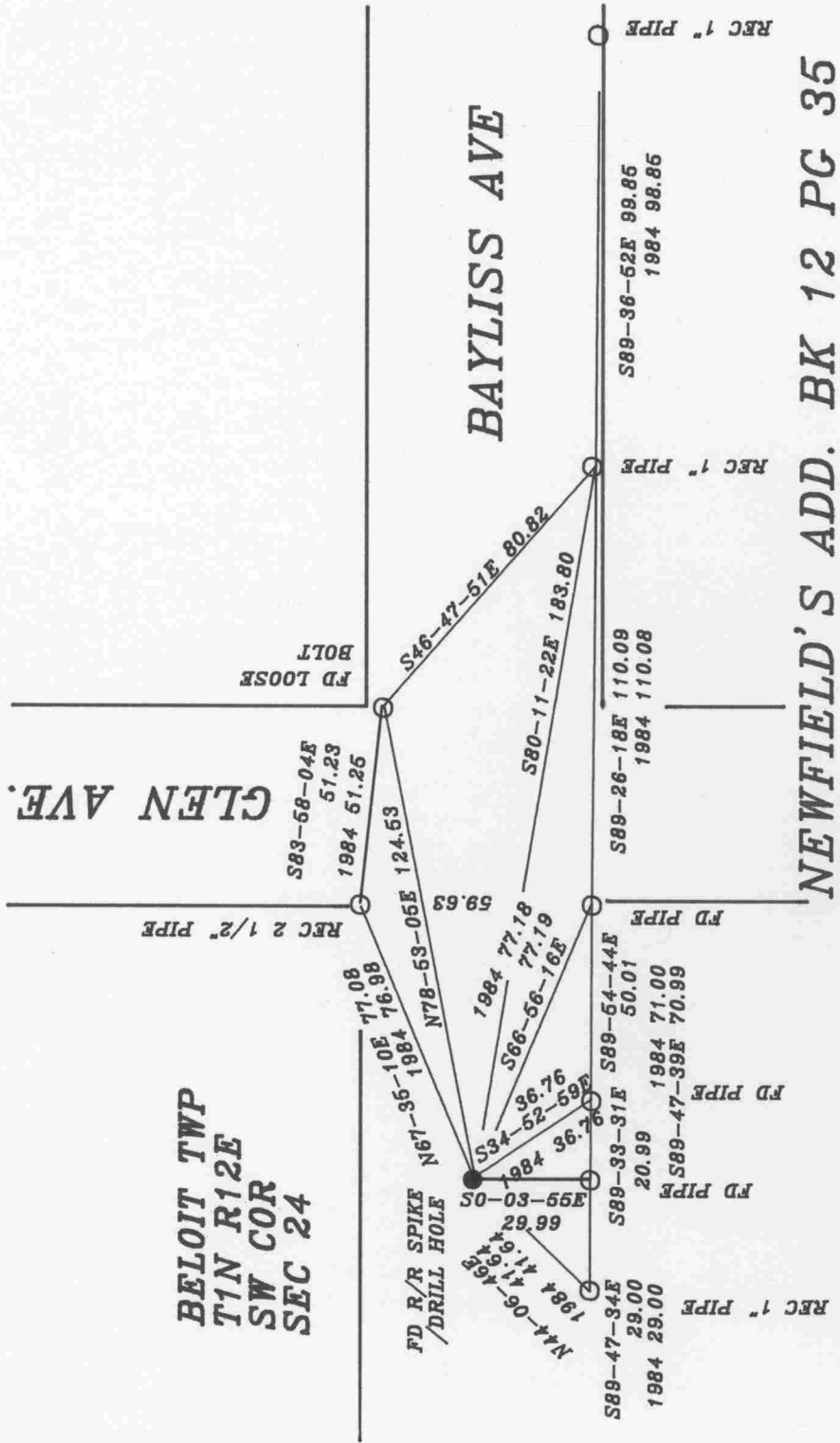
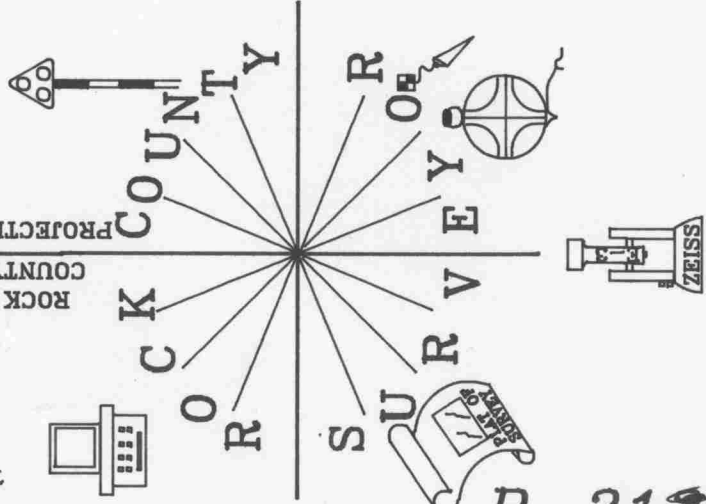
Seal  
Donald Barnes  
Embloss  
9/25/08

SHEET 2 OF 3

CORNER CODE ~~1~~-21(1)  
A.E. 7.08 REQUIREMENT R

ROCK COUNTY  
 PROJECTION  
 COUNTY  
 R O C K  
 C O U N T Y  
 S U R V E Y  
 ZEISS  
 R-212(1)

Donald Barnes  
 IMBOSSED SEAL  
 9/25/08



OBSERVATION SHEET #355, R-21, & FB #1 PG 70