

U.S. PUBLIC LAND SURVEY MONUMENT RECORD

For Public Land Survey Corners in:

WI ADMINISTRATIVE CODE A-E 7.08 REQUIREMENT

T. 1 N., R. 2 E 4th P.M.

CORNER CODE INDEX

A	1	2	3	4	5	6	7	8	9	10	11	12	13	14	15	16	17	18	19	20	21	22	23	24	25
B	6																								
C		5																							
D			4																						
E				3																					
F					2																				
G						1																			
H							18																		
I								17																	
J									16																
K										15															
L											14														
M												13													
N													12												
O														11											
P															10										
Q																9									
R																	8								
S																		7							
T																			6						
U																				5					
V																					4				
W																						3			
X																							2		
Y																								1	
Z																									

TWP
ROCK COUNTY, WI

IF AVAILABLE
ROCK COUNTY COORDINATES PREFERRED

North _____ Elev. _____

East _____

Hor. Datum _____ Vert. Datum _____


LATITUDE _____ ELLIPS. HT. _____

LONGITUDE _____

ELLIPS. DATUM
NAD83(91) _____ COUNTY _____ LIST _____

GPS (X) _____ TRAVERSE (X) _____

BASED ON THE FOLLOWING CONTROL:

PLACE MONUMENT SYMBOL  AT PROPER LOCATION ON ABOVE INDEX

 CORNER MONUMENT

WITNESS MONUMENT

(a)

BEARINGS ARE BASED ON:

FIELD BOOK _____ PAGE # _____

SHEET 1 OF 3

SHOW A PLAN VIEW DRAWING DEPICTING THE CORNER MONUMENT AND SURROUNDING PHYSICAL FEATURES, INCLUDING THE EXCAVATION AREA AND DEPTH.

PLANNING & ZONING COMMITTEE ADOPTED THE ABOVE FORM ON 12/2/1982

CORNER CODE A-21(1)

BE511

(B) Describe any record evidence, monument evidence, occupational evidence, testimonial evidence or any other material evidence you considered, and whether the monument was found or placed.

- 1834 MARCH 16 HARRISON ORIGINAL GOVERNMENT NOTES.VAR 7-00E
INTERSECTED NORTH BOUNDARY 39.6 WEST OF POST. SET POST &
MOUND.
- 1836 MARCH ORSON LYON NORTH BETWEEN SECTIONS 1 & 2 (VAR 5-55E)
1320 ENTERED ROCK RIVER BOTTOM
2310 TO A BUR OAK TREE 10 INCHES DIAMETER CORNER TREE.
CORNER TO SECTIONS 1 & 2 ON A SOUTH OR LEFT BANK
OF RIVER.
2633.4 TO RIGHT BANK OF RIVER. NO POST TO BE FOUND
5735.40 INTERSECTED NORTH BOUNDARY AT POST
FIRST 1320 HILLY & 2ND RATE LAND RIVER BOTTOM
LEVEL & FIRST RATE TIMBER BUR BLACK & WHITE OAK
RIVER GROWTH OAK & ??
- 1860 RUGER VOL 1 PG 129 SHOWS THE FOLLOWING:
2623.83 TO N 1/4 CORNER OF SECTION 2
3008.28 TO E 1/4 CORNER OF SECTION 2
EAST 39.60 TO SE CORNER OF SECTION 35
ALSO SHOWS THAT THE N 1/4 CORNER OF SECTION 2 IS ON LINE
WITH THE NW AND NE CORNERS OF SECTION 2.
- 1934 BATTERMAN MAP #164 DUG AT NE COR SEC 2 & FOUND NOTHING. FD
GAS PIPE AND STONE AND REFERENCED SAME AT A POINT 142.51
WEST OF EXCAVATION. ESTABLISHED THE NE COR 142.51 FROM ABOVE
MENTIONED GAS PIPE BY PRORATING FROM THE NW COR SEC 2 AND
THE WOOD STAKE AT THE N 1/16TH CORNER OF THE NE 1/4 OF SEC
2.
- 1957 BATTERMAN JR. VOL 3 PG 527 SHIMEAL PLACED 1" PIPE.
- 1965 BATTERMAN JR. VOL 4 PG 170 FOUND PIPE. PLACED MONUMENT BOX
& REFERENCED SAME. SHOWS R/R SPIKE ABOUT 1.2 SOUTH OF PIPE.
- 1965 DOT VOL 6 PG 329 MONUMENT BOX. 1" PIPE DRIVEN IN BOX BY
BATTERMAN ENGINEERS. NOTE: ALL MEASUREMENTS FROM WITNESS
MONUMENTS TO LAND MARK WERE TAKEN TO ORIGINAL PTN, LOCATED
IN OLD PAVEMENT, PRIOR TO GRADING OPERATIONS ON OR ABOUT
APRIL 21, 1965.
- 1979 BARNES VOL 5 PG 576 FOUND MONUMENT BOX AS REFERENCED VOL 4
PG 170. SHOWS WEST OF SE CORNER OF SECTION 35 WITH
FOLLOWING DISTANCES:
ORIGINAL 39.6
RUGER 39.6
BATTERMAN 169.59
- 1980 BARNES VOL 6 PG 15. THE MONUMENT BOX NEAR THE NE CORNER OF
SECTION 2 IS NOT THE CORNER. A PROPERTY CORNER WAS
ERRONEOUSLY MONUMENTED AS THE SECTION CORNER.
- 1986 BARNES VOL 6 PG 335 SHOWS 2585.71 TO N 1/4 CORNER SECTION
1, AND SAME JOGS AS IN VOL 5 PG 576. ALSO SHOWS 2638.43
BETWEEN N 1/4 CORNER OF SECTION 1 AND NORTH EAST CORNER OF
SECTION 1.
- 1989 BARNES VOL 6 PG 397 SAME INFORMATION AS IN VOL 6 P 335.
- 1990 BARNES A21 FOUND A PIPE IN A MONUMENT BOX AND AN ALUMINUM
MONUMENT.

FOUND ALUM. MON.

C) Was the corner restored through acceptance of (1) an
obliterated evidence location, or, (2) a found perpetuated
location?

ACCEPTED THE ALUMINUM MONUMENT.

A-21 (1)

D) Describe any material discrepancy between the location of the corner as restored or reestablished and the location of that corner as previously restored or reestablished by distance and direction. Show the discrepancy on the plan view drawing under (a), above. Show the distances between the corner as previously restored or reestablished and (1) the corner as restored or reestablished, and (2) to at least 4 of the witness monuments shown on the drawing in (a), above.
THERE IS A DISCREPANCY. THE MAP SHOWS THE ERRONEOUS MONUMENT AS MONUMENTED BY THE MONUMENT BOX. THE CORRECT CORNER IS THE ALUMINUM MONUMENT.

I, Donald Barnes, hereby certify that the corner points as identified by the corner code index were, in a field survey on, August 20, 1990, established, re-established, monumented, re-monumented, recovered or restored as expressed below and in conformance with the regulations and rules as required in the current manual of survey instructions of the United States Department of Interior, Bureau of Land Management.

COUNTY SURVEYOR FILING DATA

seal

Date of computer entry_____

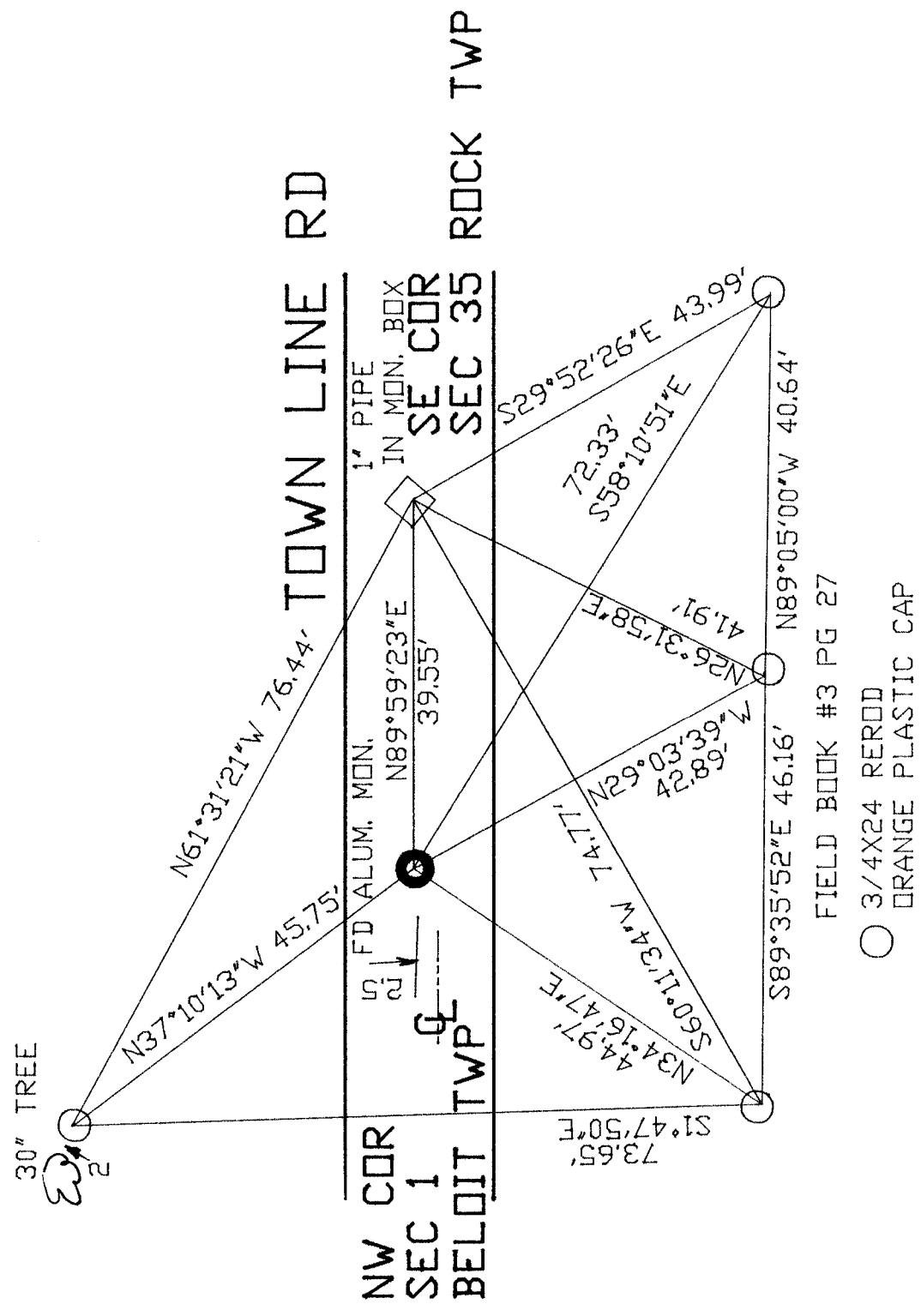
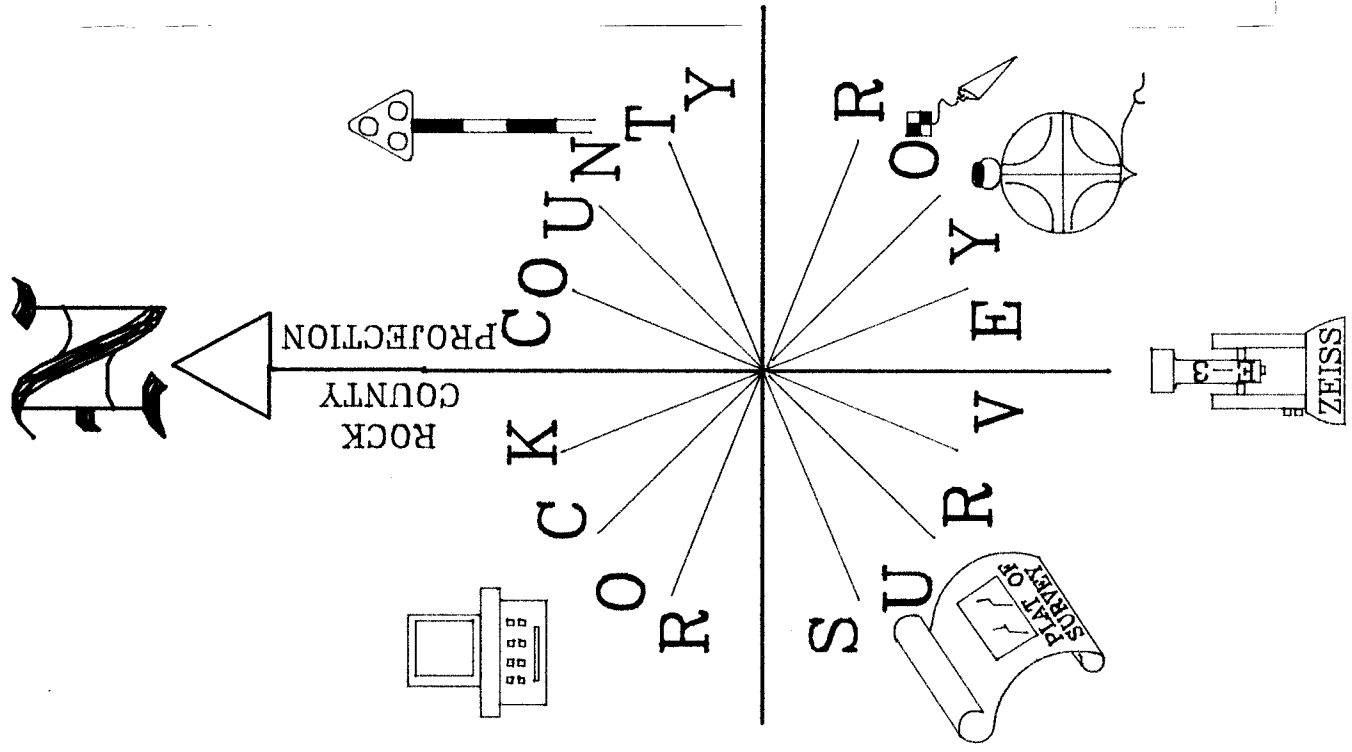
Date microfilmed _____

Number of included sheets _____
CORNER CODE

AFFIX YOUR LAND SURVEYOR SEAL

Donald Barnes
OCT 19, 1998

A-21 (7)



FIELD BOOK #3 PG 27
 ○ 3/4X24 REROD
 ○ ORANGE PLASTIC CAP

Donald Barnes
 OCT 19, 1998

A-21(1)