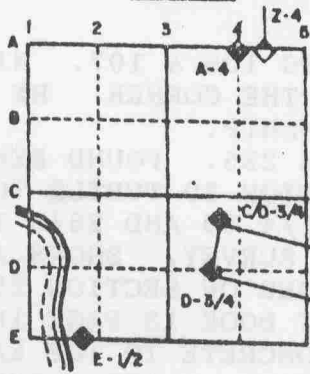


U.S. PUBLIC LAND SURVEY MONUMENT RECORD

For Public Land Survey Corners in the  
 T. 1 N., R. 12 E.  
 CORNER CODE INDEX

1	2	3	4	5	6	7	8	9	10	11	12	13	14	15	16	17	18	19	20	21	22	23	24	25	
A																									
B	6																								
C		5																							
D			4																						
E				3																					
F					2																				
G	7																								
H		8																							
I			9																						
J				10																					
K					11																				
L						12																			
M	18																								
N		17																							
O			16																						
P				15																					
Q					14																				
R						13																			
S							12																		
T	30																								
U		29																							
V			28																						
W				27																					
X					26																				
Y						25																			
Z							24																		

EXAMPLE



BELOIT TWP  
 ROCK COUNTY WI

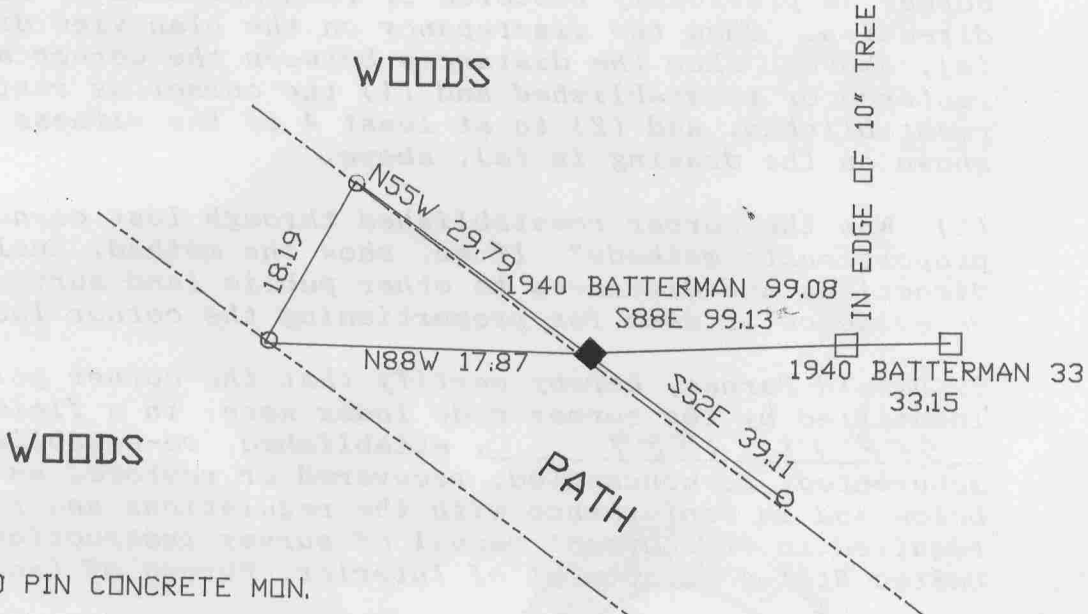
IF AVAILABLE  
 STATE PLANE COORDINATES

North (Y) 208,933.53 Eleve. (Z) \_\_\_\_\_  
 East (X) 496,260.92 Zone \_\_\_\_\_  
 Hor. Datum COUNTY Vert. Datum \_\_\_\_\_  
190,270.64  
2,266,437.94

PLACE MONUMENT SYMBOL (◆) AT PROPER H.N.B.T. LOCATION ON ABOVE INDEX

◆ CORNER MONUMENT      ○ WITNESS MONUMENT

BEARINGS ARE BASED ON: MAGNETIC



- FOUND PIN CONCRETE MON.
- ◆ REPLACED 1X24" IRON PIPE WITH ALUMINUM MON. WITH YELLOW CARSONITE POST 1' NORTH OF MONUMENT. MONUMENT IS .2' ABOVE GROUND
- 1/2X24" IRON RE-ROD

MICROFILMED

BOOK 2  
 PG 3

SHEET \_\_\_ OF \_\_\_

CORNER CODE: T 25

(B) Describe any record evidence, monument evidence, occupational evidence, testimonial evidence or any other material evidence you considered, and whether the monument was found or placed.

- 1859 HUBART VOL 1 PG 106 & 107. HIS MAP SHOWS BT BUT STATES NOTHING ABOUT THE CORNER. HE USED IT TO SUBDIVIDE SECTION 30 TURTLE TOWNSHIP.
- 1885 RUGER VOL 2 PG 295. FOUND REMAINS OF BTs. HE USED IT TO SUBDIVIDE SECTION 30 TURTLE TOWNSHIP. SHOWS A DISTANCE OF 5112.86 TO E 1/4 30 AND 2640 TO NW CORNER OF SECTION 30.
- 18?? RUGER PLAT OF SURVEY. SHOWS A DISTANCE OF 2635.93 TO THE SOUTHEAST CORNER OF SECTION 25.
- 1936 BATTERMAN PLAT BOOK 13 PAGE 1B. SHOWS PIPE AND 99.07 TO IRON ROD IN CONCRETE TO THE EAST.
- 1940 BATTERMAN PLAT OF SURVEY. SHOWS PIPE AT CORNER AND 99.08 TO IRON ROD IN CONCRETE TO THE EAST. HIS BEARINGS COMPUTES AN ANGLE AT THE EAST QUARTER CORNER OF SECTION 25 OF 179-59-30 FROM THE NORTHEAST TO THE SOUTHEAST CORNERS OF SECTION 25.
- 1944 BATTERMAN PLAT BOOK 13 PAGE 8. SHOWS PIPE AND 99.07 TO IRON ROD IN CONCRETE TO THE EAST.
- 1949 BATTERMAN SUBDIVISION PLAT BOOK 15 PAGE 19. SHOWS A BEARING FROM THE SUBDIVISION TO THE EAST QUARTER CORNER OF SECTION 25.
- 1950 BATTERMAN PLAT BOOK 15 PAGE 24 SHOWS A PIPE ON HIS MAP.
- 1974 BRIDWELL PLAT OF SURVEY. CALLS FOR A 1 1/2" PIPE AT THE EAST QUARTER CORNER OF SECTION 25.

FOUND 1x24" IRON PIPE. REPLACED IT WITH AN ALUMINUM MONUMENT. UNDER THE IRON PIPE, I FOUND 3 INCHES OF A WOOD STAKE. I PLACED A YELLOW CARSONITE POST 1' NORTH OF THE MONUMENT. MONUMENT IS ABOUT 0.2' ABOVE GROUND.

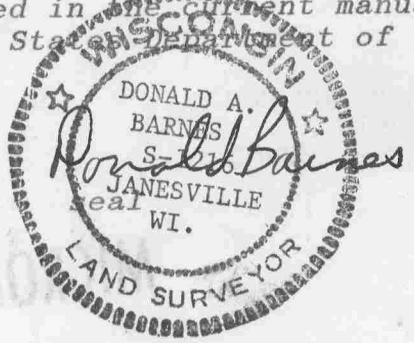
C) Was the corner restored through acceptance of (1) an obliterated evidence location, or, (2) a found perpetuated location?

ACCEPTED FOUND PERPETUATED LOCATION.

D) Describe any material discrepancy between the location of the corner as restored or reestablished and the location of that corner as previously restored or reestablished by distance and direction. Show the discrepancy on the plan view drawing under (a), above. Show the distances between the corner as previously restored or reestablished and (1) the corner as restored or reestablished, and (2) to at least 4 of the witness monuments shown on the drawing in (a), above.

(E) Was the corner reestablished through lost corner proportionate methods? If so, show the method, including the directions and distances to other public land survey corners used as evidence or used for proportioning the corner location.

I, Donald Barnes, hereby certify that the corner points as identified by the corner code index were, in a field survey on, SEP 13 1989, established, re-established, monumented, re-monumented, recovered or restored as expressed below and in conformance with the regulations and rules as required in the current manual of survey instructions of the United States Department of Interior, Bureau of Land Management.



COUNTY SURVEYOR FILING DATA

Date of computer entry \_\_\_\_\_

Date microfilmed \_\_\_\_\_

Number of included sheets 125  
CORNER CODE

AFFIX YOUR LAND SURVEYOR SEAL