

U.S. PUBLIC LAND SURVEY MONUMENT RECORD

For Public Land Survey Corners in:

WI ADMINISTRATIVE CODE A-E 7.08 REQUIREMENT

T. 1N., R. 12E

CORNER CODE INDEX

A	2	3	4	5	6	7	8	9	10	11	12	13	14	15	16	17	18	19	20	21	22	23	24	25
B																								
C	6																							
D		5																						
E																								
F																								
G	1																							
H		8																						
I																								
J																								
K																								
L	18																							
M		17																						
N																								
O																								
P	19																							
Q		20																						
R																								
S																								
T	30																							
U		29																						
V																								
W																								
X	31																							
Y		32																						
Z																								

BELOIT TWP

ROCK COUNTY WI

IF AVAILABLE
ROCK COUNTY COORDINATES PREFERRED

North 211,572.95 Elev. _____

East 496,277.16

Hor. Datum Country Vert. Datum _____

LATITUDE _____ ELLIPS. HT. _____

LONGITUDE _____

GPS (X) _____ TRAVERSE (X) _____

BASED ON THE FOLLOWING CONTROL:

PLACE MONUMENT SYMBOL AT PROPER LOCATION ON ABOVE INDEX

CORNER MONUMENT

WITNESS MONUMENT

BEARINGS ARE BASED ON: _____

FIELD BOOK _____ PAGE # _____

SHEET 1 OF 2

SHOW A PLAN VIEW DRAWING DEPICTING THE CORNER MONUMENT AND SURROUNDING PHYSICAL FEATURES, INCLUDING THE EXCAVATION AREA AND DEPTH.

PLANNING & ZONING COMMITTEE ADOPTED THE ABOVE FORM ON 12/2/1982

CORNER CODE R25

BE593

(B) Describe any record evidence, monument evidence, occupational evidence, testimonial evidence or any other material evidence you considered, and whether the monument was found or placed.

- 1859 HOBART VOL 1 PG 105 STONE V0-29E 2647.92 TO W 1/4 COR SEC 19, 2412.96 N89-47E TO S 1/4 COR SEC 19. COURSES ACCORDING TO THE TRUE MERIDIAN.
- 1887 RUGER VOL 2 PG 414 RUGER SET LS IRREGULAR POINTED 30X8X8 POINTUP. 135.30' WEST OF CENTERLINE OF SHOPIER & BELOIT RD.
- 1885 RUGER VOL 2 PG 295 FOUND OLD STAKE IN ROAD SET IN PLACE OF OLD STAKE LIMESTONE 18X8X5. 2640.08 TO W 1/4 COR SEC 30 & 2414.78 TO N 1/4 COR SEC 30.
- 1886 RUGER VOL 2 PG 280 SOUTHERLY 1394.00 TO LS 16X7X6 AT BEND IN JANESVILLE & BELOIT RD. 2257.45 TO W 1/4 COR SEC 30.
- 1911 KERCH VOL 3 PG 69 2643.5 TO W 1/4 COR SEC 19. FOUND STONE SET BY HOBART. ANGLE 44-45-45 FROM W 1/4 COR SEC 19 TO CENTER LINE OF JANESVILLE/BELOIT ROAD. ANGLE OF 89-20-10 FROM W 1/4 COR TO SOUTH 1/4 CORNER OF SEC 19.
- 19?? SUNNY VOL 3 PG 297 FOUND STONE MONUMENT IN CAST IRON MONUMENT BOX. 8" LOW SET 1 1/2X8 IRON PIPE MONUMENT CAPPED ON TOP REFERENCED SAME.
- 1960 BATTERMAN VOL 4 PG 55 STATES NOTHING ABOUT CORNER. REFERENCED SAME.

FOUND ROUND 8" MONUMENT BOX & 20" DEEP FOUND STONE. PLACED ALUMIMUM EXTENSION WITH CAP ON TOP OF STONE.

C) Was the corner restored through acceptance of (1) an obliterated evidence location, or, (2) a found perpetuated location?
ACCEPTED FOUND PERPETUATED LOCATION

D) Describe any material discrepancy between the location of the corner as restored or reestablished and the location of that corner as previously restored or reestablished by distance and direction. Show the discrepancy on the plan view drawing under (a), above. Show the distances between the corner as previously restored or reestablished and (1) the corner as restored or reestablished, and (2) to at least 4 of the witness monuments shown on the drawing in (a), above.

(E) Was the corner reestablished through lost corner proportionate methods? If so, show the method, including the directions and distances to other public land survey corners used as evidence or used for proportioning the corner location.

NO

I, Donald Barnes, hereby certify that the corner points as identified by the corner code index were, in a field survey on, 1992, established, re-established, monumented, re-monumented, recovered or restored as expressed below and in conformance with the regulations and rules as required in the current manual of survey instructions of the United States Department of Interior, Bureau of Land Management.

Donald Barnes
June 26, 1997

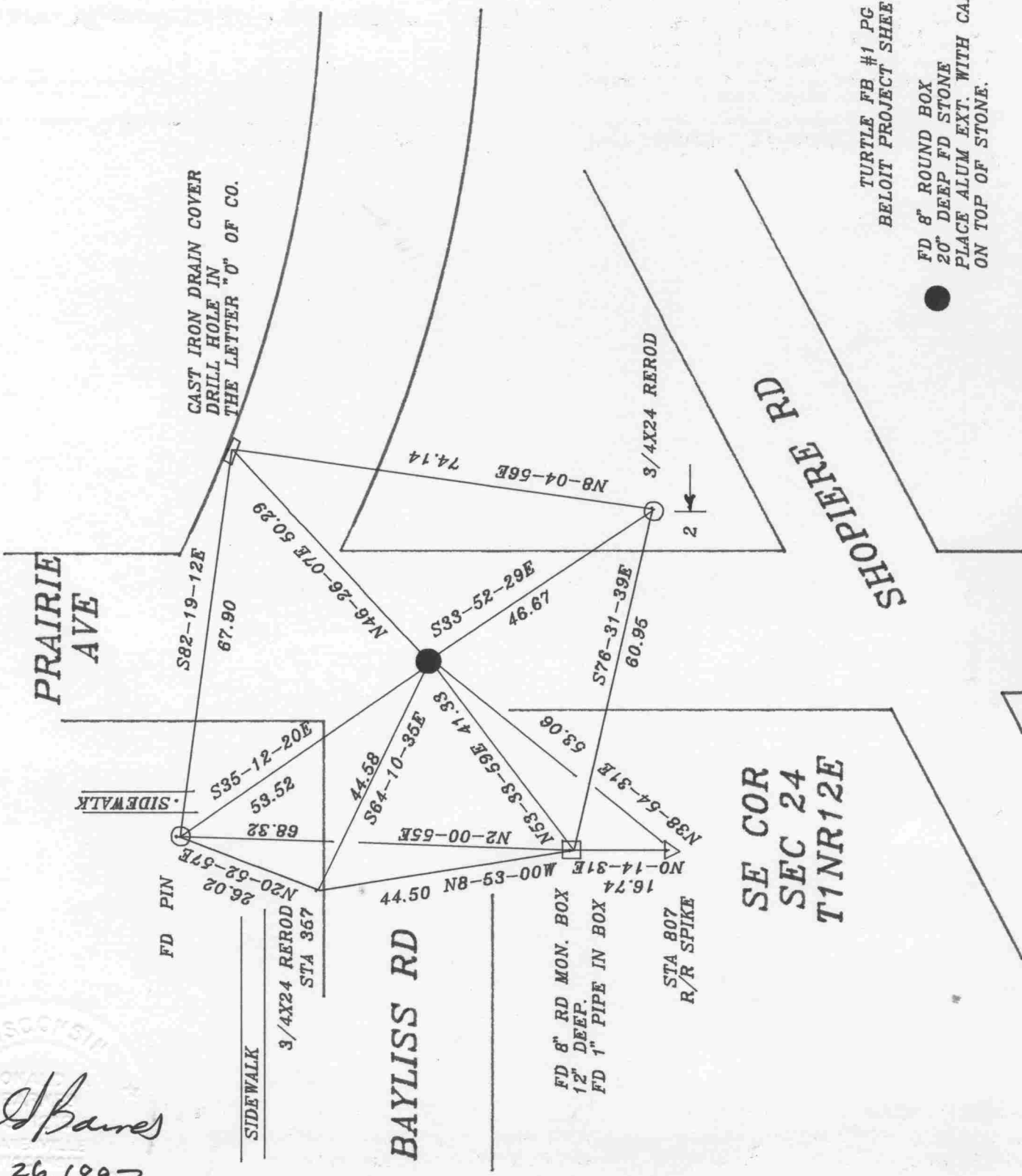
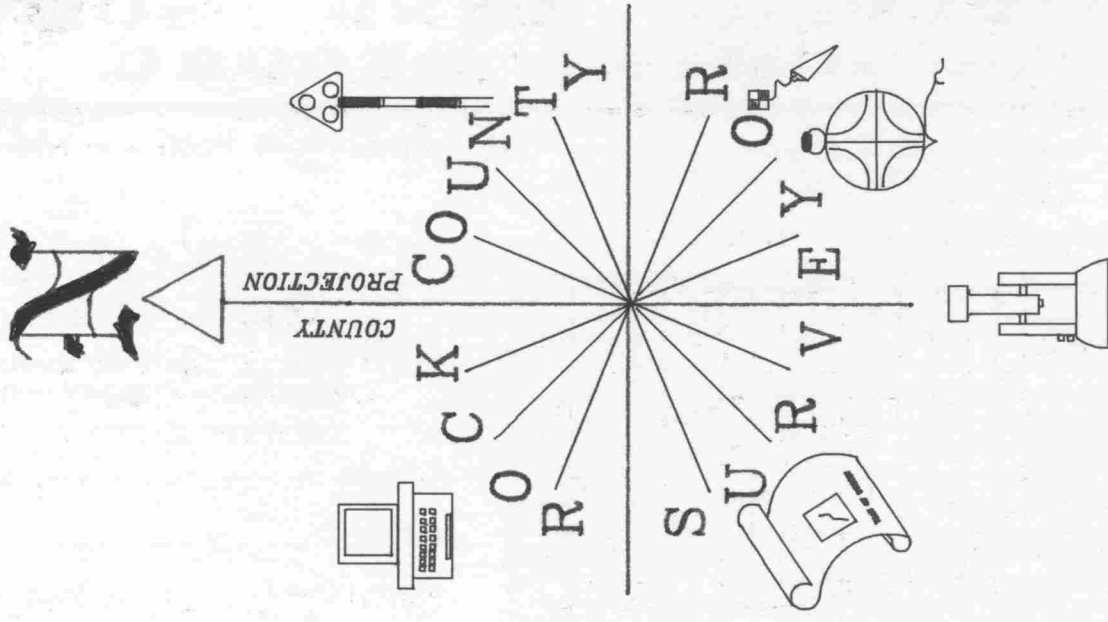
COUNTY SURVEYOR FILING DATA

Date of computer entry _____

Date microfilmed _____

Number of included sheets 1
CORNER CODE

R25



TURTLE FB #1 PG 67
BELOIT PROJECT SHEET #357

●
FD 8" ROUND BOX
20" DEEP FD STONE
PLACE ALUM EXT. WITH CAP
ON TOP OF STONE.

Donald Barnes
June 26, 1997

R25