

U.S. PUBLIC LAND SURVEY MONUMENT RECORD

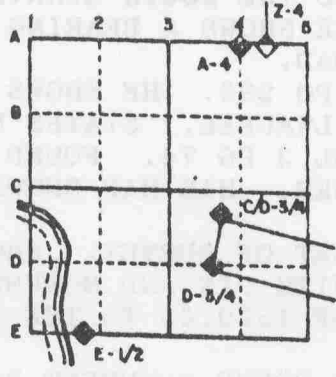
For Public Land Survey Corners in the
T. 1 N., R. 12 E.

CORNER CODE INDEX

	1	2	3	4	5	6	7	8	9	10	11	12	13	14	15	16	17	18	19	20	21	22	23	24	25
A																									
B																									
C	6																								
D		5																							
E			4																						
F				3																					
G					2																				
H																									
I																									
J																									
K																									
L																									
M																									
N																									
O																									
P																									
Q																									
R																									
S																									
T																									
U																									
V																									
W																									
X																									
Y																									
Z																									

PLACE MONUMENT SYMBOL (◆) AT PROPER LOCATION ON ABOVE INDEX

EXAMPLE



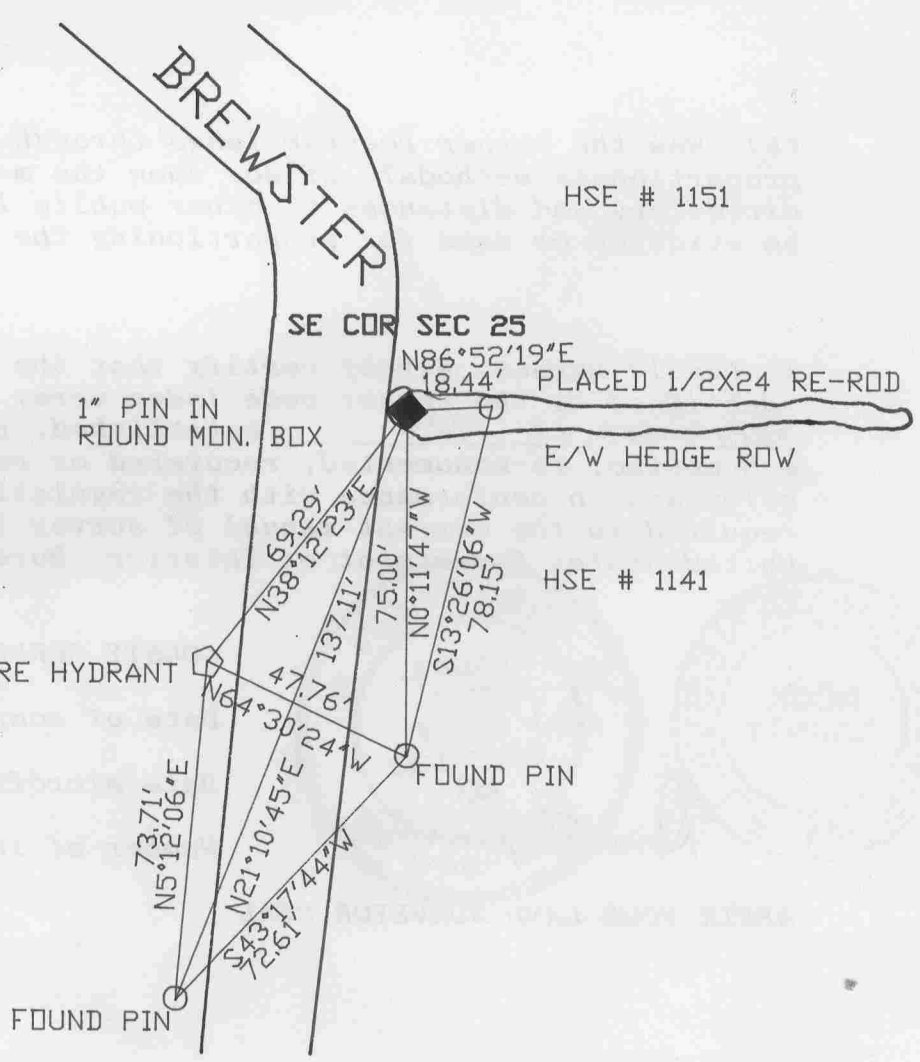
BELOIT TWP
ROCK COUNTY WI

IF AVAILABLE
STATE PLANE COORDINATES

North (Y) 187,636.00 Eleve. (Z) _____
 East (X) 2,266,451.00 Zone _____
 Hor. Datum _____ Vert. Datum _____
206,298.25
496,245.00 COUNTY

◆ CORNER MONUMENT ○ WITNESS MONUMENT

BEARINGS ARE BASED ON: STATE PLANE



MICROFILMED

SHEET 1 OF 1

CORNER CODE: V 25

1859 HOBART VOL 1 PG 107. STATES NOTHING ABOUT CORNER. SHOWS A DISTANCE OF 343.53 TO THE CENTER OF MILWAUKEE AND A BEARING OF S89-58E TO THE SOUTH QUARTER CORNER OF SECTION 30 TURTLE TOWNSHIP. HE SHOWS A BEARING OF N51-33E FOR THE CENTER OF MILWAUKEE ROAD.

1885 RUGER VOL 2 PG 295. HE SHOWS A DISTANCE OF 344.39 TO THE CENTER OF MILWAUKEE. STATES NOTHING ABOUT THE CORNER.

1919 BATTERMAN VOL 3 PG 74. FOUND LIMESTONE WITH DRILL HOLE AT SECTION CORNER. HIS MAP SHOWS IT ON THE EAST SIDE OF THE ROAD.

1957 SHIMEAL. PLAT OF SURVEY. SHOWS A STONE AT THE NW CORNER OF SECTION 31 WITH PIN AND MONUMENT BOX ON TOP. HE ALSO SHOWS A DISTANCE OF 1320.65 TO THE 1/16th CORNER TO THE SOUTH.

FOUND A 1" PIN IN ROUND MONUMENT BOX IN HEDGE ROW BETWEEN HOUSES #1151 AND #1141. CORNER IS 24.8' EAST OF THE CENTER OF THE PAVEMENT.

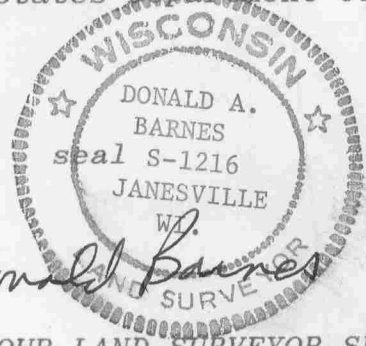
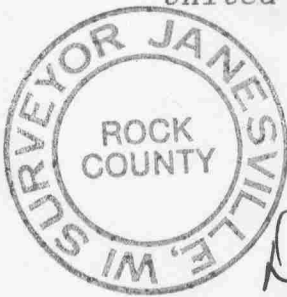
C) Was the corner restored through acceptance of (1) an obliterated evidence location, or, (2) a found perpetuated location?

ACCEPTED FOUND PERPETUATED LOCATION.

D) Describe any material discrepancy between the location of the corner as restored or reestablished and the location of that corner as previously restored or reestablished by distance and direction. Show the discrepancy on the plan view drawing under (a), above. Show the distances between the corner as previously restored or reestablished and (1) the corner as restored or reestablished, and (2) to at least 4 of the witness monuments shown on the drawing in (a), above.

(E) Was the corner reestablished through lost corner proportionate methods? If so, show the method, including the directions and distances to other public land survey corners used as evidence or used for proportioning the corner location.

I, Donald Barnes, hereby certify that the corner points as identified by the corner code index were, in a field survey on, SEPTEMBER 13 1989, established, re-established, monumented, re-monumented, recovered or restored as expressed below and in conformance with the regulations and rules as required in the current manual of survey instructions of the United States Department of Interior, Bureau of Land Management.



Donald Barnes

COUNTY SURVEYOR FILING DATA

Date of computer entry _____

Date microfilmed _____

Number of included sheets 0
CORNER CODE

AFFIX YOUR LAND SURVEYOR SEAL

MICROFILMED

V 25