

Paper weight-110# (minimum)

Black nonfading ink required

U.S. PUBLIC LAND SURVEY MONUMENT RECORD

For Public Land Survey Corners In:

WI ADMINISTRATIVE CODE A-E 7.08 REQUIREMENT

T. 2 N. R. 10 E. 4th P.M.

REV 10/23/2004

USMONREC.DWG

CORNER CODE INDEX

SPRING Valley TWP
ROCK COUNTY WI

| | | | | | | | | | | | | | | | | | | | | | | | | | | |
|---|---|---|---|---|---|---|---|---|---|----|----|----|----|----|----|----|----|----|----|----|----|----|----|----|----|---|
| A | 1 | 2 | 3 | 4 | 5 | 6 | 7 | 8 | 9 | 10 | 11 | 12 | 13 | 14 | 15 | 16 | 17 | 18 | 19 | 20 | 21 | 22 | 23 | 24 | 25 | A |
| B | | 6 | | | | | 5 | | | | | 4 | | | 3 | | | 2 | | | | 1 | | | | B |
| C | | | | | | | | | | | | | | | | | | | | | | | | | | C |
| D | | | | | | | | | | | | | | | | | | | | | | | | | | D |
| E | | | | | | | | | | | | | | | | | | | | | | | | | | E |
| F | | | | | | | | | | | | | | | | | | | | | | | | | | F |
| G | | | | | | | | | | | | | | | | | | | | | | | | | | G |
| H | | | | | | | | | | | | | | | | | | | | | | | | | | H |
| J | | | | | | | | | | | | | | | | | | | | | | | | | | J |
| K | | | | | | | | | | | | | | | | | | | | | | | | | | K |
| L | | | | | | | | | | | | | | | | | | | | | | | | | | L |
| M | | | | | | | | | | | | | | | | | | | | | | | | | | M |
| N | | | | | | | | | | | | | | | | | | | | | | | | | | N |
| O | | | | | | | | | | | | | | | | | | | | | | | | | | O |
| P | | | | | | | | | | | | | | | | | | | | | | | | | | P |
| Q | | | | | | | | | | | | | | | | | | | | | | | | | | Q |
| R | | | | | | | | | | | | | | | | | | | | | | | | | | R |
| S | | | | | | | | | | | | | | | | | | | | | | | | | | S |
| T | | | | | | | | | | | | | | | | | | | | | | | | | | T |
| U | | | | | | | | | | | | | | | | | | | | | | | | | | U |
| V | | | | | | | | | | | | | | | | | | | | | | | | | | V |
| W | | | | | | | | | | | | | | | | | | | | | | | | | | W |
| X | | | | | | | | | | | | | | | | | | | | | | | | | | X |
| Y | | | | | | | | | | | | | | | | | | | | | | | | | | Y |
| Z | | | | | | | | | | | | | | | | | | | | | | | | | | Z |

IF AVAILABLE
ROCK COUNTY COORDINATES PREFERRED

North _____ Elev. _____

East _____

Hor. Datum _____ Vert. Datum _____

LATITUDE _____ ELLIPS. HT. _____

LONGITUDE _____

NAD83(91) _____ NETWORK ADJ. YR 2010

GPS (X) _____ TRAVERSE (X) X

BASED ON THE FOLLOWING CONTROL:

PLACE MONUMENT SYMBOL AT PROPER LOCATION ON ABOVE INDEX

CORNER MONUMENT

WITNESS MONUMENT

BEARINGS ARE BASED ON: ROCK COUNTY PROJECTION

FIELD BOOK _____ PAGE # _____
OR OBSERVATION SHEET _____

SHEET 1 OF 3

SHOW A PLAN VIEW DRAWING DEPICTING THE CORNER MONUMENT AND SURROUNDING PHYSICAL FEATURES, INCLUDING THE EXCAVATION AREA AND DEPTH.

PLANNING & ZONING COMMITTEE ADOPTED THIS FORM ON 12/2/1982

CORNER CODE A-11(1)

SP506 N 1/4 COR SEC 4

(B) Describe any record evidence, monument evidence, occupational evidence, testimonial evidence or any other material evidence you considered, and whether the monument was found or placed.

- 1833 MULLETT SOUTH BOUNDARY T3N R10E WEST ON SOUTH SIDE SEC 33
 - 528 ENTER MARSH
 - 1650 LEAVE MARSH
 - 2640 SET QUARTER SECTION POST BUR OAK 14 N49W 27.0'; BUR OAK 4 N72E 56.0'
 - 5280 SET POST CORNER SECTIONS 32 & 33; BUR OAK 14 N87W 22'; BUR OAK 15 N47W 17' LAND ROLLING SECOND RATE BUR OAK, RED ROOT, HAZEL ROSE WILLOW & C
- 1867 LOCKE VOL 1 PG 288 & #04455 @ S 1/4 COR SEC 33 FD STUMPS OF BTS & OLD STAKE. SET STAKE SURROUNDED BY FLAT LIMESTONES. 40.92 WEST OF STAKE ESTABLISHED 1/4 COR FOR SUBDIVIDING SEC 4. DID NOT PLACE A MON. 2622.00 TO NW COR SEC 4.
- 1874 RUGER VOL 2 PG 133 @ S 1/4 COR SEC 33 FD STAKE SURROUNDED BY 4 LIMESTONES. ALSO FD STUMPS OF BTS. SHOWS THE FOLLOWING:
 - VAR6-48 2618.55 S 1/4 COR SEC 33 TO SW COR SEC 33
 - VAR6-35 2623.52 S 1/4 COR SEC 33 TO SE COR SEC 33
 - 2654.50 TO DROVE STAKE SURROUNDED 3 HH STONES COR @ CENTER OF SEC 33. CENTER IS 1.32' WEST OF BOUNDARY POPLAR TREE. VAR 7-23 1327.26 FROM S 1/4 COR SEC 33 TO STAKE SURROUNDED BY 3 HH STONES @ W1/16TH COR OF SE 1/4 SEC 33.
- 1965 BATTERMAN VOL 4 PG 214 DUG & FD NOTHING @ NW, N 1/4, & N 1/16TH COR OF NE 1/4 OF SEC 4. ALSO DUG & FD NOTHING @ SW COR SEC 33.
- 1973 LEE GSM VOL 3 PG 212. N88-15-58W 150.69 FROM S 1/4 COR SEC 33 THENCE N0-36-24E 33.00 TO GSM LOT PIPE. FROM S 1/4 COR SEC 33 S88-03-18E 524.55; THENCE N1-03-54W 33 TO GSM LOT PIPE.
- 1973 LEE VOL 5 PG 3 & 4. SHOWS TIES FOR THE S 1/4 COR SEC 33 BUT STATES NOTHING ABOUT THE CORNER. SHOWS 2610.26 TO SW AND 2610.26 TO SE COR SEC 33 WITH AN EXTERIOR ANGLE OF 179-47-20 @ S 1/4 COR SEC 33. 2660.56 TO CENTER OF SEC 33 & 5316.38 TO N 1/4 COR SEC 33. ANGLE 88-52-22 @ S 1/4 COR SEC 33 FROM SW TO N 1/4 COR SEC 33. SET THE SE COR OF SW 1/4 OF SW 1/4 SEC 33 & REFERENCED SAME. THE 1/16TH CORNER IS SOUTH OF SOUTH PVMT EDGE.
- 1988 BARNES VOL 6 PG 393 SHOWS THE ABOVE RECORD DISTANCES
- 1990 BARNES A-11 & Z-11 FD ALUMINUM MONUMENT & TIES. ACCEPTED THE ALUMINUM MONUMENT AS THE N 1/4 COR OF SEC 4 AND NOT AS THE S 1/4 COR SEC 33. THIS IS IN HARMONY WITH THE RECORD DISTANCES AND THE STONES THAT I FOUND AT THE SE COR OF SEC 33.
- 1990 BARNES VOL 6 PG 410 SHOWS RECORD DISTANCES. S89-46-25E 2571.69 TO NE COR SEC 4 & N89-55-24W 2623.54 TO NW COR SEC 4. FROM S 1/4 COR SEC 33 N1-12-39W 2661.81 TO INT OF SEC 33 1/4 LINES.
- 1992 COMBS VOL 16 PG 140 FD ALUM @ N 1/4 COR SEC 4 & PK @ S 1/4 COR SEC 33. FROM ALUM @ N 1/4 COR SEC 3 TO LEE'S ALUM NEAR NE COR SEC 4 IS 2546.90 (BARNES 2546.81). PK @ S 1/4 COR SEC 33 IS EAST 32.33 OF THE ALUM @ THE N 1/4 COR SEC 4. ANGLE 179-48-30 (LEE-179-47-20 & MINE IS 179-48-02) @ PK @ S 1/4 COR SEC 33 FROM LEE'S ALUM NEAR NE COR SEC 4 TO ALUM @ NW COR

SEAL

Emboss

David Barnes
Jan 13, 2011

SHEET 1 OF 3

CORNER CODE A-11(1)

SP506 N 1/4 COR SEC 4

SEC 4. [FROM THE ALUM TO THE PK/FLASHER, WHICH IS A TRAVERSE STATION IT IS S89-04-59E 32.28. SINCE COMBS IS 32.33 IT APPEARS HE USED THE TRAVERSE STATION AS THE S 1/4 COR SEC 33.]

2004 COMBS #14902 SIZE 2 SEC 33 USED MONUMENTS AS CALLED FOR IN 1990 Z-11 TO SUBDIVIDE NORTH HALF OF SEC 33.

AFTER RECONSIDERATION I BELIEVE MY 1990 CALL FOR THE FD ALUM MON AS THE N 1/4 COR OF SEC 4 IS NOT CORRECT. IT IS THE S 1/4 COR SEC 33 AS LEE INTENDED. I BASE THIS ON THE FOLLOWING:

- 1) LEE'S DISTANCE BETWEEN THE FD ALUM MON @ THE S 1/4 COR SEC 33 & THE POLY (REPLACED PIPE) @ THE SW COR SEC 33 IS DIFFERENT FROM MINE BY ONLY 0.13'.
- 2) THE DIFFERENCE IN LEE'S ANGLE (88-52-22) AND MY ANGLE (88-52-07) @ THE ALUM MON @ THE S 1/4 COR SEC 33 FROM THE SW COR TO N 1/4 COR SEC 33 IS 0-00-15.
- 3) THE DIFFERENCE IN LEE'S DISTANCE (2660.56) FROM THE S 1/4 COR SEC 33 TO THE INT OF THE 1/4 LINES AND MY DISTANCE (2660.57) IS 0.01'.
- 4) COMBS' 1992 DISTANCE FROM THE ALUM MON. @ THE S 1/4 COR SEC 33 TO LEE'S ALUM NEAR THE NE COR SEC 4 IS 2546.90' (MY DISTANCE IS 2546.81 & LEE'S DISTANCE IS 2541.62). THERE APPEARS TO BE A BLUNDER IN LEE'S DISTANCE TO HIS ALUM. MON. NEAR THE NE COR SEC 4.

I AM NOW USING LEE'S ALUM MON AS THE S 1/4 COR SEC 33 TO REESTABLISH THE N 1/4 COR OF SEC 4. THE N 1/4 COR SEC 4 IS N89-54-58W 25.98 FROM THE ALUM. I ESTABLISHED THE N 1/4 MIDWAY BETWEEN THE POLY MON @ THE NW COR SEC 4 & THE FD STONE @ THE NE COR SEC 4 ON LINE WITH THE ALUM @ S 1/4 COR SEC 33 & THE POLY MON @ THE SW COR SEC 33. THE DISTANCE TO THE NW & NE CORNERS OF SEC 4 IS 2597.64.

C) Was the corner restored through acceptance of (1) an obliterated evidence location, or, (2) a found perpetuated location?

I ACCEPTED LEE'S MONUMENT AS THE S 1/4 COR SEC 33.

D) Describe any material discrepancy between the location of the corner as restored or reestablished and the location of that corner as previously restored or reestablished by distance and direction. Show the discrepancy on the plan view drawing under (a), above. Show the distances between the corner as previously restored or reestablished and (1) the corner as restored or reestablished, and (2) to at least 4 of the witness monuments shown on the drawing in (a), above.

SEE DRAWING

(E) Was the corner reestablished through lost corner proportionate methods? If so, show the method, including the directions and distances to other public land survey corners used as evidence or used for proportioning the corner location.

I, **Donald Barnes**, hereby certify that the corner location as identified by the corner code index was determined by me under my direction and control and that this U.S. Public Land Survey Monument Record is correct and complete to the best of my knowledge and belief.

SEAL

SHEET 2 OF 3

Embassy
Donald
Barnes

CORNER CODE A-11(1)

A.E. 7.08 REQUIREMENT

Jan 13 2011

General Barnes
Jan 13 2011

1990 BARNES A-11
1973 LEE VOL 5 PG 4
USED 1990 FIELD DATA
FROM FB #3 PG 35

SW COR - S 1/4 COR
S89-55-22E 2610.39
S89-55-16E 2625.32
1973 LEE 2610.26
1867 LOCKE 2651.88
1874 RUGER VAR 6-48 2618.55

1990 BARNES
1973 LEE 2610.26
1867 LOCKE 2651.88
1874 RUGER VAR 6-48 2618.55

1/4 INT 1/4 LINES
1874 RUGER 2654.98
1973 LEE 2660.96
2660.97

S 1/4 - N 1/4 COR
1874 RUGER 5319.64
1973 LEE 5316.38
5319.04

MAGNOLIA TWP SW - ALUM NEAR SE SEC 33
T3N R10E
2010 5225.72
1973 LEE 5220.52
1833 DRIG 5280.0

NO MON.
ERRONEOUS COR
ALUM MON.
FD ALUM.

NW - NE COR SEC 4
2010 5195.28
1990 BARNES 5195.23
1874 RUGER 5184.96
1973 LEE 5165.08

N 1/4 - S 1/4 COR
N89-54-58W 25.98
1992 COMBS 32.33
1990 BARNES 15.01
1867 LOCKE 40.92

FD ALUM NEAR NE SEC 4
S89-43-44E 2572.79
1973 LEE 179-47-20
179-48-33
179-50-54

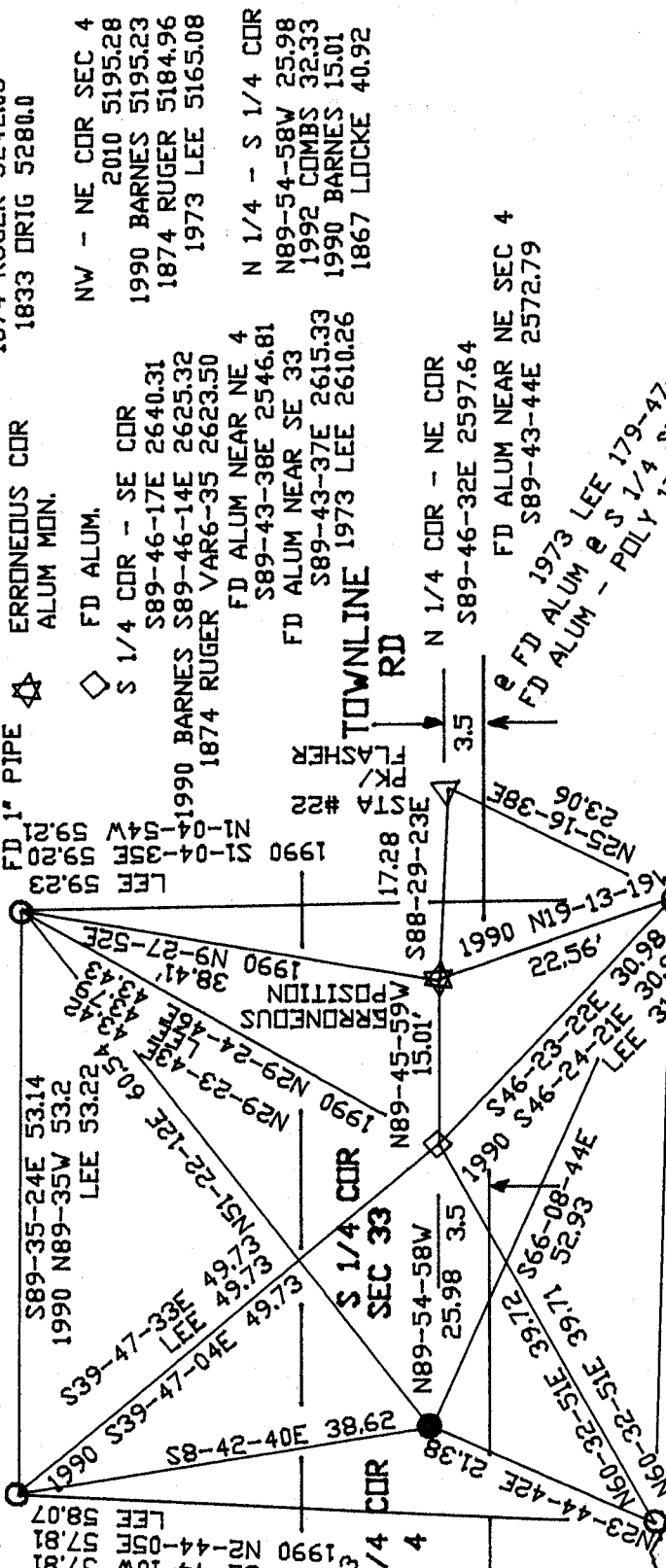
FD 1" PIPE
SPRING VALLEY
T2N R10E

LEE 57.06
1990 N88-9-17W 57.05
S88-09-17E 57.05

WITH ORANGE PLASTIC CAP FIELD BOOK #3 PG 35

A-11(1)

SHEET 3 OF 3



SW - SE COR SEC 33
2010 5250.70
1990 BARNES 5250.64
1973 LEE 5220.52
1874 RUGER 5242.05
1833 DRIG 5280.0

NO MON.
ERRONEOUS COR
ALUM MON.
FD ALUM.

NW - NE COR SEC 4
2010 5195.28
1990 BARNES 5195.23
1874 RUGER 5184.96
1973 LEE 5165.08

N 1/4 - S 1/4 COR
N89-54-58W 25.98
1992 COMBS 32.33
1990 BARNES 15.01
1867 LOCKE 40.92

FD ALUM NEAR NE SEC 4
S89-43-44E 2572.79
1973 LEE 179-47-20
179-48-33
179-50-54

FD 1" PIPE
SPRING VALLEY
T2N R10E

LEE 57.06
1990 N88-9-17W 57.05
S88-09-17E 57.05

A-11(1)

SHEET 3 OF 3