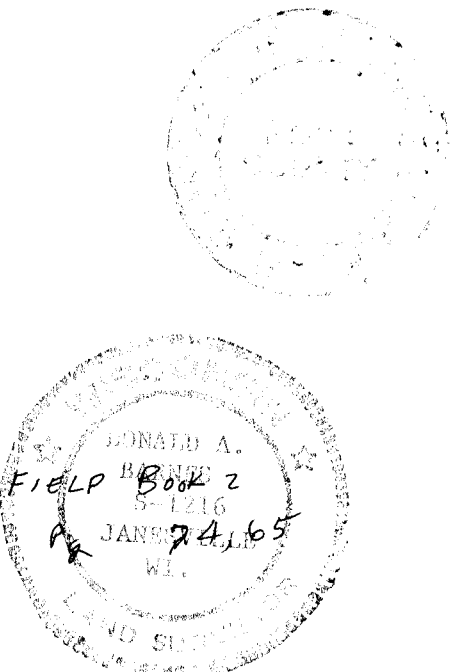
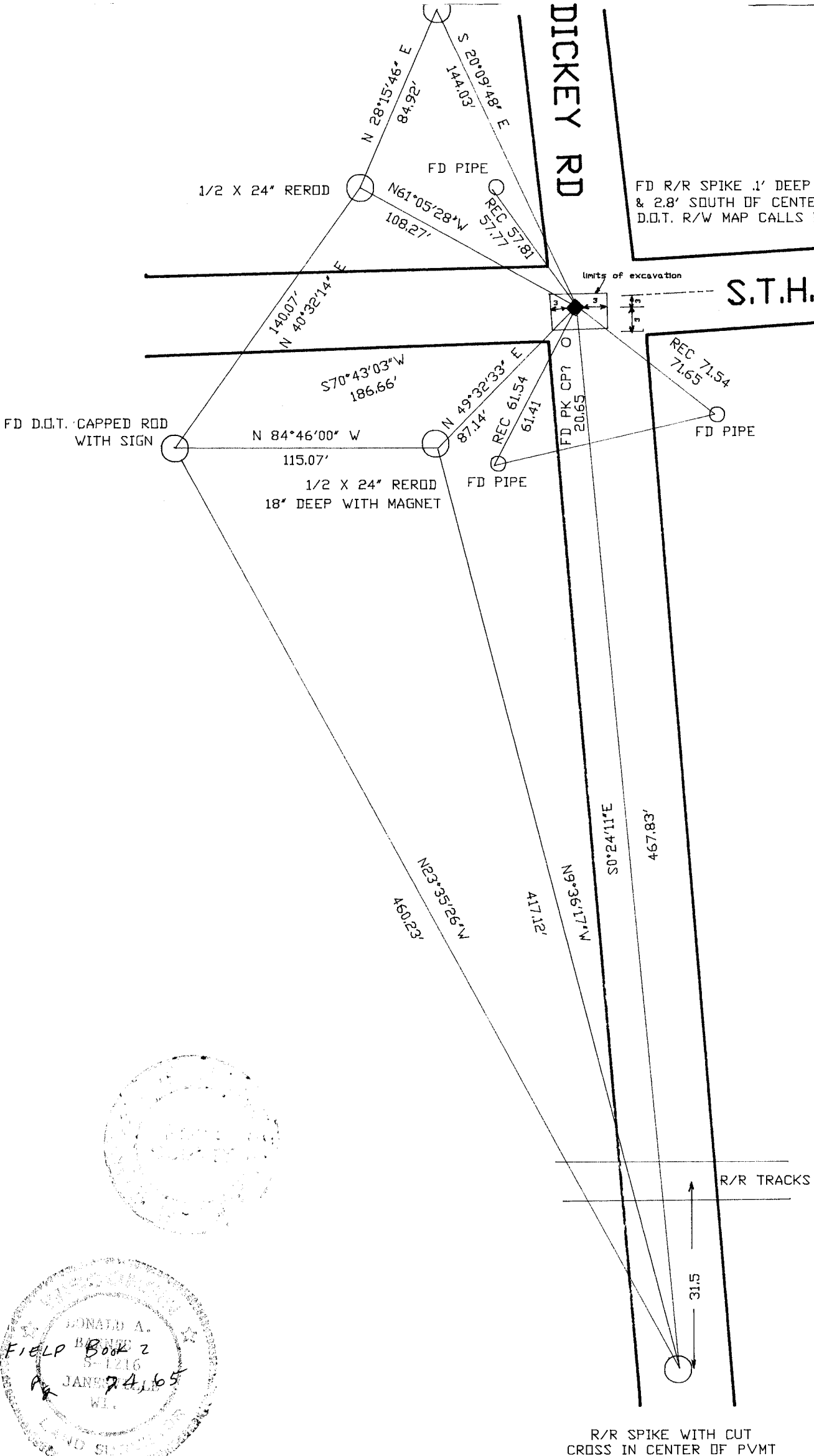


1/2 X 24" REROD
36" DI

DICKEY RD

FD R/R SPIKE .1' DEEP
& 2.8' SOUTH OF CENTERLINE PVMT
D.O.T. R/W MAP CALLS FOR 1" PIPE

S.T.H. 11



N 11 (1)

(B) Describe any record evidence, monument evidence, occupational evidence, testimonial evidence or any other material evidence you considered, and whether the monument was found or placed.

- 1855 BROWN VOL 1 PG 73 STATES NOTHING ABOUT CORNER BUT USED IT TO SUBDIVIDE SECTION 16
- 1866 LOCKE VOL 1 PG 252 FOUND STUMPS OF S.B.T & WHERE N.B.T. WAS DUG OUT & SET STAKE & SURROUNDED IT BY 4 HARDHEADS. SHOWS A DISTANCE OF 2636.04 TO THE CENTER OF SEC 16.
- 1907 KERCH VOL 3 PG 41 FOUND OLD STAKE SURROUNDED BY 3 HHs DROVE 1 1/4" IRON ROD 15" LONG & SURROUNDED BY 4 HHs. SHOWS A DISTANCE OF 2740.0 TO THE SE CORNER OF SECTION 16
- 1934 SUNNY VOL 3 PG 255 SET 1"X30" PIPE 3' SOUTH OF CENTER OF CONC. PAVEMENT. 16" OAK N33 1/2W 59' & 16" OAK N551/2E 57.8. SHOWS A DISTANCE OF 2740 TO SE COR SEC 16, 2654.9 TO SW COR OF SEC 16, 2649.2 TO FENCE AT CENTER OF SEC 21, AND 2640 TO CENTER OF SEC 16. CENTER OF SEC 16 IS AT EQUAL DISTANCE BETWEEN E & W 1/4 CORNERS.
- 1960 BATTERMAN VOL 4 PG 45 FOUND PIPE AT CORNER. PIPE IS 3' SOUTH OF CENTER OF PVMT. REFERENCED SAME
- 1961 VOL 4 PG 45 RESET 1" PIPE IN BLACKTOP
- 1978 BARNES VOL 5 PG 490 SHOWS 1370 TO FENCE TO THE EAST. AND 5282.37 TO NORTH QUARTER CORNER, 1320 TO FENCE TO NORTH
- 1978 SCHROEDER 2640.00 TO SE CORNER 2627.80 TO CENTER OF SECTION
- 1982 BARNES VOL 6 PG 286 SHOWS RECORD DISTANCES TO CORNER & A DISTANCE OF 2654.97 TO SW CORNER SEC 16.
- 1987 SCHNEIDER COORDINATES OF 230,145.61;2,183,671.19
- 1987 D.O.T. FOUND 1" PIPE AND PLACED COORDINATES. 230,145.61;2,183,671.19

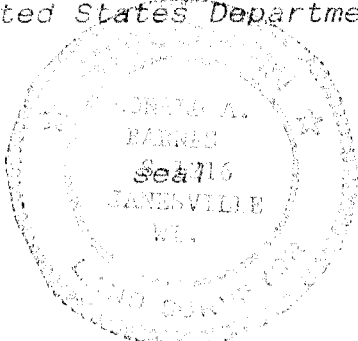
FOUND R/R SPIKE .1 DEEP 2.8 SOUTH OF CENTER PVMT. R/R WAS INSIDE PIPE. SOIL INDICATES THAT THE AREA WAS CUT. DUG 4' DEEP.

(C) Was the corner restored through acceptance of (1) an obliterated evidence location, or, (2) a found perpetuated location?

Accepted found perpetuated location.

(E) Was the corner reestablished through lost corner proportionate methods? If so, show the method, including the directions and distances to other public land survey corners used as evidence or used for proportioning the corner location.

I, Donald Barnes, hereby certify that the corner points as identified by the corner code index were, in a field survey on, Donald Barnes, established, re-established, monumented, re-monumented, recovered or restored as expressed below and in conformance with the regulations and rules as required in the current manual of survey instructions of the United States Department of Interior, Bureau of Land Management.



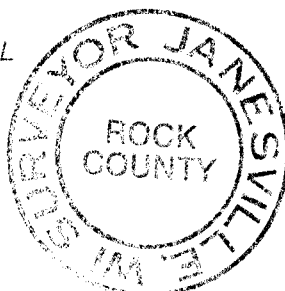
AFFIX YOUR LAND SURVEYOR SEAL

COUNTY SURVEYOR FILING DATA

Date of computer entry _____

Date microfilmed _____

Number of included sheets 1
CORNER CODE



N 11 (1)