

U.S. PUBLIC LAND SURVEY MONUMENT RECORD

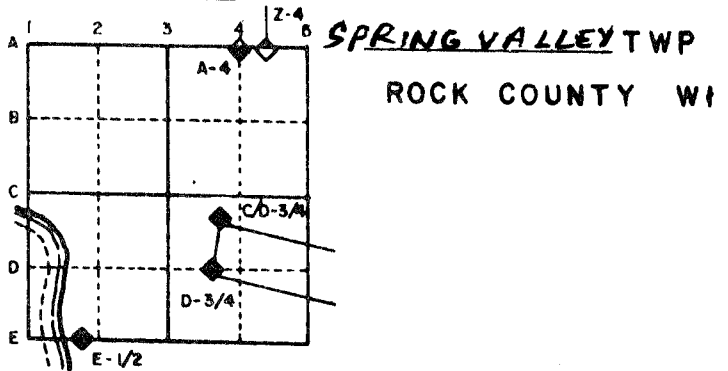
For Public Land Survey Corners in the
T. 2 N., R. 10 E.

CORNER CODE INDEX

	1	2	3	4	5	6	7	8	9	10	11	12	13	14	15	16	17	18	19	20	21	22	23	24	25
A																									
B																									
C	6																								
D		5																							
E			4																						
F				3																					
G					2																				
H																									
I																									
J																									
K																									
L																									
M																									
N																									
O																									
P																									
Q																									
R																									
S																									
T																									
U																									
V																									
W																									
X																									
Y																									
Z																									

PLACE MONUMENT SYMBOL (◆) AT PROPER LOCATION ON ABOVE INDEX

EXAMPLE

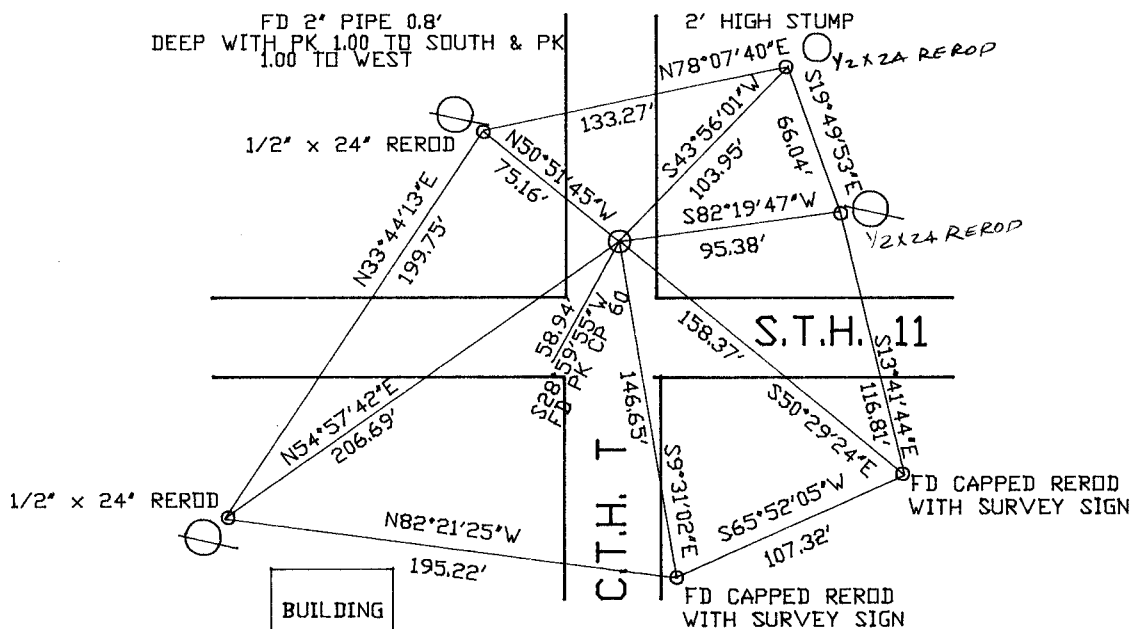


IF AVAILABLE
STATE PLANE COORDINATES

North (Y) _____ Eleve. (Z) _____
 East (X) _____ Zone _____
 Hor. Datum _____ Vert. Datum _____

(a) CORNER MONUMENT WITNESS MONUMENT

BEARINGS ARE BASED ON: ASSUMED DATUM



FIELD BOOK 2 PAGE # 64

SHOW A PLAN VIEW DRAWING DEPICTING THE CORNER MONUMENT AND SURROUNDING PHYSICAL FEATURES, INCLUDING THE EXCAVATION AREA AND DEPTH. THE CORNER MONUMENT SHALL HAVE THE FOLLOWING CHARACTERISTICS: 1) HAVE AT LEAST TWO PREDETERMINED BREAK-OFF POINTS. 2) IF BROKEN, LEAVE A PERMANENTLY MAGNETIZED REMNANT AT THE ORIGINAL POINT. 3) MUST BE EXTENDABLE. 4) THE CAP IS INSCRIBED: ROCK COUNTY SURVEY MONUMENT - PENALTY FOR DISTURBING MARKER. 5) OR AN EXISTING CUT LIMESTONE. AN IRON PIPE 1 1/2" x 4'0" (MINIMUM) MAY BE USED IN AREAS WHERE GROUND WATER IS WITHIN ONE FOOT OF THE SURFACE. IF THE CORNER IS OCCUPIED BY AN IMPROVEMENT (MANHOLE, BURIED CABLE, ETC.) ANY DURABLE, DISTINCT MONUMENT MAY BE USED. CORNERS SHALL BE REFERENCED WITH AT LEAST 4 DURABLE WITNESS MONUMENTS. WITNESS MONUMENTS SHALL BE MADE OF CONCRETE, NATURAL STONE, IRON OR OTHER EQUALLY DURABLE MATERIAL, EXCEPT WOOD. DESCRIBE THE CORNER AND THE WITNESS MONUMENTS.

CORNER CODE:

N 1(1)

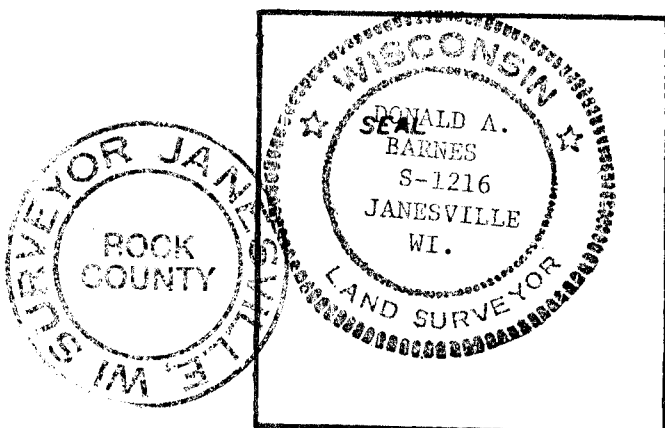
(b.) Describe any record evidence, monument evidence, occupational evidence, testimonial evidence or any other material evidence you considered, and whether the monument was found or placed.

(c.) Was the corner restored through acceptance of (1) an obliterated evidence location, or, (2) a found perpetuated location?

(d.) Describe any material discrepancy between the location of the corner as restored or reestablished and the location of that corner as previously restored or reestablished by distance and direction. Show the discrepancy on the plan view drawing under (a), above. Show the distances between the corner as previously restored or reestablished and (1) the corner as restored or reestablished, and (2) to at least 4 of the witness monuments shown on the drawing in (a), above.

(e.) Was the corner reestablished through lost corner proportionate methods? If so, show the method, including the directions and distances to other public land survey corners used as evidence or used for proportioning in determining the corner location.

I, Donald Barnes, hereby certify that the corner points as identified by the corner code index were, in a field survey on June 26 1989, established, re-established, monumented, re-monumented, recovered or restored as expressed below and in conformance with the regulations and rules as required in the current manual of survey instructions of the United States Department of Interior, Bureau of Land Management.



COUNTY SURVEYOR FILING DATA

Date of Computer Entry _____

Date Received _____

Date Microfilmed _____

Treasurer's Receipt No. _____

Number of Included Sheets 1

AFFIX YOUR LAND SURVEYOR SEAL. CORNER CODE N 1 (1)

(B) Describe any record evidence, monument evidence, occupational evidence, testimonial evidence or any other material evidence you considered, and whether the monument was found or placed.

1866 LOCKE VOL 1 PG 255 FOUND W.B.T. SET STAKE & SURROUNDED IT BY 3 LIMESTONES. SHOWS A DISTANCE OF 2635.51 TO W 1/4 COR SEC 18. HE PLACED THE W 1/4 COR OF SEC 18 ON LINE BETWEEN THE NW & SW CORNERS OF SECTION 18.

1934 SUNNY VOL 3 PG 264 SET 1 1/4" PIPE BY PROPORTIONATE MEASUREMENT. SURROUNDED IT WITH 4 HHS 12" ELM BEARS N26E 48.8. MONUMENT 32.5 N OF CENTER OF PAVEMENT. SHOWS A DISTANCE OF 2638.2 TO FENCE LINE AT W 1/4 CORNER OF SECTION 18, 2821.4 TO PIPE AT S 1/4 CORNER OF SECTION 18, AND 5249.9 TO CENTER OF ROAD INTERSECTION AT SW CORNER OF SEC 19.

1960 BATTERMAN VOL 4 PG 45 FOUND PIPE. PIPE IS 32.5 NORTH OF CENTER OF PVMT. REFERENCED PIPE.

1970 BATTERMAN VOL 4 PG 478 REFERENCED CORNER & SHOWS A DISTANCE OF 32.5 TO CENTER OF PVMT.

1976 BARNES VOL 5 PG 225 FD 2" PIPE WITH HH TO THE EAST. REFERENCED SAME.

1977 TALARCZYK VOL 6 PG 367 DISTANCE OF 2818.32 TO S 1/4 COR SEC 18 AND 2640.62 TO W 1/4 COR SEC 18.

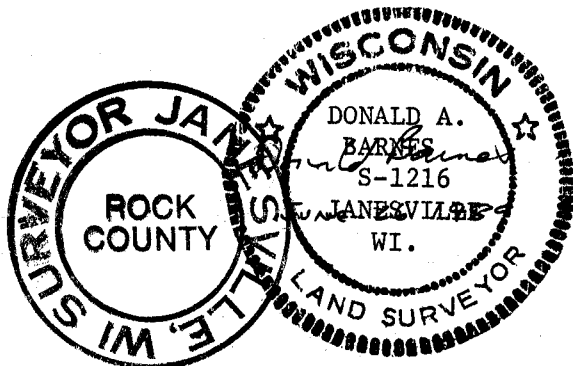
1984 BARNES VOL 6 PG 325 FD 2 PIPE. SHOWS A DISTANCE OF 2818.28 TO N 1/4 COR SEC 19 AND 2625.91 TO W 1/4 COR OF SEC 19. SHOWS COORDINATES OF 230,043.39;2,170,376.30

1987 BARNES VOL 6 PG 367 SHOWS A DISTANCE OF 2637.87 TO W 1/4 COR SEC 18 AND 2818.28 TO S 1/4 COR SEC 18

1987 SCHNEIDER VOL 6 PG 371 SHOWS COORDINATES OF 230,011.03;2,170,377.47

1987 D.O.T. R/W PLAT 1" PIPE WITH COORDINATES OF 230,043.33;2,170,377.04.

(c) Was the corner restored through acceptance of (1) an obliterated evidence location, or, (2) a found perpetuated location?



N / (1)