

Paper weight-110# (minimum)

Black nonfading ink required

U.S. PUBLIC LAND SURVEY MONUMENT RECORD

For Public Land Survey Corners In:
T. 2 N. R. 10 E. 4th P.M.

WI ADMINISTRATIVE CODE A-E 7.08 REQUIREMENT

REV 10/23/2004 USMONREC.DWG

CORNER CODE INDEX

	2	3	4	5	6	7	8	9	10	11	12	13	14	15	16	17	18	19	20	21	22	23	24	25
A																								
B																								
C																								
D																								
E																								
F																								
G																								
H																								
J																								
K																								
L																								
M																								
N																								
O																								
P																								
Q																								
R																								
S																								
T																								
U																								
V																								
W																								
X																								
Y																								
Z																								

SPRING VALLEY TWP

ROCK COUNTY WI

IF AVAILABLE
ROCK COUNTY COORDINATES PREFERRED

North _____ Elev. _____

East _____

Hor. Datum _____ Vert. Datum _____


LATITUDE _____ ELLIPS. HT. _____

LONGITUDE _____

NAD83(91) _____ NETWORK ADJ. YR _____

GPS (X) _____ TRAVERSE (X) _____

BASED ON THE FOLLOWING CONTROL:

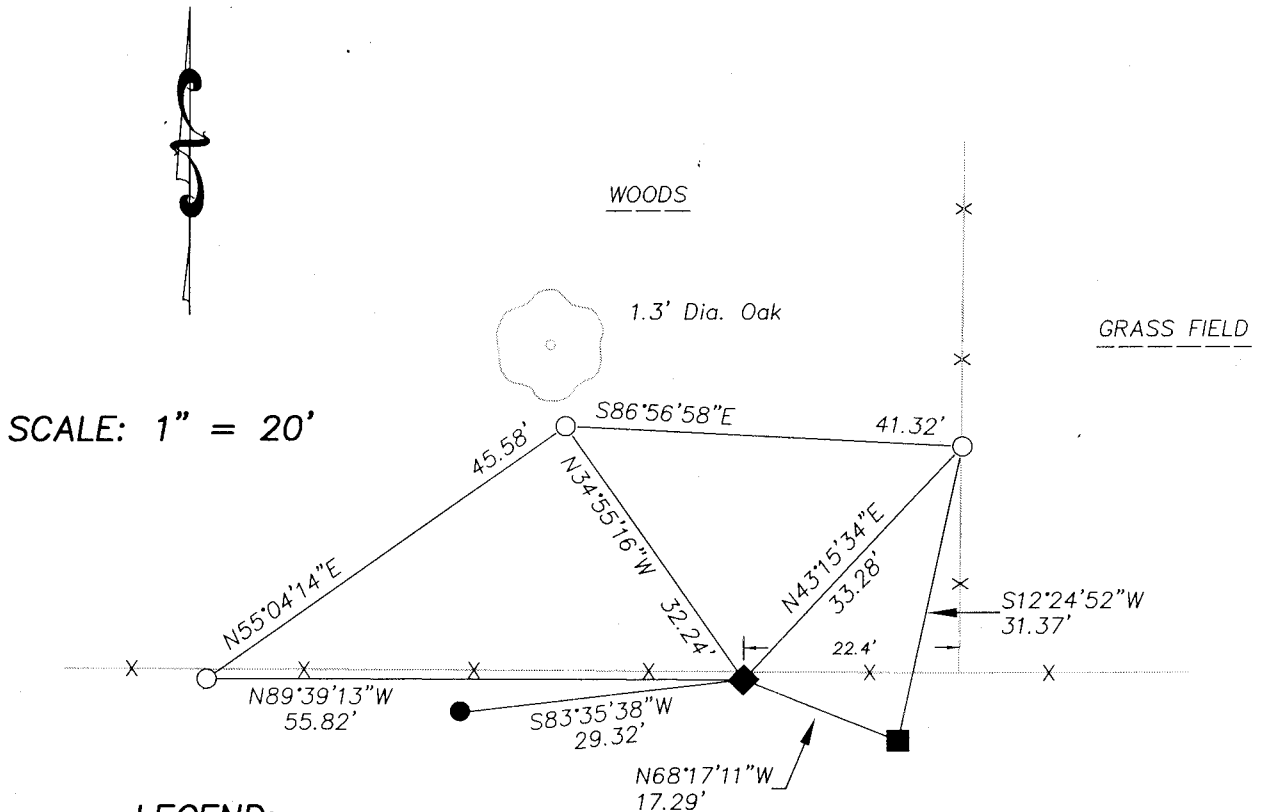
PLACE MONUMENT SYMBOL  AT PROPER LOCATION ON ABOVE INDEX

 CORNER MONUMENT





 WITNESS MONUMENT

(a)

ROCK COUNTY COORDINATE SYSTEM
2007 ADJUSTMENT
BEARINGS ARE BASED ON:



LEGEND:

-  Poly monument with Cast Aluminum cap found.
-  3/8" iron bolt found.
-  3/4" X 24" solid round iron rod set, weighing 1.50 lbs per lineal ft.
-  3/4" X 24" solid round iron rod set, weighing 1.50 lbs per lineal ft.

Todd S. Hue
4-20-2011

FIELD BOOK _____ PAGE # _____

SHEET 1 OF 2

SHOW A PLAN VIEW DRAWING DEPICTING THE CORNER MONUMENT AND SURROUNDING PHYSICAL FEATURES, INCLUDING THE EXCAVATION AREA AND DEPTH.

PLANNING & ZONING COMMITTEE ADOPTED THIS FORM ON 12/2/1982

CORNER CODE R-11 (2)

(B) Describe any record evidence, monument evidence, occupational evidence, testimonial evidence or any other material evidence you considered, and whether the monument was found or placed.

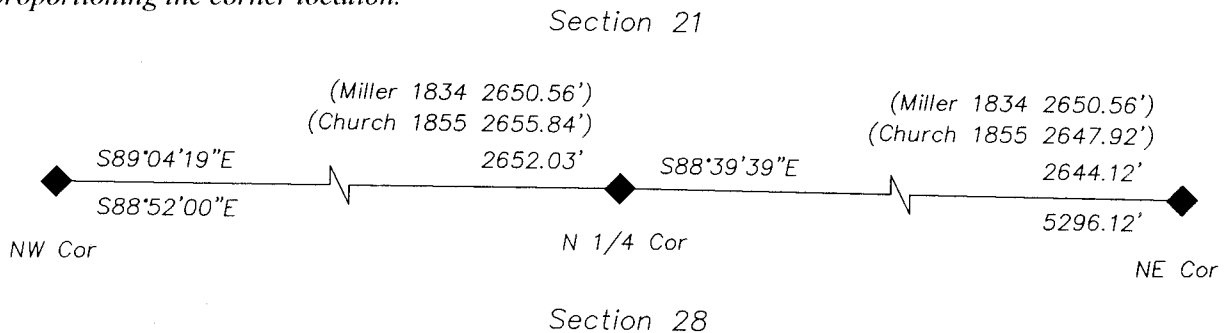
This corner location was previously established by County Surveyor Donald Barnes on November 24th, 1982. County Surveyor Barnes set the previous corner by using the S 1/4 corner, as set by Surveyor Clayton Shimeall and a stone located at the W 1/16th corner of the NE 1/4 for his N/S alignment. He then used County Surveyor Joseph Church's information from an 1855 Plat for proration N/S. I contacted County Surveyor Barnes and he agreed to let me move this location by using proration from the NW corner to the NE corner of Section 28 and I held the location of the existing fence line for my N/S location. This corner does fit very well with other physical evidence found within the section.

C) Was the corner restored through acceptance of (1) an obliterated evidence location, or, (2) a found perpetuated location?

D) Describe any material discrepancy between the location of the corner as restored or reestablished and the location of that corner as previously restored or reestablished by distance and direction. Show the discrepancy on the plan view drawing under (a), above. Show the distances between the corner as previously restored or reestablished and (1) the corner as restored or reestablished, and (2) to at least 4 of the witness monuments shown on the drawing in (a), above.

This corner location was restored from acceptance of existing physical evidence as found within Section 28. The previous Poly monument that was set by County Surveyor Barnes was found and is shown on the Monument Tie Sheet. Please refer to the Plat of Survey I have prepared for more information.

(E) Was the corner reestablished through lost corner proportionate methods? If so, show the method, including the directions and distances to other public land survey corners used as evidence or used for proportioning the corner location.



I, **Todd E. Hasse**, hereby certify that the corner location as identified by the corner code index was determined by me under my direction and control and that this U.S. Public Land Survey Monument Record is correct and complete to the best of my knowledge and belief.

Seal

Emboss

SHEET 2 OF 2

CORNER CODE R-11(2)

A.E. 7.08 REQUIREMENT

Todd E. Hasse

4-20-2011