

Paper weight-110# (minimum)

Black nonfading ink required

# U.S. PUBLIC LAND SURVEY MONUMENT RECORD

For Public Land Survey Corners In:  
T. 2 N. R. 10 E. 4th P.M.  
CORNER CODE INDEX

WI ADMINISTRATIVE CODE A-E 7.08 REQUIREMENT  
REV 10/23/2004 USMONREC.DWG

SPRING VALLEY TWP  
ROCK COUNTY WI

IF AVAILABLE  
ROCK COUNTY COORDINATES PREFERRED

North \_\_\_\_\_ Elev. \_\_\_\_\_

East \_\_\_\_\_

Hor. Datum \_\_\_\_\_ Vert. Datum \_\_\_\_\_

LATITUDE \_\_\_\_\_ ELLIPS. HT. \_\_\_\_\_

LONGITUDE \_\_\_\_\_

NAD83(91) \_\_\_\_\_ NETWORK ADJ. YR \_\_\_\_\_

GPS (X) \_\_\_\_\_ TRAVERSE (X) \_\_\_\_\_

BASED ON THE FOLLOWING CONTROL:

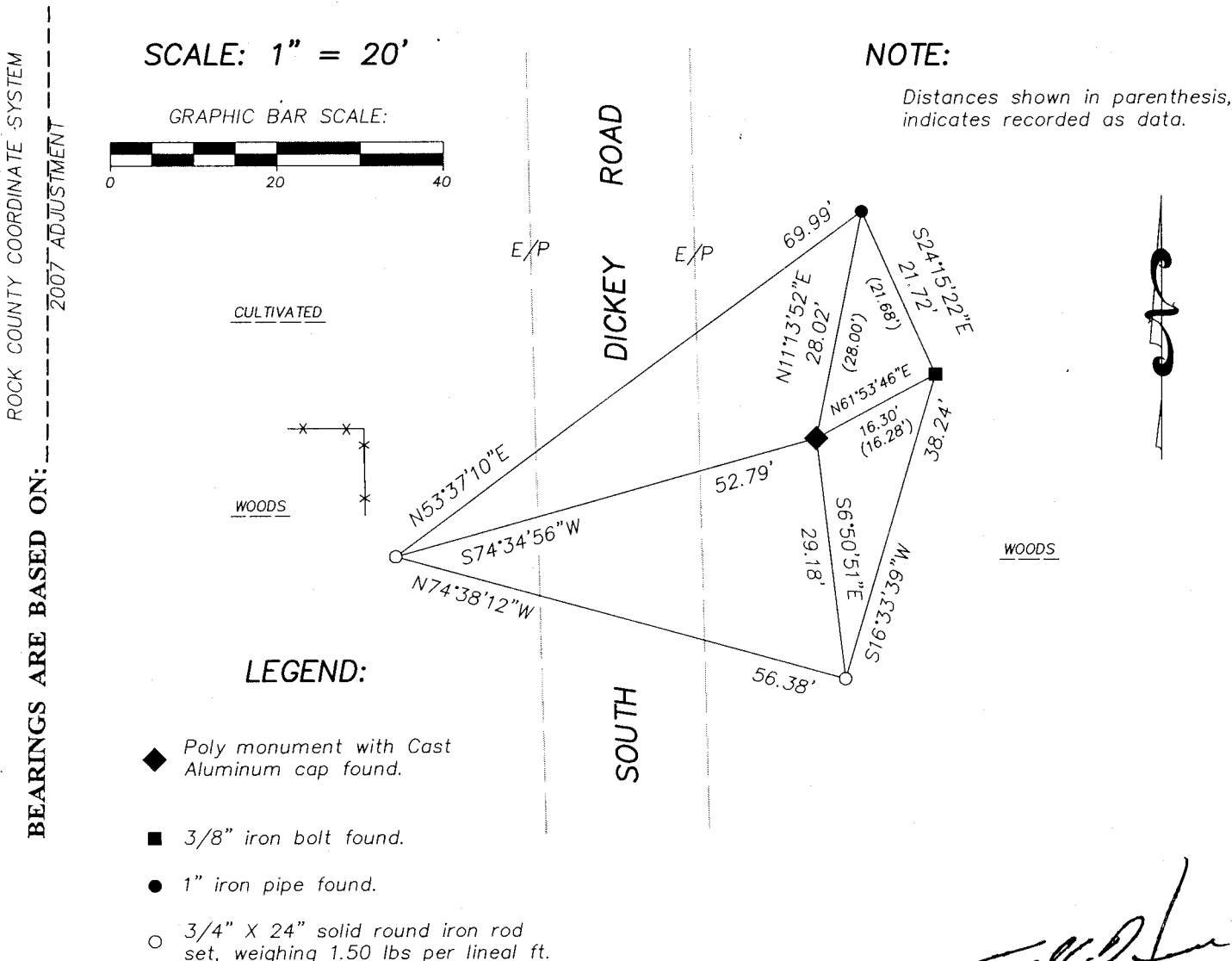
A	1	2	3	4	5	6	7	8	9	10	11	12	13	14	15	16	17	18	19	20	21	22	23	24	25	A
B																										B
C																										C
D																										D
E																										E
F																										F
G																										G
H																										H
J																										J
K																										K
L																										L
M																										M
N																										N
O																										O
P																										P
Q																										Q
R																										R
S																										S
T																										T
U																										U
V																										V
W																										W
X																										X
Y																										Y
Z																										Z

PLACE MONUMENT SYMBOL  $\blacklozenge$  AT PROPER LOCATION ON ABOVE INDEX

$\blacklozenge$  CORNER MONUMENT

$\circ$  WITNESS MONUMENT

(a)



*Todd P. [Signature]*  
4-20-2011

FIELD BOOK \_\_\_\_\_ PAGE # \_\_\_\_\_

SHEET 1 OF 2

SHOW A PLAN VIEW DRAWING DEPICTING THE CORNER MONUMENT AND SURROUNDING PHYSICAL FEATURES, INCLUDING THE EXCAVATION AREA AND DEPTH.

PLANNING & ZONING COMMITTEE ADOPTED THIS FORM ON 12/2/1982

CORNER CODE V-11 (2)

(B) Describe any record evidence, monument evidence, occupational evidence, testimonial evidence or any other material evidence you considered, and whether the monument was found or placed.

This corner location was previously established by County Surveyor Donald Barnes on November 24th, 1982. At that time County Surveyor Barnes found a 1 1/4" X 24" gas pipe on top of a 1" iron pipe, which he stated was in Harmony with CSM Vol. 1, Page 326. County Surveyor Barnes drove the 1" iron pipe down and replaced the 1 1/4" gas pipe with a Poly Monument. I found the Poly Monument in good shape and also found (2) existing witness monuments and set (2) new witness monuments as shown. The monument is .3' above existing grade.

C) Was the corner restored through acceptance of (1) an obliterated evidence location, or, (2) a found perpetuated location?

This corner location was a found perpetuated location based on a found Poly Monument and (2) found witness monuments, as was shown on a Monument Tie Sheet prepared by County Surveyor Donald Barnes, Dated November 24th, 1982. Surveyor Clayton Shimeall had established this location, as shown on Certified Survey Map Volume 1, Page 326 and I think he established this location by holding the location of the SW corner of Section 28 and doubled the distance to the east from the SW corner to the S 1/16th fence corner of the SW 1/4 of Section 28. Please refer to the Plat of Survey I have prepared for more information.

D) Describe any material discrepancy between the location of the corner as restored or reestablished and the location of that corner as previously restored or reestablished by distance and direction. Show the discrepancy on the plan view drawing under (a), above. Show the distances between the corner as previously restored or reestablished and (1) the corner as restored or reestablished, and (2) to at least 4 of the witness monuments shown on the drawing in (a), above.

(E) Was the corner reestablished through lost corner proportionate methods? If so, show the method, including the directions and distances to other public land survey corners used as evidence or used for proportioning the corner location.

I, TODD E. HASSE hereby certify that the corner location as identified by the corner code index was determined by me under my direction and control and that this U.S. Public Land Survey Monument Record is correct and complete to the best of my knowledge and belief.

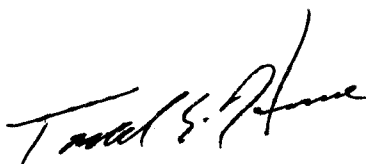
Seal

Emboss

SHEET 2 OF 2

CORNER CODE V-11 (2)

A.E. 7.08 REQUIREMENT



4-20-2011