

U.S. PUBLIC LAND SURVEY MONUMENT RECORD

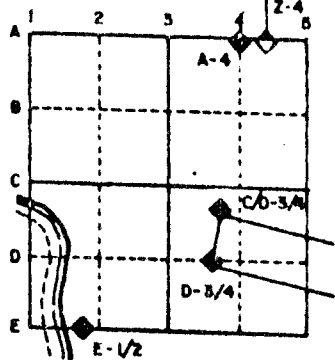
For Public Land Survey Corners in the
T. 2 N., R. 13 E.

CORNER CODE INDEX

	1	2	3	4	5	6	7	8	9	10	11	12	13	14	15	16	17	18	19	20	21	22	23	24	25
A																									
B																									
C	6																								
D		5																							
E			4																						
F				3																					
G					2																				
H						1																			
I																									
J																									
K																									
L																									
M																									
N																									
O																									
P																									
Q																									
R																									
S																									
T																									
U																									
V																									
W																									
X																									
Y																									
Z																									

PLACE MONUMENT SYMBOL (◆) AT PROPER LOCATION ON ABOVE INDEX

EXAMPLE



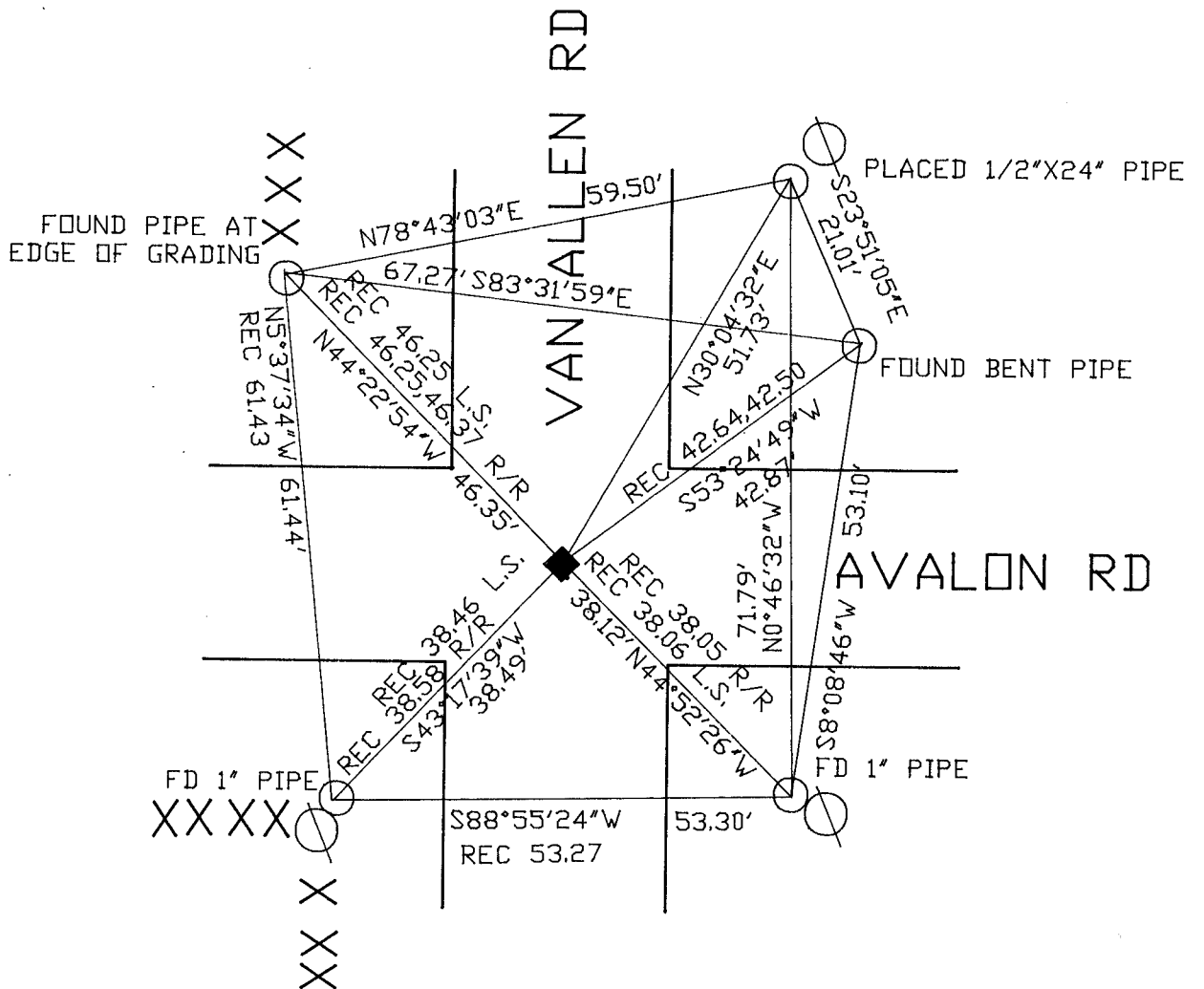
LA PRAIRIE TWP
ROCK COUNTY WI

IF AVAILABLE
STATE PLANE COORDINATES

North (Y) 232,932.46 Eleve. (Z) 906.1
 East (X) 2,286,955.26 Zone _____
 Hor. Datum _____ Vert. Datum _____

◆ CORNER MONUMENT ○ WITNESS MONUMENT

BEARINGS ARE BASED ON STATE PLANE



MICROFILMED

(B) Describe any record evidence, monument evidence, occupational evidence, testimonial evidence or any other material evidence you considered, and whether the monument was found or placed.

1860 RUGER VOL 1 PG 141 SET LIMESTONE 26X12X10 SURROUNDED BY 5 LIMESTONES.

1867 LOCKE VOL 1 PG 295 FOUND MONUMENT AS SET BY RUGER

1872 RUGER REMONUMENTATION FIELD NOTES. FOUND LIMESTONE AT CORNER.

1965 BATTERMAN JR. VOL 4 PG 215 FOUND CUT LIMESTONE MONUMENT,

1965 BATTERMAN JR. VOL 4 PG 229 SET R/R

1985 BARNES L17. FOUND R/R SPIKE AND 2.7 FEET DEEP FOUND CUT LIMESTONE. PLACED POLY MONUMENT ON TOP OF CUT STONE.

FOUND POLY MONUMENT.

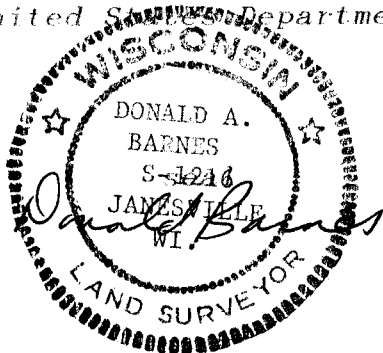
(C) Was the corner restored through acceptance of (1) an obliterated evidence location, or, (2) a found perpetuated location?

ACCEPTED FOUND POLY MONUMENT.

(D) Describe any material discrepancy between the location of the corner as restored or reestablished and the location of that corner as previously restored or reestablished by distance and direction. Show the discrepancy on the plan view drawing under (a), above. Show the distances between the corner as previously restored or reestablished and (1) the corner as restored or reestablished, and (2) to at least 4 of the witness monuments shown on the drawing in (a), above.

(E) Was the corner reestablished through lost corner proportionate methods? If so, show the method, including the directions and distances to other public land survey corners used as evidence or used for proportioning the corner location.

I, Donald Barnes, hereby certify that the corner points as identified by the corner code index were, in a field survey on, SEP 28 1989, established, re-established, monumented, re-monumented, recovered or restored as expressed below and in conformance with the regulations and rules as required in the current manual of survey instructions of the United States Department of Interior, Bureau of Land Management.



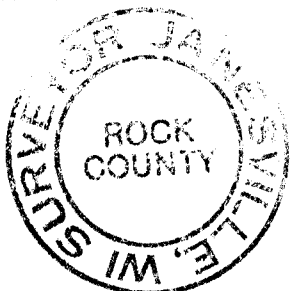
COUNTY SURVEYOR FILING DATA

Date of computer entry _____

Date microfilmed _____

Number of included sheets 417(1)
CORNER CODE

AFFIX YOUR LAND SURVEYOR SEAL



417(1)